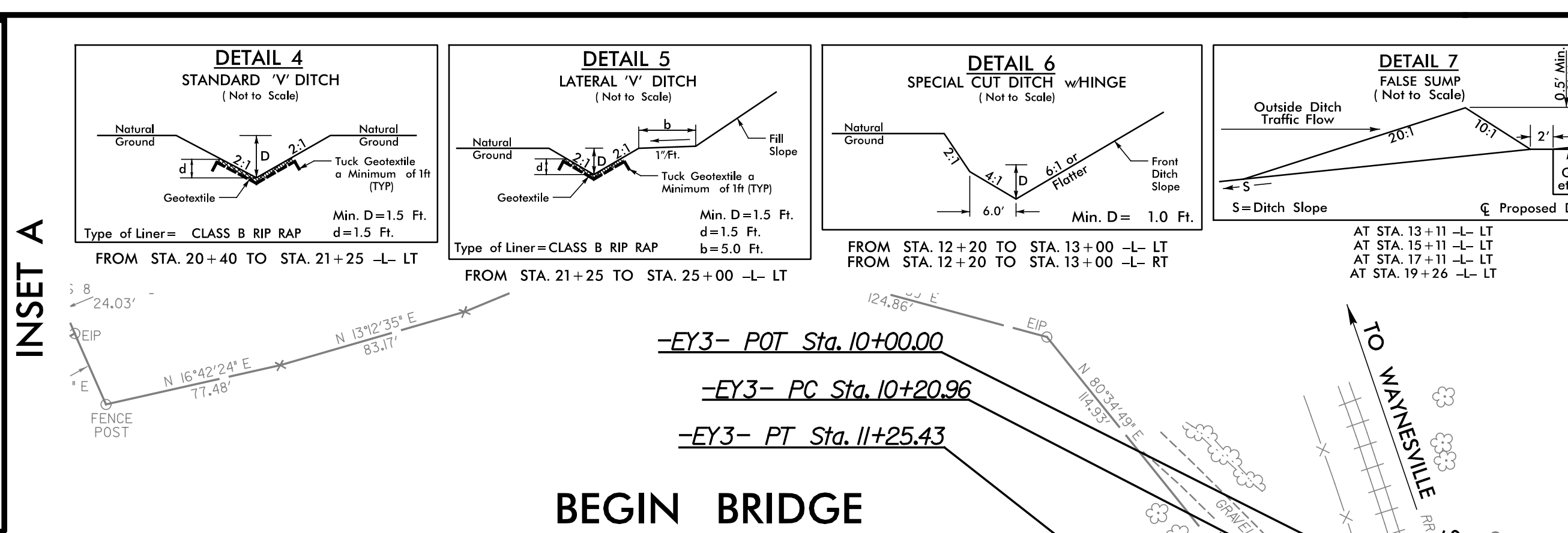
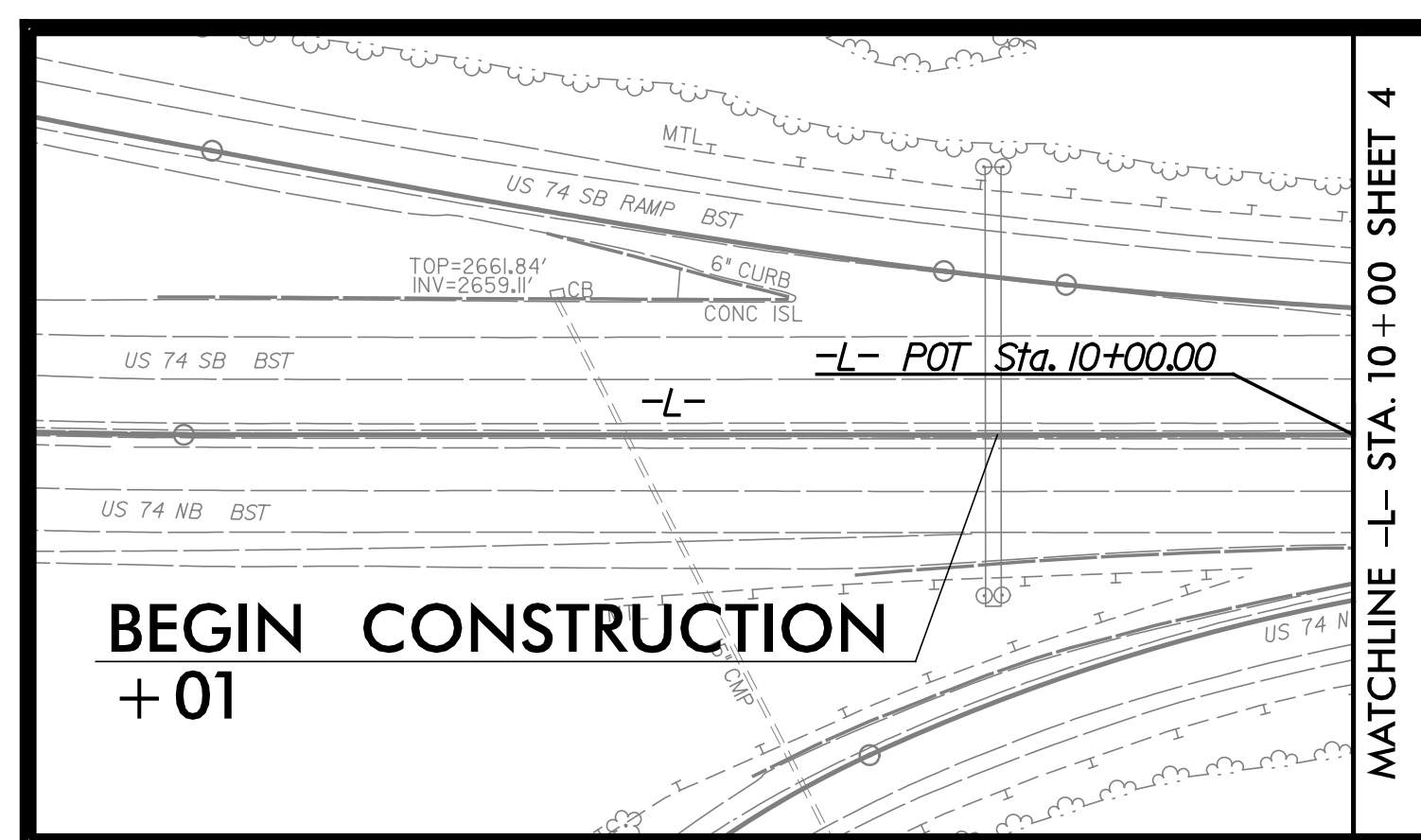
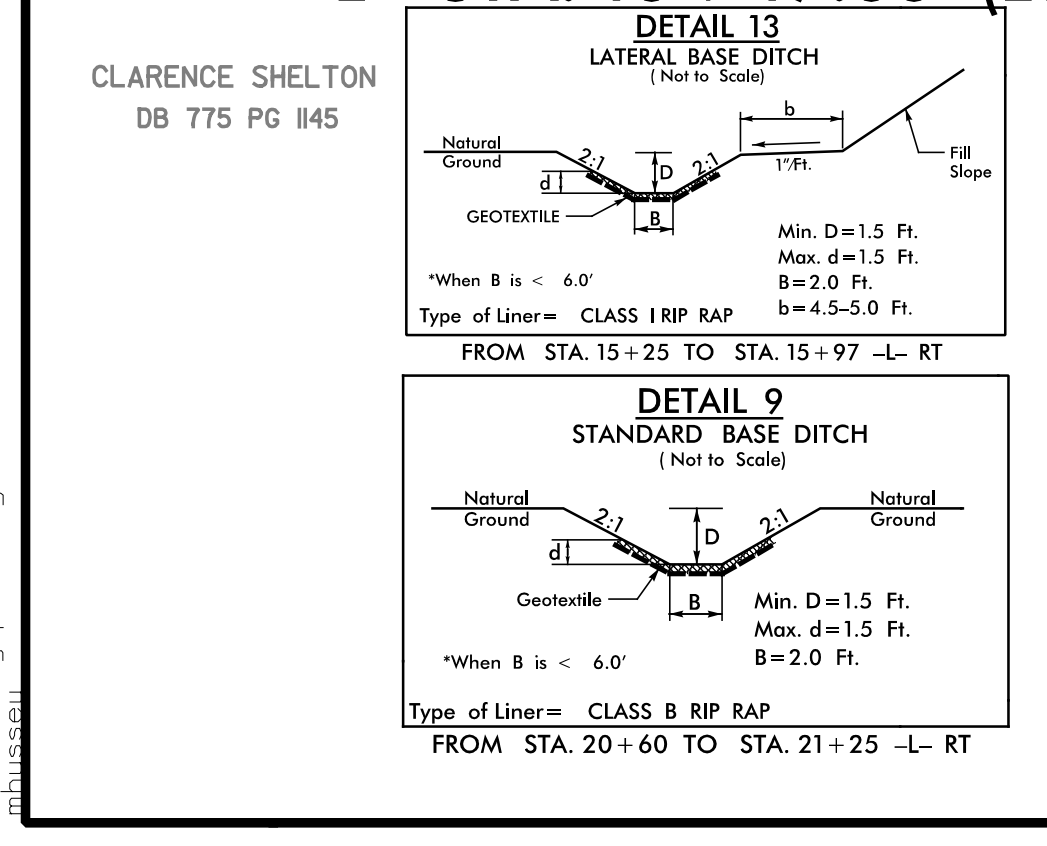
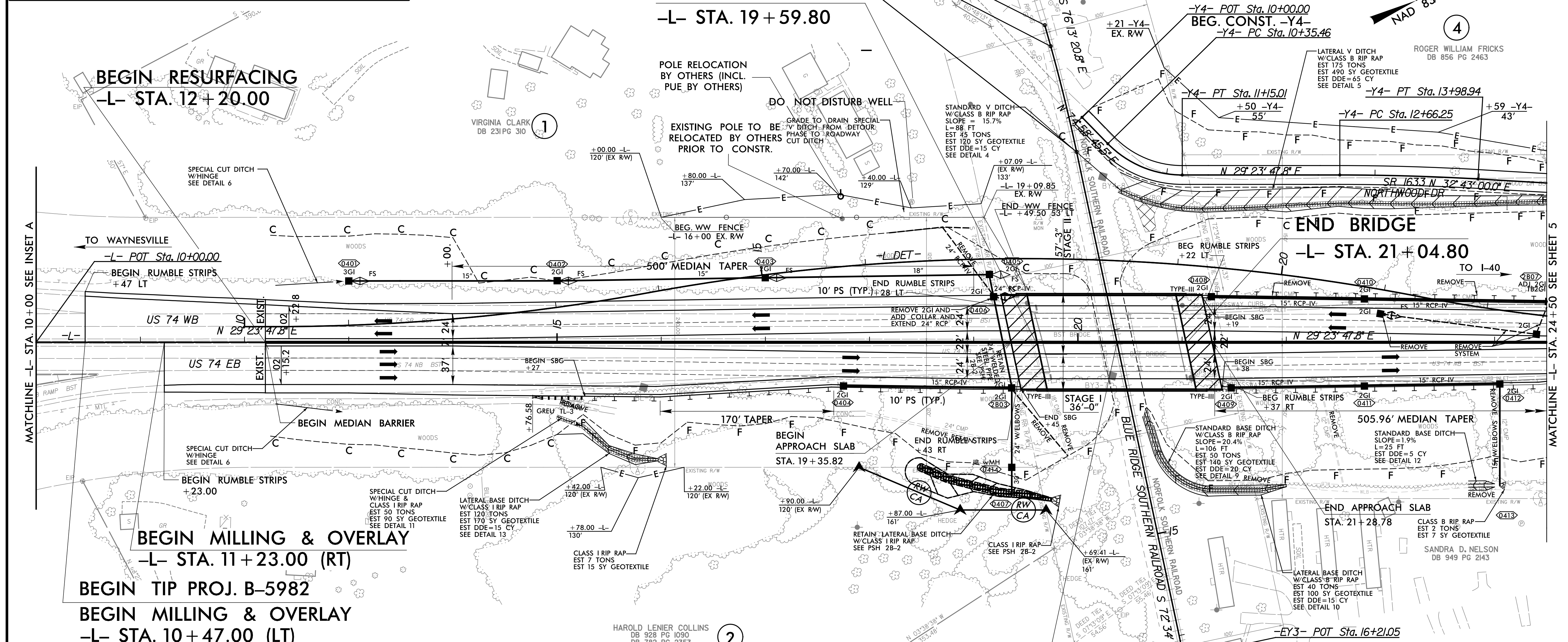


PROJECT REFERENCE NO. B-5982	SHEET NO. 4
RW SHEET NO.	
ROADWAY DESIGN ENGINEER	HYDRAULICS ENGINEER
DOCUMENT NOT CONSIDERED FINAL UNLESS ALL SIGNATURES COMPLETED	



-Y4- CURVE DATA

PI Sta 10+77.47	PI Sta 13+32.61
$\Delta = 45^\circ 34' 57.7''$ (LT)	$\Delta = 3^\circ 19' 12.2''$ (RT)
D = 57' 17" 44.8"	D = 2' 30" 07.2"
L = 79.56'	L = 132.70'
T = 42.02'	T = 66.37'
R = 100.00'	R = 2,290.00'
SE = NC	SE = NC
V = 25MPH	V = 25MPH



DATUM DESCRIPTION

THE LOCALIZED COORDINATE SYSTEM DEVELOPED FOR THIS PROJECT IS BASED ON THE STATE PLANE COORDINATES ESTABLISHED BY NCDOT FOR MONUMENT "GPS 111" WITH NAD 83/NA 2011 STATE PLANE GRID COORDINATES OF NORTHING: 650902.117(FT) EASTING: 806319.849(FT) ELEVATION: (FF)

THE AVERAGE COMBINED GRID FACTOR USED ON THIS PROJECT (GROUND TO GRID) IS: 0.9997513314

THE N.C. LAMBERT GRID BEARING AND LOCALIZED HORIZONTAL GROUND DISTANCE FROM "GPS 111" TO -L- STATION IS N52°58'27.57"E, DISTANCE = 33,386.1334

ALL LINEAR DIMENSIONS ARE LOCALIZED HORIZONTAL DISTANCES

VERTICAL DATUM USED IS NAVD 88

PAVEMENT REMOVAL

FOR -L- PROFILE SEE SHEET 6 & 7

FOR -Y4- PROFILE SEE SHEET 10

SEE S-1 thru S-51 FOR STRUCTURE PLANS

8/6/2024
psh-4.dgn