



NC DEPARTMENT OF TRANSPORTATION  
 DIVISION OF HIGHWAYS  
 STRUCTURE MANAGEMENT UNIT

ATTENTION: **PAR, DATA CHANGES**

# Structure Safety Report

## Routine Element Inspection - Contract

STRUCTURE NUMBER: 750171      SAP STRUCTURE NO: 0760171      FHWA STRUCTURE NO: 000000001510171

DIVISION: 8      COUNTY: RANDOLPH      INSPECTION DATE: 07/12/2023      FREQUENCY: 24 MONTHS

FACILITY CARRIED: SR1713      MILE POST: \_\_\_\_\_

LOCATION: 0.2 MI. S. JCT. SR1446

FEATURE INTERSECTED: US64,NC49

LATITUDE: 35° 41' 8.93"      LONGITUDE: 79° 50' 8.91"

SUPERSTRUCTURE: REINFORCED CONCRETE DECK ON I-BEAMS

SUBSTRUCTURE: ABUT1:RC SPILL THRU, E.BT2:RC CAP & TIMBER PILES, INT.BTS:RCP&B

SPANS: 3 SPANS. SEE SPAN PROFILE SHEET FOR SPAN DETAILS

FRACTURE CRITICAL     TEMPORARY SHORING     SCOUR CRITICAL     SCOUR PLAN OF ACTION

GRADES: (Inspector/NBI Coding)    DECK 6/6    SUPERSTRUCTURE 5/5    SUBSTRUCTURE 5/5    CULVERT N/N

POSTED SV: Not Posted      POSTED TTST: Not Posted

OTHER SIGNS PRESENT: FOUR (4) DELINEATORS, SIX (6) LOW CLEARANCE SIGNS



LOOKING NORTH

Sign noticed issued for	Number Required
<u>NO</u> <b>WEIGHT LIMIT</b>	<u>0</u>
<u>NO</u> <b>DELINEATORS</b>	<u>0</u>
<u>NO</u> <b>NARROW BRIDGE</b>	<u>0</u>
<u>NO</u> <b>ONE LANE BRIDGE</b>	<u>0</u>
<u>NO</u> <b>LOW CLEARANCE</b>	<u>0</u>

**DIRECTION OF INSPECTION**      S-N

**DIRECTION MATCHES PLANS**      NO

INSPECTED BY Brian K Eggerton	SIGNATURE 	ASSISTED BY    B. Tallman
----------------------------------	---------------	---------------------------

NATIONAL BRIDGE INVENTROY ----- STRUCTURE INVENTORY AND APPRAISAL

09/21/2023

**IDENTIFICATION**

(1) STATE NAME NORTH CAROLINA BRIDGE 750171  
 (8) STRUCTURE NUMBER (FEDERAL) 1510171  
 (5) INVENTORY ROUTE (ON/UNDER) ON 31017130  
 (2) STATE HIGHWAY DEPARTMENT DISTRICT 8  
 (3) COUNTY CODE (FEDERAL) 151 (4) PLACE CODE 2080  
 (6) FEATURE INTERSECTED US64,NC49  
 (7) FACILITY CARRIED SR1713  
 (9) LOCATION 0.2 MI. S. JCT. SR1446  
 (11) MILEPOINT 0.0  
 (12) BASE HIGHWAY NETWORK 0  
 (13) LRS INVENTORY ROUTE & SUBROUTE 0  
 (16) LATITUDE 35° 41' 8.93" (17) LONGITUDE 79° 50' 8.91"  
 (98) BORDER BRIDGE STATE CODE PERCENT SHARED  
 (99) BORDER BRIDGE STRUCTURE NUMBER

SUFFICIENCY RATING 62.86  
 STATUS = Functionally Obsolete

**CLASSIFICATION** **CODE**

(112) NBIS BRIDGE SYSTEM Y  
 (104) HIGHWAY SYSTEM Inventory Route not on NHS 0  
 (26) FUNCTIONAL CLASS Urban Collector 17  
 (100) STRAHNET HIGHWAY Not a STRAHNET Route 0  
 (101) PARALLEL STRUCTURE No parallel structure exists N  
 (102) DIRECTION OF TRAFFIC 2-way traffic 2  
 (103) TEMPORARY STRUCTURE  
 (110) DESIGNATED NATIONAL NETWORK - on national network for trucks 0  
 (20) TOLL On Free Road 3  
 (21) MAINT - 01  
 (22) OWNER - 01  
 (37) HISTORICAL SIGNIFICANCE - 5

**STRUCTURE TYPE AND MATERIAL**

(43) STRUCTURE TYPE MAIN Steel  
 TYPE Stringer/Multi-beam or girder CODE 302  
 (44) STRUCTURE TYPE APPROACH  
 TYPE CODE  
 (45) NUMBER OF SPANS IN MAIN UNIT 3  
 (46) NUMBER OF SPANS IN APPROACH 0  
 (107) DECK STRUCTURE TYPE CODE 1  
 (108) WEARING SURFACE/PROTECTIVE SYSTEM  
 (A) TYPE OF WEARING SURFACE CODE 6  
 (B) TYPE OF MEMBRANE CODE 0  
 (C) TYPE OF DECK PROTECTION CODE 0

**CONDITION** **CODE**

(58) DECK 6  
 (59) SUPERSTRUCTURE 5  
 (60) SUBSTRUCTURE 5  
 (61) CHANNEL & CHANNEL PROTECTION N  
 (62) CULVERTS N

**LOAD RATING AND POSTING** **CODE**

(31) DESIGN LOAD HS 15 3  
 (63) OPERATING RATING METHOD - Load Factor 1  
 (64) OPERATING RATING - HS-27 49  
 (65) INVENTORY RATING METHOD - 1  
 (66) INVENTORY RATING HS-16 29  
 (70) BRIDGE POSTING No Posting Required 5  
 (41) STRUCTURE OPEN, POSTED, OR CLOSED DESCRIPTION Open, no restriction A

**AGE AND SERVICE**

(27) YEAR BUILT 1952  
 (106) YEAR RECONSTRUCTED 0  
 (42) TYPE OF SERVICE ON - Overpass Structure  
 OFF - Highway CODE 61  
 (28) LANES ON STRUCTURE 2 LANES UNDER STRUCTURE 4  
 (29) AVERAGE DAILY TRAFFIC 13000  
 (30) YEAR OF ADT 2016 (109) TRUCK ADT PCT 7  
 (19) BYPASS OR DETOUR LENGTH 0.0

**APPRAISAL** **CODE**

(67) STRUCTURAL EVALUATION 5  
 (68) DECK GEOMETRY N  
 (69) UNDERCLEARANCES, VERT & HORIZ 3  
 (71) WATERWAY ADEQUACY N  
 (72) APPROACH ROADWAY ALIGNMENT 8  
 (36) TRAFFIC SAFETY FEATURES 1000  
 (113) SCOUR CRITICAL BRIDGES N

**GEOMETRIC DATA**

(48) LENGTH OF MAXIMUM SPAN 66.0  
 (49) STRUCTURE LENGTH 191.3  
 (50) CURB OR SIDEWALK: LEFT 2.3 RIGHT 2.3  
 (51) BRIDGE ROADWAY WIDTH, CURB TO CURB 26.3  
 (52) DECK WIDTH OUT TO OUT 32.3  
 (32) APPROACH ROADWAY WITH (W/ SHOULDERS) 25.0  
 (33) BRIDGE MEDIAN No median CODE 0  
 (34) SKEW 41 (35) STRUCTURE FLARED 0  
 (10) INVENTORY ROUTE MIN VERT CLEAR 999.9  
 (47) INVENTORY ROUTE TOTAL HORIZ CLEAR 26.3  
 (53) MIN VERT CLEAR OVER BRIDGE RDWY 999.9  
 (54) MIN VERT UNDERCLEAR: REFERENCE H 14.1  
 (55) MIN LAT UNDERCLEARANCE RT: REFERENCE H 3.5  
 (56) MIN LAT UNDERCLEARANCE LT: 0.0

**PROPOSED IMPROVEMENTS**

(75) TYPE OF WORK CODE  
 (76) LENGTH OF STRUCTURE IMPROVEMENT  
 (94) BRIDGE IMPROVEMENT COST  
 (95) ROADWAY IMPROVEMENT COST  
 (96) TOTAL PROJECT COST  
 (97) YEAR OF IMPROVEMENT COST ESTIMATE  
 (114) FUTURE ADT 26,000 YEAR OF FUTURE ADT 2040

**NAVIGATION DATA**

(38) NAVIGATION CONTROL - CODE N  
 (111) PIER PROTECTION CODE  
 (39) NAVIGATION VERTICAL CLEARANCE 0.0  
 (116) VERT - LIFT BRIDGE NAV MIN VERT CLEAR 0.0  
 (40) NAVIGATION HORIZONTAL CLEARANCE 0.0

**INSPECTION**

(90) INSPECTION DATE 07/23 (91) FREQUENCY 24  
 (92) CRITICAL FEATURE INSPECTION (93) CFI DATE  
 A) FRACTURE CRIT DETAIL A)  
 B) UNDERWATER INSP B)  
 C) OTHER SPECIAL INSP C)  
 SCOUR

Span Number	Facility Carried	Inventory Route	Maximum Minimum Vertical Clearance	Milepoint	Base Highway	LRS Inventory Route	Functional Classification	Number of Lanes	Average Daily Traffic	Year of Average Daily Traffic	Total Horizontal Clearance	See Note Below					STRAHNET Highway	Direction of Traffic	National Highway System	National Truck Network
												Reference Feature	Minimum Vertical Underclearance	Righth Lateral Underclearance	Left Lateral Underclearance	Underclearance Appraisal Grade				
	7	5	10	11	12	13	26	28	29	30	47	54A	54	55	56	69	100	102	104	110
2	US64E,NC49S	21000640	14.3	74.3	1	20064	14	2	13000	2019	41.3	H	14.1	9.2	3.5	4		2	<input type="checkbox"/>	<input type="checkbox"/>

Note: Items 54, 55, and 56 are not reported FHWA under route data points but are collected for each under route to determine the minimum value for Underclearance Appraisal Item 69.

## Superstructure Build Details

Span Number 1

Span Length 68.833

Skew 49.000

Number of Items	Type of Component	Element Name	Quantity	Protective System Applied	Quantity (Sq Ft)
1	Reinforced Concrete Deck	Reinforced Concrete Deck	2220 Square Feet		
2	Concrete Railing	Reinforced Concrete Bridge Railing	138 Feet		
1	Asphalt Wearing Surface	Wearing Surface	1807 Square Feet		
2	Delineator	Warning Signs	2 Each		
8	Other Bearing	Other Bearings	8 Each	Legacy Red Lead Primer Systems with Various Topcoats	8
4	Plate Girder	Steel Open Girder/Beam	268 Feet	Legacy Red Lead Primer Systems with Various Topcoats	2412

Span Number 2

Span Length 67.000

Skew 49.000

Number of Items	Type of Component	Element Name	Quantity	Protective System Applied	Quantity (Sq Ft)
4	Plate Girder	Steel Open Girder/Beam	268 Feet	Legacy Red Lead Primer Systems with Various Topcoats	2412
1	Standard Joint	Pourable Joint Seal	43 Feet		
2	Concrete Railing	Reinforced Concrete Bridge Railing	134 Feet		
1	Asphalt Wearing Surface	Wearing Surface	1759 Square Feet		
8	Other Bearing	Other Bearings	8 Each	Legacy Red Lead Primer Systems with Various Topcoats	8
1	Reinforced Concrete Deck	Reinforced Concrete Deck	2161 Square Feet		
6	Other warning sign	Other Warning Signs	6 Each		

Span Number 3

Span Length 55.500

Skew 49.000

Number of Items	Type of Component	Element Name	Quantity	Protective System Applied	Quantity (Sq Ft)
1	Reinforced Concrete Deck	Reinforced Concrete Deck	1790 Square Feet		
1	Standard Joint	Pourable Joint Seal	43 Feet		
8	Other Bearing	Other Bearings	8 Each	Legacy Red Lead Primer Systems with Various Topcoats	8
2	Delineator	Warning Signs	2 Each		

## Superstructure Build Details

1	Asphalt Wearing Surface	Wearing Surface	1457 Square Feet		
2	Concrete Railing	Reinforced Concrete Bridge Railing	112 Feet		
4	Plate Girder	Steel Open Girder/Beam	216 Feet	Legacy Red Lead Primer Systems with Various Topcoats	2144

# Structure Element Scoring

Structure Number: 750171

Inspection Date 7/12/2023

Element Number	Parent Number	Element Name	Location	Total Quantity	Level 1 Quantity	Level 2 Quantity	Level 3 Quantity	Level 4 Quantity
12		Reinforced Concrete Deck	Deck	6,171	5,322	800	49	0
107		Steel Open Girder/Beam	Beam	752	181	479	32	60
515	107	Steel Protective Coating	Beam	6,968	5,045	300	1,155	468
205		Reinforced Concrete Column	Piles and Columns	6	1	2	3	0
215		Reinforced Concrete Abutment	Abutments	92	53	36	3	0
220		Reinforced Concrete Pile Cap/Footing	Footing	18	18	0	0	0
234		Reinforced Concrete Pier Cap	Caps	172	102	11	59	0
301		Pourable Joint Seal	Expansion Joints	86	86	0	0	0
316		Other Bearings	Bearing Device	24	2	9	13	0
515	316	Steel Protective Coating	Bearing Device	24	1	0	10	13
331		Reinforced Concrete Bridge Railing	Bridge Rail	384	0	335	49	0
510		Wearing Surface	Wearing Surfaces	5,023	4,650	177	196	0
602		Warning Signs	Ground Mounted Signs	4	4	0	0	0
603		Other Warning Signs	Ground Mounted Signs	6	6	0	0	0

# Summary of Maintenance Needs

## Maintenance By Defect

Structure Number: 750171

Inspection Date: 07/12/2023

<b>MMS Code</b>	<b>Element Name</b>	<b>Defect Name</b>	<b>Recommended Quantity</b>
3326	Reinforced Concrete Deck	Cracking (RC and Other)	800 Square Feet
3326	Reinforced Concrete Deck	Delamination/Spall	71 Square Feet
3314	Steel Open Girder/Beam	Corrosion	83 Feet
3348	Reinforced Concrete Column	Cracking (RC and Other)	15 Each
3348	Reinforced Concrete Column	Delamination/Spall	10 Each
3348	Reinforced Concrete Column	Efflorescence/Rust Staining	10 Each
3350	Reinforced Concrete Abutment	Cracking (RC and Other)	3 Feet
3348	Reinforced Concrete Pier Cap	Efflorescence/Rust Staining	3 Feet
3348	Reinforced Concrete Pier Cap	Cracking (RC and Other)	51 Feet
3348	Reinforced Concrete Pier Cap	Delamination/Spall	29 Feet
3334	Other Bearings	Corrosion	13 Each
3318	Reinforced Concrete Bridge Railing	Delamination/Spall	316 Feet
2816	Wearing Surface	Crack (Wearing Surface)	321 Square Feet
2816	Wearing Surface	Patched Area/Pothole (Wearing Surface)	47 Square Feet
3342	Steel Protective Coating	Effectiveness (Steel Protective Coatings)	1949 Square Feet

## Element Structure Maintenance Quantities

Structure Number: 750171

Inspection Date 07/12/2023

Location	MMS Code	Description	Maint Quantity	Total Quantity	Severe Quantity	Poor Quantity	Fair Quantity	Good Quantity
Beam	3314	Maintenance Steel Superstructure Components	83	752	60.000	32.000	479.000	181.000
Beam	3342	Clean and Paint Steel	1926	6968	468.000	1155.000	300.000	5045.000
Bearing Device	3334	Bridge Bearing	13	24	0.000	13.000	9.000	2.000
Bearing Device	3342	Clean and Paint Steel	23	24	13.000	10.000	0.000	1.000
Bridge Rail	3318	Maintenance of Concrete Bridge Rail	316	384	0.000	49.000	335.000	0.000
Deck	3326	Maintenance of Concrete Deck	871	6171	0.000	49.000	800.000	5322.000
Expansion Joints	3310	Maintenance of Standard Bridge Expansion Joints	0	86	0.000	0.000	0.000	86.000
Ground Mounted Signs	3250	Install or Replace Ground Mounted Signs	0	4	0.000	0.000	0.000	4.000
Ground Mounted Signs	3250	Install or Replace Ground Mounted Signs	0	6	0.000	0.000	0.000	6.000
Wearing Surfaces	2816	Asphalt Surface Repair	368	5023	0.000	196.000	177.000	4650.000
Abutments	3350	Maintenance of Concrete Wings and Wall	3	92	0.000	3.000	36.000	53.000
Caps	3348	Maintenance of Concrete Substructure	83	172	0.000	59.000	11.000	102.000
Footing	3348	Maintenance of Concrete Substructure	0	18	0.000	0.000	0.000	18.000
Piles and Columns	3348	Maintenance of Concrete Substructure	35	6	0.000	3.000	2.000	1.000



# Priority Actions Request

Structure Number 750171

## Span1

3314	Beam 1	Plate Girder		
Priority Level	Defect Type	Quantity	Defect Description	
2	Corrosion	2	Span 1 Beam 1: CORROSION ALONG WEB AND BOTTOM FLANGE UP TO 24 INCH LONG X 8 INCH HIGH WITH UP TO 1/16 INCH DEEP PAINTED OVER PITTING IN WEB AND 24 INCH LONG X 6 INCH WIDE DOWN TO 3/8 INCH RESIDUAL BOTTOM FLANGE ON LEFT SIDE EXTENDING FROM END BENT 1.	
3314	Beam 2	Plate Girder		
Priority Level	Defect Type	Quantity	Defect Description	
2	Corrosion	4	Span 1 Beam 2: CORROSION ALONG WEB AND BOTTOM FLANGE UP TO 46 INCH LONG X 5 INCH HIGH WITH NO MEASURABLE LOSS OF SECTION IN WEB AND 46 INCH LONG X 6 INCH WIDE DOWN TO 3/8 INCH RESIDUAL BOTTOM FLANGE EXTENDING FROM END BENT 1.	
3314	Beam 3	Plate Girder		
Priority Level	Defect Type	Quantity	Defect Description	
2	Corrosion	5	Span 1 Beam 3: CORROSION ALONG WEB AND BOTTOM FLANGE UP TO 50 INCH LONG X 13 INCH HIGH WITH UP TO 1/16 INCH DEEP PAINTED OVER PITTING IN WEB AND 50 INCH LONG X 6 INCH WIDE DOWN TO 1/2 INCH RESIDUAL BOTTOM FLANGE EXTENDING FROM END BENT 1.	
3314	Beam 4	Plate Girder		
Priority Level	Defect Type	Quantity	Defect Description	
2	Corrosion	5	Span 1 Beam 4: CORROSION ALONG WEB AND BOTTOM FLANGE UP TO 58 INCH LONG X 12 INCH HIGH DOWN TO 3/8 INCH RESIDUAL WEB AND 58 INCH LONG X 6 INCH WIDE DOWN TO 5/16 INCH RESIDUAL BOTTOM FLANGE EXTENDING FROM END BENT 1.	

## Span2

2816	Wearing Surface	Asphalt Wearing Surface		
Priority Level	Defect Type	Quantity	Defect Description	
2	Patched Area/Pothole	8	Span 2 Wearing Surface: UP TO 1/2 INCH WIDE TRANSVERSE CRACKS ALONG BENT 1 WITH (4) SPALLS UP TO 60 INCH X 6 INCH X FULL DEPTH	
3314	Beam 1	Plate Girder		
Priority Level	Defect Type	Quantity	Defect Description	
2	Corrosion	3	Span 2 Beam 1: CORROSION ALONG WEB AND BOTTOM FLANGE UP TO 30 INCH LONG X 14 INCH HIGH DOWN TO 3/8 INCH RESIDUAL WEB AND 30 INCH LONG X 12 INCH WIDE DOWN TO 1/2 INCH RESIDUAL BOTTOM FLANGE EXTENDING FROM BENT 2.	

? Priority Action Request (PAR)
 1 Assigned Routine Maintenance
 2 Assigned Priority Maintenance
 3 Assigned Critical Find

# Priority Actions Request

Structure Number 750171

**2** Corrosion 6 Span 2 Beam 1: CORROSION ALONG WEB AND BOTTOM FLANGE UP TO 69 INCH LONG X 12 INCH HIGH DOWN TO 1/4 INCH RESIDUAL WEB AND 69 INCH LONG X 12 INCH WIDE DOWN TO 3/8 INCH RESIDUAL BOTTOM FLANGE EXTENDING FROM BENT 1.

**3314** **Beam 3** Plate Girder

Priority Level	Defect Type	Quantity	Defect Description
<b>2</b>	Corrosion	4	Span 2 Beam 3: CORROSION ALONG WEB AND BOTTOM FLANGE UP TO 47 INCH LONG X 7 INCH HIGH DOWN TO 3/8 INCH RESIDUAL WEB AND 32 INCH LONG X 12 INCH WIDE DOWN TO 1/2 INCH RESIDUAL BOTTOM FLANGE EXTENDING FROM BENT 1.

**3314** **Beam 4** Plate Girder

Priority Level	Defect Type	Quantity	Defect Description
<b>2</b>	Corrosion	6	Span 2 Beam 4: CORROSION ALONG BOTTOM FLANGE UP TO 72 INCH LONG X 12 INCH WIDE DOWN TO 1/2 INCH RESIDUAL BOTTOM FLANGE EXTENDING FROM BENT 1.

## Span3

**3314** **Beam 1** Plate Girder

Priority Level	Defect Type	Quantity	Defect Description
<b>2</b>	Corrosion	8	Span 3 Beam 1: CORROSION ALONG WEB AND BOTTOM FLANGE UP TO 96 INCH LONG X 14 INCH HIGH DOWN TO 3/8 INCH RESIDUAL WEB AND 82 INCH LONG X 12 INCH WIDE DOWN TO 5/8 INCH RESIDUAL BOTTOM FLANGE EXTENDING FROM BENT 2.

**3314** **Beam 3** Plate Girder

Priority Level	Defect Type	Quantity	Defect Description
<b>2</b>	Corrosion	5	Span 3 Beam 3: CORROSION ALONG WEB AND BOTTOM FLANGE UP TO 58 INCH LONG X 9 INCH HIGH DOWN TO 7/16 INCH RESIDUAL WEB AND 46 INCH LONG X 12 INCH WIDE DOWN TO 5/8 INCH RESIDUAL BOTTOM FLANGE EXTENDING FROM BENT 2.

**3314** **Beam 4** Plate Girder

Priority Level	Defect Type	Quantity	Defect Description
<b>2</b>	Corrosion	4	Span 3 Beam 4: CORROSION ALONG WEB AND BOTTOM FLANGE UP TO 48 INCH LONG X 12 INCH HIGH DOWN TO 7/16 INCH RESIDUAL WEB AND 34 INCH LONG X 12 INCH WIDE DOWN TO 3/8 INCH RESIDUAL BOTTOM FLANGE EXTENDING FROM BENT 2.

**2816** **Wearing Surface** Asphalt Wearing Surface

# Priority Actions Request

Structure Number 750171

Priority Level	Defect Type	Quantity	Defect Description
2	Patched Area/Pothole	39	Span 3 Wearing Surface: UP TO 1/2 INCH WIDE TRANSVERSE CRACKS ALONG END BENT 2 WITH (4) SPALLS UP TO 38 INCH X 5 INCH X FULL DEPTH.

## Element Condition and Maintenance Data

Structure Number: 750171

Inspection Date: 07/12/2023

**Span 1** **Deck**  
**Reinforced Concrete Deck**

Element Number	Element Name	Total Qty	CS1 Qty	CS2 Qty	CS3 Qty	CS4 Qty	
12	Reinforced Concrete Deck	2,220	1,998	200	22	0	Square Feet

Element Number	Defect Type	Defect Description	CS	CS Qty	Maint Qty	
<input checked="" type="checkbox"/> 12	Delamination/Spall	34 INCH LONG X 7 INCH WIDE X 4 INCH HIGH SPALL WITH EXPOSED REBAR IN BOTTOM AND WEST FACE OF DECK AT END BENT 1	3	4	4	Square Feet
<input checked="" type="checkbox"/> 12	Delamination/Spall	36 INCH X 30 INCH X 1 INCH DEEP SPALL WITH EXPOSED REBAR IN BOTTOM OF DECK IN EAST OVERHANG AT BENT 1	3	8	8	Square Feet
<input checked="" type="checkbox"/> 12	Delamination/Spall	48 INCH X 30 INCH X 3 INCH SPALL WITH EXPOSED REBAR IN BOTTOM OF DECK IN WEST OVERHANG AT BENT 1	3	10	10	Square Feet
<input checked="" type="checkbox"/> 12	Delamination/Spall	TWO (2) SPALLS WITH EXPOSED REBAR UP TO 11 FOOT LONG X 6 INCH HIGH X 6 INCH WIDE IN END DIAPHRAGMS BETWEEN BEAMS 2 AND 3 AND BEAMS 3 AND 4 AT END BENT 1	3		22	Square Feet
<input checked="" type="checkbox"/> 12	Cracking (RC and Other)	UP TO 0.016 INCH TRANSVERSE CRACKS IN BOTTOM OF DECK IN VARIOUS LOCATIONS	2	200	200	Square Feet

**General Comments**

**Span 1** **Beam 1**  
**Plate Girder**

Element Number	Element Name	Total Qty	CS1 Qty	CS2 Qty	CS3 Qty	CS4 Qty	
107	Steel Open Girder/Beam	67	0	57	0	10	Feet
515	Steel Protective Coating	603	388	0	171	44	Square Feet

Element Number	Defect Type	Defect Description	CS	CS Qty	Maint Qty	
<input checked="" type="checkbox"/> 107	Corrosion	PAR: CORROSION ALONG WEB AND BOTTOM FLANGE UP TO 24 INCH LONG X 8 INCH HIGH WITH UP TO 1/16 INCH DEEP PAINTED OVER PITTING IN WEB AND 24 INCH LONG X 6 INCH WIDE DOWN TO 3/8 INCH RESIDUAL BOTTOM FLANGE ON LEFT SIDE EXTENDING FROM END BENT 1	4	2	2	Feet
<input checked="" type="checkbox"/> 107	Corrosion	PAR: PAINTED OVER AND ARRESTED CORROSION ALONG WEB AND BOTTOM FLANGE UP TO 96 INCH LONG X 8 INCH HIGH DOWN TO 7/16 INCH RESIDUAL WEB AND 96 INCH LONG X 12 INCH WIDE DOWN TO 1/2 INCH RESIDUAL BOTTOM FLANGE, BEGINNING APPROXIMATELY 5 FOOT FROM BENT 1	4	8	8	Feet
<input checked="" type="checkbox"/> 107	Corrosion	AREAS OF OF SURFACE CORROSION ALONG WEB AND BOTH FLANGES IN VARIOUS LOCATIONS	2	57		Feet
<input checked="" type="checkbox"/> 515	Effectiveness (Steel Protective Coatings)	COATING FAILURE	4	44	44	Square Feet
<input checked="" type="checkbox"/> 515	Effectiveness (Steel Protective Coatings)	LIMITED EFFECTIVENESS	3	171	171	Square Feet

**General Comments**

<b>Span 1</b>	<b>Beam 2</b>
<b>Plate Girder</b>	

Element Number	Element Name	Total Qty	CS1 Qty	CS2 Qty	CS3 Qty	CS4 Qty
107	Steel Open Girder/Beam	67	0	55	8	4 Feet
515	Steel Protective Coating	603	390	0	165	48 Square Feet

Element Number	Defect Type	Defect Description	CS	CS Qty	Maint Qty
<input checked="" type="checkbox"/> 107	Corrosion	PAR: CORROSION ALONG WEB AND BOTTOM FLANGE UP TO 46 INCH LONG X 5 INCH HIGH WITH NO MEASURABLE LOSS OF SECTION IN WEB AND 46 INCH LONG X 6 INCH WIDE DOWN TO 3/8 INCH RESIDUAL BOTTOM FLANGE EXTENDING FROM END BENT 1	4	4	4 Feet
<input checked="" type="checkbox"/> 107	Corrosion	CORROSION ALONG WEB AND BOTTOM FLANGE UP TO 96 INCH LONG X 7 INCH HIGH WITH NO MEASURABLE LOSS OF SECTION IN WEB AND 96 INCH LONG X 12 INCH WIDE DOWN TO 3/4 INCH RESIDUAL BOTTOM FLANGE AT BENT 1	3	8	8 Feet
<input checked="" type="checkbox"/> 107	Corrosion	AREAS OF OF SURFACE CORROSION ALONG WEB AND BOTH FLANGES IN VARIOUS LOCATIONS	2	55	Feet
<input checked="" type="checkbox"/> 515	Effectiveness (Steel Protective Coatings)	COATING FAILURE	4	48	48 Square Feet
<input checked="" type="checkbox"/> 515	Effectiveness (Steel Protective Coatings)	LIMITED EFFECTIVENESS	3	165	165 Square Feet

**General Comments**

<b>Span 1</b>	<b>Beam 3</b>
<b>Plate Girder</b>	

Element Number	Element Name	Total Qty	CS1 Qty	CS2 Qty	CS3 Qty	CS4 Qty
107	Steel Open Girder/Beam	67	0	62	0	5 Feet
515	Steel Protective Coating	603	385	150	0	68 Square Feet

Element Number	Defect Type	Defect Description	CS	CS Qty	Maint Qty
<input checked="" type="checkbox"/> 107	Corrosion	PAR: CORROSION ALONG WEB AND BOTTOM FLANGE UP TO 50 INCH LONG X 13 INCH HIGH WITH UP TO 1/16 INCH DEEP PAINTED OVER PITTING IN WEB AND 50 INCH LONG X 6 INCH WIDE DOWN TO 1/2 INCH RESIDUAL BOTTOM FLANGE EXTENDING FROM END BENT 1	4	5	5 Feet
<input checked="" type="checkbox"/> 107	Corrosion	AREAS OF OF SURFACE CORROSION ALONG WEB AND BOTH FLANGES IN VARIOUS LOCATIONS	2	50	Feet
<input checked="" type="checkbox"/> 107	Corrosion	CORROSION WITH NO MEASURABLE LOSS OF SECTION ALONG WEB AND BOTTOM FLANGE UP TO 34 INCH LONG X 6 INCH HIGH IN WEB AND 34 INCH LONG X 12 INCH WIDE IN BOTTOM FLANGE EXTENDING FROM BENT 1	2	12	Feet
<input checked="" type="checkbox"/> 515	Effectiveness (Steel Protective Coatings)	COATING FAILURE	4	68	68 Square Feet
<input checked="" type="checkbox"/> 515	Effectiveness (Steel Protective Coatings)	SUBSTANTIALLY EFFECTIVE	2	150	150 Square Feet

**General Comments**

**Span 1** **Beam 4**  
**Plate Girder**

Element Number	Element Name	Total Qty	CS1 Qty	CS2 Qty	CS3 Qty	CS4 Qty
107	Steel Open Girder/Beam	67	0	62	0	5 Feet
515	Steel Protective Coating	603	385	150	0	68 Square Feet

Element Number	Defect Type	Defect Description	CS	CS Qty	Maint Qty
<input checked="" type="checkbox"/> 107	Corrosion	PAR: CORROSION ALONG WEB AND BOTTOM FLANGE UP TO 58 INCH LONG X 12 INCH HIGH DOWN TO 3/8 INCH RESIDUAL WEB AND 58 INCH LONG X 6 INCH WIDE DOWN TO 5/16 INCH RESIDUAL BOTTOM FLANGE EXTENDING FROM END BENT 1	4	5	5 Feet
<input checked="" type="checkbox"/> 107	Corrosion	AREAS OF OF SURFACE CORROSION ALONG WEB AND BOTH FLANGES IN VARIOUS LOCATIONS	2	50	Feet
<input checked="" type="checkbox"/> 107	Corrosion	CORROSION WITH NO MEASURABLE LOSS OF SECTION ALONG WEB AND BOTTOM FLANGE UP TO 12 FOOT LONG X 6 INCH HIGH IN WEB, AND 12 FOOT LONG X 12 INCH WIDE IN BOTTOM FLANGE EXTENDING FROM BENT 1	2	12	Feet
<input checked="" type="checkbox"/> 515	Effectiveness (Steel Protective Coatings)	COATING FAILURE	4	68	68 Square Feet
<input checked="" type="checkbox"/> 515	Effectiveness (Steel Protective Coatings)	SUBSTANTIALLY EFFECTIVE	2	150	150 Square Feet

General Comments

**Span 1** **Wearing Surface**  
**Asphalt Wearing Surface**

Element Number	Element Name	Total Qty	CS1 Qty	CS2 Qty	CS3 Qty	CS4 Qty
510	Wearing Surface	1,807	1,627	150	30	0 Square Feet

Element Number	Defect Type	Defect Description	CS	CS Qty	Maint Qty
<input checked="" type="checkbox"/> 510	Crack (Wearing Surface)	UP TO 3/4 INCH WIDE TRANSVERSE CRACK ALONG END BENT 1 FILL FACE	3	30	30 Square Feet
<input checked="" type="checkbox"/> 510	Crack (Wearing Surface)	UP TO 1/16 INCH MAP CRACKING IN VARIOUS LOCATIONS	2	150	150 Square Feet

General Comments

**Span 1** **Left Bridge Rail**  
**Concrete Railing**

Element Number	Element Name	Total Qty	CS1 Qty	CS2 Qty	CS3 Qty	CS4 Qty
331	Reinforced Concrete Bridge Railing	69	0	52	17	0 Feet

Element Number	Defect Type	Defect Description	CS	CS Qty	Maint Qty
<input checked="" type="checkbox"/> 331	Delamination/Spall	(15) UP TO 3 INCHES X 25 INCHES X 2 INCHES SPALLS WITH EXPOSED REINFORCING AT RANDOM THROUGHOUT RAIL POSTS	3	15	15 Feet

Structure Number: **750171**Inspection Date: **07/12/2023**

<input checked="" type="checkbox"/>	<b>331</b>	Delamination/Spall	14 INCH X 12 INCH AREA OF DELAMINATION WITH 12 INCH X 5 INCH X 2 INCH DEEP SPALL IN FACE OF RAIL AT END BENT 1	3	2	2 Feet
<input checked="" type="checkbox"/>	<b>331</b>	Cracking (RC and Other)	UP TO 0.016 INCH TRANSVERSE AND VERTICAL CRACKS IN TOP AND BOTH FACES OF RAIL IN VARIOUS LOCATIONS	2	5	Feet
<input checked="" type="checkbox"/>	<b>331</b>	Delamination/Spall	(3) 2 INCHES X 10 INCHES DELAMINATIONS AT RANDOM THROUGHOUT RAIL POSTS.	2	3	3 Feet
<input checked="" type="checkbox"/>	<b>331</b>	Delamination/Spall	WORN CONCRETE WITH EXPOSED AGGREGATE THROUGHOUT RAIL AND TOP OF CURB	2	44	44 Feet

**General Comments****Span 1****Right Bridge Rail****Concrete Railing**

Element Number	Element Name	Total Qty	CS1 Qty	CS2 Qty	CS3 Qty	CS4 Qty
331	Reinforced Concrete Bridge Railing	69	0	44	25	0 Feet

Element Number	Defect Type	Defect Description	CS	CS Qty	Maint Qty
<input checked="" type="checkbox"/>	<b>331</b>	Delamination/Spall			
		(24) UP TO 3 INCHES X 16 INCHES X 2 INCHES SPALLS WITH EXPOSED REINFORCING AT RANDOM THROUGHOUT RAIL POSTS.	3	24	24 Feet
<input checked="" type="checkbox"/>	<b>331</b>	Delamination/Spall			
		9 INCHES X 4 INCHES X 2 INCHES DEEP SPALL ON BOTTOM OUTSIDE FACE OF RAIL NEAR MID SPAN	3	1	1 Feet
<input checked="" type="checkbox"/>	<b>331</b>	Cracking (RC and Other)			
		UP TO 0.016 INCH TRANSVERSE AND VERTICAL CRACKS IN TOP AND BOTH FACES OF RAIL IN VARIOUS LOCATIONS	2	12	Feet
<input checked="" type="checkbox"/>	<b>331</b>	Delamination/Spall			
		(11) 2 INCHES X UP TO 16 INCHES DELAMINATIONS AT RAIL POSTS	2	11	11 Feet
<input checked="" type="checkbox"/>	<b>331</b>	Delamination/Spall			
		WORN CONCRETE WITH EXPOSED AGGREGATE THROUGHOUT RAIL AND CURB	2	21	21 Feet

**General Comments****Span 1****Near Bearing****Other Bearing**

Element Number	Element Name	Total Qty	CS1 Qty	CS2 Qty	CS3 Qty	CS4 Qty
316	Other Bearings	1	0	0	1	0 Each
515	Steel Protective Coating	1	0	0	0	1 Square Feet

Element Number	Defect Type	Defect Description	CS	CS Qty	Maint Qty
<input checked="" type="checkbox"/>	<b>316</b>	Corrosion			
		CORROSION THROUGHOUT	3	1	1 Each
<input checked="" type="checkbox"/>	<b>515</b>	Effectiveness (Steel Protective Coatings)			
		COATING FAILURE	4	1	1 Square Feet

**General Comments**

**Span 1 Far Bearing**  
**Other Bearing**

Element Number	Element Name	Total Qty	CS1 Qty	CS2 Qty	CS3 Qty	CS4 Qty	
316	Other Bearings	1	0	1	0	0	Each
515	Steel Protective Coating	1	0	0	1	0	Square Feet

Element Number	Defect Type	Defect Description	CS	CS Qty	Maint Qty	
<input checked="" type="checkbox"/> 316	Corrosion	SURFACE CORROSION THROUGHOUT	2	1		Each
<input checked="" type="checkbox"/> 515	Effectiveness (Steel Protective Coatings)	LIMITED EFFECTIVENESS	3	1	1	Square Feet

**General Comments**

**Span 1 Near Bearing**  
**Other Bearing**

Element Number	Element Name	Total Qty	CS1 Qty	CS2 Qty	CS3 Qty	CS4 Qty	
316	Other Bearings	1	0	0	1	0	Each
515	Steel Protective Coating	1	0	0	0	1	Square Feet

Element Number	Defect Type	Defect Description	CS	CS Qty	Maint Qty	
<input checked="" type="checkbox"/> 316	Corrosion	CORROSION THROUGHOUT	3	1	1	Each
<input checked="" type="checkbox"/> 515	Effectiveness (Steel Protective Coatings)	COATING FAILURE	4	1	1	Square Feet

**General Comments**

**Span 1 Far Bearing**  
**Other Bearing**

Element Number	Element Name	Total Qty	CS1 Qty	CS2 Qty	CS3 Qty	CS4 Qty	
316	Other Bearings	1	0	1	0	0	Each
515	Steel Protective Coating	1	0	0	1	0	Square Feet

Element Number	Defect Type	Defect Description	CS	CS Qty	Maint Qty	
<input checked="" type="checkbox"/> 316	Corrosion	SURFACE CORROSION THROUGHOUT	2	1		Each
<input checked="" type="checkbox"/> 515	Effectiveness (Steel Protective Coatings)	LIMITED EFFECTIVENESS	3	1	1	Square Feet

**General Comments**

**Span 1 Near Bearing**  
**Other Bearing**

Element Number	Element Name	Total Qty	CS1 Qty	CS2 Qty	CS3 Qty	CS4 Qty	
316	Other Bearings	1	0	0	1	0	Each
515	Steel Protective Coating	1	0	0	0	1	Square Feet

Element Number	Defect Type	Defect Description	CS	CS Qty	Maint Qty	
<input checked="" type="checkbox"/> 316	Corrosion	CORROSION THROUGHOUT	3	1	1	Each



<input checked="" type="checkbox"/>	515	Effectiveness (Steel Protective Coatings)	COATING FAILURE	4	1	1	Square Feet
-------------------------------------	-----	---	-----------------	---	---	---	-------------

**General Comments****Span 1 Far Bearing****Other Bearing**

Element Number	Element Name	Total Qty	CS1 Qty	CS2 Qty	CS3 Qty	CS4 Qty	
316	Other Bearings	1	0	1	0	0	Each
515	Steel Protective Coating	1	0	0	1	0	Square Feet

Element Number	Defect Type	Defect Description	CS	CS Qty	Maint Qty	
<input checked="" type="checkbox"/> 316	Corrosion	SURFACE CORROSION THROUGHOUT	2	1		Each
<input checked="" type="checkbox"/> 515	Effectiveness (Steel Protective Coatings)	LIMITED EFFECTIVENESS	3	1	1	Square Feet

**General Comments****Span 1 Near Bearing****Other Bearing**

Element Number	Element Name	Total Qty	CS1 Qty	CS2 Qty	CS3 Qty	CS4 Qty	
316	Other Bearings	1	0	0	1	0	Each
515	Steel Protective Coating	1	0	0	0	1	Square Feet

Element Number	Defect Type	Defect Description	CS	CS Qty	Maint Qty	
<input checked="" type="checkbox"/> 316	Corrosion	CORROSION THROUGHOUT	3	1	1	Each
<input checked="" type="checkbox"/> 515	Effectiveness (Steel Protective Coatings)	COATING FAILURE	4	1	1	Square Feet

**General Comments****Span 1 Far Bearing****Other Bearing**

Element Number	Element Name	Total Qty	CS1 Qty	CS2 Qty	CS3 Qty	CS4 Qty	
316	Other Bearings	1	1	0	0	0	Each
515	Steel Protective Coating	1	0	0	1	0	Square Feet

Element Number	Defect Type	Defect Description	CS	CS Qty	Maint Qty	
<input checked="" type="checkbox"/> 316	Corrosion	SURFACE CORROSION THROUGHOUT	2			Each
<input checked="" type="checkbox"/> 515	Effectiveness (Steel Protective Coatings)	LIMITED EFFECTIVENESS	3	1	1	Square Feet

**General Comments**

**Span 2****Deck****Reinforced Concrete Deck**

Element Number	Element Name	Total Qty	CS1 Qty	CS2 Qty	CS3 Qty	CS4 Qty	
12	Reinforced Concrete Deck	2,161	1,736	400	25	0	Square Feet

Element Number	Defect Type	Defect Description	CS	CS Qty	Maint Qty	
<input checked="" type="checkbox"/> 12	Delamination/Spall	(5) UP TO 48 INCH X 24 INCH X 2 INCHES DEEP SPALLS WITH EXPOSED REBAR IN BOTTOM OF DECK AND EAST OVERHANG ALONG BEAM 3 AND BEAM 4 TOP FLANGE	3	25	25	Square Feet
<input checked="" type="checkbox"/> 12	Cracking (RC and Other)	UP TO 0.016 INCH TRANSVERSE CRACKS IN BOTTOM OF DECK IN VARIOUS LOCATIONS	2	400	400	Square Feet

**General Comments****Span 2****Wearing Surface****Asphalt Wearing Surface**

Element Number	Element Name	Total Qty	CS1 Qty	CS2 Qty	CS3 Qty	CS4 Qty	
510	Wearing Surface	1,759	1,689	22	48	0	Square Feet

Element Number	Defect Type	Defect Description	CS	CS Qty	Maint Qty	
<input checked="" type="checkbox"/> 510	Crack (Wearing Surface)	UP TO 1/16 INCH MAP CRACKING IN VARIOUS LOCATIONS	3	40	40	Square Feet
<input checked="" type="checkbox"/> 510	Patched Area/Pothole (Wearing Surface)	PAR: UP TO 1/2 INCH WIDE TRANSVERSE CRACKS ALONG BENT 1 WITH (4) SPALLS UP TO 60 INCH X 6 INCH X FULL DEPTH	3	8	8	Square Feet
<input checked="" type="checkbox"/> 510	Crack (Wearing Surface)	UP TO 0.016 INCH LONGITUDINAL CRACKS IN VARIOUS LOCATIONS	2	22	22	Square Feet

**General Comments****Span 2****Left Bridge Rail****Concrete Railing**

Element Number	Element Name	Total Qty	CS1 Qty	CS2 Qty	CS3 Qty	CS4 Qty	
331	Reinforced Concrete Bridge Railing	67	0	62	5	0	Feet

Element Number	Defect Type	Defect Description	CS	CS Qty	Maint Qty	
<input checked="" type="checkbox"/> 331	Delamination/Spall	(5) UP TO 3 INCHES X 17 INCHES X 2 INCHES SPALLS WITH EXPOSED REINFORCING AT RANDOM THROUGHOUT RAIL POSTS.	3	5	5	Feet
<input checked="" type="checkbox"/> 331	Cracking (RC and Other)	UP TO 0.016 INCH TRANSVERSE AND VERTICAL CRACKS IN TOP AND BOTH FACES OF RAIL IN VARIOUS LOCATIONS	2	10		Feet
<input checked="" type="checkbox"/> 331	Delamination/Spall	(7) UP TO 2 INCHES X 14 INCHES DELAMINATIONS AT RANDOM THROUGHOUT RAIL POSTS.	2	7	7	Feet
<input checked="" type="checkbox"/> 331	Delamination/Spall	WORN CONCRETE WITH EXPOSED AGGREGATE THROUGHOUT RAIL AND TOP OF CURB	2	45	45	Feet

**General Comments**

**Span 2****Right Bridge Rail****Concrete Railing**

Element Number	Element Name	Total Qty	CS1 Qty	CS2 Qty	CS3 Qty	CS4 Qty
331	Reinforced Concrete Bridge Railing	67	0	65	2	0 Feet

Element Number	Defect Type	Defect Description	CS	CS Qty	Maint Qty
<input checked="" type="checkbox"/> 331	Delamination/Spall	(2) UP TO 2 INCHES X 14 INCHES X 2 INCHES SPALLS WITH EXPOSED REINFORCING AT RANDOM THROUGHOUT RAIL POSTS.	3	2	2 Feet
<input checked="" type="checkbox"/> 331	Cracking (RC and Other)	UP TO 0.016 INCH TRANSVERSE AND VERTICAL CRACKS IN TOP AND BOTH FACES OF RAIL IN VARIOUS LOCATIONS	2	22	Feet
<input checked="" type="checkbox"/> 331	Delamination/Spall	(3) UP TO 2 INCHES X 14 INCHES DELAMINATIONS AT RANDOM THROUGHOUT RAIL POSTS.	2	3	3 Feet
<input checked="" type="checkbox"/> 331	Delamination/Spall	WORN CONCRETE WITH EXPOSED AGGREGATE THROUGHOUT RAIL AND TOP OF CURB	2	40	40 Feet

**General Comments****Span 2****Beam 1****Plate Girder**

Element Number	Element Name	Total Qty	CS1 Qty	CS2 Qty	CS3 Qty	CS4 Qty
107	Steel Open Girder/Beam	67	40	18	0	9 Feet
515	Steel Protective Coating	603	519	0	48	36 Square Feet

Element Number	Defect Type	Defect Description	CS	CS Qty	Maint Qty
<input checked="" type="checkbox"/> 107	Corrosion	PAR: CORROSION ALONG WEB AND BOTTOM FLANGE UP TO 30 INCH LONG X 14 INCH HIGH DOWN TO 3/8 INCH RESIDUAL WEB AND 30 INCH LONG X 12 INCH WIDE DOWN TO 1/2 INCH RESIDUAL BOTTOM FLANGE EXTENDING FROM BENT 2	4	3	3 Feet
<input checked="" type="checkbox"/> 107	Corrosion	PAR: CORROSION ALONG WEB AND BOTTOM FLANGE UP TO 69 INCH LONG X 12 INCH HIGH DOWN TO 1/4 INCH RESIDUAL WEB AND 69 INCH LONG X 12 INCH WIDE DOWN TO 3/8 INCH RESIDUAL BOTTOM FLANGE EXTENDING FROM BENT 1	4	6	6 Feet
<input checked="" type="checkbox"/> 107	Corrosion	AREAS OF OF SURFACE CORROSION ALONG WEB AND BOTH FLANGES IN VARIOUS LOCATIONS	2	16	Feet
<input checked="" type="checkbox"/> 107	Distortion	24 INCH LONG X UP TO 1 INCHES DISTORTION TO BOTTOM FLANGE 19.5 FEET FROM BENT 2.	2	2	Feet
<input checked="" type="checkbox"/> 515	Effectiveness (Steel Protective Coatings)	COATING FAILURE	4	36	36 Square Feet
<input checked="" type="checkbox"/> 515	Effectiveness (Steel Protective Coatings)	LIMITED EFFECTIVENESS	3	48	48 Square Feet

**General Comments**

**Span 2****Near Bearing****Other Bearing**

Element Number	Element Name	Total Qty	CS1 Qty	CS2 Qty	CS3 Qty	CS4 Qty	
316	Other Bearings	1	0	1	0	0	Each
515	Steel Protective Coating	1	0	0	1	0	Square Feet

Element Number	Defect Type	Defect Description	CS	CS Qty	Maint Qty	
<input checked="" type="checkbox"/> 316	Corrosion	SURFACE CORROSION THROUGHOUT	2	1		Each
<input checked="" type="checkbox"/> 515	Effectiveness (Steel Protective Coatings)	LIMITED EFFECTIVENESS	3	1	1	Square Feet

**General Comments****Span 2****Far Bearing****Other Bearing**

Element Number	Element Name	Total Qty	CS1 Qty	CS2 Qty	CS3 Qty	CS4 Qty	
316	Other Bearings	1	0	0	1	0	Each
515	Steel Protective Coating	1	0	0	0	1	Square Feet

Element Number	Defect Type	Defect Description	CS	CS Qty	Maint Qty	
<input checked="" type="checkbox"/> 316	Corrosion	CORROSION THROUGHOUT	3	1	1	Each
<input checked="" type="checkbox"/> 515	Effectiveness (Steel Protective Coatings)	COATING FAILURE	4	1	1	Square Feet

**General Comments****Span 2****Beam 2****Plate Girder**

Element Number	Element Name	Total Qty	CS1 Qty	CS2 Qty	CS3 Qty	CS4 Qty	
107	Steel Open Girder/Beam	67	40	22	5	0	Feet
515	Steel Protective Coating	603	523	0	48	32	Square Feet

Element Number	Defect Type	Defect Description	CS	CS Qty	Maint Qty	
<input checked="" type="checkbox"/> 107	Corrosion	CORROSION ALONG WEB AND BOTTOM FLANGE UP TO 60 INCH LONG X 12 INCH HIGH DOWN TO 7/16 INCH RESIDUAL WEB AND 60 INCH LONG X 12 INCH WIDE DOWN TO 3/4 INCH RESIDUAL BOTTOM FLANGE EXTENDING FROM BENT 2	3	5	5	Feet
<input checked="" type="checkbox"/> 107	Corrosion	AREAS OF OF SURFACE CORROSION ALONG WEB AND BOTH FLANGES IN VARIOUS LOCATIONS	2	16		Feet
<input checked="" type="checkbox"/> 107	Corrosion	CORROSION WITH NO MEASURABLE LOSS OF SECTION ALONG WEB AND BOTTOM FLANGE UP TO 34 INCH LONG X 5 INCH HIGH IN WEB AND 34 INCH LONG X 12 INCH WIDE IN BOTTOM FLANGE EXTENDING FROM BENT 1	2	3		Feet
<input checked="" type="checkbox"/> 107	Distortion	30 INCH LONG X UP TO 1.5 INCHES DISTORTION TO BOTTOM FLANGE 19.5 FEET FROM BENT 2.	2	3		Feet
<input checked="" type="checkbox"/> 515	Effectiveness (Steel Protective Coatings)	COATING FAILURE	4	32	32	Square Feet

<input checked="" type="checkbox"/>	<b>515</b>	Effectiveness (Steel Protective Coatings)	LIMITED EFFECTIVENESS	3	48	48	Square Feet
-------------------------------------	------------	---	-----------------------	---	----	----	-------------

**General Comments**

**Span 2 Near Bearing**  
**Other Bearing**

Element Number	Element Name	Total Qty	CS1 Qty	CS2 Qty	CS3 Qty	CS4 Qty	
316	Other Bearings	1	0	0	1	0	Each
515	Steel Protective Coating	1	0	0	0	1	Square Feet

Element Number	Defect Type	Defect Description	CS	CS Qty	Maint Qty		
<input checked="" type="checkbox"/>	<b>316</b>	Corrosion	CORROSION THROUGHOUT	3	1	1	Each
<input checked="" type="checkbox"/>	<b>515</b>	Effectiveness (Steel Protective Coatings)	COATING FAILURE	4	1	1	Square Feet

**General Comments**

**Span 2 Far Bearing**  
**Other Bearing**

Element Number	Element Name	Total Qty	CS1 Qty	CS2 Qty	CS3 Qty	CS4 Qty	
316	Other Bearings	1	0	0	1	0	Each
515	Steel Protective Coating	1	0	0	0	1	Square Feet

Element Number	Defect Type	Defect Description	CS	CS Qty	Maint Qty		
<input checked="" type="checkbox"/>	<b>316</b>	Corrosion	CORROSION THROUGHOUT	3	1	1	Each
<input checked="" type="checkbox"/>	<b>515</b>	Effectiveness (Steel Protective Coatings)	COATING FAILURE	4	1	1	Square Feet

**General Comments**

**Span 2 Beam 3**  
**Plate Girder**

Element Number	Element Name	Total Qty	CS1 Qty	CS2 Qty	CS3 Qty	CS4 Qty	
107	Steel Open Girder/Beam	67	55	4	4	4	Feet
515	Steel Protective Coating	603	571	0	0	32	Square Feet

Element Number	Defect Type	Defect Description	CS	CS Qty	Maint Qty		
<input checked="" type="checkbox"/>	<b>107</b>	Corrosion	PAR: CORROSION ALONG WEB AND BOTTOM FLANGE UP TO 47 INCH LONG X 7 INCH HIGH DOWN TO 3/8 INCH RESIDUAL WEB AND 32 INCH LONG X 12 INCH WIDE DOWN TO 1/2 INCH RESIDUAL BOTTOM FLANGE EXTENDING FROM BENT 1	4	4	4	Feet
<input checked="" type="checkbox"/>	<b>107</b>	Corrosion	CORROSION ALONG WEB AND BOTTOM FLANGE UP TO 48 INCH LONG X 12 INCH HIGH DOWN TO 7/16 INCH RESIDUAL WEB AND 48 INCH LONG X 12 INCH WIDE DOWN TO 3/4 INCH RESIDUAL BOTTOM FLANGE EXTENDING FROM BENT 2	3	4	4	Feet

Structure Number: **750171**

Inspection Date: **07/12/2023**

<input checked="" type="checkbox"/>	<b>107</b>	Distortion	48 INCH LONG X UP TO 2.5 INCHES AREA OF DISTORTION TO BOTTOM FLANGE 19 FEET FROM BENT 1.	2	4	Feet
<input checked="" type="checkbox"/>	<b>107</b>	Connection	MISSING RIVET REPLACED WITH BOLT TO FIX PREVIOUS PAR-- (1) MISSING BOLT IN COVER PLATE CONNECTION 19 FEET FROM BENT 2. PRIOR TO 2021 INSPECTION	1		Feet
<input checked="" type="checkbox"/>	<b>107</b>	Damage	14 INCHES WELD REPAIR TO INTERMEDIATE DIAPHRAGM ON EAST FACE 20 FEET FROM BENT 2; PRIOR TO 2021 INSPECTION	1		Feet
<input checked="" type="checkbox"/>	<b>515</b>	Effectiveness (Steel Protective Coatings)	COATING FAILURE	4	32	32 Square Feet

**General Comments**

**Span 2 Near Bearing**  
**Other Bearing**

Element Number	Element Name	Total Qty	CS1 Qty	CS2 Qty	CS3 Qty	CS4 Qty	
316	Other Bearings	1	0	1	0	0	Each
515	Steel Protective Coating	1	0	0	1	0	Square Feet

Element Number	Defect Type	Defect Description	CS	CS Qty	Maint Qty	
<input checked="" type="checkbox"/>	<b>316</b>	Corrosion				SURFACE CORROSION THROUGHOUT
			2	1		Each
<input checked="" type="checkbox"/>	<b>515</b>	Effectiveness (Steel Protective Coatings)				LIMITED EFFECTIVENESS
			3	1	1	Square Feet

**General Comments**

**Span 2 Far Bearing**  
**Other Bearing**

Element Number	Element Name	Total Qty	CS1 Qty	CS2 Qty	CS3 Qty	CS4 Qty	
316	Other Bearings	1	0	0	1	0	Each
515	Steel Protective Coating	1	0	0	0	1	Square Feet

Element Number	Defect Type	Defect Description	CS	CS Qty	Maint Qty	
<input checked="" type="checkbox"/>	<b>316</b>	Corrosion				CORROSION THROUGHOUT
			3	1	1	Each
<input checked="" type="checkbox"/>	<b>515</b>	Effectiveness (Steel Protective Coatings)				COATING FAILURE
			4	1	1	Square Feet

**General Comments**

**Span 2 Beam 4**  
**Plate Girder**

Element Number	Element Name	Total Qty	CS1 Qty	CS2 Qty	CS3 Qty	CS4 Qty	
107	Steel Open Girder/Beam	67	46	0	15	6	Feet
515	Steel Protective Coating	603	555	0	0	48	Square Feet

Element Number	Defect Type	Defect Description	CS	CS Qty	Maint Qty	
----------------	-------------	--------------------	----	--------	-----------	--

Structure Number: **750171**

Inspection Date: **07/12/2023**

<input checked="" type="checkbox"/>	107	Corrosion	PAR: CORROSION ALONG BOTTOM FLANGE UP TO 72 INCH LONG X 12 INCH WIDE DOWN TO 1/2 INCH RESIDUAL BOTTOM FLANGE EXTENDING FROM BENT 1	4	6	6	Feet
<input checked="" type="checkbox"/>	107	Corrosion	CORROSION ALONG WEB AND BOTTOM FLANGE UP TO 70 INCH LONG X 12 INCH HIGH DOWN TO 7/16 INCH RESIDUAL WEB AND 66 INCH LONG X 12 INCH WIDE DOWN TO 3/4 INCH RESIDUAL BOTTOM FLANGE EXTENDING FROM BENT 2	3	6	6	Feet
<input checked="" type="checkbox"/>	107	Damage	IMPACT 9 FEET LONG X UP TO 2 INCHES VERTICAL DISTORTION AND APPROXIMATELY 3 INCHES LATERAL DISTORTION TO BOTTOM FLANGE. NO PAR ISSUED DUE TO LATERAL BRACING ADDED BETWEEN BEAMS PRIOR TO 2021 INSPECTION	3	9		Feet
<input checked="" type="checkbox"/>	107	Connection	DIAPHRAGM CONNECTION HAS BEEN REPAIRED WITH (2) 7 INCHES X 13 INCHES X 1/2 INCHES PLATES WELDED TO WEST FACE 12 FEET FROM BENT 2.	2			Feet
<input checked="" type="checkbox"/>	107	Corrosion	72 INCH X 12 INCH PLATE REPAIR ALONG BOTH FACES OF WEB EXTENDING FROM BENT 1	2			Feet
<input checked="" type="checkbox"/>	107	Connection	RIVETS HAVE BEEN REPLACED WITH BOLTS TO REPAIR PREVIOUS PAR-- (5) MISSING BOLTS IN COVER PLATE CONNECTION AT MID SPAN. PRIOR TO 2021 INSPETCION	1			Feet
<input checked="" type="checkbox"/>	107	Damage	4 INCHES CRACK REPAIR IN BOTTOM FLANGE 19 FEET FROM BENT 2. PRIOR TO 2021 INSPECTION	1			Feet
<input checked="" type="checkbox"/>	515	Effectiveness (Steel Protective Coatings)	COATING FAILURE	4	48	48	Square Feet

**General Comments**

**Span 2 Far Bearing**

**Other Bearing**

Element Number	Element Name	Total Qty	CS1 Qty	CS2 Qty	CS3 Qty	CS4 Qty
316	Other Bearings	1	0	0	1	0 Each
515	Steel Protective Coating	1	0	0	0	1 Square Feet

Element Number	Defect Type	Defect Description	CS	CS Qty	Maint Qty	
<input checked="" type="checkbox"/>	316	Corrosion	CORROSION THROUGHOUT	3	1	1 Each
<input checked="" type="checkbox"/>	515	Effectiveness (Steel Protective Coatings)	COATING FAILURE	4	1	1 Square Feet

**General Comments**

**Span 3 Deck**

**Reinforced Concrete Deck**

Element Number	Element Name	Total Qty	CS1 Qty	CS2 Qty	CS3 Qty	CS4 Qty
12	Reinforced Concrete Deck	1,790	1,588	200	2	0 Square Feet

Element Number	Defect Type	Defect Description	CS	CS Qty	Maint Qty	
<input checked="" type="checkbox"/>	12	Delamination/Spall	15 INCHES X 9 INCHES X 4 INCHES DEEP SPALL WITH EXPOSED REBAR AT BENT 2 UNDER EAST OVERHANG.	3	1	1 Square Feet

Structure Number: **750171**

Inspection Date: **07/12/2023**

<input checked="" type="checkbox"/>	<b>12</b>	Delamination/Spall	6 INCH DIAMETER X 1/2 INCH DEEP SPALL WITH EXPOSED REBAR IN BOTTOM OF WEST OVERHANG, APPROXIMATELY 2 FOOT FROM BENT 2	3	1	1	Square Feet
<input checked="" type="checkbox"/>	<b>12</b>	Cracking (RC and Other)	UP TO 0.016 INCH TRANSVERSE CRACKS IN BOTTOM OF DECK IN VARIOUS LOCATIONS	2	200	200	Square Feet

**General Comments**

**Span 3 Beam 1**  
**Plate Girder**

Element Number	Element Name	Total Qty	CS1 Qty	CS2 Qty	CS3 Qty	CS4 Qty	
107	Steel Open Girder/Beam	54	0	46	0	8	Feet
515	Steel Protective Coating	536	369	0	135	32	Square Feet

Element Number	Defect Type	Defect Description	CS	CS Qty	Maint Qty	
<input checked="" type="checkbox"/>	<b>107</b>	Corrosion		4	8	8 Feet
		PAR: CORROSION ALONG WEB AND BOTTOM FLANGE UP TO 96 INCH LONG X 14 INCH HIGH DOWN TO 3/8 INCH RESIDUAL WEB AND 82 INCH LONG X 12 INCH WIDE DOWN TO 5/8 INCH RESIDUAL BOTTOM FLANGE EXTENDING FROM BENT 2				
<input checked="" type="checkbox"/>	<b>107</b>	Corrosion		2	46	Feet
		AREAS OF OF SURFACE CORROSION ALONG WEB AND BOTH FLANGES IN VARIOUS LOCATIONS				
<input checked="" type="checkbox"/>	<b>515</b>	Effectiveness (Steel Protective Coatings)		4	32	32 Square Feet
		COATING FAILURE				
<input checked="" type="checkbox"/>	<b>515</b>	Effectiveness (Steel Protective Coatings)		3	135	138 Square Feet
		LIMITED EFFECTIVENESS				

**General Comments**

**Span 3 Beam 2**  
**Plate Girder**

Element Number	Element Name	Total Qty	CS1 Qty	CS2 Qty	CS3 Qty	CS4 Qty	
107	Steel Open Girder/Beam	54	0	54	0	0	Feet
515	Steel Protective Coating	536	320	0	192	24	Square Feet

Element Number	Defect Type	Defect Description	CS	CS Qty	Maint Qty	
<input checked="" type="checkbox"/>	<b>107</b>	Corrosion		2	48	Feet
		AREAS OF OF SURFACE CORROSION ALONG WEB AND BOTH FLANGES IN VARIOUS LOCATIONS				
<input checked="" type="checkbox"/>	<b>107</b>	Corrosion		2	6	Feet
		CORROSION WITH NO MEASURABLE LOSS OF SECTION ALONG WEB AND BOTTOM FLANGE UP TO 6 FOOT LONG X 6 INCH HIGH IN WEB, AND 6 FOOT LONG X 12 INCH WIDE IN BOTTOM FLANGE EXTENDING FROM BENT 1				
<input checked="" type="checkbox"/>	<b>515</b>	Effectiveness (Steel Protective Coatings)		4	24	24 Square Feet
		COATING FAILURE				
<input checked="" type="checkbox"/>	<b>515</b>	Effectiveness (Steel Protective Coatings)		3	192	192 Square Feet
		LIMITED EFFECTIVENESS				

**General Comments**



**Span 3** **Beam 3**  
**Plate Girder**

Element Number	Element Name	Total Qty	CS1 Qty	CS2 Qty	CS3 Qty	CS4 Qty
107	Steel Open Girder/Beam	54	0	49	0	5 Feet
515	Steel Protective Coating	536	320	0	196	20 Square Feet

Element Number	Defect Type	Defect Description	CS	CS Qty	Maint Qty
<input checked="" type="checkbox"/> 107	Corrosion	PAR: CORROSION ALONG WEB AND BOTTOM FLANGE UP TO 58 INCH LONG X 9 INCH HIGH DOWN TO 7/16 INCH RESIDUAL WEB AND 46 INCH LONG X 12 INCH WIDE DOWN TO 5/8 INCH RESIDUAL BOTTOM FLANGE EXTENDING FROM BENT 2	4	5	5 Feet
<input checked="" type="checkbox"/> 107	Corrosion	AREAS OF OF SURFACE CORROSION ALONG WEB AND BOTH FLANGES IN VARIOUS LOCATIONS	2	49	Feet
<input checked="" type="checkbox"/> 515	Effectiveness (Steel Protective Coatings)	COATING FAILURE	4	20	20 Square Feet
<input checked="" type="checkbox"/> 515	Effectiveness (Steel Protective Coatings)	LIMITED EFFECTIVENESS	3	196	196 Square Feet

**General Comments**

**Span 3** **Beam 4**  
**Plate Girder**

Element Number	Element Name	Total Qty	CS1 Qty	CS2 Qty	CS3 Qty	CS4 Qty
107	Steel Open Girder/Beam	54	0	50	0	4 Feet
515	Steel Protective Coating	536	320	0	200	16 Square Feet

Element Number	Defect Type	Defect Description	CS	CS Qty	Maint Qty
<input checked="" type="checkbox"/> 107	Corrosion	PAR: CORROSION ALONG WEB AND BOTTOM FLANGE UP TO 48 INCH LONG X 12 INCH HIGH DOWN TO 7/16 INCH RESIDUAL WEB AND 34 INCH LONG X 12 INCH WIDE DOWN TO 3/8 INCH RESIDUAL BOTTOM FLANGE EXTENDING FROM BENT 2	4	4	4 Feet
<input checked="" type="checkbox"/> 107	Corrosion	AREAS OF OF SURFACE CORROSION ALONG WEB AND BOTH FLANGES IN VARIOUS LOCATIONS	2	50	Feet
<input checked="" type="checkbox"/> 515	Effectiveness (Steel Protective Coatings)	COATING FAILURE	4	16	16 Square Feet
<input checked="" type="checkbox"/> 515	Effectiveness (Steel Protective Coatings)	LIMITED EFFECTIVENESS	3	200	200 Square Feet

**General Comments**

**Span 3** **Wearing Surface**  
**Asphalt Wearing Surface**

Element Number	Element Name	Total Qty	CS1 Qty	CS2 Qty	CS3 Qty	CS4 Qty
510	Wearing Surface	1,457	1,334	5	118	0 Square Feet

Element Number	Defect Type	Defect Description	CS	CS Qty	Maint Qty
----------------	-------------	--------------------	----	--------	-----------

Structure Number: **750171**

Inspection Date: **07/12/2023**

<input checked="" type="checkbox"/>	<b>510</b>	Crack (Wearing Surface)	40 SQUARE FEET OF TRANSVERSE AND LONGITUDINAL CRACKS UP TO 1/16 INCHES AT RANDOM THROUGHOUT NORTHBOUND LANE.	3	40	40	Square Feet
<input checked="" type="checkbox"/>	<b>510</b>	Crack (Wearing Surface)	UP TO 1/2 INCH TRANSVERSE CRACKS AND 96 INCH X 8 INCH AREA OF ALLIGATOR CRACKS ALONG BENT 2	3	39	39	Square Feet
<input checked="" type="checkbox"/>	<b>510</b>	Patched Area/Pothole (Wearing Surface)	PAR: UP TO 1/2 INCH WIDE TRANSVERSE CRACKS ALONG END BENT 2 WITH (4) SPALLS UP TO 38 INCH X 5 INCH X FULL DEPTH	3	39	39	Square Feet
<input checked="" type="checkbox"/>	<b>510</b>	Patched Area/Pothole (Wearing Surface)	PRIORITY MAINTENANCE REPAIR, UP TO 108 INCH X 8 INCH AT CENTERLINE ALONG BENT 2	2	5		Square Feet

**General Comments**

**Span 3 Left Bridge Rail Concrete Railing**

Element Number	Element Name	Total Qty	CS1 Qty	CS2 Qty	CS3 Qty	CS4 Qty	
331	Reinforced Concrete Bridge Railing	56	0	56	0	0	Feet

Element Number	Defect Type	Defect Description	CS	CS Qty	Maint Qty		
<input checked="" type="checkbox"/>	331	Delamination/Spall	(3) 2 INCHES X 14 INCHES DELAMINATIONS AT RANDOM THROUGHOUT RAIL POSTS.	2	3	3	Feet
<input checked="" type="checkbox"/>	331	Delamination/Spall	(7) UP TO 2 INCHES X 6 INCHES X 1 INCHES SPALLS WITH EXPOSED REINFORCING AT RANDOM THROUGHOUT RAIL POSTS.	2	7	7	Feet
<input checked="" type="checkbox"/>	331	Delamination/Spall	UP TO 0.016 INCH TRANSVERSE AND VERTICAL CRACKS IN TOP AND BOTH FACES OF RAIL IN VARIOUS LOCATIONS	2	5	5	Feet
<input checked="" type="checkbox"/>	331	Delamination/Spall	WORN CONCRETE WITH EXPOSED AGGREGATE THROUGHOUT RAIL AND TOP OF CURB	2	41	41	Feet

**General Comments**

**Span 3 Right Bridge Rail Concrete Railing**

Element Number	Element Name	Total Qty	CS1 Qty	CS2 Qty	CS3 Qty	CS4 Qty	
331	Reinforced Concrete Bridge Railing	56	0	56	0	0	Feet

Element Number	Defect Type	Defect Description	CS	CS Qty	Maint Qty		
<input checked="" type="checkbox"/>	331	Cracking (RC and Other)	UP TO 0.016 INCH TRANSVERSE AND VERTICAL CRACKS IN TOP AND BOTH FACES OF RAIL IN VARIOUS LOCATIONS	2	14		Feet
<input checked="" type="checkbox"/>	331	Delamination/Spall	2 INCHES X 10 INCHES DELAMINATION NORTH FACE RAIL POST 12 FEET FROM BENT 2.	2	1	1	Feet
<input checked="" type="checkbox"/>	331	Delamination/Spall	WORN CONCRETE WITH EXPOSED AGGREGATE THROUGHOUT RAIL AND TOP OF CURB	2	36	36	Feet
<input checked="" type="checkbox"/>	331	Patched Area	(5) UP TO 4 INCHES X 7 INCHES PATCHED AREAS AT RANDOM THROUGHOUT BOTTOM OF RAIL.	2	5		Square Feet

**General Comments**

**Span 3 Near Bearing**  
**Other Bearing**

Element Number	Element Name	Total Qty	CS1 Qty	CS2 Qty	CS3 Qty	CS4 Qty	
316	Other Bearings	1	0	0	1	0	Each
515	Steel Protective Coating	1	0	0	0	1	Square Feet

Element Number	Defect Type	Defect Description	CS	CS Qty	Maint Qty	
<input checked="" type="checkbox"/> 316	Corrosion	CORROSION THROUGHOUT	3	1	1	Each
<input checked="" type="checkbox"/> 515	Effectiveness (Steel Protective Coatings)	COATING FAILURE	4	1	1	Square Feet

**General Comments**

**Span 3 Far Bearing**  
**Other Bearing**

Element Number	Element Name	Total Qty	CS1 Qty	CS2 Qty	CS3 Qty	CS4 Qty	
316	Other Bearings	1	0	1	0	0	Each
515	Steel Protective Coating	1	0	0	1	0	Square Feet

Element Number	Defect Type	Defect Description	CS	CS Qty	Maint Qty	
<input checked="" type="checkbox"/> 316	Corrosion	SURFACE CORROSION THROUGHOUT	2	1		Each
<input checked="" type="checkbox"/> 515	Effectiveness (Steel Protective Coatings)	LIMITED EFFECTIVENESS	3	1	1	Square Feet

**General Comments**

**Span 3 Near Bearing**  
**Other Bearing**

Element Number	Element Name	Total Qty	CS1 Qty	CS2 Qty	CS3 Qty	CS4 Qty	
316	Other Bearings	1	0	0	1	0	Each
515	Steel Protective Coating	1	0	0	0	1	Square Feet

Element Number	Defect Type	Defect Description	CS	CS Qty	Maint Qty	
<input checked="" type="checkbox"/> 316	Corrosion	CORROSION THROUGHOUT	3	1	1	Each
<input checked="" type="checkbox"/> 515	Effectiveness (Steel Protective Coatings)	COATING FAILURE	4	1	1	Square Feet

**General Comments**

**Span 3 Far Bearing**  
**Other Bearing**

Element Number	Element Name	Total Qty	CS1 Qty	CS2 Qty	CS3 Qty	CS4 Qty	
316	Other Bearings	1	0	1	0	0	Each
515	Steel Protective Coating	1	0	0	1	0	Square Feet

Element Number	Defect Type	Defect Description	CS	CS Qty	Maint Qty	
<input checked="" type="checkbox"/> 316	Corrosion	SURFACE CORROSION THROUGHOUT	2	1		Each

Structure Number: **750171**

Inspection Date: **07/12/2023**

<input checked="" type="checkbox"/>	<b>515</b>	Effectiveness (Steel Protective Coatings)	LIMITED EFFECTIVENESS	3	1	1	Square Feet
-------------------------------------	------------	---	-----------------------	---	---	---	-------------

**General Comments**

**Span 3 Near Bearing**

**Other Bearing**

Element Number	Element Name	Total Qty	CS1 Qty	CS2 Qty	CS3 Qty	CS4 Qty	
316	Other Bearings	1	0	0	1	0	Each
515	Steel Protective Coating	1	0	0	0	1	Square Feet

Element Number	Defect Type	Defect Description	CS	CS Qty	Maint Qty		
<input checked="" type="checkbox"/>	<b>316</b>	Corrosion	CORROSION THROUGHOUT	3	1	1	Each
<input checked="" type="checkbox"/>	<b>515</b>	Effectiveness (Steel Protective Coatings)	COATING FAILURE	4	1	1	Square Feet

**General Comments**

**Span 3 Far Bearing**

**Other Bearing**

Element Number	Element Name	Total Qty	CS1 Qty	CS2 Qty	CS3 Qty	CS4 Qty	
316	Other Bearings	1	0	1	0	0	Each
515	Steel Protective Coating	1	0	0	1	0	Square Feet

Element Number	Defect Type	Defect Description	CS	CS Qty	Maint Qty		
<input checked="" type="checkbox"/>	<b>316</b>	Corrosion	SURFACE CORROSION THROUGHOUT	2	1		Each
<input checked="" type="checkbox"/>	<b>515</b>	Effectiveness (Steel Protective Coatings)	LIMITED EFFECTIVENESS	3	1	1	Square Feet

**General Comments**

**Span 3 Near Bearing**

**Other Bearing**

Element Number	Element Name	Total Qty	CS1 Qty	CS2 Qty	CS3 Qty	CS4 Qty	
316	Other Bearings	1	0	0	1	0	Each
515	Steel Protective Coating	1	0	0	0	1	Square Feet

Element Number	Defect Type	Defect Description	CS	CS Qty	Maint Qty		
<input checked="" type="checkbox"/>	<b>316</b>	Corrosion	CORROSION THROUGHOUT	3	1	1	Each
<input checked="" type="checkbox"/>	<b>515</b>	Effectiveness (Steel Protective Coatings)	COATING FAILURE	4	1	1	Square Feet

**General Comments**

**Span 3****Far Bearing****Other Bearing**

Element Number	Element Name	Total Qty	CS1 Qty	CS2 Qty	CS3 Qty	CS4 Qty	
316	Other Bearings	1	0	1	0	0	Each
515	Steel Protective Coating	1	0	0	1	0	Square Feet

Element Number	Defect Type	Defect Description	CS	CS Qty	Maint Qty	
<input checked="" type="checkbox"/> 316	Corrosion	SURFACE CORROSION THROUGHOUT	2	1		Each
<input checked="" type="checkbox"/> 515	Effectiveness (Steel Protective Coatings)	LIMITED EFFECTIVENESS	3	1	1	Square Feet

**General Comments****Bent 1****Cap 1****Reinforced Concrete Pier Cap**

Element Number	Element Name	Total Qty	CS1 Qty	CS2 Qty	CS3 Qty	CS4 Qty	
234	Reinforced Concrete Pier Cap	40	30	9	1	0	Feet

Element Number	Defect Type	Defect Description	CS	CS Qty	Maint Qty	
<input checked="" type="checkbox"/> 234	Delamination/Spall	11 INCHES X 11 INCHES X 5 INCHES SPALL NORTHEAST CORNER.	3	1	1	Feet
<input checked="" type="checkbox"/> 234	Cracking (RC and Other)	UP TO 0.016 INCH VERTICAL AND HORIZONTAL CRACK IN SPAN 2 FACE OF CAP BENEATH BAY 3	2	3		Feet
<input checked="" type="checkbox"/> 234	Delamination/Spall	6 FEET X 12 INCHES DELAMINATION BOTTOM OF CAP BETWEEN PILES 1 AND 2.	2	6	6	Feet

**General Comments****Bent 1****Pile 2****Reinforced Concrete Column**

Element Number	Element Name	Total Qty	CS1 Qty	CS2 Qty	CS3 Qty	CS4 Qty	
205	Reinforced Concrete Column	1	0	0	1	0	Each

Element Number	Defect Type	Defect Description	CS	CS Qty	Maint Qty	
<input checked="" type="checkbox"/> 205	Delamination/Spall	21 INCHES X 14 INCHES X 6 INCHES SPALL IN NORTHEAST CORNER, APPROXIMATELY 7 FEET FROM BOTTOM OF CAP	3		2	Each
<input checked="" type="checkbox"/> 205	Delamination/Spall	35 INCH X 15 INCH X 4 INCH SPALL IN NORTHWEST CORNER OF PILE, APPROXIMATELY 6 FOOT FROM BOTTOM OF CAP	3	1	4	Each

**General Comments****Bent 1****Pile 3****Reinforced Concrete Column**

Element Number	Element Name	Total Qty	CS1 Qty	CS2 Qty	CS3 Qty	CS4 Qty	
205	Reinforced Concrete Column	1	0	0	1	0	Each

Element Number	Defect Type	Defect Description	CS	CS Qty	Maint Qty	
----------------	-------------	--------------------	----	--------	-----------	--

<input checked="" type="checkbox"/>	<b>205</b>	Delamination/Spall	(2) UP TO 10 INCHES X 7 INCHES X 2 INCHES SPALLS WITH UP TO 24 INCHES X 4 INCHES AREA OF DELAMINATION ALONG NORTH CORNERS	3	1	3	Each
-------------------------------------	------------	--------------------	---	---	---	---	------

**General Comments**

**End Bent 1 Abutment**  
**Reinforced Concrete Abutment**

Element Number	Element Name	Total Qty	CS1 Qty	CS2 Qty	CS3 Qty	CS4 Qty
215	Reinforced Concrete Abutment	52	46	3	3	0 Feet

Element Number	Defect Type	Defect Description	CS	CS Qty	Maint Qty
<input checked="" type="checkbox"/>	<b>215</b>	Cracking (RC and Other)			
		UP TO 1/16 INCH VERTICAL CRACKS IN FACE OF BACKWALL IN VARIOUS LOCATIONS	3	3	3 Feet
<input checked="" type="checkbox"/>	<b>215</b>	Efflorescence/Rust Staining			
		UP TO 0.012 INCH DIAGONAL CRACKS WITH EFFLORESCENCE IN FACE OF BACKWALL BENEATH WEST OVERHANG	2	3	Feet

**General Comments**

**Bent 2 Cap 1**  
**Reinforced Concrete Pier Cap**

Element Number	Element Name	Total Qty	CS1 Qty	CS2 Qty	CS3 Qty	CS4 Qty
234	Reinforced Concrete Pier Cap	40	0	2	38	0 Feet

Element Number	Defect Type	Defect Description	CS	CS Qty	Maint Qty
<input checked="" type="checkbox"/>	<b>234</b>	Cracking (RC and Other)			
		UP TO 1/8 INCH HORIZONTAL CRACKS IN NORTH FACE OF CAP BENEATH BAYS 1 THRU 3	3	25	25 Feet
<input checked="" type="checkbox"/>	<b>234</b>	Cracking (RC and Other)			
		UP TO 1/8 INCH LONGITUDINAL CRACKS AND 13 FOOT LONG X 26 INCH WIDE AREA OF DELAMINATION IN BOTTOM OF CAP BETWEEN COLUMNS 1 AND 2	3		13 Feet
<input checked="" type="checkbox"/>	<b>234</b>	Cracking (RC and Other)			
		UP TO 1/8 INCH LONGITUDINAL CRACKS AND 13 FOOT LONG X 26 INCH WIDE AREA OF DELAMINATION IN BOTTOM OF CAP BETWEEN COLUMNS 2 AND 3	3	13	13 Feet
<input checked="" type="checkbox"/>	<b>234</b>	Efflorescence/Rust Staining			
		30 INCH X 30 INCH AREA OF HAIRLINE MAP CRACKING WITH RUST STAINING IN SOUTH FACE AT EAST END.	3		3 Feet
<input checked="" type="checkbox"/>	<b>234</b>	Cracking (RC and Other)			
		UP TO 0.02 INCH HORIZONTAL AND VERTICAL CRACKS IN EAST AND WEST ENDS OF CAP	2	2	Feet
<input checked="" type="checkbox"/>	<b>234</b>	Cracking (RC and Other)			
		UP TO 0.05 INCH VERTICAL CRACKS IN BOTH FACES OF CAP IN VARIOUS LOCATIONS	2		Feet
<input checked="" type="checkbox"/>	<b>234</b>	Delamination/Spall			
		12 INCHES X 8 INCHES AREA OF DELAMINATION IN NORTH FACE BENEATH BEAM 3.	2		2 Feet

**General Comments**

**Bent 2 Pile 1****Reinforced Concrete Column**

Element Number	Element Name	Total Qty	CS1 Qty	CS2 Qty	CS3 Qty	CS4 Qty
205	Reinforced Concrete Column	1	0	1	0	0 Each

Element Number	Defect Type	Defect Description	CS	CS Qty	Maint Qty
<input checked="" type="checkbox"/> 205	Cracking (RC and Other)	UP TO 0.016 INCH VERTICAL CRACKS IN VARIOUS LOCATIONS	2	1	Each

General Comments

**Bent 2 Pile 2****Reinforced Concrete Column**

Element Number	Element Name	Total Qty	CS1 Qty	CS2 Qty	CS3 Qty	CS4 Qty
205	Reinforced Concrete Column	1	0	1	0	0 Each

Element Number	Defect Type	Defect Description	CS	CS Qty	Maint Qty
<input checked="" type="checkbox"/> 205	Cracking (RC and Other)	(2) UP TO 7 FEET X 0.016 INCHES VERTICAL CRACKS AT RANDOM THROUGHOUT.	2	1	Each

General Comments

**Bent 2 Pile 3****Reinforced Concrete Column**

Element Number	Element Name	Total Qty	CS1 Qty	CS2 Qty	CS3 Qty	CS4 Qty
205	Reinforced Concrete Column	1	0	0	1	0 Each

Element Number	Defect Type	Defect Description	CS	CS Qty	Maint Qty
<input checked="" type="checkbox"/> 205	Cracking (RC and Other)	(4) UP TO 9 FEET X 1/16 INCHES VERTICAL CRACKS AT RANDOM THROUGHOUT.	3		15 Each
<input checked="" type="checkbox"/> 205	Efflorescence/Rust Staining	UP TO 0.02 INCH VERTICAL CRACK WITH EFFLORESCENCE BUILD UP AND 96 INCH X 12 INCH AREA OF DELAMINATION IN WEST FACE	3	1	10 Each
<input checked="" type="checkbox"/> 205	Cracking (RC and Other)	(5) UP TO 1 FEET X 0.016 INCHES DIAGONAL CRACKS AT RANDOM THROUGHOUT NORTH FACE.	2		Each
<input checked="" type="checkbox"/> 205	Delamination/Spall	2 INCHES DIAMETER X 1/2 INCHES DEEP SPALL NORTH FACE 5 FEET FROM BOTTOM OF CAP.	2		1 Each

General Comments

**End Bent 2 Cap 1****Reinforced Concrete Pier Cap**

Element Number	Element Name	Total Qty	CS1 Qty	CS2 Qty	CS3 Qty	CS4 Qty
234	Reinforced Concrete Pier Cap	40	20	0	20	0 Feet

Element Number	Defect Type	Defect Description	CS	CS Qty	Maint Qty
----------------	-------------	--------------------	----	--------	-----------

Structure Number: **750171**

Inspection Date: **07/12/2023**

**234** Delamination/Spall UP TO 1/4 INCH LONGITUDINAL AND HORIZONTAL CRACKS AND AREA OF DELAMINATION UP TO 20 FOOT LONG X 5 INCH HIGH X 5 INCH WIDE IN TOP AND FACE OF CAP FROM BAY 1 TO BEAM 3 3 20 20 Feet

---

**General Comments**

**End Bent 2 Abutment**

**Reinforced Concrete Abutment**

Element Number	Element Name	Total Qty	CS1 Qty	CS2 Qty	CS3 Qty	CS4 Qty
215	Reinforced Concrete Abutment	40	7	33	0	0 Feet

---

Element Number	Defect Type	Defect Description	CS	CS Qty	Maint Qty
<input checked="" type="checkbox"/> <b>215</b>	Cracking (RC and Other)	UP TO 0.012 INCH HORIZONTAL CRACKS IN FACE OF BACKWALL IN VARIOUS LOCATIONS	2	33	Feet

---

**General Comments**



## Elements Verified

Location	Name	Component	Element Name	Amount
Span 1	Deck	Reinforced Concrete Deck	Reinforced Concrete Deck	2220
Span 1	Beam 1	Plate Girder	Steel Open Girder/Beam	67
Span 1	Beam 2	Plate Girder	Steel Open Girder/Beam	67
Span 1	Beam 3	Plate Girder	Steel Open Girder/Beam	67
Span 1	Beam 4	Plate Girder	Steel Open Girder/Beam	67
Span 1	Left Bridge Rail	Concrete Railing	Reinforced Concrete Bridge Railing	69
Span 1	Right Bridge Rail	Concrete Railing	Reinforced Concrete Bridge Railing	69
Span 1	Wearing Surface	Asphalt Wearing Surface	Wearing Surface	1807
Span 1	Near Bearing	Other Bearing	Other Bearings	1
Span 1	Far Bearing	Other Bearing	Other Bearings	1
Span 1	Far Bearing	Other Bearing	Other Bearings	1
Span 1	Near Bearing	Other Bearing	Other Bearings	1
Span 1	Near Bearing	Other Bearing	Other Bearings	1
Span 1	Far Bearing	Other Bearing	Other Bearings	1
Span 1	Far Bearing	Other Bearing	Other Bearings	1
Span 1	Near Bearing	Other Bearing	Other Bearings	1
Span 1	Delineator SW	Delineator	Warning Signs	1
Span 1	Delineator SE	Delineator	Warning Signs	1
Span 2	Deck	Reinforced Concrete Deck	Reinforced Concrete Deck	2161
Span 2	Beam 1	Plate Girder	Steel Open Girder/Beam	67
Span 2	Beam 2	Plate Girder	Steel Open Girder/Beam	67
Span 2	Beam 3	Plate Girder	Steel Open Girder/Beam	67
Span 2	Beam 4	Plate Girder	Steel Open Girder/Beam	67
Span 2	Left Bridge Rail	Concrete Railing	Reinforced Concrete Bridge Railing	67
Span 2	Right Bridge Rail	Concrete Railing	Reinforced Concrete Bridge Railing	67
Span 2	Wearing Surface	Asphalt Wearing Surface	Wearing Surface	1759
Span 2	Near Bearing	Other Bearing	Other Bearings	1
Span 2	Far Bearing	Other Bearing	Other Bearings	1
Span 2	Far Bearing	Other Bearing	Other Bearings	1
Span 2	Near Bearing	Other Bearing	Other Bearings	1
Span 2	Near Bearing	Other Bearing	Other Bearings	1
Span 2	Far Bearing	Other Bearing	Other Bearings	1
Span 2	Far Bearing	Other Bearing	Other Bearings	1
Span 2	Near Bearing	Other Bearing	Other Bearings	1
Span 2	Clearance 0.5 Mile S	Other warning sign	Other Warning Signs	1
Span 2	Clearance Overhead S	Other warning sign	Other Warning Signs	1
Span 2	Clearance SW	Other warning sign	Other Warning Signs	1
Span 2	Clearance NE	Other warning sign	Other Warning Signs	1
Span 2	Clearance Overhead N	Other warning sign	Other Warning Signs	1
Span 2	Clearance 0.5 Mile N	Other warning sign	Other Warning Signs	1
Span 3	Deck	Reinforced Concrete Deck	Reinforced Concrete Deck	1790
Span 3	Beam 1	Plate Girder	Steel Open Girder/Beam	54
Span 3	Beam 2	Plate Girder	Steel Open Girder/Beam	54
Span 3	Beam 3	Plate Girder	Steel Open Girder/Beam	54
Span 3	Beam 4	Plate Girder	Steel Open Girder/Beam	54

## Elements Verified

Location	Name	Component	Element Name	Amount
Span 3	Left Bridge Rail	Concrete Railing	Reinforced Concrete Bridge Railing	56
Span 3	Right Bridge Rail	Concrete Railing	Reinforced Concrete Bridge Railing	56
Span 3	Wearing Surface	Asphalt Wearing Surface	Wearing Surface	1457
Span 3	Near Bearing	Other Bearing	Other Bearings	1
Span 3	Far Bearing	Other Bearing	Other Bearings	1
Span 3	Far Bearing	Other Bearing	Other Bearings	1
Span 3	Near Bearing	Other Bearing	Other Bearings	1
Span 3	Near Bearing	Other Bearing	Other Bearings	1
Span 3	Far Bearing	Other Bearing	Other Bearings	1
Span 3	Far Bearing	Other Bearing	Other Bearings	1
Span 3	Near Bearing	Other Bearing	Other Bearings	1
Span 3	Delineator NW	Delineator	Warning Signs	1
Span 3	Delineator NE	Delineator	Warning Signs	1
Bent 1	Cap 1	Reinforced Concrete Pier Cap	Reinforced Concrete Pier Cap	40
Bent 1	Pile 1	Reinforced Concrete Column	Reinforced Concrete Column	1
Bent 1	Pile 2	Reinforced Concrete Column	Reinforced Concrete Column	1
Bent 1	Pile 3	Reinforced Concrete Column	Reinforced Concrete Column	1
End Bent 1	Cap 1	Reinforced Concrete Pier Cap	Reinforced Concrete Pier Cap	52
End Bent 1	Abutment	Reinforced Concrete Abutment	Reinforced Concrete Abutment	52
Bent 2	Cap 1	Reinforced Concrete Pier Cap	Reinforced Concrete Pier Cap	40
Bent 2	Pile 1	Reinforced Concrete Column	Reinforced Concrete Column	1
Bent 2	Pile 2	Reinforced Concrete Column	Reinforced Concrete Column	1
Bent 2	Pile 3	Reinforced Concrete Column	Reinforced Concrete Column	1
End Bent 2	Cap 1	Reinforced Concrete Pier Cap	Reinforced Concrete Pier Cap	40
End Bent 2	Abutment	Reinforced Concrete Abutment	Reinforced Concrete Abutment	40

# General Inspection Notes

# National Bridge and NC Inspection Items

Structure Number: 750171

Inspection Date: 07/12/2023

## National Bridge Inventory Items

Item	Grade Scale	Grade
Item 58: Deck	0 - 9 , N	6
Item 59: Superstructure	0 - 9 , N	5
Item 60: Substructure	0 - 9 , N	5
Item 61: Channel and Channel Protection	0 - 9 , N	N
Item 62: Culvert	0 - 9 , N	N
Item 71: Waterway Adequacy	0 - 9 , N	N
Item 72: Approach Roadway Alignment	0 - 9 , N	8

**Note:**  
Items 58,59,60,62 reflect this inspection only.  
  
For overall NBI coding grade, see cover sheet.

Note: If NBI Inspection Item is not present, code NBI item with "N"

## NC SMU Inspection Items

Item	Grade Scale	Grade	Maint. Qty.	Maint. Code
Deck Debris	G, F, P, or C	F	5023	3376
Drainage System	G, F, P, or C	G	0	3332
Utilities	G, F, P, or C			
Slope Protection	G, F, P, or C		0	3352
Scour	G, F, P, or C			
Wingwall	G, F, P, or C	F	44	3350
Field Scour Evaluation		N		
Drift	G, F, P, or C		0	3366
Fender System	G, F, P, or C		0	3364
Movable Span Machinery	G, F, P, or C			
Response to Live Load	G, F, P, or C	G		
Superstructure Paint Code		A		

Note: If NC SMU Inspection Item is not present, leave NC SMU item blank

## Inspection Information

Item	Grade Scale	Grade
Sign Noticed Issued	YES/NO	N
Priority Maintenance Request Submitted	YES/NO	Y
Inspection Time	Hours	10
Traffic Control Time	Hours	
Snooper Time	Hours	
Ladder Used	YES/NO	Y
Bucket Truck Used	YES/NO	N
Boat Used	YES/NO	N
Other Equipment Used	YES/NO	N
Portion of Structure in > 3' of water	YES/NO	N

# National Bridge and NC SMU Inspection Item Details

Structure Number: 750171

Inspection Date: 07/12/2023

---

<b>Item</b>	Priority Maintenance Issued	<b>Grade</b>	Y	<b>Maint Code</b>		<b>Qty.</b>	0
-------------	-----------------------------	--------------	---	-------------------	--	-------------	---

**Details** SPAN 1 BEAM 1  
SPAN 1 BEAM 2  
SPAN 1 BEAM 3  
SPAN 1 BEAM 4  
  
SPAN 2 BEAM 1 (x2)  
SPAN 2 BEAM 3  
SPAN 2 BEAM 4  
  
SPAN 3 BEAM 1  
SPAN 3 BEAM 3  
SPAN 3 BEAM 4  
  
SPAN 2 WEARING SURFACE  
SPAN 3 WEARING SURFACE

---

<b>Item</b>	Deck Debris	<b>Grade</b>	F	<b>Maint Code</b>	3376	<b>Qty.</b>	5023
-------------	-------------	--------------	---	-------------------	------	-------------	------

**Details** DIRT AND DEBRIS ACCUMULATION WITH VEGETATION GROWTH ALONG BOTH SHOULDERS

---

<b>Item</b>	Wingwalls	<b>Grade</b>	F	<b>Maint Code</b>	3350	<b>Qty.</b>	44
-------------	-----------	--------------	---	-------------------	------	-------------	----

**Details** NORTHWEST WINGWALL COVERED IN VEGETATION OVERGROWTH, OTHERS SIMILAR



End Bent 1 Abutment: UP TO 1/16 INCH VERTICAL CRACKS IN FACE OF BACKWALL IN VARIOUS LOCATIONS



End Bent 1 Abutment: UP TO 0.012 INCH DIAGONAL CRACKS WITH EFFLORESCENCE IN FACE OF BACKWALL BENEATH WEST OVERHANG



Span 1 Deck: 34 INCH LONG X 7 INCH WIDE X 4 INCH HIGH SPALL WITH EXPOSED REBAR IN BOTTOM AND WEST FACE OF DECK AT END BENT 1



Span 1 Beam 1: PAR: CORROSION ALONG WEB AND BOTTOM FLANGE UP TO 24 INCH LONG X 8 INCH HIGH WITH UP TO 1/16 INCH DEEP PAINTED OVER PITTING IN WEB AND 24 INCH LONG X 6 INCH WIDE DOWN TO 3/8 INCH RESIDUAL BOTTOM FLANGE ON LEFT SIDE EXTENDING FROM END BENT 1





Span 1 Beam 2: PAR: CORROSION ALONG WEB AND BOTTOM FLANGE UP TO 46 INCH LONG X 5 INCH HIGH WITH NO MEASURABLE LOSS OF SECTION IN WEB AND 46 INCH LONG X 6 INCH WIDE DOWN TO 3/8 INCH RESIDUAL BOTTOM FLANGE EXTENDING FROM END BENT 1



Span 1 Beam 3: PAR: CORROSION ALONG WEB AND BOTTOM FLANGE UP TO 50 INCH LONG X 13 INCH HIGH WITH UP TO 1/16 INCH DEEP PAINTED OVER PITTING IN WEB AND 50 INCH LONG X 6 INCH WIDE DOWN TO 1/2 INCH RESIDUAL BOTTOM FLANGE EXTENDING FROM END BENT 1



Span 1 Beam 4: PAR: CORROSION ALONG WEB AND BOTTOM FLANGE UP TO 58 INCH LONG X 12 INCH HIGH  
DOWN TO 3/8 INCH RESIDUAL WEB AND 58 INCH LONG X 6 INCH WIDE DOWN TO 5/16 INCH RESIDUAL  
BOTTOM FLANGE EXTENDING FROM END BENT 1



Span 1 Deck: TWO (2) SPALLS WITH EXPOSED REBAR UP TO 11 FOOT LONG X 6 INCH HIGH X 6 INCH WIDE IN END DIAPHRAGMS BETWEEN BEAMS 2 AND 3 AND BEAMS 3 AND 4 AT END BENT 1



Span 1 Beam 4 - Near Bearing: CORROSION THROUGHOUT



Span 1 Wearing Surface: UP TO 3/4 INCH WIDE TRANSVERSE CRACK ALONG END BENT 1 FILL FACE



Span 1 Wearing Surface: UP TO 1/16 INCH MAP CRACKING IN VARIOUS LOCATIONS



Span 1 Left Bridge Rail: 14 INCH X 12 INCH AREA OF DELAMINATION WITH UP TO 12 INCH X 5 INCH X 2 INCH DEEP SPALL IN FACE OF LEFT RAIL AT END BENT 1



Span 1 Left Bridge Rail: (15) UP TO 3 INCHES X 25 INCHES X 2 INCHES SPALLS WITH EXPOSED REINFORCING AT RANDOM THROUGHOUT RAIL POSTS.



Span 1 Left Bridge Rail: WORN CONCRETE WITH EXPOSED AGGREGATE THROUGHOUT RAIL AND TOP OF CURB



Span 1 Right Bridge Rail: 9 INCHES X 4 INCHES X 2 INCHES DEEP SPALL ON BOTTOM OUTSIDE FACE OF RAIL NEAR MID SPAN



Span 2 Wearing Surface: PAR: UP TO 1/2 INCH WIDE TRANSVERSE CRACKS ALONG BENT 1 WITH (4) SPALLS UP TO 60 INCH X 6 INCH X FULL DEPTH



Span 2 Wearing Surface: PAR: UP TO 1/2 INCH WIDE TRANSVERSE CRACKS ALONG BENT 1 WITH (4) SPALLS UP TO 60 INCH X 6 INCH X FULL DEPTH

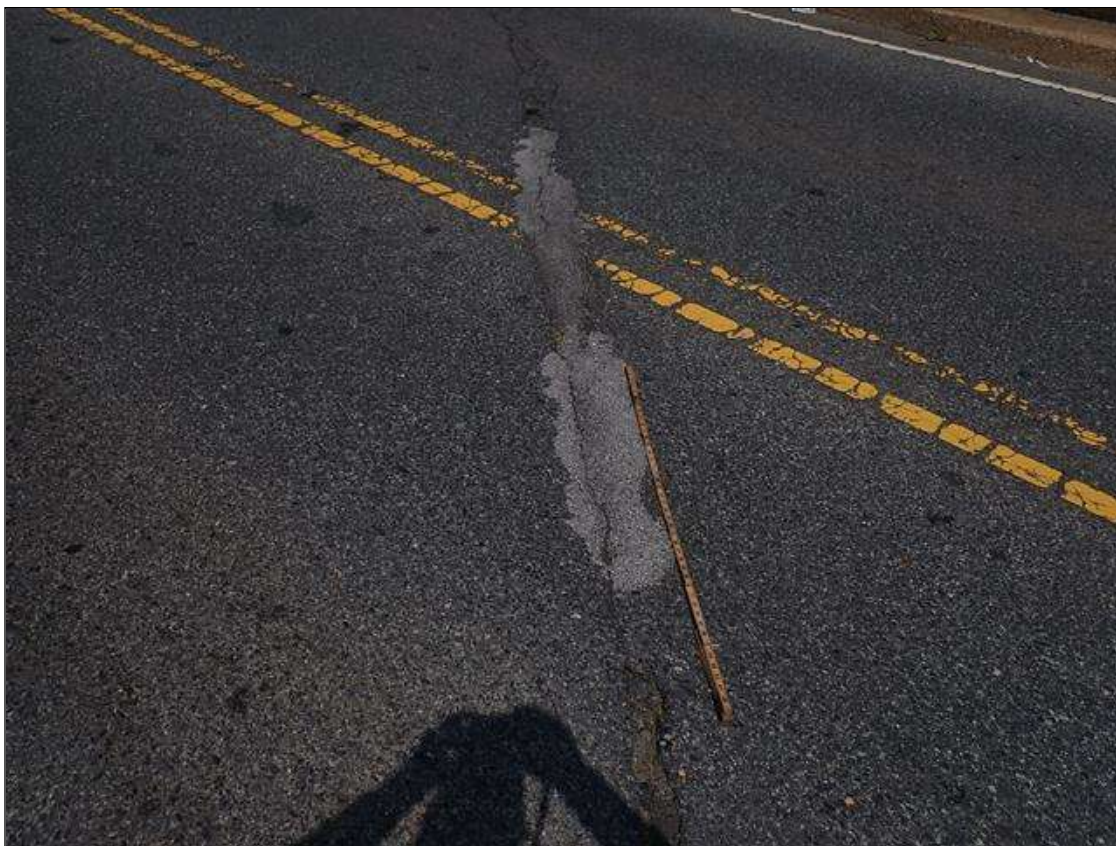




Span 2 Wearing Surface: UP TO 0.016 INCH LONGITUDINAL CRACKS IN VARIOUS LOCATIONS



DIRT AND DEBRIS ACCUMULATION WITH VEGETATION GROWTH ALONG BOTH SHOULDERS



Span 3 Wearing Surface: PRIORITY MAINTENANCE REPAIR, UP TO 108 INCH X 8 INCH AT CENTERLINE ALONG BENT 2



Span 3 Wearing Surface: UP TO 1/2 INCH TRANSVERSE CRACKS AND 96 INCH X 8 INCH AREA OF ALLIGATOR CRACKS ALONG BENT 2



Span 3 Wearing Surface: PAR: UP TO 1/2 INCH WIDE TRANSVERSE CRACKS ALONG END BENT 2 WITH (4) SPALLS UP TO 38 INCH X 5 INCH X FULL DEPTH



Span 3 Wearing Surface: PAR: UP TO 1/2 INCH WIDE TRANSVERSE CRACKS ALONG END BENT 2 WITH (4) SPALLS UP TO 38 INCH X 5 INCH X FULL DEPTH



Span 3 Right Bridge Rail: 2 INCHES X 10 INCHES DELAMINATION NORTH FACE RAIL POST 12 FEET FROM BENT 2.



Span 3 Right Bridge Rail: UP TO 0.016 INCH TRANSVERSE AND VERTICAL CRACKS IN TOP AND BOTH FACES OF RAIL IN VARIOUS LOCATIONS



NORTHWEST WINGWALL COVERED IN VEGETATION OVERGROWTH, OTHERS SIMILAR



End Bent 2 Cap 1: UP TO 1/4 INCH LONGITUDINAL AND HORIZONTAL CRACKS AND AREA OF DELAMINATION UP TO 20 FOOT LONG X 5 INCH HIGH X 5 INCH WIDE IN TOP AND FACE OF CAP FROM BAY 1 TO BEAM 3



End Bent 2 Abutment: UP TO 0.012 INCH HORIZONTAL CRACKS IN FACE OF BACKWALL IN VARIOUS LOCATIONS



Span 3 Deck: UP TO 0.016 INCH TRANSVERSE CRACKS IN BOTTOM OF DECK IN VARIOUS LOCATIONS



Span 3 Deck: 15 INCHES X 9 INCHES X 4 INCHES DEEP SPALL WITH EXPOSED REBAR AT BENT 2 UNDER EAST OVERHANG.



Bent 1 Pile 2: 21 INCHES X 14 INCHES X 6 INCHES SPALL IN NORTHEAST CORNER, APPROXIMATELY 7 FEET FROM BOTTOM OF CAP



Bent 1 Pile 2: 35 INCH X 15 INCH X 4 INCH SPALL IN NORTHWEST CORNER OF PILE, APPROXIMATELY 6 FOOT FROM BOTTOM OF CAP



Bent 1 Pile 3: (2) UP TO 10 INCHES X 7 INCHES X 2 INCHES SPALLS WITH UP TO 24 INCHES X 4 INCHES AREA OF DELAMINATION ALONG NORTH CORNERS





Bent 2 Pile 1: UP TO 0.016 INCH VERTICAL CRACKS IN VARIOUS LOCATIONS



Bent 2 Pile 3: UP TO 0.02 INCH VERTICAL CRACK WITH EFFLORESCENCE BUILD UP AND 96 INCH X 12 INCH AREA OF DELAMINATION IN WEST FACE



Bent 2 Pile 3: (5) UP TO 1 FEET X 0.016 INCHES DIAGONAL CRACKS AT RANDOM THROUGHOUT NORTH FACE.



Bent 2 Pile 3: 2 INCHES DIAMETER X 1/2 INCHES DEEP SPALL NORTH FACE 5 FEET FROM BOTTOM OF CAP.



Bent 2 Pile 3: (4) UP TO 9 FEET X 1/16 INCHES VERTICAL CRACKS AT RANDOM THROUGHOUT.



Span 2 Beam 4: IMPACT 9 FEET LONG X UP TO 2 INCHES VERTICAL DISTORTION AND APPROXIMATELY 3 INCHES LATERAL DISTORTION TO BOTTOM FLANGE. NO PAR ISSUED DUE TO LATERAL BRACING ADDED BETWEEN BEAMS PRIOR TO 2021 INSPECTION



Span 2 Beam 4: RIVETS HAVE BEEN REPLACED WITH BOLTS TO REPAIR PREVIOUS PAR-- (5) MISSING BOLTS IN COVER PLATE CONNECTION AT MID SPAN. PRIOR TO 2021 INSPECTION



Span 2 Beam 3: MISSING RIVET REPLACED WITH BOLT TO FIX PREVIOUS PAR-- (1) MISSING BOLT IN COVER PLATE CONNECTION 19 FEET FROM BENT 2. PRIOR TO 2021 INSPECTION



Span 2 Beam 2: 30 INCH LONG X UP TO 1.5 INCHES DISTORTION TO BOTTOM FLANGE 19.5 FEET FROM BENT  
2.



Span 1 Beam 1: PAR: PAINTED OVER AND ARRESTED CORROSION ALONG WEB AND BOTTOM FLANGE UP TO 96 INCH LONG X 8 INCH HIGH DOWN TO 7/16 INCH RESIDUAL WEB AND 96 INCH LONG X 12 INCH WIDE DOWN TO 1/2 INCH RESIDUAL BOTTOM FLANGE, BEGINNING APPROXIMATELY 5 FOOT FROM BENT 1



Span 2 Beam 1: PAR: CORROSION ALONG WEB AND BOTTOM FLANGE UP TO 69 INCH LONG X 12 INCH HIGH  
DOWN TO 1/4 INCH RESIDUAL WEB AND 69 INCH LONG X 12 INCH WIDE DOWN TO 3/8 INCH RESIDUAL  
BOTTOM FLANGE EXTENDING FROM BENT 1





Bent 1 Cap 1: 6 FEET X 12 INCHES DELAMINATION BOTTOM OF CAP BETWEEN PILES 1 AND 2.



Span 2 Beam 3: PAR: CORROSION ALONG WEB AND BOTTOM FLANGE UP TO 47 INCH LONG X 7 INCH HIGH  
DOWN TO 3/8 INCH RESIDUAL WEB AND 32 INCH LONG X 12 INCH WIDE DOWN TO 1/2 INCH RESIDUAL  
BOTTOM FLANGE EXTENDING FROM BENT 1



Span 2 Beam 4: PAR: CORROSION ALONG BOTTOM FLANGE UP TO 72 INCH LONG X 12 INCH WIDE DOWN TO 1/2 INCH RESIDUAL BOTTOM FLANGE EXTENDING FROM BENT 1



Bent 1 Cap 1: 11 INCHES X 11 INCHES X 5 INCHES SPALL NORTHEAST CORNER.



Span 2 Beam 4: 72 INCH X 12 INCH PLATE REPAIR ALONG BOTH FACES OF WEB EXTENDING FROM BENT 1



Span 1 Deck: 36 INCH X 30 INCH X 1 INCH DEEP SPALL WITH EXPOSED REBAR IN BOTTOM OF DECK IN EAST OVERHANG AT BENT 1



Span 1 Deck: 48 INCH X 30 INCH X 3 INCH SPALL WITH EXPOSED REBAR IN BOTTOM OF DECK IN WEST OVERHANG AT BENT 1.



Bent 2 Cap 1: 30 INCH X 30 INCH AREA OF HAIRLINE MAP CRACKING WITH RUST STAINING IN SOUTH FACE AT EAST END.



Bent 2 Cap 1: UP TO 0.02 INCH HORIZONTAL AND VERTICAL CRACKS IN EAST AND WEST ENDS OF CAP



Bent 2 Cap 1: UP TO 1/8 INCH LONGITUDINAL CRACKS AND 13 FOOT LONG X 26 INCH WIDE AREA OF DELAMINATION IN BOTTOM OF CAP BETWEEN COLUMNS 2 AND 3



Span 2 Beam 1: PAR: CORROSION ALONG WEB AND BOTTOM FLANGE UP TO 30 INCH LONG X 14 INCH HIGH  
DOWN TO 3/8 INCH RESIDUAL WEB AND 30 INCH LONG X 12 INCH WIDE DOWN TO 1/2 INCH RESIDUAL  
BOTTOM FLANGE EXTENDING FROM BENT 2



Span 3 Beam 1: PAR: CORROSION ALONG WEB AND BOTTOM FLANGE UP TO 96 INCH LONG X 14 INCH HIGH DOWN TO 3/8 INCH RESIDUAL WEB AND 82 INCH LONG X 12 INCH WIDE DOWN TO 5/8 INCH RESIDUAL BOTTOM FLANGE EXTENDING FROM BENT 2





Span 3 Beam 3: PAR: CORROSION ALONG WEB AND BOTTOM FLANGE UP TO 58 INCH LONG X 9 INCH HIGH  
DOWN TO 7/16 INCH RESIDUAL WEB AND 46 INCH LONG X 12 INCH WIDE DOWN TO 5/8 INCH RESIDUAL  
BOTTOM FLANGE EXTENDING FROM BENT 2



Bent 2 Cap 1: 12 INCHES X 8 INCHES AREA OF DELAMINATION IN NORTH FACE BENEATH BEAM 3.



Bent 2 Cap 1: UP TO 1/8 INCH HORIZONTAL CRACKS IN NORTH FACE OF CAP BENEATH BAYS 1 THRU 3



Span 2 Deck: (5) UP TO 48 INCH X 24 INCH X 2 INCHES DEEP SPALLS WITH EXPOSED REBAR IN BOTTOM OF DECK AND EAST OVERHANG ALONG BEAM 3 AND BEAM 4 TOP FLANGE



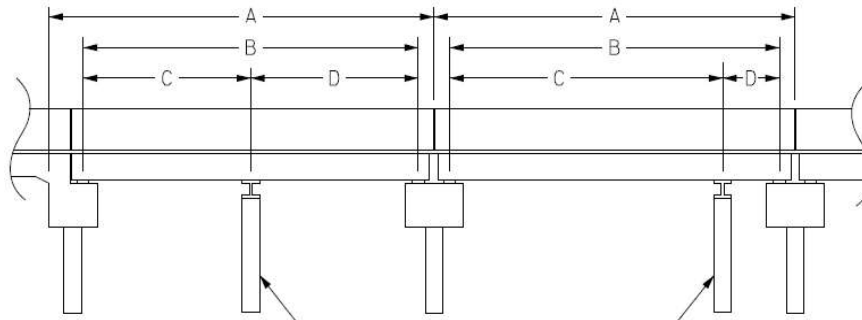
Span 3 Beam 4: PAR: CORROSION ALONG WEB AND BOTTOM FLANGE UP TO 48 INCH LONG X 12 INCH HIGH DOWN TO 7/16 INCH RESIDUAL WEB AND 34 INCH LONG X 12 INCH WIDE DOWN TO 3/8 INCH RESIDUAL BOTTOM FLANGE EXTENDING FROM BENT 2

# Structure Data Worksheet

## Span Profile

County: **RANDOLPH**

Structure Number: **750171**



A: SPAN LENGTH  
 B: BEARING TO BEARING  
 C: DISTANCE FROM NEAR BEARING  
 D: DISTANCE TO FAR BEARING

Span Number	Span Length	Bearing to Bearing	Crutch/ Helper Bent	Distance to Near Bearing	Distance to Far Bearing
1	68.833	66.000			
2	67.000	66.000			
3	55.500	52.615			

Structure Number: 750171

Span: 2

Route Name: US64E,NC49S



SPAN 2 WEST PROFILE, LOOKING EAST

<b>Route Number:</b> 21000640		<b>Route Name:</b> US64E,NC49S		<b>Reference Feature:</b> H	
<b>Minimum Vertical Clearance</b> 14.083 feet		<b>Maximum Minimum Vertical Clearance</b> 14.333 feet			
<b>Total Horizontal Clearance</b> 41.250 feet		<b>Lateral Clearances: Left:</b> 3.500 feet <b>Right</b> 9.167 feet			
<input checked="" type="checkbox"/> <b>Base Highway Network</b>		<b>LRS Inventory Route, Sub Route Number</b> 20064			
<b>Milepost:</b> 74.300	<b>Number of Lanes:</b> 2	<b>ADT:</b> 13000	<b>Year of ADT:</b> 2019	<b>Percentage of Trucks:</b> 12	
<input checked="" type="checkbox"/> <b>National Highway System</b>		<input type="checkbox"/> <b>STRAHNET Highway Designator</b>			
<b>Functional Classification</b> 14 Local Other Principal Arterial		<b>Direction of Traffic:</b> 2 2 - way traffic			

# Bridge Inspection Field Sketch



Roadway	22.00ft Wide	2 Paved Lanes	Looking North
Left Shoulder	5.50ft Wide	1.50ft Paved	4.00ft Unpaved
Right Shoulder	3.50ft Wide	1.50ft Paved	2.00ft Unpaved
Left Guardrail			
Right Guardrail			

Measurements recorded approximately 25.00ft South of End Bent 1 fill face along centerline of roadway.

Title  
APPROACH ROADWAY

Description  
LOOKING NORTH

Structure No: 750171

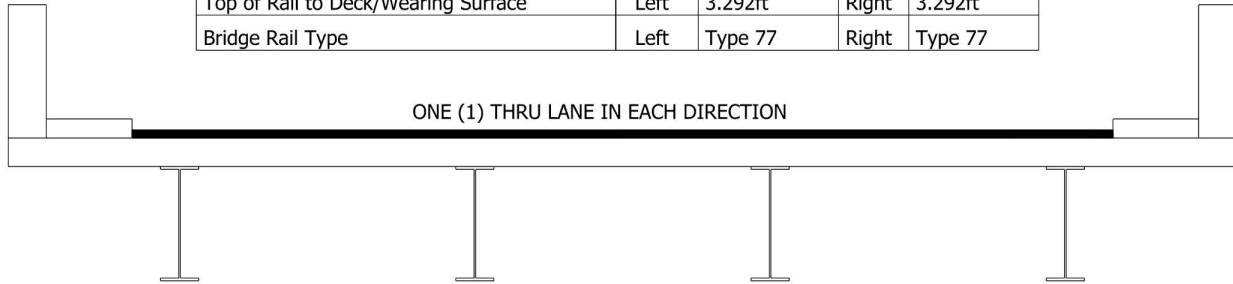
Drawn By: BKE

Date: 7/12/2023

Filename: S000690000048.wes

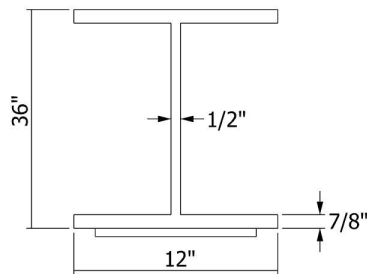
# Bridge Inspection Field Sketch

Deck Width/Out to Out	32.25ft	Between Rails	30.5ft	
Clear Roadway	26.25ft	Wearing Surface	2.50in	
Median Width		Median Height		
Curb Height		Left	6.50in	Right 6.50in
Sidewalk Width		Left	2.25ft	Right 2.25ft
Clear Roadway (Rail to Median)		Left		Right
Guardrail Width		Left	9.00in	Right 9.00in
Top of Rail to Deck/Wearing Surface		Left	3.292ft	Right 3.292ft
Bridge Rail Type		Left	Type 77	Right Type 77



Measurements for Spans	1 thru 3		
Deck Thickness	9.00in	Left Overhang	4.50ft
Top of Rail to Bottom of Beam (Avg)	7.25ft	Right Overhang	4.50ft

Beam #	Beam Type	Width	Height	Spacing	From
1	Plate Girder	12.00in	36.00in	4.50ft	Left Edge of Deck
2	Plate Girder	12.00in	36.00in	7.75ft	Beam 1
3	Plate Girder	12.00in	36.00in	7.75ft	Beam 2
4	Plate Girder	12.00in	36.00in	7.75ft	Beam 3



BEAM DETAILS  
Spans 1 thru 3  
12" Wide x 1" Thick Cover Plate  
(Span 2 Only)

Title  
TYPICAL SECTION

Description  
4 LINES OF STEEL I-BEAMS

Structure No: 750171

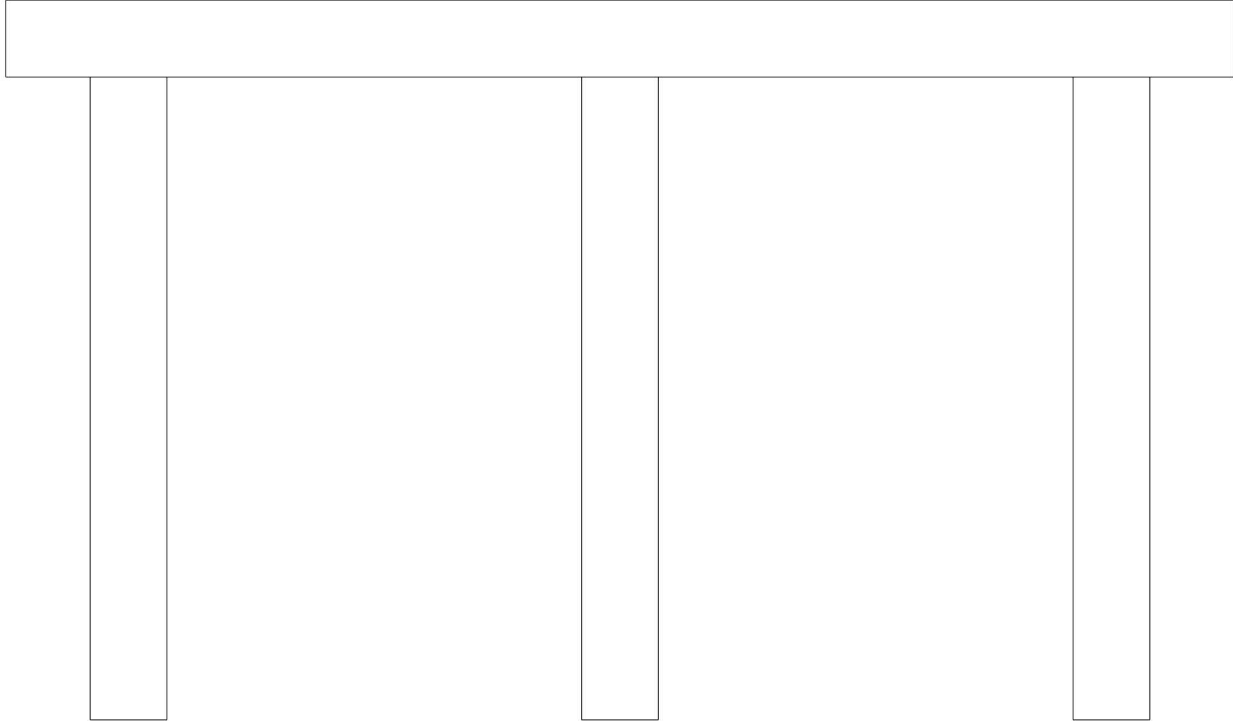
Drawn By: BKE

Date: 7/12/2023

Filename: S000690000049.wes



# Bridge Inspection Field Sketch



Caps							
#	Name	Type	Length	Width	Height	Left Beam to End of Cap	Right Beam to End of Cap
1	Cap 1	Reinforced Concrete Pier Cap	40.00ft	30.00in	30.00in	2.25ft	2.25ft

Piles							
#	Name	Type	Spacing	From	Height/Diam.	Width	Length
1	Pile 1	Reinforced Concrete Column	4.00ft	Left End of Bent	30.00in	30.00in	
2	Pile 2	Reinforced Concrete Column	16.00ft	Pile 1	30.00in	30.00in	
3	Pile 3	Reinforced Concrete Column	16.00ft	Pile 2	30.00in	30.00in	

Title BENT PROFILE		Description BENTS 1 AND 2	
Structure No: 750171	Drawn By: BKE	Date: 7/12/2023	Filename: S000690000050.wes



WEST PROFILE, LOOKING EAST



CLEARANCE SIGN, APPROXIMATELY 25 FEET WEST OF BENT 1



END BENT 1, END BENT 2 SIMILAR



SPAN 1 EAST PROFILE, LOOKING WEST



TRANSITION ALONG END BENT 1 FILL FACE, TRANSITION ALONG END BENT 2 FILL FACE SIMILAR



LOOKING NORTH



LEFT RAIL, RIGHT RAIL SIMILAR



SOUTH APPROACH



LOOKING EAST FROM SPAN 2



LOOKING WEST FROM SPAN 2



NORTH APPROACH



NORTH APPROACH, LOOKING SOUTH



BEAM 2 BEARING AT END BENT 2, OTHERS SIMILAR AT END BENTS



CLEARANCE SIGN, APPROXIMATELY 25 FEET EAST OF BENT 2





SPAN 3 EAST PROFILE, LOOKING NORTHWEST



SPAN 1 BEAM 4 BEARING AT BENT 1, OTHERS SIMILAR AT BENTS



BENT 2, BENT 1 SIMILAR



SPAN 2 UNDERDECK, OTHERS SIMILAR



SPAN 2 EAST PROFILE, LOOKING WEST



EAST PROFILE, LOOKING WEST



SPAN 2 WEST PROFILE, LOOKING EAST



CLEARANCE SIGN OVER WESTBOUND LANES, APPROXIMATELY 1000 FOOT EAST OF BRIDGE



CLEARANCE SIGN, APPROXIMATELY 0.5 MILES WEST OF BRIDGE



CLEARANCE SIGN OVER EASTBOUND LANES, APPROXIMATELY 1000 FOOT WEST OF BRIDGE



CLEARANCE SIGN, APPROXIMATELY 0.5 MILES EAST OF BRIDGE