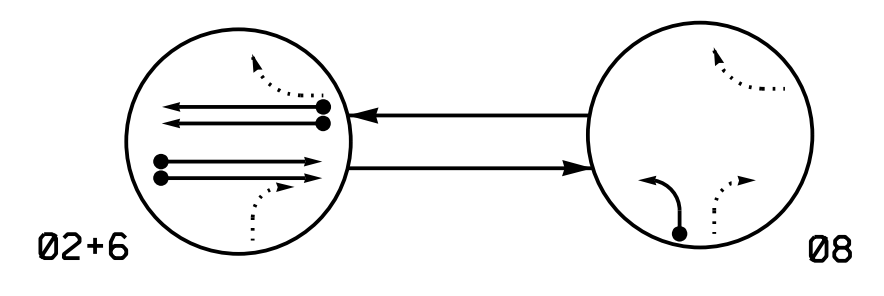


**PHASING DIAGRAM**

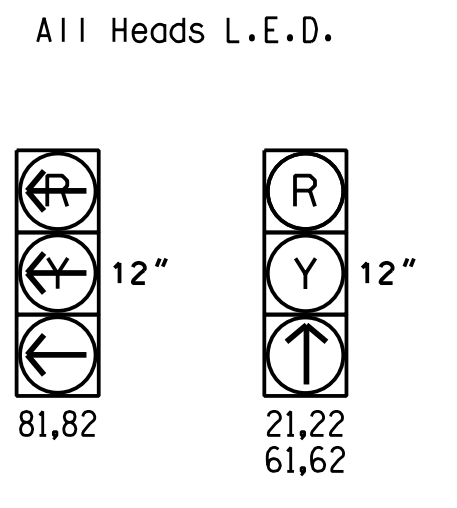


**PHASING DIAGRAM DETECTION LEGEND**

- DETECTED MOVEMENT
- UNDETECTED MOVEMENT (OVERLAP)
- UNSIGNALIZED MOVEMENT
- - - - PEDESTRIAN MOVEMENT

SIGNAL FACE	PHASE		
	02+6	08	18
21,22	↑	R	Y
61,62	↑	R	Y
81,82	↑	—	↑

**SIGNAL FACE I.D.**



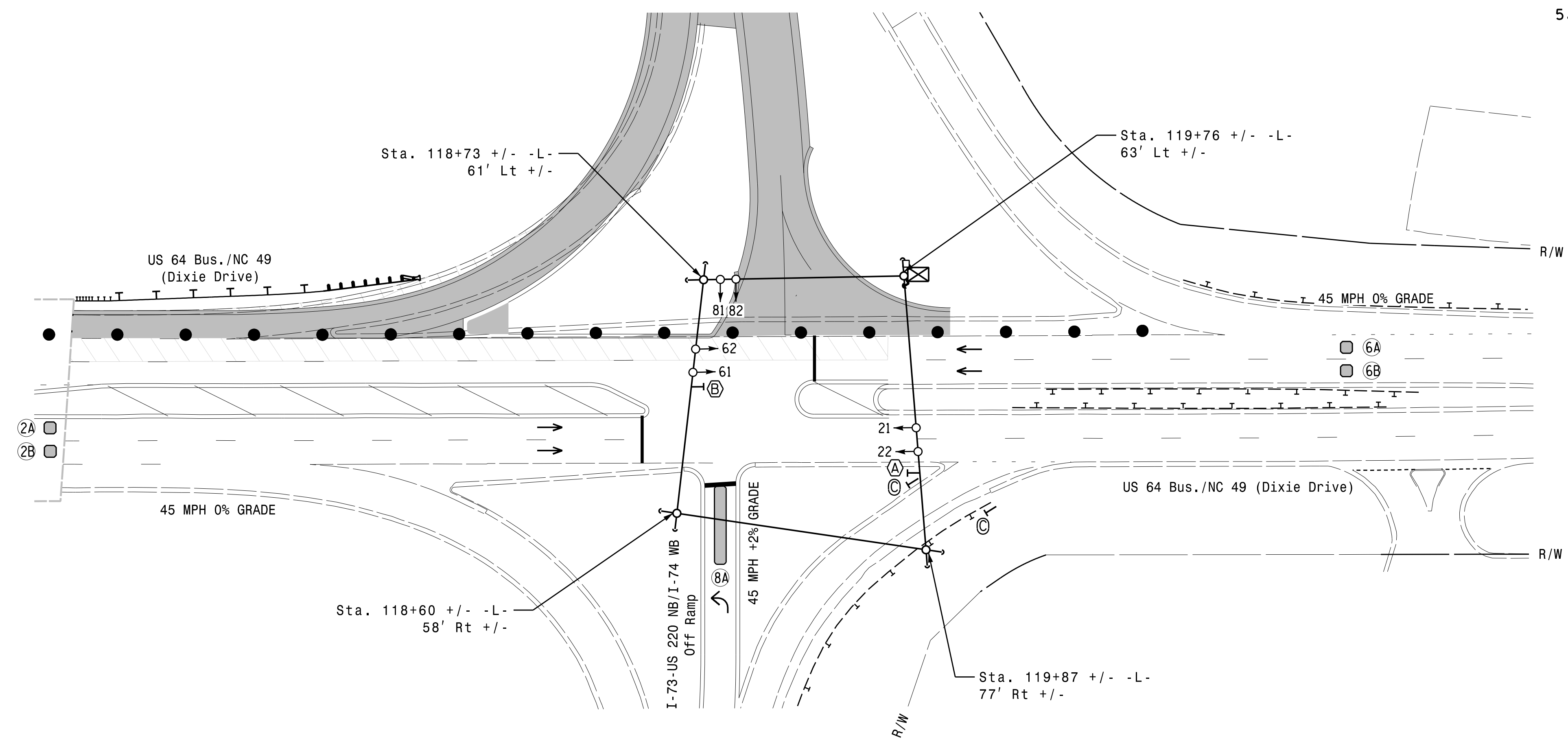
MAXTIME DETECTOR INSTALLATION CHART											
DETECTOR						PROGRAMMING					
ZONE	SIZE (FT)	DISTANCE FROM STOPBAR (FT)	TURNS	NEW LOOP	CALL PHASE	DELAY TIME	EXTEND TIME	EXTEND	ADDED INITIAL	CALL	RELAY OUTPUTS GREEN
2A*	6X6	300	*	*	2	-	-	X	X	X	*
2B*	6X6	300	*	*	2	-	-	X	X	X	*
6A*	6X6	300	*	*	6	-	-	X	X	X	*
6B*	6X6	300	*	*	6	-	-	X	X	X	*
8A*	6X40	0	*	*	8	-	-	X	X	X	*

\* Microwave Detection

2 Phase Fully Actuated (Isolated)

**NOTES**

- Refer to "Roadway Standard Drawings NCDOT" dated January 2024 and "Standard Specifications for Roads and Structures" dated January 2024.
- Do not program signal for late night flashing operation unless otherwise directed by the Engineer.
- Set all detector units to presence mode.
- Locate new cabinet so as not to obstruct sight distance of vehicles turning right on red.
- This intersection uses multi-zone microwave detection. Install detectors according to the manufacturer's instructions to achieve the desired detection.



FEATURE	PHASE		
	2	6	8
Walk *	-	-	-
Ped Clear *	-	-	-
Min Green	12	12	7
Passage *	6.0	6.0	2.0
Max I *	90	90	30
Yellow Change	4.5	4.5	3.0
Red Clear	1.0	1.4	2.4
Added Initial *	1.5	1.5	-
Maximum Initial *	34	34	-
Time Before Reduction *	15	15	-
Time To Reduce *	30	30	-
Minimum Gap	3.0	3.0	-
Advance Walk	-	-	-
Non Lock Detector	-	-	X
Vehicle Recall	MIN RECALL	MIN RECALL	-
Dual Entry	-	-	-

\* These values may be field adjusted. Do not adjust Min Green and Extension times for phases 2 and 6 lower than what is shown. Min Green for all other phases should not be lower than 4 seconds.

PROPOSED	LEGEND	EXISTING
	Traffic Signal Head	
	Modified Signal Head	N/A
	Pedestrian Signal Head	
	Signal Pole with Guy	
	Signal Pole with Sidewalk Guy	
	Inductive Loop Detector	
	Controller & Cabinet	
	Junction Box	
	2-in Underground Conduit	
N/A	Right of Way	
	Directional Arrow	
	Construction Zone	
N/A	Guardrail	
	Microwave Detection Zone	
N/A	Curb Ramp	
	Construction Zone Drums	
	Wedge/Widen	
(A)	No Right Turn Sign (R3-1)	(A)
(B)	No U-Turn/No Left Turn Sign (R3-18)	(B)
(C)	"YIELD" SIGN (R1-2)	(C)

New Installation - Temporary Design 1 (Construction Phase IIA)

**DOCUMENT NOT CONSIDERED FINAL UNLESS ALL SIGNATURES COMPLETED**

	US 64 Bus./NC 49 (Dixie Drive) at I-73-US 220 NB/I-74 WB Ramps		
	Division 8 Randolph County Asheville	PLAN DATE: August 2021 REVIEWED BY: A.D. Klinksiek	
REVISIONS:			
DocuSigned by: <i>Natasha R. Simmons</i> 5/21/2024			
SIG. INVENTORY NO. 08-0501T1			

**HNTB** HNTB NORTH CAROLINA, P.C. 343 E. Six Forks Road, Suite 200 Raleigh, North Carolina 27609 NC License No: C-1554 (919) 546-8997