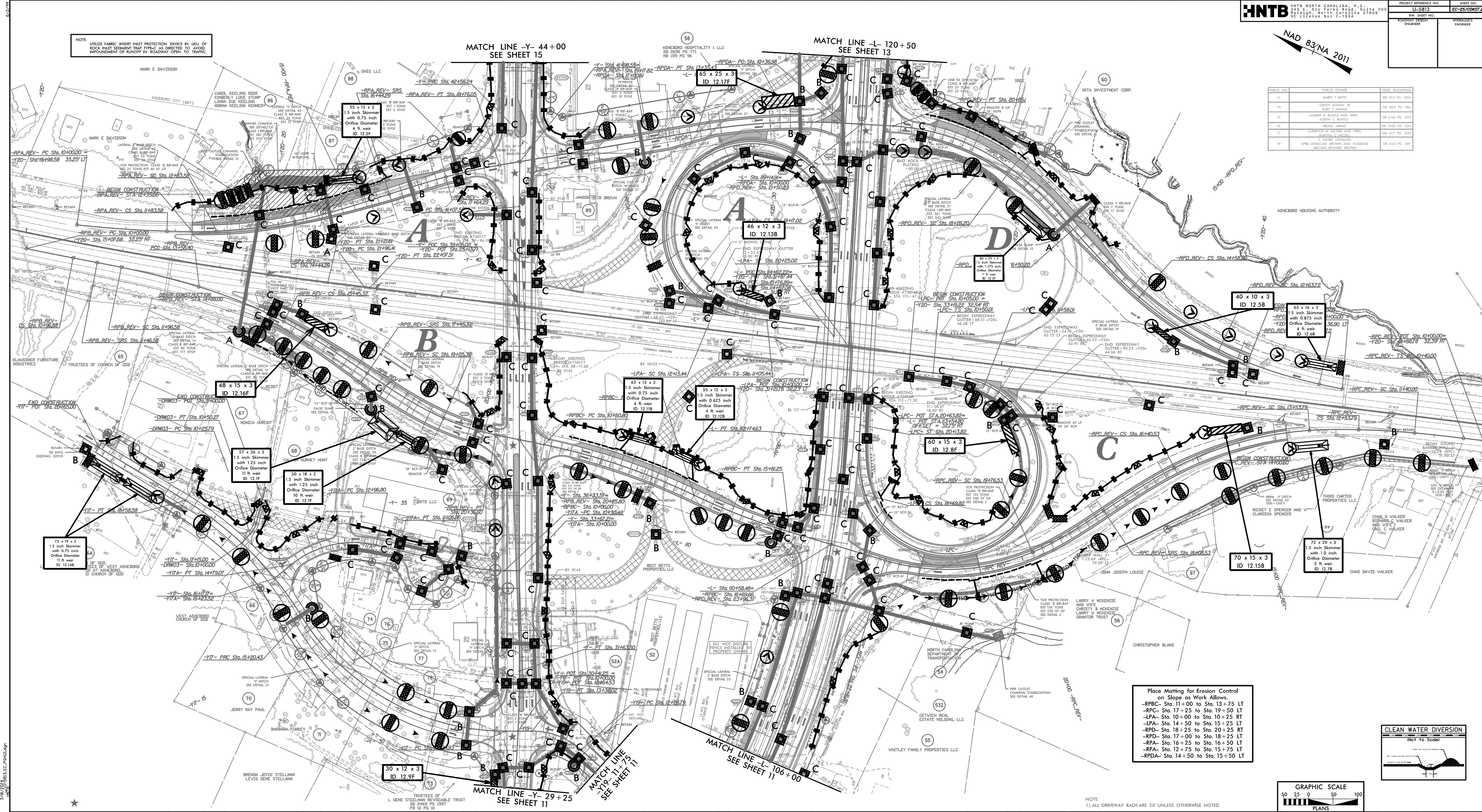


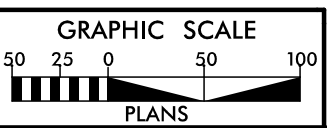
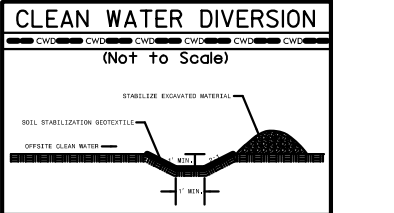
NAD 83/NA 2011

NOTE: UTILIZE FABRIC INSERT INLET PROTECTION DEVICE IN LIFT OF ROCK INLET SEDIMENT TRAP TYPE-C AS DIRECTED TO AVOID IMPROVEMENT OF RUNOFF IN ROADWAY OPEN TO TRAFFIC.



PARCEL NO.	PARCEL OWNER	DEED BOOK/PAGE
51	BARRY T BETTS	DB 2017 PG 1034
74	GRACEY HANNAH TR RUBY T ALDAM	DB 1003 PG 286
75	LANDER IN BUSTE AND WIFE JUDITH C BUSTE	DB 3164 PG 1322
76	BRIAN JARVIS	DB 2505 PG 1247
77	CLARENCE W HICKES AND WIFE MARGARET K HICKES	DB 1317 PG 1029
78	APRIL LEMMONSON C OBER LEMMONSON	DB 2441 PG 589

Place Matting for Erosion Control on Slope as Work Allows.
 -RPBC- Sta. 11+00 to Sta. 13+75 LT
 -RPC- Sta. 17+25 to Sta. 19+50 LT
 -LPA- Sta. 10+00 to Sta. 10+25 RT
 -LPA- Sta. 14+50 to Sta. 15+25 LT
 -RPD- Sta. 18+25 to Sta. 20+25 RT
 -RPD- Sta. 17+00 to Sta. 18+25 LT
 -RPA- Sta. 16+25 to Sta. 16+50 LT
 -RPA- Sta. 12+75 to Sta. 15+75 LT
 -RPDA- Sta. 14+50 to Sta. 15+50 LT



NOTE: 1) ALL DRIVEWAY RADII ARE 20' UNLESS OTHERWISE NOTED

3/16/2024 10:53 AM