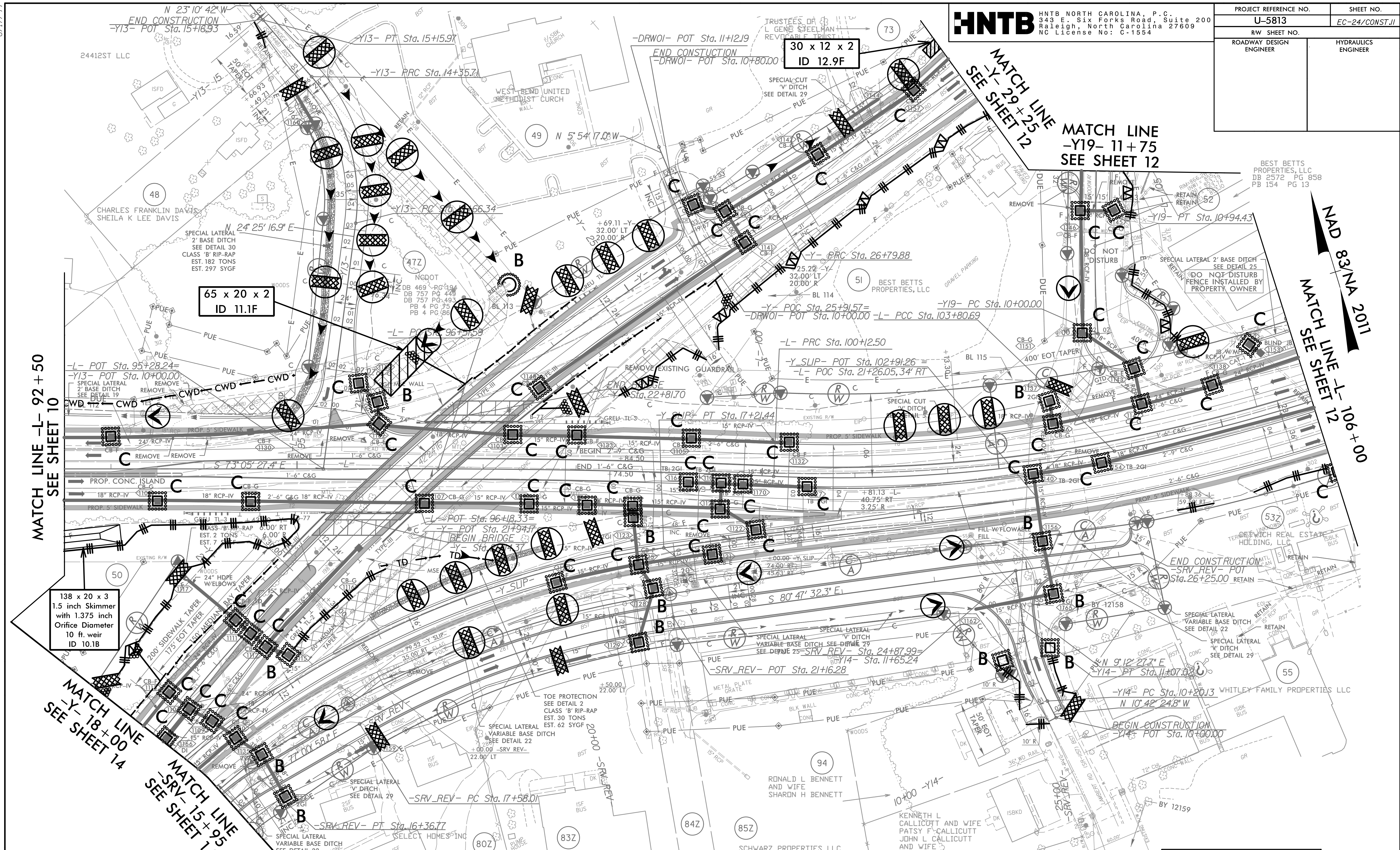


10/17/2023 EC_PSH11.dgn
 HNTB

PROJECT REFERENCE NO.	SHEET NO.
U-5813	EC-24/CONST-11
RW SHEET NO.	
ROADWAY DESIGN ENGINEER	HYDRAULICS ENGINEER



MATCH LINE -L- 92+50
 SEE SHEET 10

138 x 20 x 3
 1.5 inch Skimmer
 with 1.375 inch
 Orifice Diameter
 10 ft. weir
 ID 10.1B

65 x 20 x 2
 ID 11.1F

30 x 12 x 2
 ID 12.9F

MATCH LINE
 -Y- 29+25
 SEE SHEET 12

MATCH LINE
 -Y19- 11+75
 SEE SHEET 12

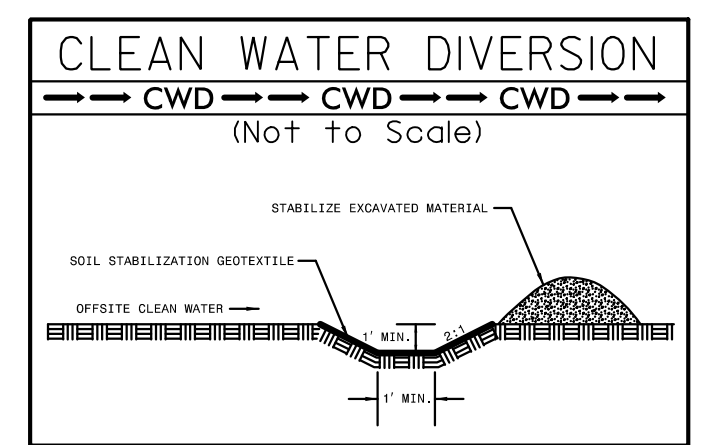
MATCH LINE
 -L- 106+00
 SEE SHEET 12

MATCH LINE
 -Y- 18+00
 SEE SHEET 14

MATCH LINE
 -SRV- 15+95
 SEE SHEET 14

**Place Matting for Erosion Control
 on Slope as Work Allows.**
 -L- Sta. 98+50 to Sta. 103+00 LT
 -Y- Sta. 24+00 to Sta. 25+50 RT
 -Y- Sta. 18+50 to Sta. 20+50 LT
 -Y- Sta. 23+00 to Sta. 24+00 LT
 -Y- Sta. 26+50 to Sta. 27+00 LT
 -Y13- Sta. 12+25 to Sta. 12+75 LT

NOTE:
 UTILIZE FABRIC INSERT INLET PROTECTION DEVICE IN LIEU OF
 ROCK INLET SEDIMENT TRAP, TYPE-C AS DIRECTED TO AVOID
 IMPOUNDMENT OF RUNOFF IN ROADWAY OPEN TO TRAFFIC.



NOTE:
 1.) ALL DRIVEWAY RADII ARE 20' UNLESS OTHERWISE NOTED