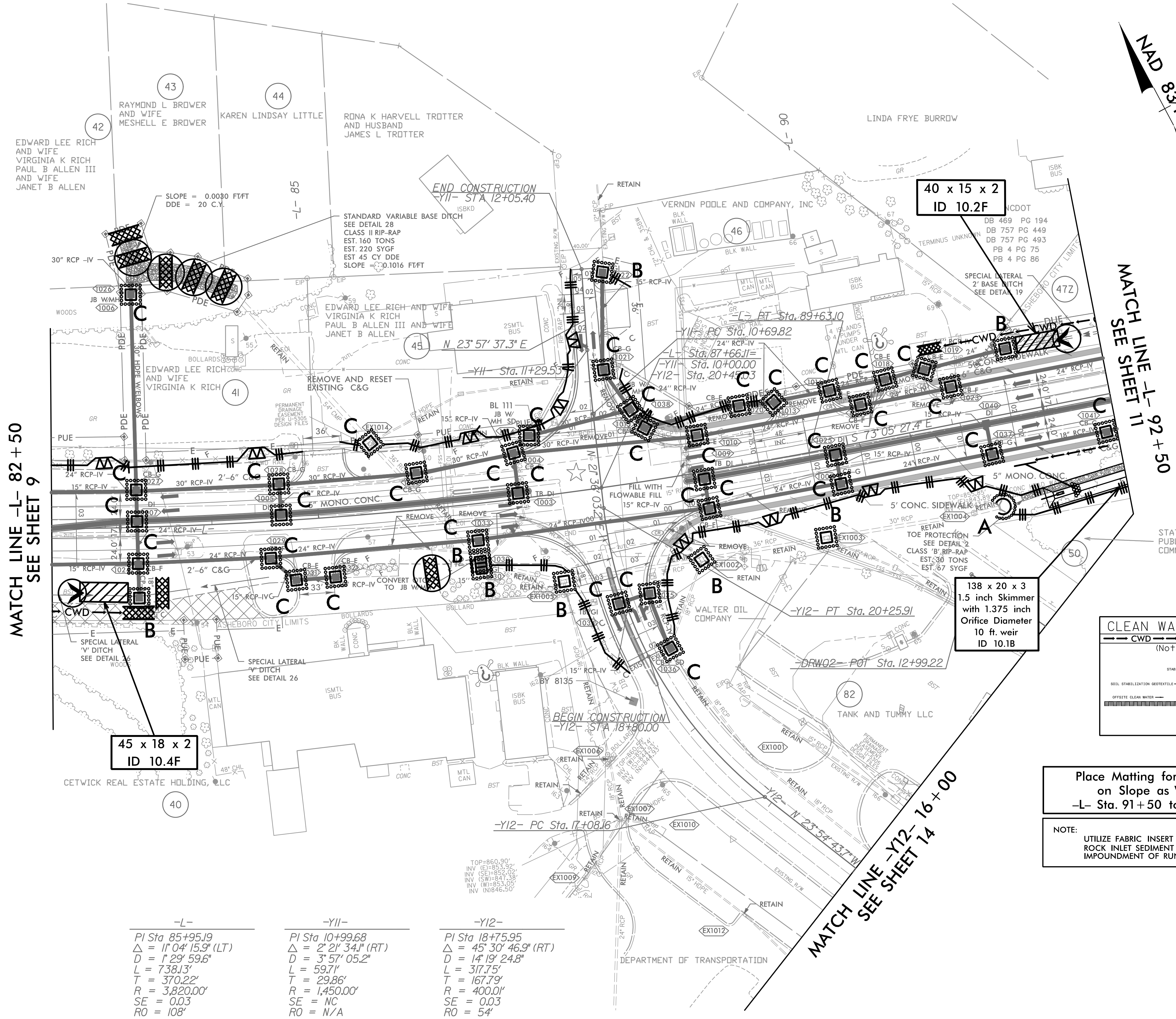
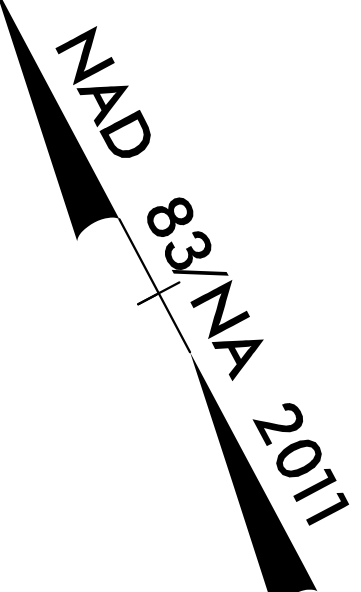


PROJECT REFERENCE NO.	SHEET NO.
U-5813	EC-23/CONST.10
RW SHEET NO.	
ROADWAY DESIGN ENGINEER	HYDRAULICS ENGINEER



MATCH LINE -L- 82 + 50  
SEE SHEET 9

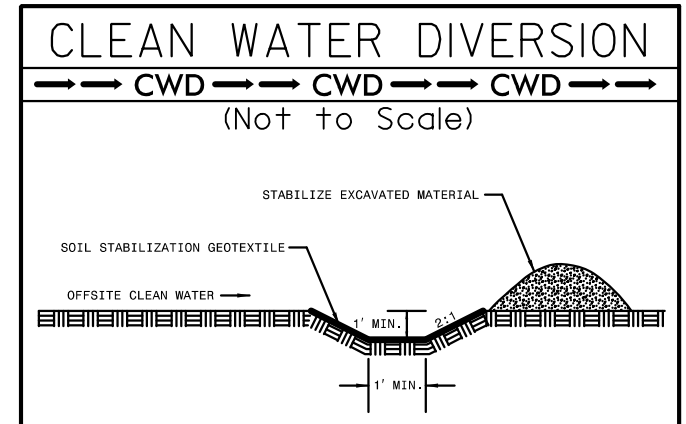
MATCH LINE -L- 92 + 50  
SEE SHEET 11

MATCH LINE -Y12- 16 + 00  
SEE SHEET 14

45 x 18 x 2  
ID 10.4F

40 x 15 x 2  
ID 10.2F

138 x 20 x 3  
1.5 inch Skimmer  
with 1.375 inch  
Orifice Diameter  
10 ft. weir  
ID 10.1B



Place Matting for Erosion Control  
on Slope as Work Allows.  
-L- Sta. 91+50 to Sta. 92+00 RT

NOTE:  
UTILIZE FABRIC INSERT INLET PROTECTION DEVICE IN LIEU OF  
ROCK INLET SEDIMENT TRAP, TYPE-C AS DIRECTED TO AVOID  
IMPONDMENT OF RUNOFF IN ROADWAY OPEN TO TRAFFIC.

-L-	-Y11-	-Y12-
PI Sta 85+95.19	PI Sta 10+99.68	PI Sta 18+75.95
$\Delta = 11' 04" 15.9" (LT)$	$\Delta = 2' 21" 34.1" (RT)$	$\Delta = 45' 30" 46.9" (RT)$
$D = 1' 29" 59.6"$	$D = 3' 57" 05.2"$	$D = 14' 19" 24.8"$
$L = 738.13'$	$L = 59.71'$	$L = 317.75'$
$T = 370.22'$	$T = 29.86'$	$T = 167.79'$
$R = 3,820.00'$	$R = 1,450.00'$	$R = 400.01'$
$SE = 0.03$	$SE = NC$	$SE = 0.03$
$RO = 108'$	$RO = N/A$	$RO = 54'$