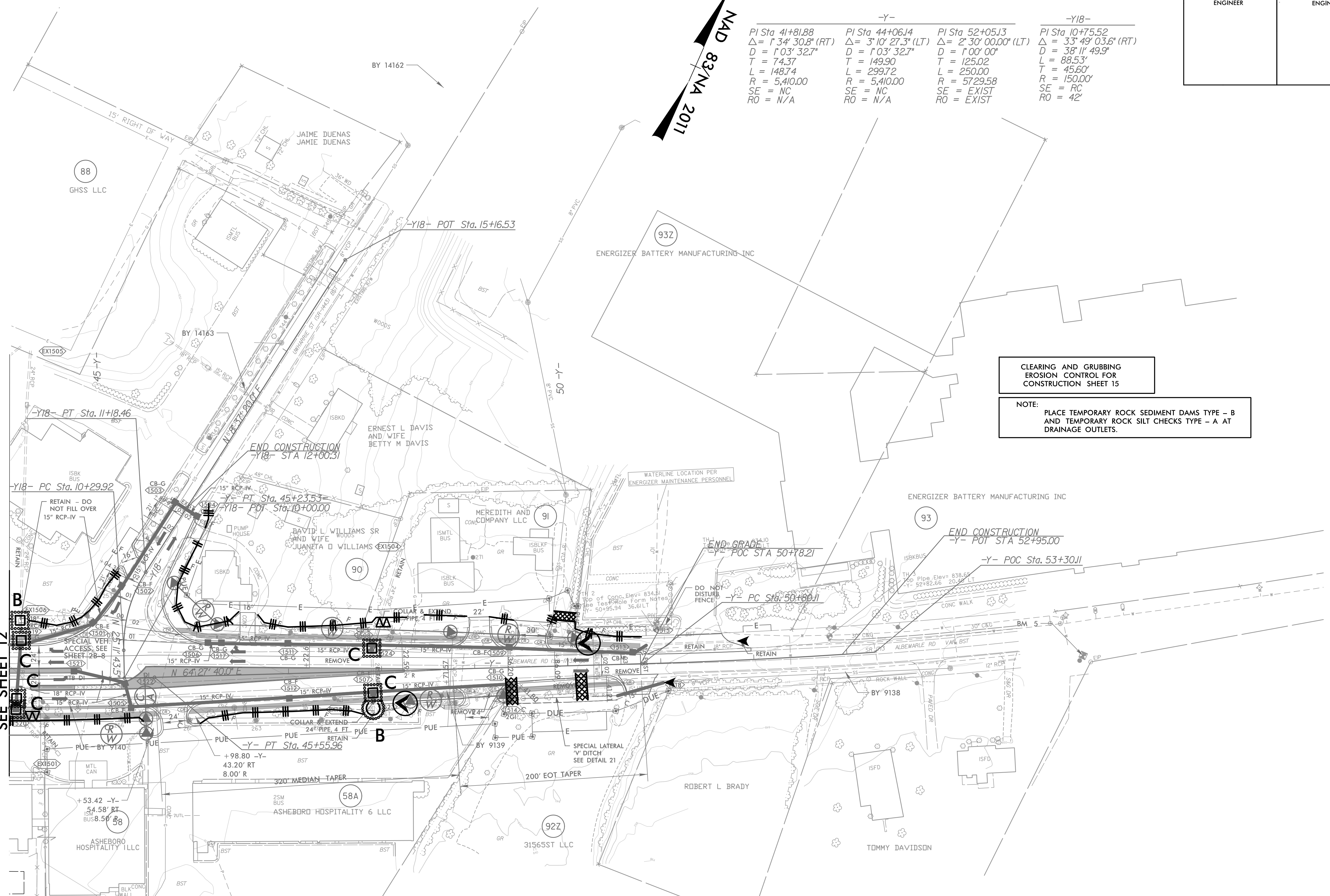


PROJECT REFERENCE NO.	SHEET NO.
U-5813	EC-15/CONST.15
RW SHEET NO.	
ROADWAY DESIGN ENGINEER	HYDRAULICS ENGINEER

NAD 83 NA 2011

-Y-	-Y-	-Y-	-Y18-
PI Sta 41+81.88	PI Sta 44+06.14	PI Sta 52+05.13	PI Sta 10+75.52
$\Delta = 1' 34' 30.8" (RT)$	$\Delta = 3' 10' 27.3" (LT)$	$\Delta = 2' 30' 00.0" (LT)$	$\Delta = 33' 49' 03.6" (RT)$
$D = 1' 03' 32.7"$	$D = 1' 03' 32.7"$	$D = 1' 00' 00"$	$D = 38' 11' 49.9"$
$T = 74.37$	$T = 149.90$	$T = 125.02$	$L = 88.53'$
$L = 148.74$	$L = 299.72$	$L = 250.00$	$T = 45.60'$
$R = 5,410.00$	$R = 5,410.00$	$R = 5729.58$	$R = 150.00'$
$SE = NC$	$SE = NC$	$SE = EXIST$	$SE = RC$
$RO = N/A$	$RO = N/A$	$RO = EXIST$	$RO = 42'$

MATCH LINE -Y- 44+00  
SEE SHEET 12



CLEARING AND GRUBBING  
EROSION CONTROL FOR  
CONSTRUCTION SHEET 15

NOTE:  
PLACE TEMPORARY ROCK SEDIMENT DAMS TYPE - B  
AND TEMPORARY ROCK SILT CHECKS TYPE - A AT  
DRAINAGE OUTLETS.

NOTE:  
1.) ALL DRIVEWAY RADII ARE 20' UNLESS OTHERWISE NOTED