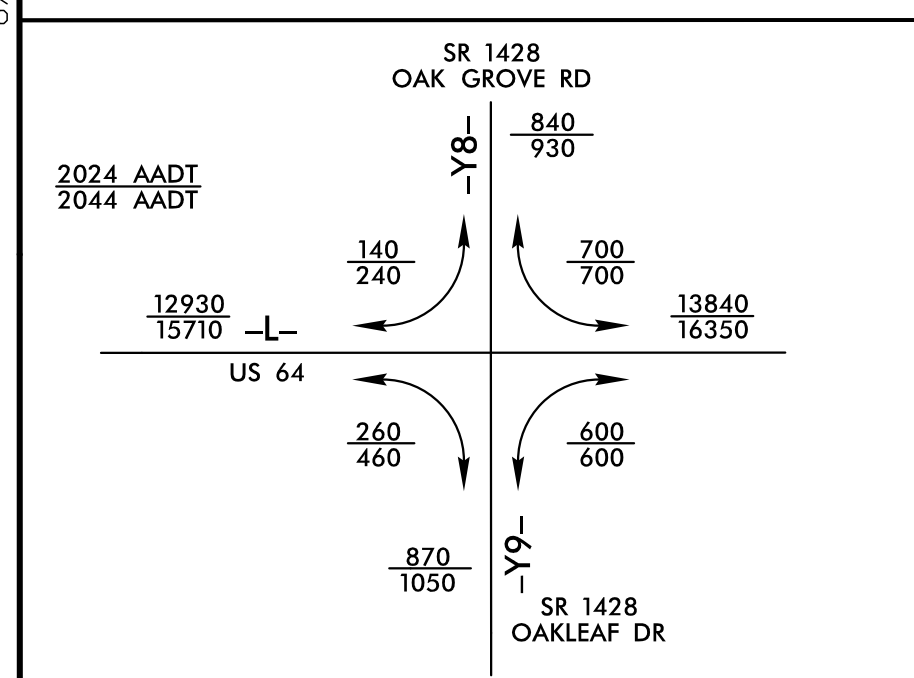


8.17.19

INTERSECTION OF -L- (US 64), -Y8- (SR 1428 - OAK GROVE RD) & -Y9- (SR 1428 - OAKLEAF DR)



PARCEL NO.	PARCEL OWNER	DEED BOOK/PAGE
33	THE JESSE TATE LEONARD FAMILY TRUST TRUSTEES PHYLIS LEONARD MARTENS JESSE TATE LEONARD	
34/34B	MCKENZIE PROPERTIES AND INVESTMENTS, LLC	
35	ANDREW MARK SCHWARZ	

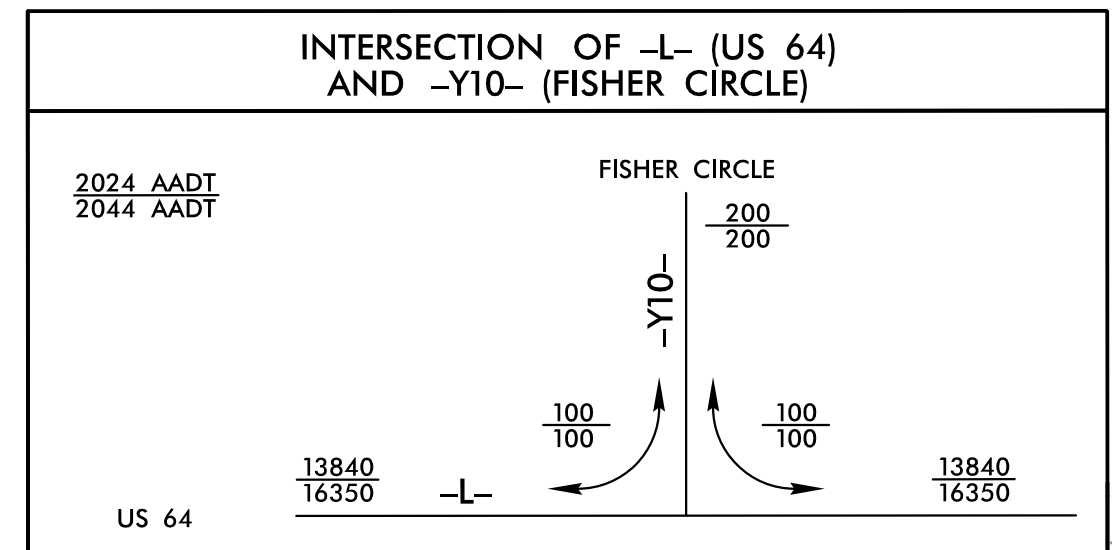
NOTE: UTILIZE FABRIC INSERT INLET PROTECTION DEVICE IN LIEU OF ROCK INLET SEDIMENT TRAP, TYPE-C, AS DIRECTED TO AVOID IMPOUNDMENT OF RUNOFF IN ROADWAY OPEN TO TRAFFIC.

NOTE: PLACE TEMPORARY ROCK SEDIMENT DAMS TYPE - B AND TEMPORARY ROCK SILT CHECKS TYPE - A AT DRAINAGE OUTLETS.

CLEARING AND GRUBBING EROSION CONTROL FOR CONSTRUCTION SHEET 9

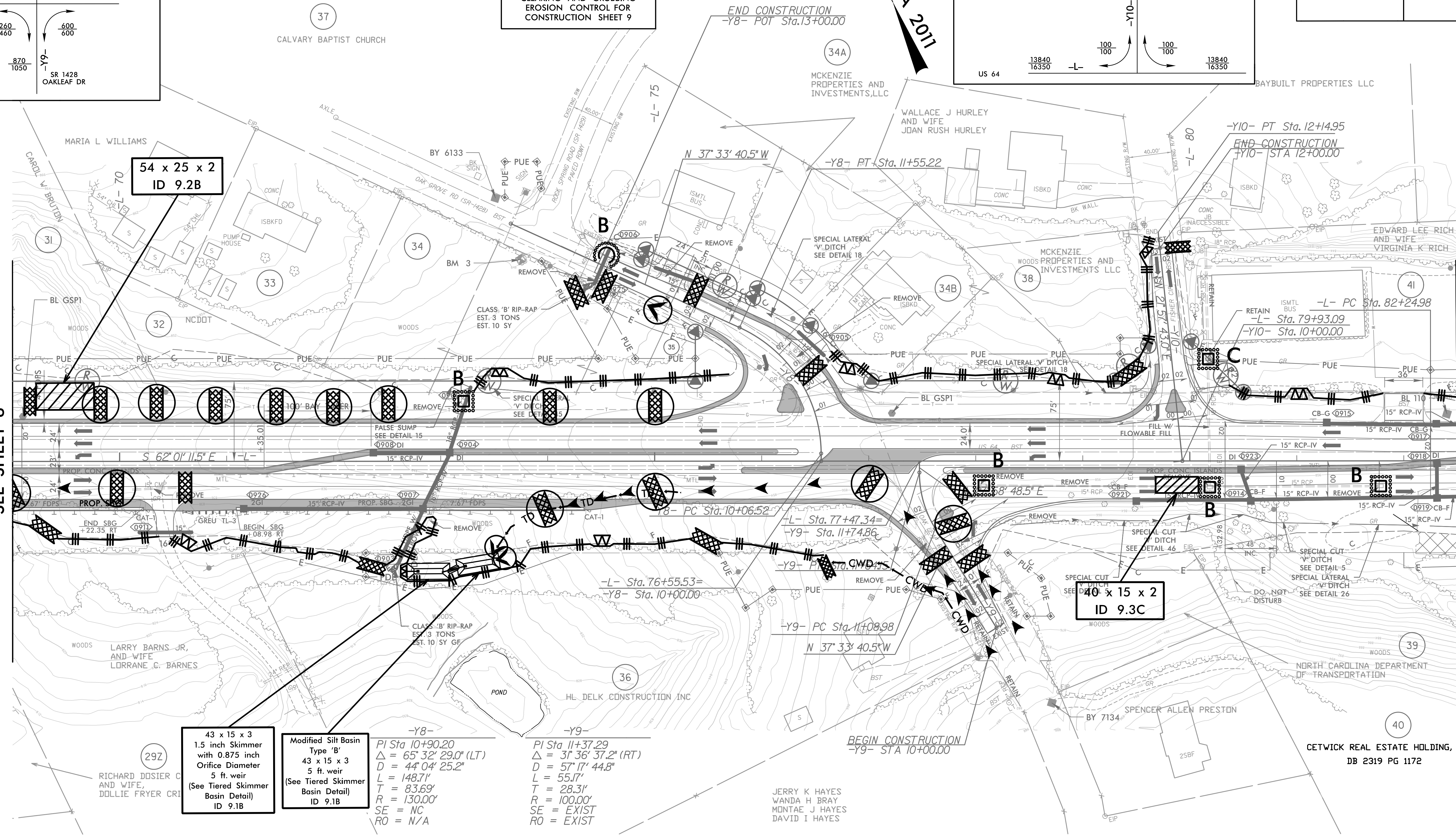
**HNTB** HNTB NORTH CAROLINA, P.C.  
343 E Six Forks Road, Suite 200  
Raleigh, North Carolina 27609  
NC License No: C-1554

PROJECT REFERENCE NO.	SHEET NO.
U-5813	EC-9/CONST.9
RW SHEET NO.	
ROADWAY DESIGN ENGINEER	HYDRAULICS ENGINEER



MATCH LINE -L- 69+00  
SEE SHEET 8

MATCH LINE -L- 82+50  
SEE SHEET 10



54 x 25 x 2  
ID 9.2B

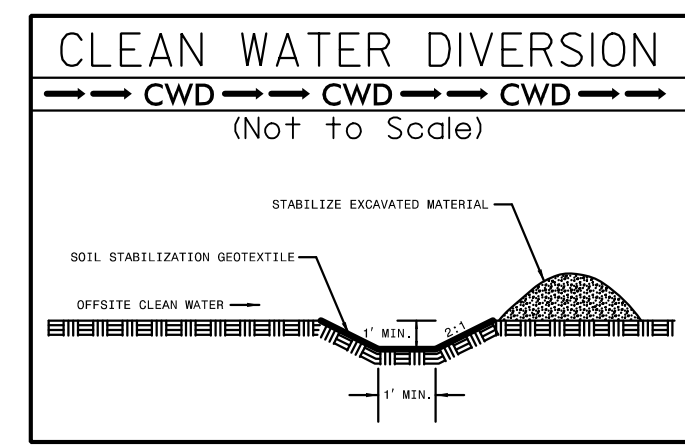
40 x 15 x 2  
ID 9.3C

43 x 15 x 3  
1.5 inch Skimmer  
with 0.875 inch  
Orifice Diameter  
5 ft. weir  
(See Tiered Skimmer  
Basin Detail)  
ID 9.1B

Modified Silt Basin  
Type 'B'  
43 x 15 x 3  
5 ft. weir  
(See Tiered Skimmer  
Basin Detail)  
ID 9.1B

-Y8-  
PI Sta 10+90.20  
 $\Delta = 65' 32" 29.0" (LT)$   
 $D = 44' 04" 25.2"$   
 $L = 148.71'$   
 $T = 83.69'$   
 $R = 130.00'$   
SE = NC  
RO = N/A

-Y9-  
PI Sta 11+37.29  
 $\Delta = 31' 36" 37.2" (RT)$   
 $D = 57' 17" 44.8"$   
 $L = 55.17'$   
 $T = 28.31'$   
 $R = 100.00'$   
SE = EXIST  
RO = EXIST



FOR -L-, -Y8-, -Y9-, & -Y10-  
DIMENSIONS, SEE SHEET 2B-2  
FOR -L- PROFILE, SEE SHEET 18  
FOR -Y8- PROFILE, SEE SHEET 24  
FOR -Y9-, -Y10- PROFILES, SEE SHEET 25

10.17.2023 Ec.PSH9.dgn