

4/3/2024 12:24:00 PM \\wse\Projects\NC\CorpldServer\Engineer\JOBS\0696\02511700_U-5813_Randolph\Lighting\Electrical\Lighting_Design\U5813_RDY_PSH15.dgn

LEGEND

- 2" UG LINE
- ⊕ 2" CONDUIT
- ⊙ LIGHT POST
- ⊠ ELECTRIC PED

ESTIMATED BILL OF MATERIALS		
UNIT	ITEM	QTY
LF	2" CONDUIT	166'
EA	LIGHT POST	2
EA	ELECTRIC PED	

DESCRIPTION	ALIGN	STATION	OFFSET	OFFSET
POLE 42	-Y-	44+37	51'	LT
POLE 43	-Y-	45+99	44'	RT

Weston Sampson
 WSE of North Carolina, PC
 2052 Energy Drive
 Phone: 919.297.0220

NC License: C-4847
 Apex, NC 27502
 westonandsampson.com

PROJECT REFERENCE NO. U-5813	SHEET NO. ECS-8
THIS SHEET CORRESPONDS TO RDY-15	

CONDUIT LAYOUT

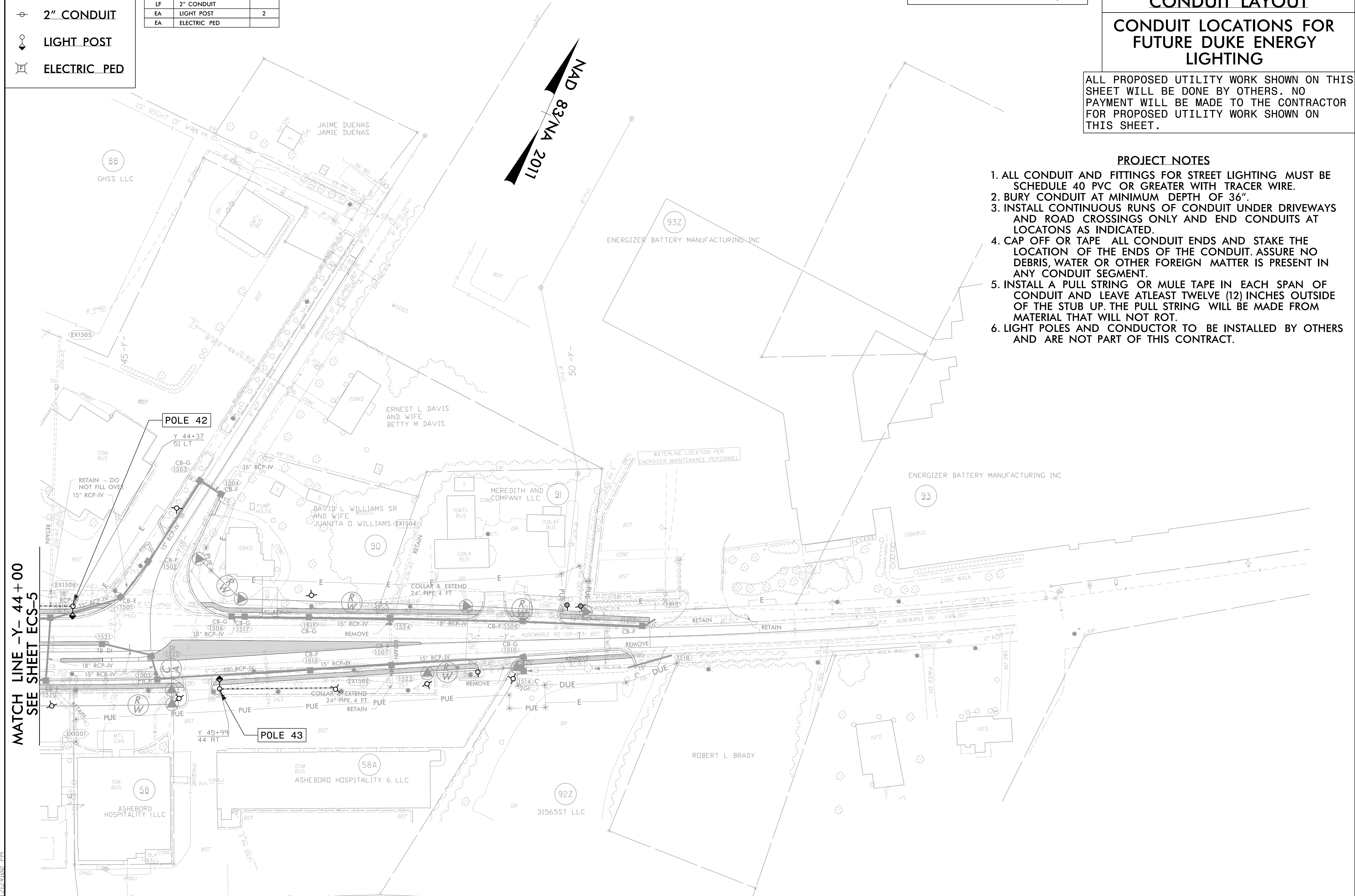
CONDUIT LOCATIONS FOR FUTURE DUKE ENERGY LIGHTING

ALL PROPOSED UTILITY WORK SHOWN ON THIS SHEET WILL BE DONE BY OTHERS. NO PAYMENT WILL BE MADE TO THE CONTRACTOR FOR PROPOSED UTILITY WORK SHOWN ON THIS SHEET.

PROJECT NOTES

1. ALL CONDUIT AND FITTINGS FOR STREET LIGHTING MUST BE SCHEDULE 40 PVC OR GREATER WITH TRACER WIRE.
2. BURY CONDUIT AT MINIMUM DEPTH OF 36".
3. INSTALL CONTINUOUS RUNS OF CONDUIT UNDER DRIVEWAYS AND ROAD CROSSINGS ONLY AND END CONDUITS AT LOCATIONS AS INDICATED.
4. CAP OFF OR TAPE ALL CONDUIT ENDS AND STAKE THE LOCATION OF THE ENDS OF THE CONDUIT. ASSURE NO DEBRIS, WATER OR OTHER FOREIGN MATTER IS PRESENT IN ANY CONDUIT SEGMENT.
5. INSTALL A PULL STRING OR MULE TAPE IN EACH SPAN OF CONDUIT AND LEAVE ATLEAST TWELVE (12) INCHES OUTSIDE OF THE STUB UP. THE PULL STRING WILL BE MADE FROM MATERIAL THAT WILL NOT ROT.
6. LIGHT POLES AND CONDUCTOR TO BE INSTALLED BY OTHERS AND ARE NOT PART OF THIS CONTRACT.

MATCH LINE -Y- 44+00
SEE SHEET ECS-5



NAD 83/NA 2011