

4/3/2024 12:23:56 PM \\wse\Projects\NC\CorpldServer\Engineer\JOBS\0696\02511700_U-5813_Randolph\Lighting\LightingElectrical\Design\U5813_RDY_PSH14.dgn

LEGEND

- 2" UG LINE
- ⊕ 2" CONDUIT
- ⊙ LIGHT POST
- ⊠ ELECTRIC PED

| ESTIMATED BILL OF MATERIALS | | |
|-----------------------------|--------------|------|
| UNIT | ITEM | QTY |
| LF | 2" CONDUIT | 303' |
| EA | LIGHT POST | 2 |
| EA | ELECTRIC PED | |

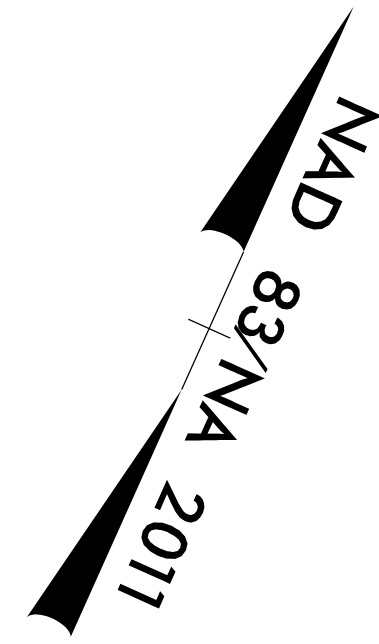
| DESCRIPTION | ALIGN | STATION | OFFSET | OFFSET |
|-------------|-------|---------|--------|--------|
| POLE 8 | -Y- | 15+75 | 48' | RT |
| POLE 9 | -Y- | 17+57 | 60' | RT |

Weston & Sampson
 WSE of North Carolina, PC
 2052 Energy Drive
 Phone: 919.297.0220
 NC License: C-4947
 Apex, NC 27502
 westonandsampson.com

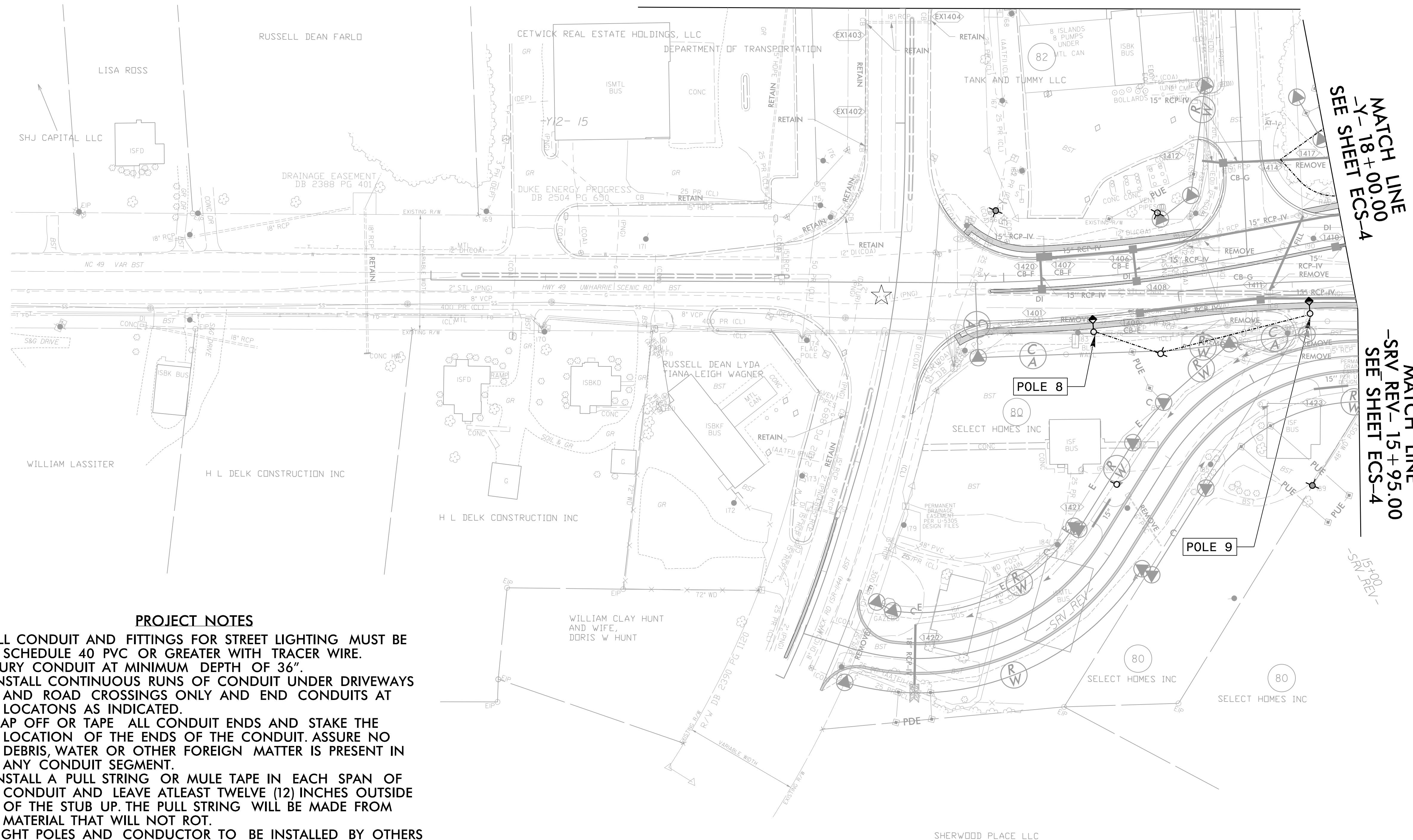
| PROJECT REFERENCE NO. | SHEET NO. |
|----------------------------------|-----------|
| U-5813 | ECS-7 |
| THIS SHEET CORRESPONDS TO RDY-14 | |

CONDUIT LAYOUT
CONDUIT LOCATIONS FOR FUTURE DUKE ENERGY LIGHTING

ALL PROPOSED UTILITY WORK SHOWN ON THIS SHEET WILL BE DONE BY OTHERS. NO PAYMENT WILL BE MADE TO THE CONTRACTOR FOR PROPOSED UTILITY WORK SHOWN ON THIS SHEET.



MATCH LINE -Y12- 16+00
SEE SHEET ECS-3



☆ EXISTING SIGNAL

PROJECT NOTES

1. ALL CONDUIT AND FITTINGS FOR STREET LIGHTING MUST BE SCHEDULE 40 PVC OR GREATER WITH TRACER WIRE.
2. BURY CONDUIT AT MINIMUM DEPTH OF 36".
3. INSTALL CONTINUOUS RUNS OF CONDUIT UNDER DRIVEWAYS AND ROAD CROSSINGS ONLY AND END CONDUITS AT LOCATIONS AS INDICATED.
4. CAP OFF OR TAPE ALL CONDUIT ENDS AND STAKE THE LOCATION OF THE ENDS OF THE CONDUIT. ASSURE NO DEBRIS, WATER OR OTHER FOREIGN MATTER IS PRESENT IN ANY CONDUIT SEGMENT.
5. INSTALL A PULL STRING OR MULE TAPE IN EACH SPAN OF CONDUIT AND LEAVE ATLEAST TWELVE (12) INCHES OUTSIDE OF THE STUB UP. THE PULL STRING WILL BE MADE FROM MATERIAL THAT WILL NOT ROT.
6. LIGHT POLES AND CONDUCTOR TO BE INSTALLED BY OTHERS AND ARE NOT PART OF THIS CONTRACT.

MATCH LINE
-Y- 18+00.00
SEE SHEET ECS-4

MATCH LINE
-SRV REV- 15+95.00
SEE SHEET ECS-4

-SRV REV-