

4/3/2024 12:23:47 PM \\wse\Projects\NC\CorpldServer\Engineer\Jobs\Projects\NC\U-5813_Randolph\Lighting\Lighting\Design\U5813_RDY_PSH13.dgn
 8/17/99

LEGEND

- 2" UG LINE
- ⊕ 2" CONDUIT
- ⊙ LIGHT POST
- ⊠ ELECTRIC PED

ESTIMATED BILL OF MATERIALS		
UNIT	ITEM	QTY
LF	2" CONDUIT	758'
EA	LIGHT POST	5
EA	ELECTRIC PED	2

DESCRIPTION	ALIGN	STATION	OFFSET	OFFSET
POLE 37	-L-	122+03	60'	RT
POLE 38	-L-	122+66	63'	LT
POLE 39	-L-	124+57	54'	LT
POLE 40	-L-	126+60	52'	LT
POLE 41	-L-	128+67	50'	LT

Weston Sampson
 WSE of North Carolina, PC
 2052 Energy Drive
 Phone: 919.297.0220
 NC License: C-4847
 Apex, NC 27502
 westonandsampson.com

PROJECT REFERENCE NO. U-5813	SHEET NO. ECS-6
THIS SHEET CORRESPONDS TO RDY-13	

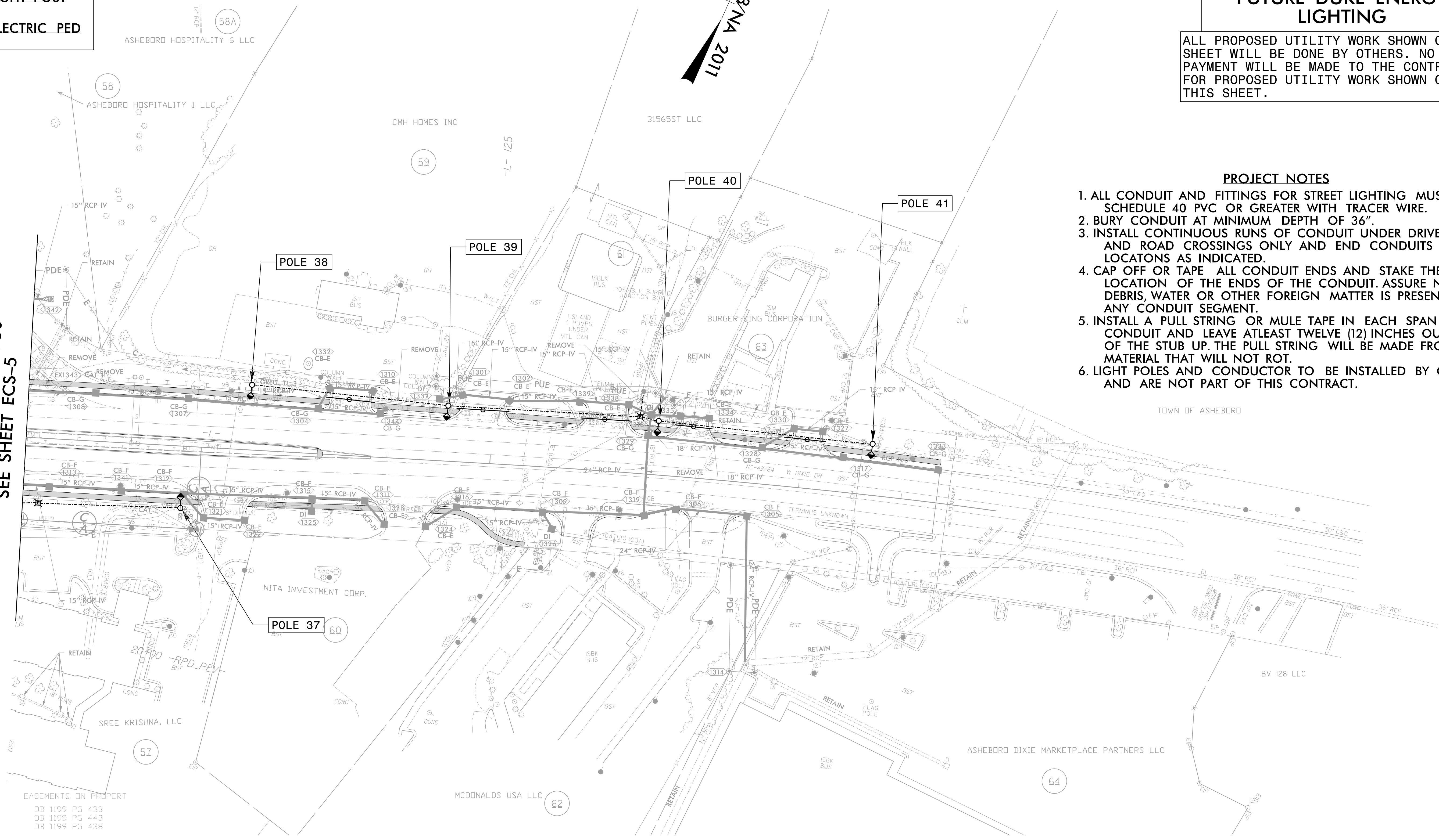
CONDUIT LAYOUT
CONDUIT LOCATIONS FOR FUTURE DUKE ENERGY LIGHTING

ALL PROPOSED UTILITY WORK SHOWN ON THIS SHEET WILL BE DONE BY OTHERS. NO PAYMENT WILL BE MADE TO THE CONTRACTOR FOR PROPOSED UTILITY WORK SHOWN ON THIS SHEET.

PROJECT NOTES

1. ALL CONDUIT AND FITTINGS FOR STREET LIGHTING MUST BE SCHEDULE 40 PVC OR GREATER WITH TRACER WIRE.
2. BURY CONDUIT AT MINIMUM DEPTH OF 36".
3. INSTALL CONTINUOUS RUNS OF CONDUIT UNDER DRIVEWAYS AND ROAD CROSSINGS ONLY AND END CONDUITS AT LOCATIONS AS INDICATED.
4. CAP OFF OR TAPE ALL CONDUIT ENDS AND STAKE THE LOCATION OF THE ENDS OF THE CONDUIT. ASSURE NO DEBRIS, WATER OR OTHER FOREIGN MATTER IS PRESENT IN ANY CONDUIT SEGMENT.
5. INSTALL A PULL STRING OR MULE TAPE IN EACH SPAN OF CONDUIT AND LEAVE ATLEAST TWELVE (12) INCHES OUTSIDE OF THE STUB UP. THE PULL STRING WILL BE MADE FROM MATERIAL THAT WILL NOT ROT.
6. LIGHT POLES AND CONDUCTOR TO BE INSTALLED BY OTHERS AND ARE NOT PART OF THIS CONTRACT.

MATCH LINE -L- 120 + 50
SEE SHEET ECS-5



EASEMENTS ON PROPERTY
 DB 1199 PG 433
 DB 1199 PG 443
 DB 1199 PG 438