

NAD 83/NA 2011

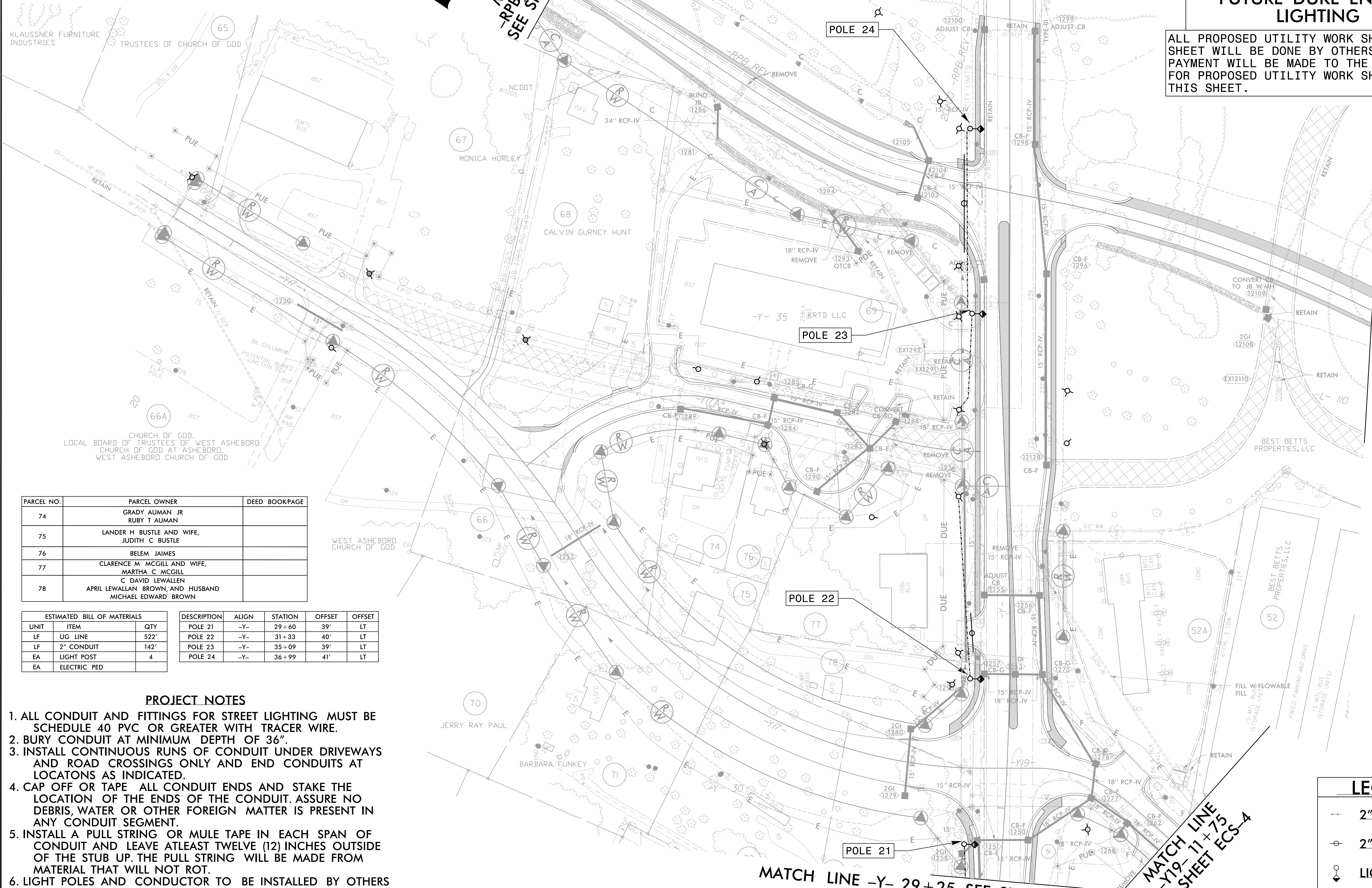
MATCH LINE
 -RPB REV- 15+70
 SEE SHEET ECS-5A

MATCH LINE -Y- 38+50
 SEE SHEET ECS-5A

CONDUIT LAYOUT
CONDUIT LOCATIONS FOR FUTURE DUKE ENERGY LIGHTING

ALL PROPOSED UTILITY WORK SHOWN ON THIS SHEET WILL BE DONE BY OTHERS. NO PAYMENT WILL BE MADE TO THE CONTRACTOR FOR PROPOSED UTILITY WORK SHOWN ON THIS SHEET.

MATCH LINE
 -RPBC- 13+93
 SEE SHEET ECS-5C



PARCEL NO.	PARCEL OWNER	DEED BOOKPAGE
74	GRADY AUMAN JR RUBY T AUMAN	
75	LANDER H BUSTLE AND WIFE, JUDITH C BUSTLE	
76	BELEM JAIMES	
77	CLARENCE M MCGILL AND WIFE, MARTHA C MCGILL	
78	C DAVID LEWALLEN APRIL LEWALLAN BROWN, AND HUSBAND MICHAEL EDWARD BROWN	

ESTIMATED BILL OF MATERIALS			DESCRIPTION			
UNIT	ITEM	QTY	ALIGN	STATION	OFFSET	OFFSET
LF	UG LINE	522'	POLE 21	-Y- 29+60	39'	LT
LF	2" CONDUIT	142'	POLE 22	-Y- 31+33	40'	LT
EA	LIGHT POST	4	POLE 23	-Y- 35+09	39'	LT
EA	ELECTRIC PED		POLE 24	-Y- 36+99	41'	LT

PROJECT NOTES

1. ALL CONDUIT AND FITTINGS FOR STREET LIGHTING MUST BE SCHEDULE 40 PVC OR GREATER WITH TRACER WIRE.
2. BURY CONDUIT AT MINIMUM DEPTH OF 36".
3. INSTALL CONTINUOUS RUNS OF CONDUIT UNDER DRIVEWAYS AND ROAD CROSSINGS ONLY AND END CONDUITS AT LOCATIONS AS INDICATED.
4. CAP OFF OR TAPE ALL CONDUIT ENDS AND STAKE THE LOCATION OF THE ENDS OF THE CONDUIT. ASSURE NO DEBRIS, WATER OR OTHER FOREIGN MATTER IS PRESENT IN ANY CONDUIT SEGMENT.
5. INSTALL A PULL STRING OR MULE TAPE IN EACH SPAN OF CONDUIT AND LEAVE ATLEAST TWELVE (12) INCHES OUTSIDE OF THE STUB UP. THE PULL STRING WILL BE MADE FROM MATERIAL THAT WILL NOT ROT.
6. LIGHT POLES AND CONDUCTOR TO BE INSTALLED BY OTHERS AND ARE NOT PART OF THIS CONTRACT.

LEGEND

- 2" UG LINE
- ⊕ 2" CONDUIT
- ⊙ LIGHT POST
- ⊞ ELECTRIC PED

MATCH LINE -Y- 29+25 SEE SHEET ECS-4

MATCH LINE
 -Y- 11+75
 SEE SHEET ECS-4