

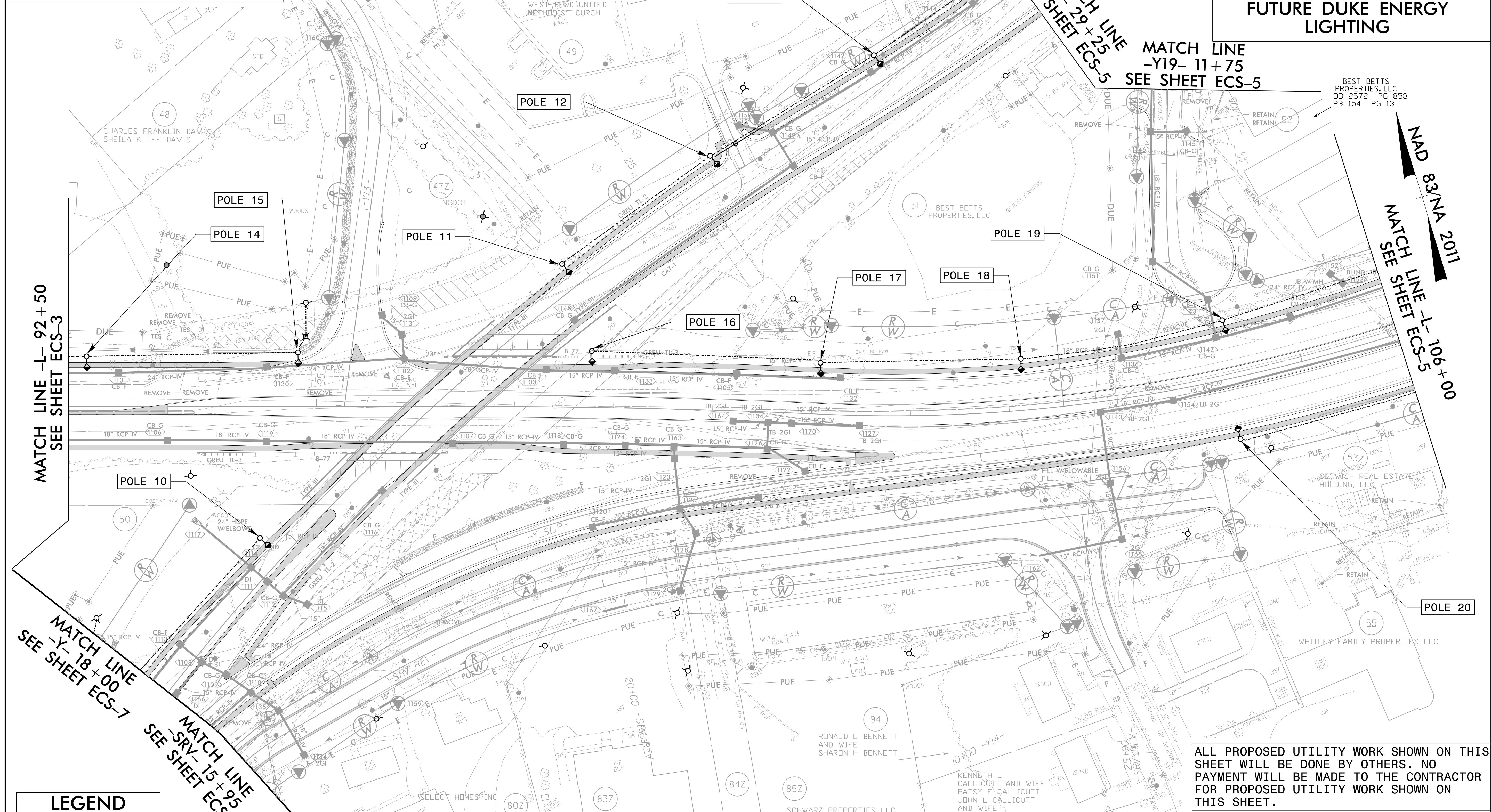
**CONDUIT LAYOUT**  
**CONDUIT LOCATIONS FOR**  
**FUTURE DUKE ENERGY**  
**LIGHTING**

**CONDUIT LAYOUT**  
**CONDUIT LOCATIONS FOR**  
**FUTURE DUKE ENERGY**  
**LIGHTING**

Weston Sampson  
 WSE of North Carolina, PC  
 2052 Energy Drive  
 Phone: 919.287.0220

NC License:  
 C-4847  
 Apex, NC 27502  
 westonandsampson.com

PROJECT REFERENCE NO.	SHEET NO.
U-5813	ECS-4
THIS SHEET CORRESPONDS TO RDY-11	



**LEGEND**

---	2" UG LINE
⊕	2" CONDUIT
⊙	LIGHT POST
⊕	ELECTRIC PED

- PROJECT NOTES**
1. ALL CONDUIT AND FITTINGS FOR STREET LIGHTING MUST BE SCHEDULE 40 PVC OR GREATER WITH TRACER WIRE.
  2. BURY CONDUIT AT MINIMUM DEPTH OF 36".
  3. INSTALL CONTINUOUS RUNS OF CONDUIT UNDER DRIVEWAYS AND ROAD CROSSINGS ONLY AND END CONDUITS AT LOCATIONS AS INDICATED.
  4. CAP OFF OR TAPE ALL CONDUIT ENDS AND STAKE THE LOCATION OF THE ENDS OF THE CONDUIT. ASSURE NO DEBRIS, WATER OR OTHER FOREIGN MATTER IS PRESENT IN ANY CONDUIT SEGMENT.
  5. INSTALL A PULL STRING OR MULE TAPE IN EACH SPAN OF CONDUIT AND LEAVE ATLEAST TWELVE (12) INCHES OUTSIDE OF THE STUB UP. THE PULL STRING WILL BE MADE FROM MATERIAL THAT WILL NOT ROT.
  6. LIGHT POLES AND CONDUCTOR TO BE INSTALLED BY OTHERS AND ARE NOT PART OF THIS CONTRACT.

ALL PROPOSED UTILITY WORK SHOWN ON THIS SHEET WILL BE DONE BY OTHERS. NO PAYMENT WILL BE MADE TO THE CONTRACTOR FOR PROPOSED UTILITY WORK SHOWN ON THIS SHEET.

**ESTIMATED BILL OF MATERIALS**

UNIT	ITEM	QTY
LF	UG LINE	1995'
LF	2" CONDUIT	58'
EA	LIGHT POST	9
EA	ELECTRIC PED	2

DESCRIPTION	ALIGN	STATION	OFFSET	OFFSET
POLE 10	-Y-	19+78	30'	LT
POLE 11	-Y-	23+85	26'	LT
POLE 12	-Y-	25+68	28'	LT
POLE 13	-Y-	27+62	27'	LT
POLE 14	-L-	92+68	51'	LT
POLE 15	-L-	94+81	55'	LT
POLE 16	-L-	97+77	57'	LT
POLE 17	-L-	100+07	52'	LT
POLE 18	-L-	102+16	52'	LT
POLE 19	-L-	104+30	59'	RT
POLE 20	-L-	104+23	62'	RT

8/17/99  
 4/3/2024  
 C:\Users\jca\OneDrive\Projects\NC\CarrollServer\Engineer\Jobs\6696\2511700\_U-5813\_Randolph\Lighting\Electrical\RDY\_PSH1.dgn  
 12:23:12 PM

NAD 83/NA 2011  
 MATCH LINE -L- 106+00  
 SEE SHEET ECS-5

MATCH LINE -L- 92+50  
 SEE SHEET ECS-3

MATCH LINE -Y- 18+00  
 SEE SHEET ECS-7  
 MATCH LINE -SRV- 15+95  
 SEE SHEET ECS-7

MATCH LINE -Y- 29+25  
 SEE SHEET ECS-5

MATCH LINE -Y19- 11+75  
 SEE SHEET ECS-5