

4/3/2024 12:23:06 PM \\wse\Projects\NC\CorridServer\Engineer\JOBS\0696\025\11700_U-5813_Randolph\Lighting\Electrical\RDY_PSH10.dgn
 8/17/99

LEGEND

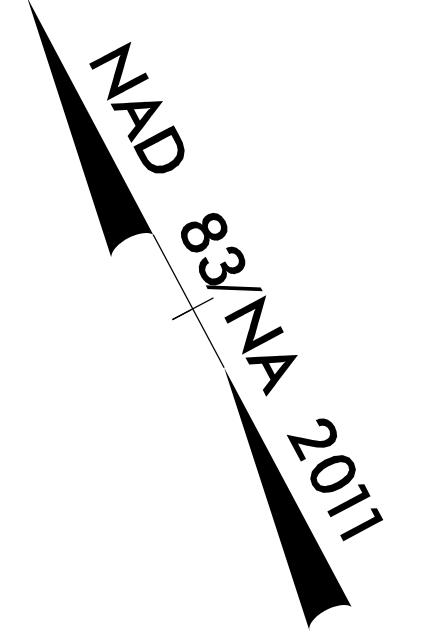
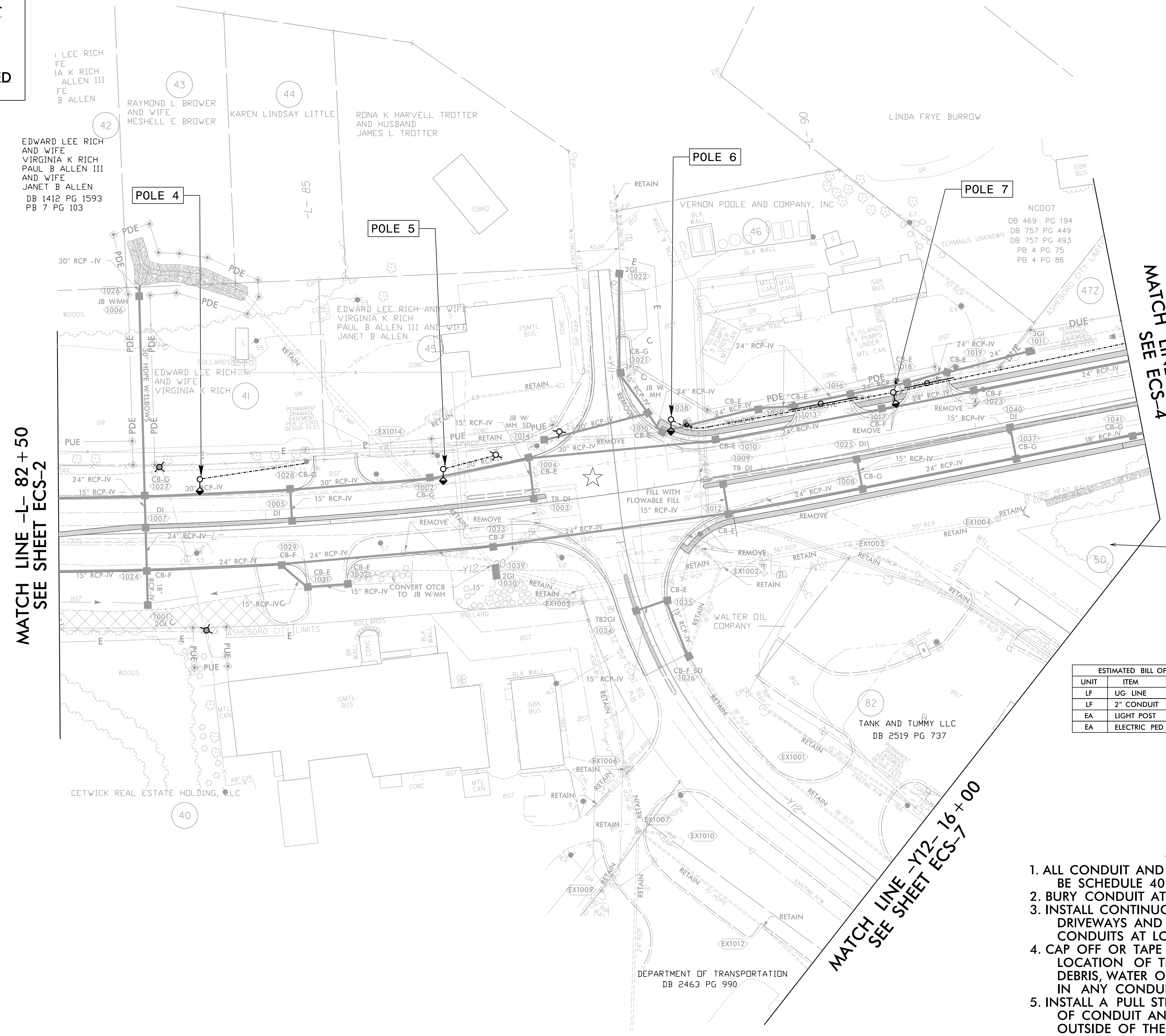
	2" UG LINE
	2" CONDUIT
	LIGHT POST
	ELECTRIC PED

Weston Sampson
 WSE of North Carolina, PC
 2052 Energy Drive
 Phone: 919.297.0220
 NC License: C-4847
 Apex, NC 27502
 westonandsampson.com

PROJECT REFERENCE NO. U-5813	SHEET NO. ECS-3
THIS SHEET CORRESPONDS TO RDY-10	

CONDUIT LAYOUT
CONDUIT LOCATIONS FOR
FUTURE DUKE ENERGY
LIGHTING

ALL PROPOSED UTILITY WORK SHOWN ON THIS SHEET WILL BE DONE BY OTHERS. NO PAYMENT WILL BE MADE TO THE CONTRACTOR FOR PROPOSED UTILITY WORK SHOWN ON THIS SHEET.



☆ EXISTING SIGNAL

ESTIMATED BILL OF MATERIALS

UNIT	ITEM	QTY
LF	UG LINE	577'
LF	2" CONDUIT	121'
EA	LIGHT POST	4
EA	ELECTRIC PED	

DESCRIPTION	ALIGN	STATION	OFFSET	OFFSET
POLE 4	-L-	83+82	48'	LT
POLE 5	-L-	86+08	41'	LT
POLE 6	-L-	88+25	60'	LT
POLE 7	-L-	90+32	47.1'	LT

- PROJECT NOTES**
- ALL CONDUIT AND FITTINGS FOR STREET LIGHTING MUST BE SCHEDULE 40 PVC OR GREATER WITH TRACER WIRE.
 - BURY CONDUIT AT MINIMUM DEPTH OF 36".
 - INSTALL CONTINUOUS RUNS OF CONDUIT UNDER DRIVEWAYS AND ROAD CROSSINGS ONLY AND END CONDUITS AT LOCATIONS AS INDICATED.
 - CAP OFF OR TAPE ALL CONDUIT ENDS AND STAKE THE LOCATION OF THE ENDS OF THE CONDUIT. ASSURE NO DEBRIS, WATER OR OTHER FOREIGN MATTER IS PRESENT IN ANY CONDUIT SEGMENT.
 - INSTALL A PULL STRING OR MULE TAPE IN EACH SPAN OF CONDUIT AND LEAVE ATLEAST TWELVE (12) INCHES OUTSIDE OF THE STUB UP. THE PULL STRING WILL BE MADE FROM MATERIAL THAT WILL NOT ROT.
 - LIGHT POLES AND CONDUCTOR TO BE INSTALLED BY OTHERS AND ARE NOT PART OF THIS CONTRACT.

STATE HIGHWAY
 PUBLIC WORKS
 COMMISSION
 DB 469 PG 191
 DB 428 PG 156