

4/3/2024 12:23:00 PM \\wse\Projects\NC\CarrollServer\Engineer\Jobs\0696\02511700\_U-5813\_Randolph\Lighting\Electrical\Design\U5813\_RDY\_PSH9.dgn

**LEGEND**

	2" UG LINE
	2" CONDUIT
	LIGHT POST
	ELECTRIC PED

PARCEL NO.	PARCEL OWNER	DEED BOOK/PAGE
33	THE JESSE TATE LEONARD FAMILY TRUST TRUSTEES PHYLIS LEONARD MARTENS JESSE TATE LEONARD	
34/34B	MCKENZIE PROPERTIES AND INVESTMENTS,LLC	
35	ANDREW MARK SCHWARZ	

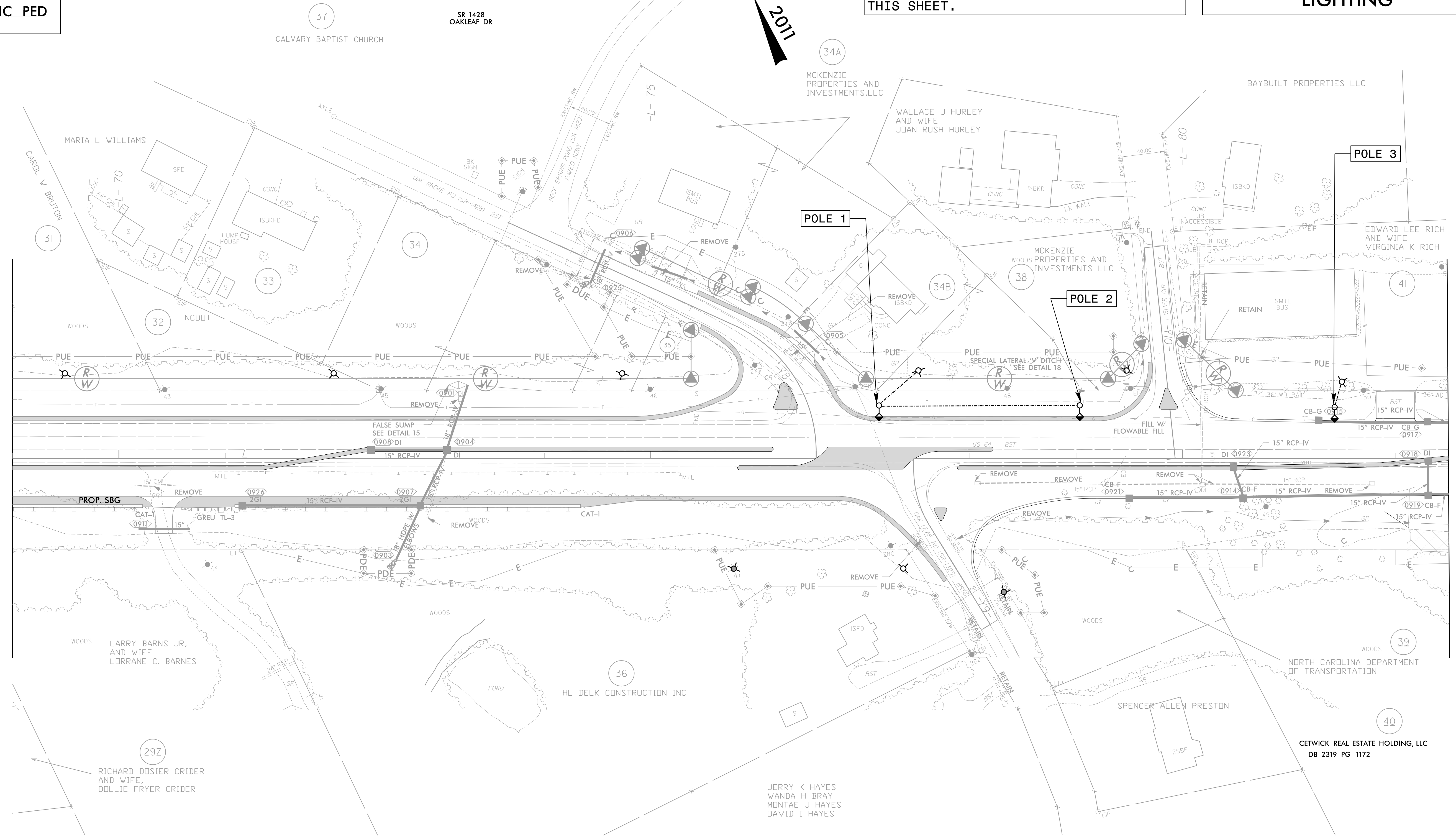
**Weston Sampson**  
 WSE of North Carolina, PC  
 2052 Energy Drive  
 Phone: 919.297.0220

NC License: C-4847  
 Apex, NC 27502  
 westonandsampson.com

PROJECT REFERENCE NO. U-5813	SHEET NO. ECS-2
THIS SHEET CORRESPONDS TO RDY-9	

**CONDUIT LAYOUT**  
**CONDUIT LOCATIONS FOR FUTURE DUKE ENERGY LIGHTING**

ALL PROPOSED UTILITY WORK SHOWN ON THIS SHEET WILL BE DONE BY OTHERS. NO PAYMENT WILL BE MADE TO THE CONTRACTOR FOR PROPOSED UTILITY WORK SHOWN ON THIS SHEET.



- PROJECT NOTES**
- ALL CONDUIT AND FITTINGS FOR STREET LIGHTING MUST BE SCHEDULE 40 PVC OR GREATER WITH TRACER WIRE.
  - BURY CONDUIT AT MINIMUM DEPTH OF 36".
  - INSTALL CONTINUOUS RUNS OF CONDUIT UNDER DRIVEWAYS AND ROAD CROSSINGS ONLY AND END CONDUITS AT LOCATIONS AS INDICATED.
  - CAP OFF OR TAPE ALL CONDUIT ENDS AND STAKE THE LOCATION OF THE ENDS OF THE CONDUIT. ASSURE NO DEBRIS, WATER OR OTHER FOREIGN MATTER IS PRESENT IN ANY CONDUIT SEGMENT.
  - INSTALL A PULL STRING OR MULE TAPE IN EACH SPAN OF CONDUIT AND LEAVE ATLEAST TWELVE (12) INCHES OUTSIDE OF THE STUB UP. THE PULL STRING WILL BE MADE FROM MATERIAL THAT WILL NOT ROT.
  - LIGHT POLES AND CONDUCTOR TO BE INSTALLED BY OTHERS AND ARE NOT PART OF THIS CONTRACT.

**ESTIMATED BILL OF MATERIALS**

UNIT	ITEM	QTY
LF	UG LINE	290'
LF	2" CONDUIT	
EA	LIGHT POST	3
EA	ELECTRIC PED	

DESCRIPTION	ALIGN	STATION	OFFSET	OFFSET
POLE 1	-L-	77+15	50'	LT
POLE 2	-L-	79+04	50'	LT
POLE 3	-L-	81+43	48'	LT

MATCH LINE -L- 82 + 50  
SEE SHEET ECS-3