

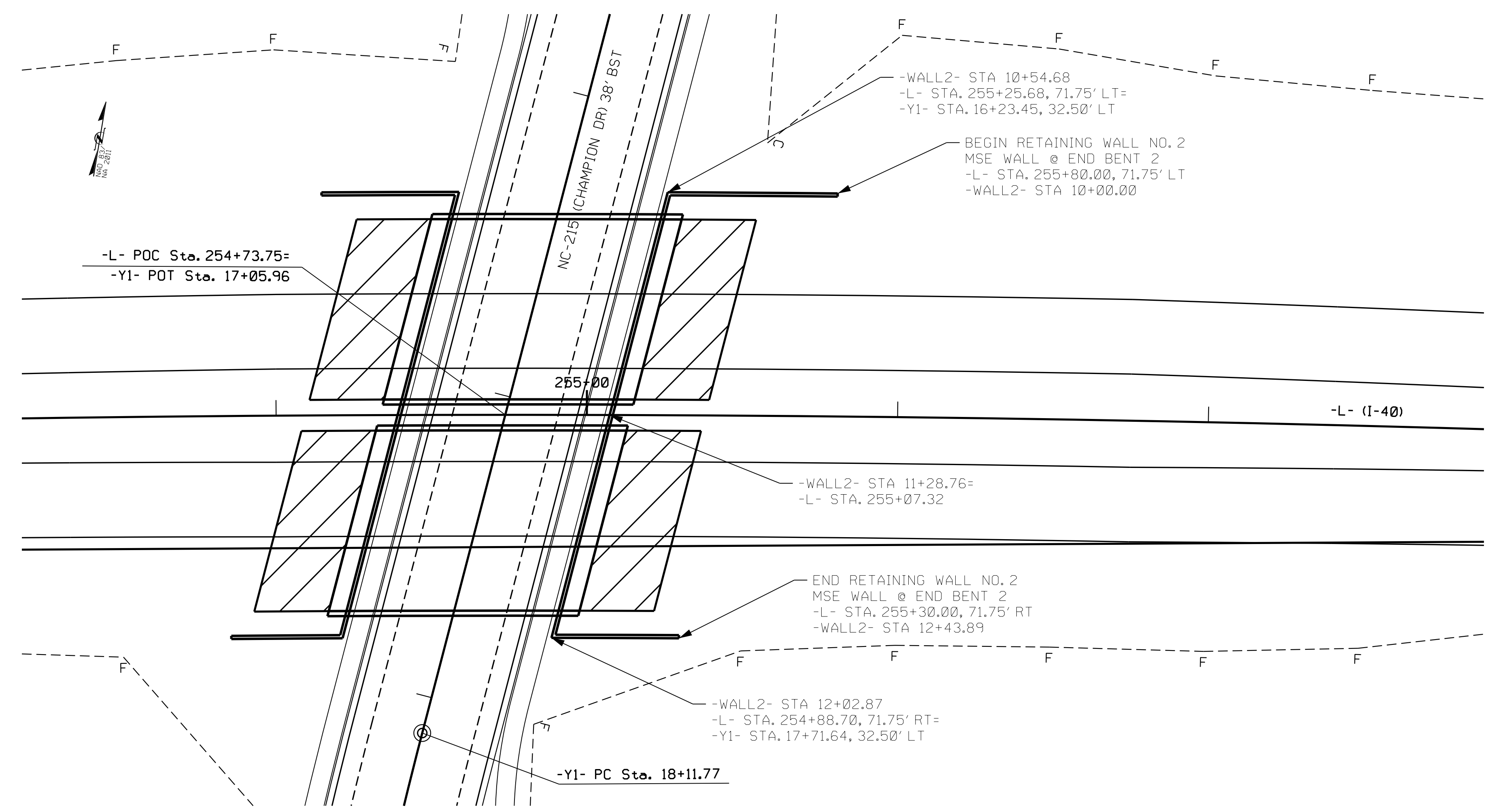
GEOTECHNICAL ENGINEER

ENGINEER

Designed by: *M.H. Stephens* 01/03/2024

SIGNATURE DATE SIGNATURE DATE

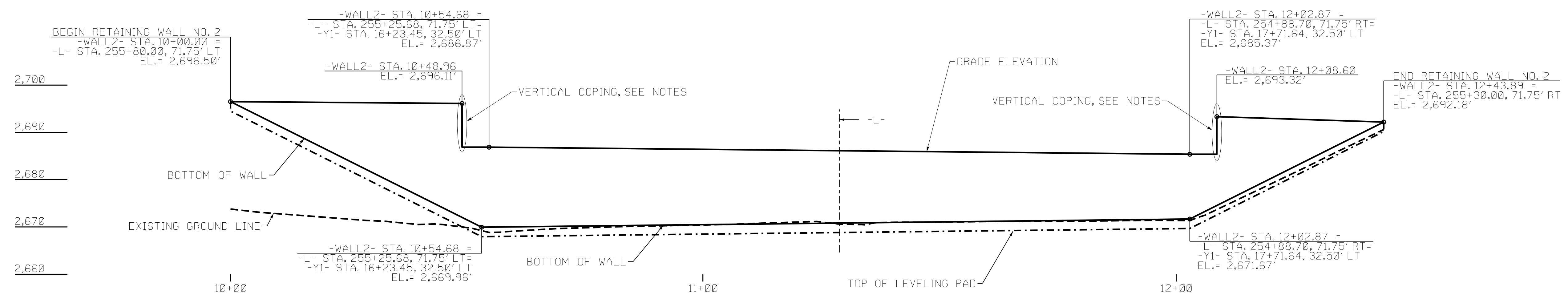
**DOCUMENT NOT CONSIDERED FINAL UNLESS ALL SIGNATURES COMPLETED**



RETAINING WALL NO. 2 - PLAN VIEW

ESTIMATED MSE WALL QUANTITY	
RETAINING WALL NO. 2	•3,560 SQUARE FEET

• WALL AREA IS MEASURED USING THE DESIGN HEIGHT 'H'



RETAINING WALL NO. 2 - ENVELOPE  
THE WALL ENVELOPE DOES NOT ACCURATELY DEPICT THE ACTUAL FACE OF THE WALL

PROJECT NO.: 55041.1.1 (HB-0004)  
HAYWOOD COUNTY  
STATION: -L- STA. 255+07.32  
SHEET 2 OF 5

PREPARED BY: MHS	DATE: 1/24
REVIEWED BY: ENW/SCC	DATE: 1/24

NORTH CAROLINA DEPARTMENT OF TRANSPORTATION  
DIVISION OF HIGHWAYS

GEOTECHNICAL ENGINEERING UNIT

REVISIONS					
NO.	BY	DATE	NO.	BY	DATE
1			3		
2			4		

SHEET NO. W-2