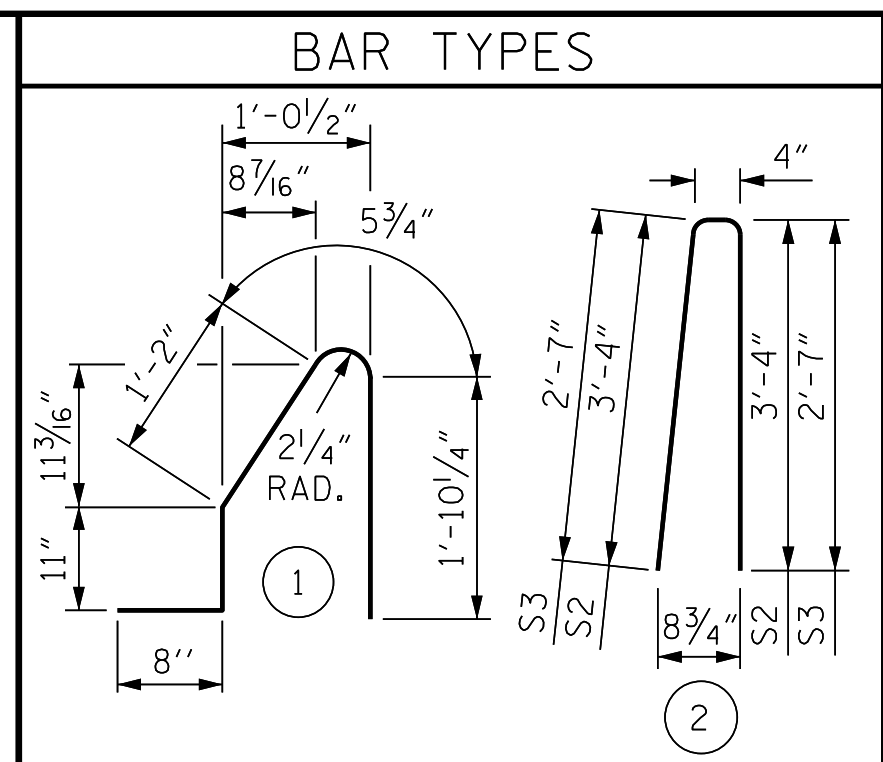
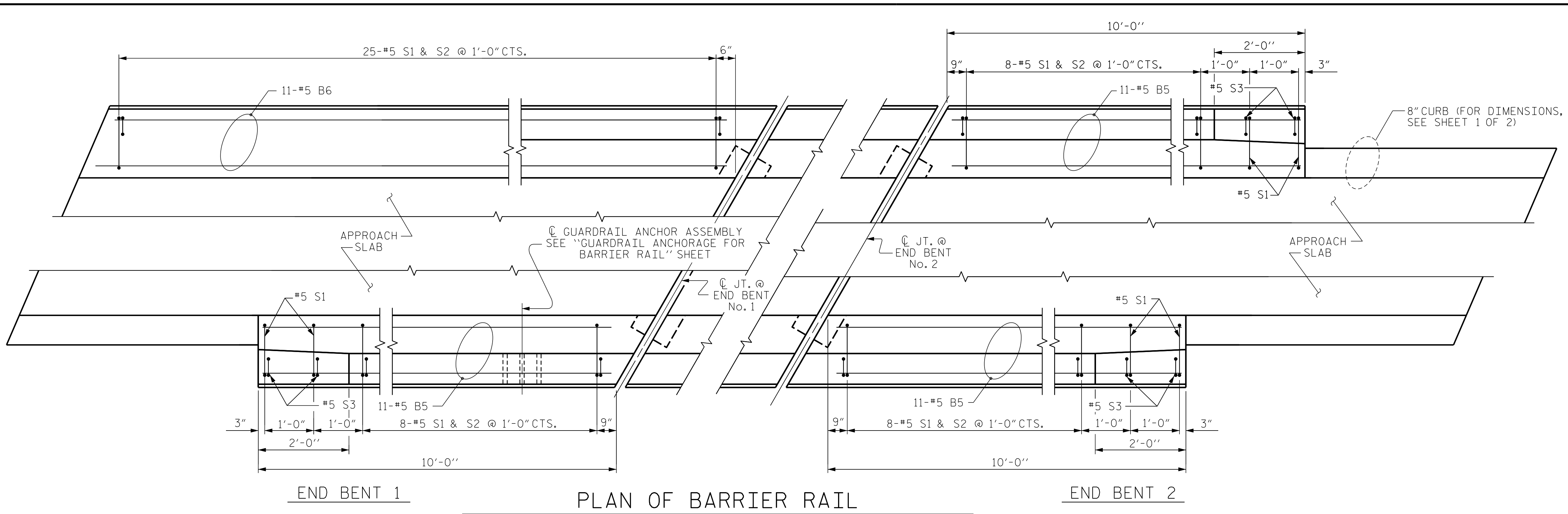


P:\2023\2312401-HB-0004-Structures\Drawings\HB-0004-RIGHT LANE\HB0004-RIGHT-AS.dgn  
 1/19/2024 7:18:03 AM



ALL BAR DIMENSIONS ARE OUT TO OUT

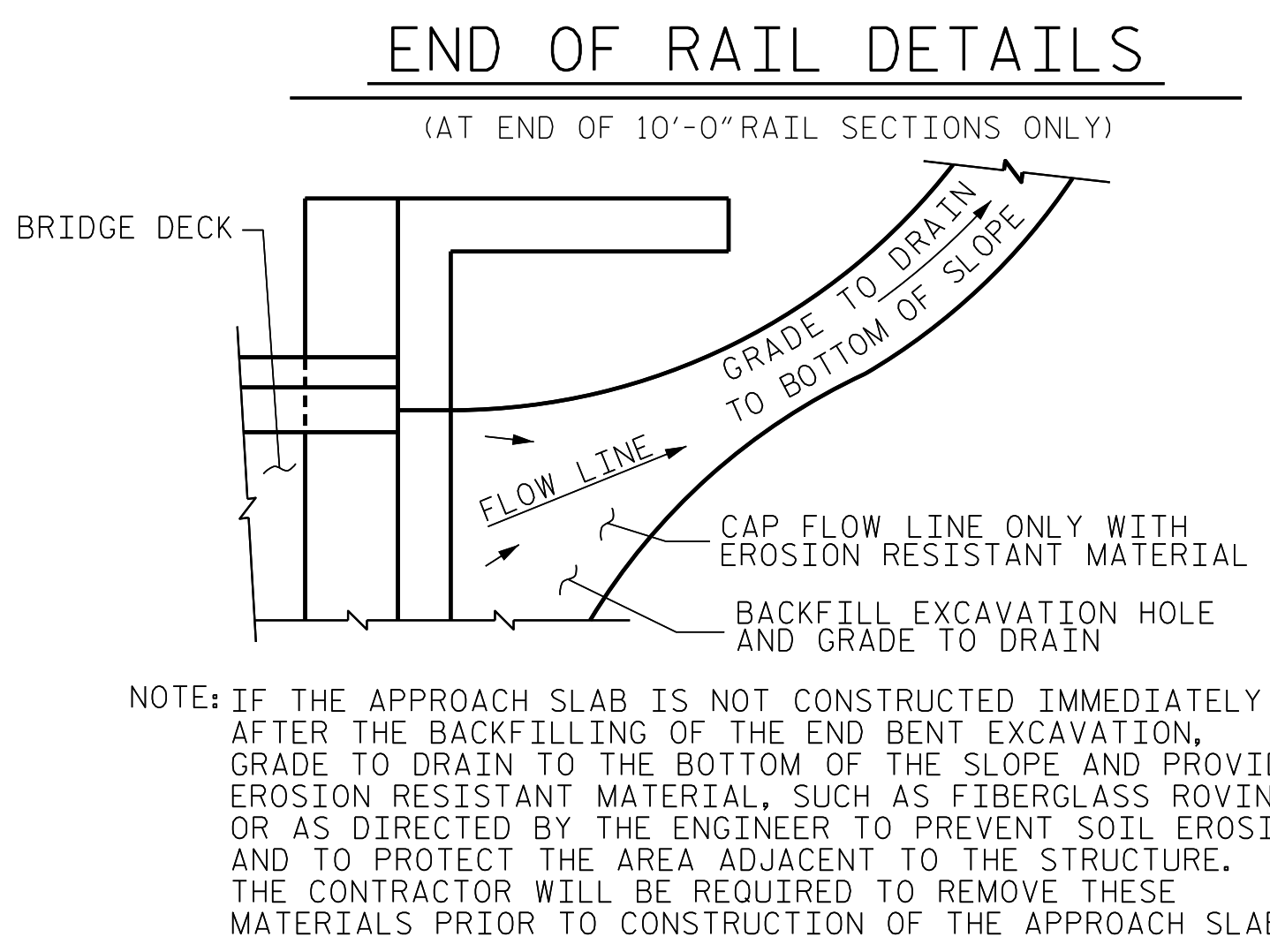
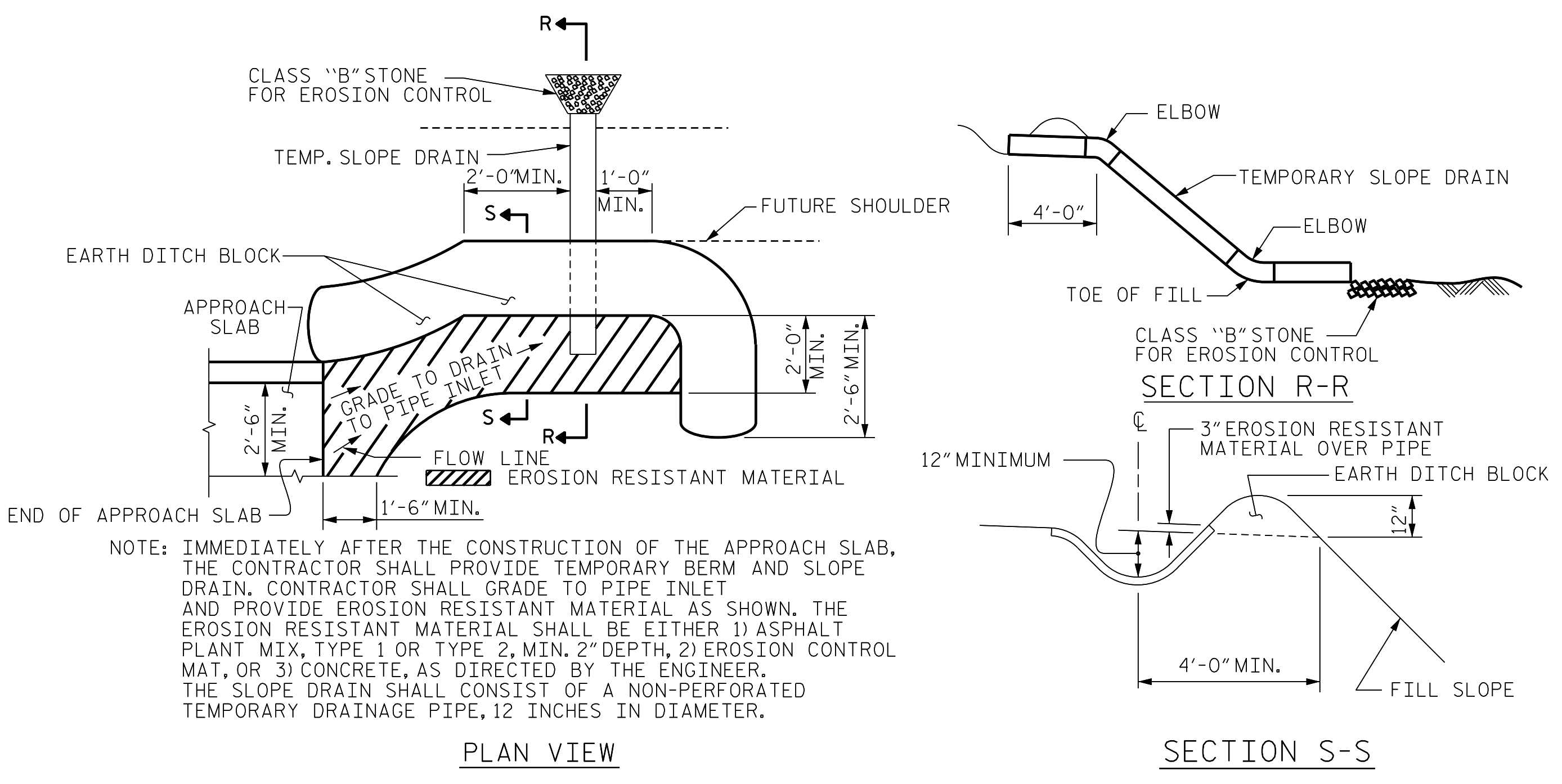
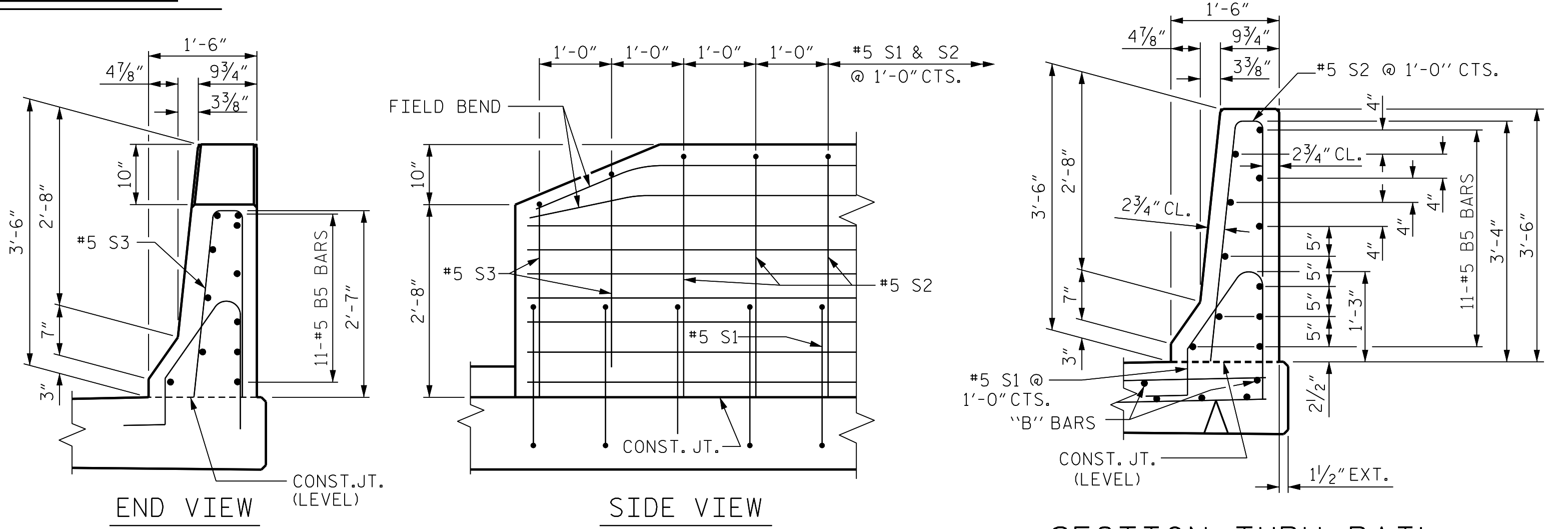
BILL OF MATERIAL					
BARRIER RAIL ONLY					
BAR	NO.	SIZE	TYPE	LENGTH	WEIGHT
* B5	33	#5	STR	9'-8"	333
* B6	11	#5	STR	24'-4"	279
* S1	55	#5	1	5'-1"	292
* S2	49	#5	2	7'-0"	358
* S3	6	#5	2	5'-6"	34
* EPOXY COATED REINFORCING STEEL				LBS.	1,296
CLASS AA CONCRETE				C. Y.	7.5
CONCRETE BARRIER RAIL				55.60 LIN. FT.	

**NOTES**

THE COST OF THE BARRIER RAIL ON THE APPROACH SLAB SHALL BE INCLUDED IN THE LINEAR FOOT CONTRACT PRICE BID FOR "CONCRETE BARRIER RAIL".

THE BARRIER RAIL ON EACH APPROACH SLAB SHALL NOT BE CAST UNTIL ALL APPROACH SLAB CONCRETE HAS BEEN CAST AND HAS REACHED A MINIMUM COMPRESSIVE STRENGTH OF 3,000 PSI.

ALL REINFORCING STEEL IN BARRIER RAILS SHALL BE EPOXY COATED.



PROJECT NO. HB-0004

HAYWOOD COUNTY

STATION: 254+73.75 -L-

SHEET 2 OF 2

ASSEMBLED BY : D. HODGE	DATE : 2/23
CHECKED BY : J. DILWORTH	DATE : 9/23
DRAWN BY : FCJ 11/88	REV. 6/13 MAA/GM
CHECKED BY : ARB 11/88	REV. 12/17 MAA/THC
	REV. 5/18 MAA/THC

**TEMPORARY BERM AND SLOPE DRAIN DETAILS**

(TO BE USED WHEN SHOULDER BERM GUTTER IS REQUIRED)

ENGINEER OF RECORD  
1/19/2024

**NORTH CAROLINA PROFESSIONAL SEAL 37400**

ENGINEER  
GREGORY M. GILLIAND

Designed by  
**Gregory M. Gilliland**  
ETHERILL ENGINEERING

1223 Jones Franklin Rd.  
Raleigh, N.C. 27606  
Bus: 919 851 8077  
Fax: 919 851 8107  
LICENSE NO. F-0377

STATE OF NORTH CAROLINA  
DEPARTMENT OF TRANSPORTATION  
RALEIGH

STANDARD  
BRIDGE APPROACH  
SLAB DETAILS  
(RIGHT LANE)

REVISIONS					
NO.	BY:	DATE:	NO.	BY:	DATE:
1			3		
2			4		

SHEET NO. S2-29

TOTAL SHEETS 58

DOCUMENT NOT CONSIDERED FINAL UNLESS ALL SIGNATURES COMPLETED