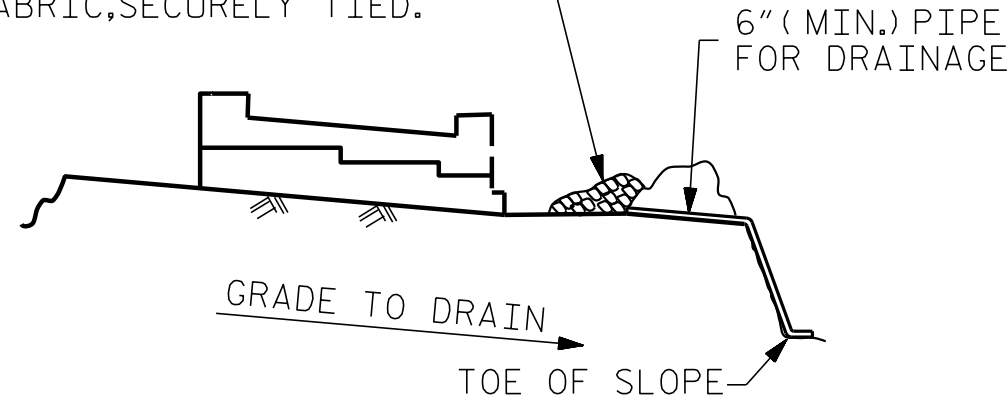


MINIMUM OF 3- ONE CUBIC FOOT BAGS OF #78M STONE. BAGS SHALL BE OF POROUS FABRIC, SECURELY TIED.

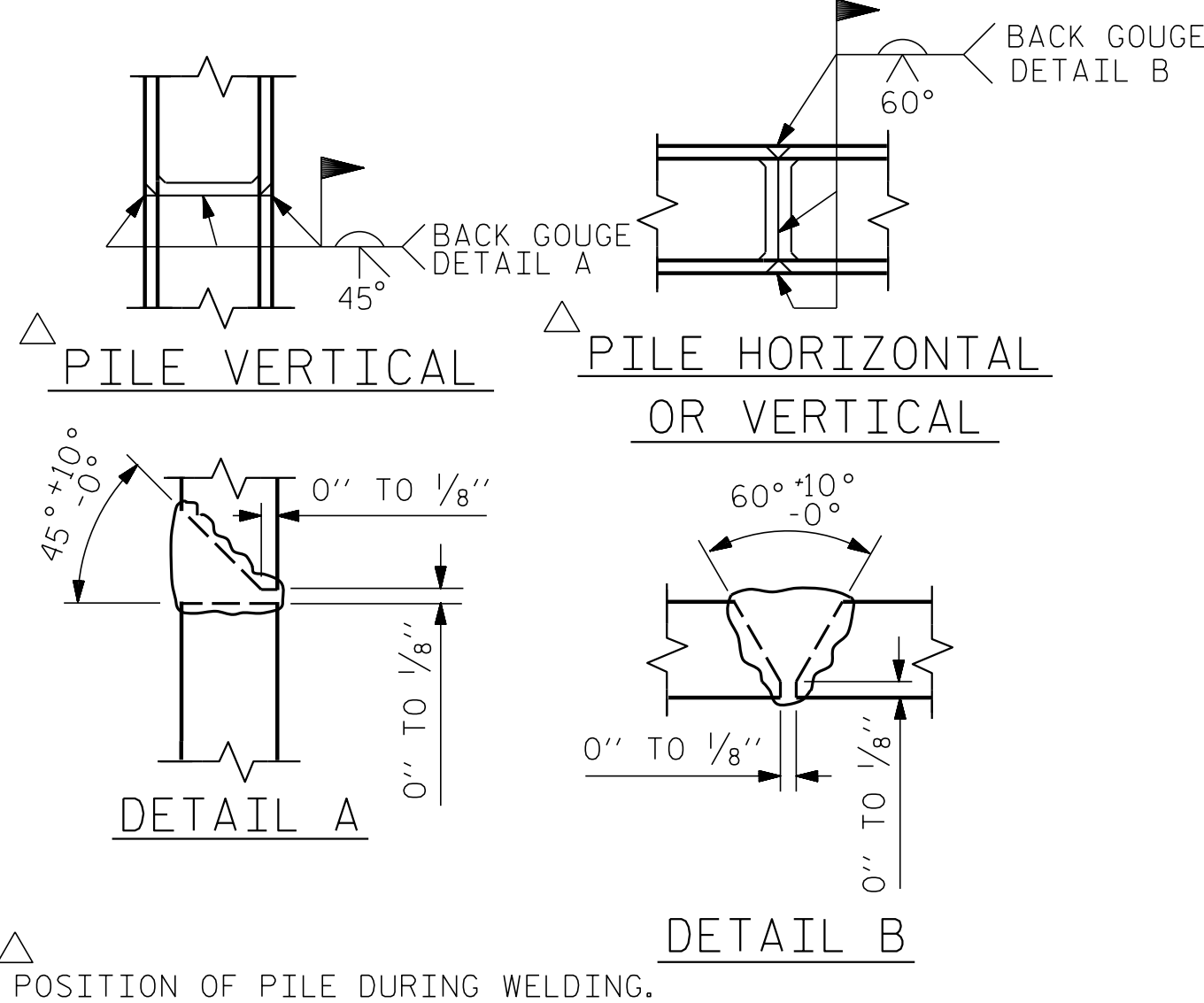


BAGGED STONE AND PIPE SHALL BE PLACED IMMEDIATELY AFTER COMPLETION OF END BENT EXCAVATION. PIPE MAY BE EITHER CONCRETE, CORRUGATED STEEL, CORRUGATED ALUMINUM ALLOY, OR CORRUGATED PLASTIC. PERFORATED PIPE WILL NOT BE ALLOWED.

BAGGED STONE SHALL REMAIN IN PLACE UNTIL THE ENGINEER DIRECTS THAT IT BE REMOVED. THE CONTRACTOR SHALL REMOVE AND DISPOSE OF SILT ACCUMULATIONS AT BAGGED STONE WHEN SO DIRECTED BY THE ENGINEER. BAGS SHALL BE REMOVED AND REPLACED WHENEVER THE ENGINEER DETERMINES THAT THEY HAVE DETERIORATED AND LOST THEIR EFFECTIVENESS.

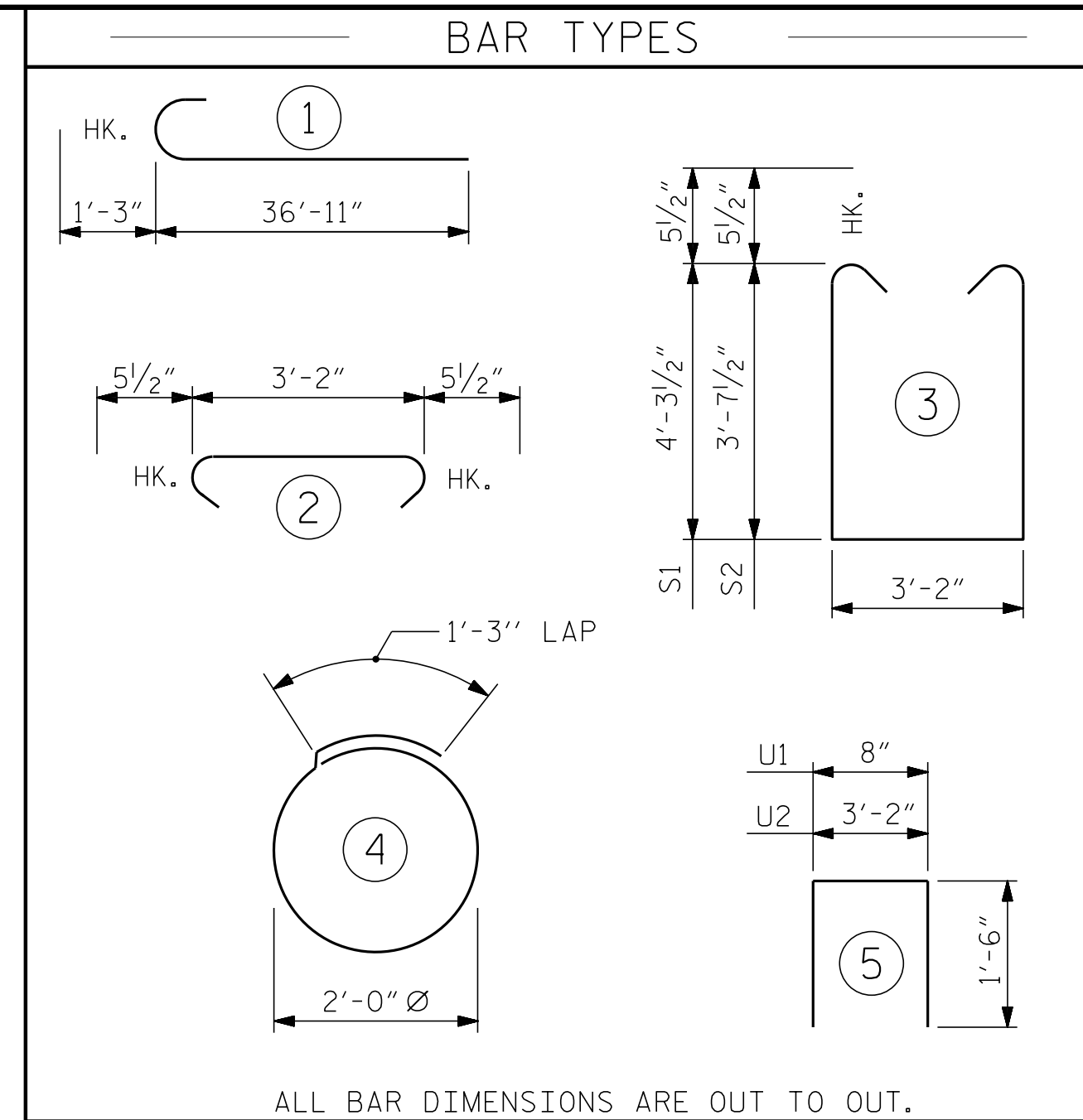
NO SEPARATE PAYMENT WILL BE MADE FOR THIS WORK AND THE ENTIRE COST OF THIS WORK SHALL BE INCLUDED IN THE UNIT CONTRACT PRICE BID FOR THE SEVERAL PAY ITEMS.

TEMPORARY DRAINAGE AT END BENT



POSITION OF PILE DURING WELDING.

PILE SPLICE DETAILS



ALL BAR DIMENSIONS ARE OUT TO OUT.

BILL OF MATERIAL

END BENT No. 2

STAGE I

BAR NO.	NO.	SIZE	TYPE	LENGTH	WEIGHT
B1	8	#9		38'-2"	1,038
B2	8	#9	STR	41'-11"	1,140
B3	12	#5	STR	39'-10"	499
B4	8	#4	STR	38'-4"	205
B5	2	#5	STR	34'-8"	72
B6	19	#4	STR	3'-2"	40
B7	8	#4	STR	4'-11"	26
B8	12	#4	STR	9'-4"	75
K1	12	#4	STR	39'-10"	319
K2	16	#4	STR	5'-9"	61
K3	6	#4	STR	6'-7"	26
S1	64	#5	3	12'-8"	846
S2	59	#5	3	11'-4"	697
S3	123	#5	2	4'-1"	524
S4	32	#4	4	7'-7"	162
U1	64	#4	5	3'-8"	157
U2	29	#4	5	6'-2"	119
V1	128	#5	STR	6'-6"	868
V2	14	#5	STR	9'-3"	135
V3	14	#5	STR	7'-11"	116

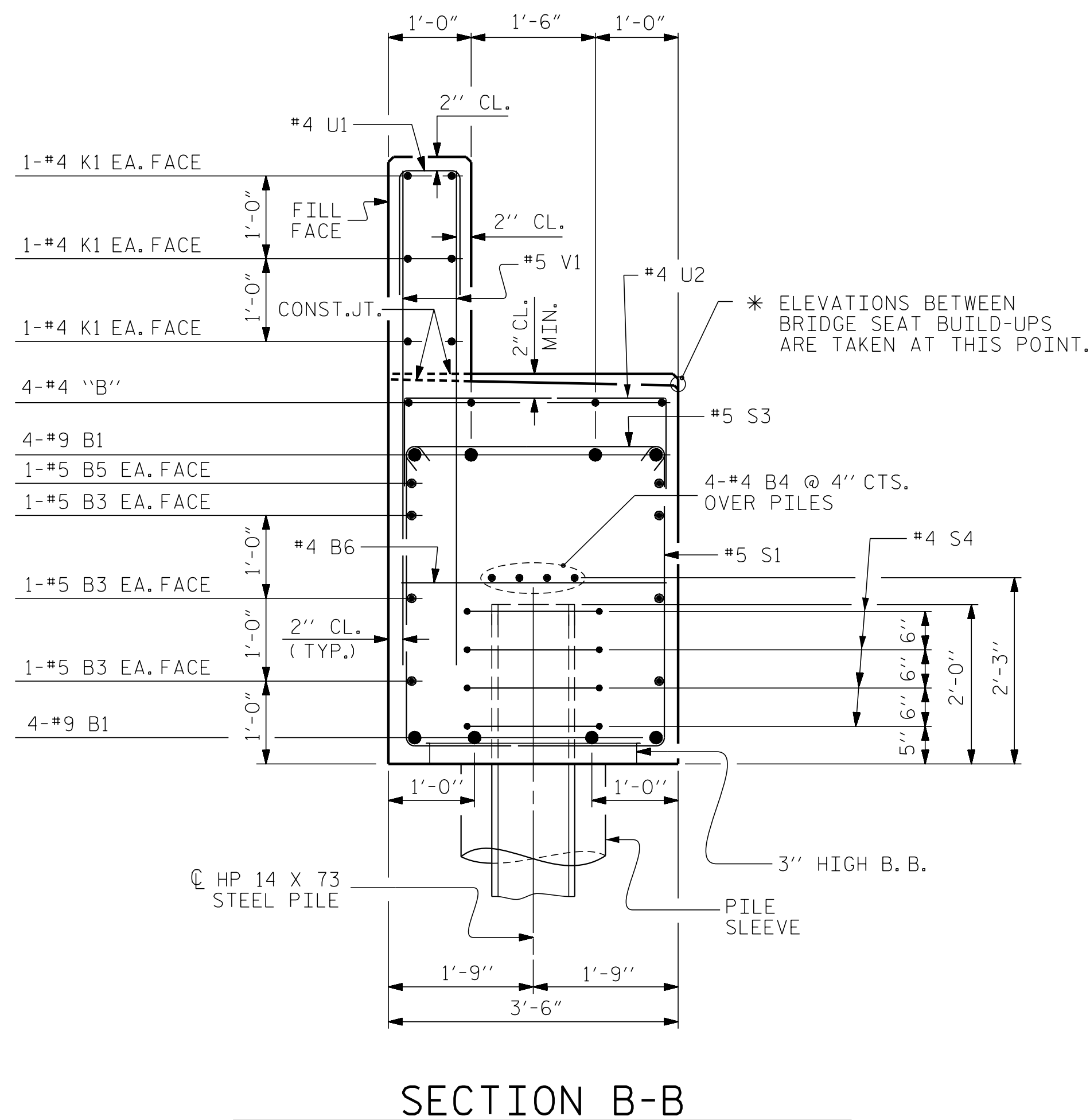
REINFORCING STEEL 7,125 LBS.

CLASS A CONCRETE BREAKDOWN

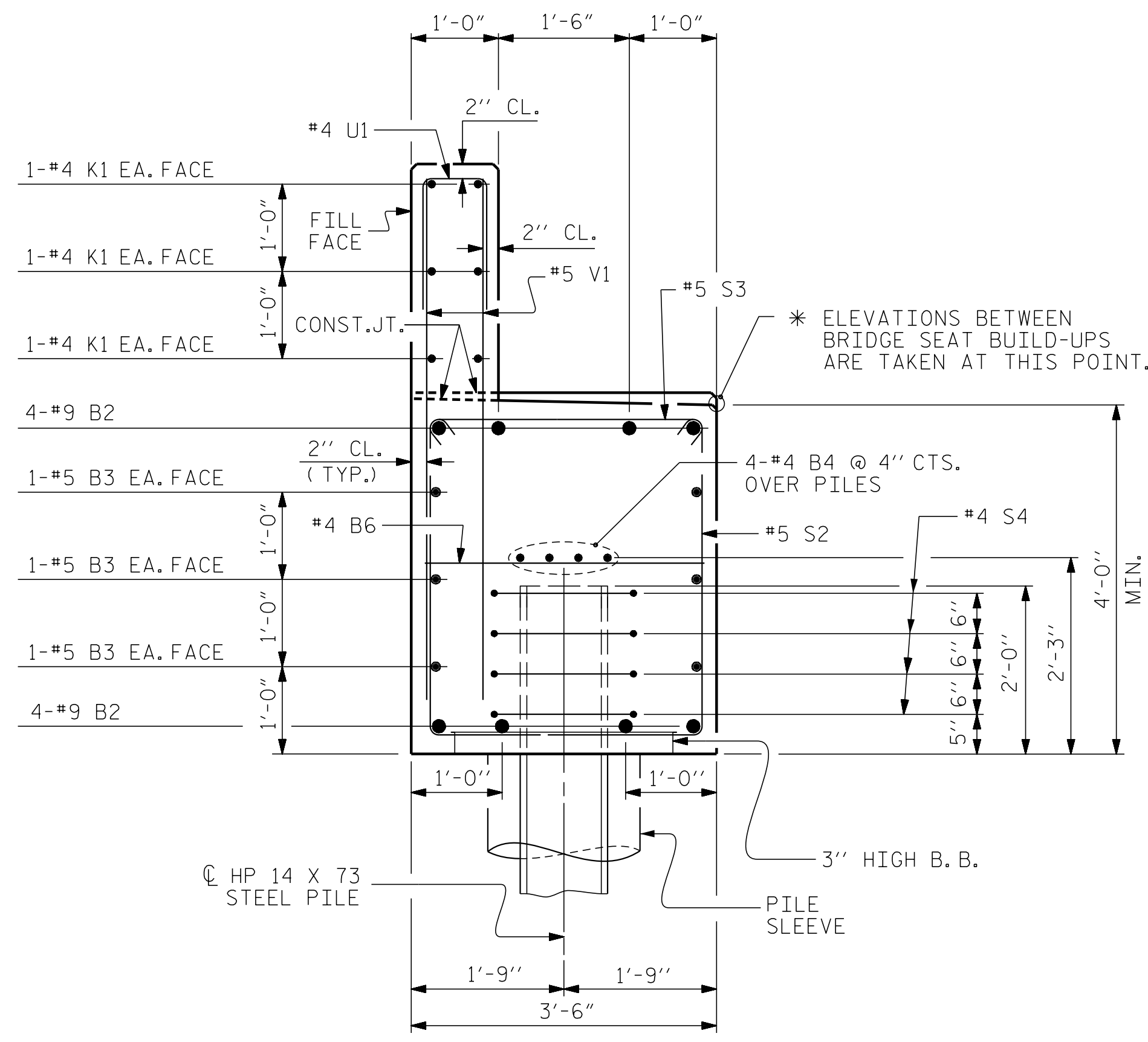
POUR #1 CAP AND LOWER PORTION OF EARWALL 44.5 C.Y.

POUR #2 UPPER PORTION OF EARWALL AND BACKWALL 8.8 C.Y.

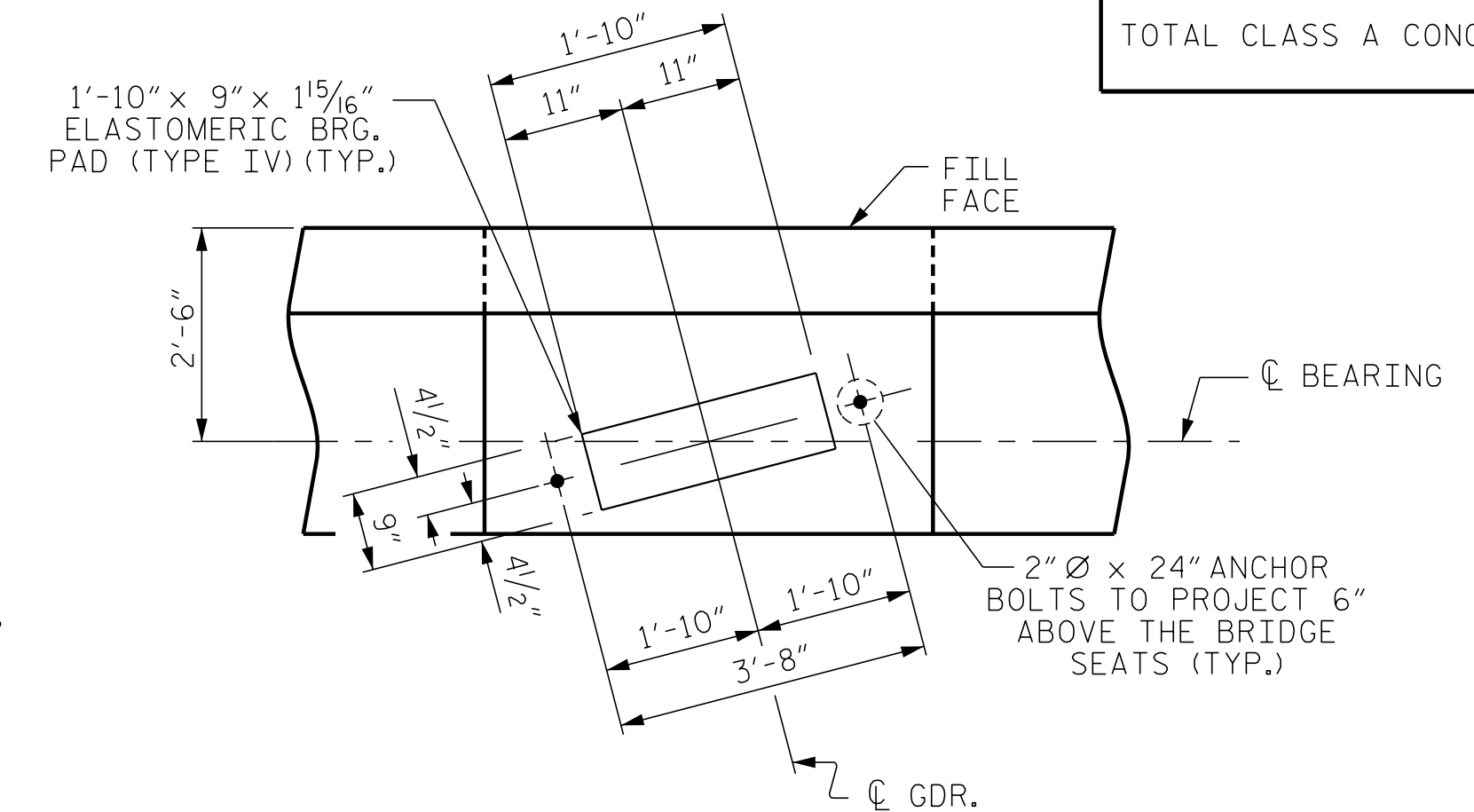
TOTAL CLASS A CONCRETE 53.3 C.Y.



SECTION B-B



SECTION A-A



DETAIL 'A' (TYP. EA. GIRDER)

PROJECT NO. HB-0004
 HAYWOOD COUNTY
 STATION: 254+73.75 -L-

SHEET 3 OF 3

ENGINEER OF RECORD
 1/19/2024

 Gregory M. Gilliland
 GREGORY M. GILLILAND
 ENGINEERING

STATE OF NORTH CAROLINA
 DEPARTMENT OF TRANSPORTATION
 RALEIGH
 SUBSTRUCTURE
 END BENT No. 2
 (LEFT LANE)
 (STAGE I)

REVISIONS

NO.	BY:	DATE:	NO.	BY:	DATE:	SHEET NO.
1			3			S1-26
2			4			TOTAL SHEETS 58

DOCUMENT NOT CONSIDERED FINAL
 UNLESS ALL SIGNATURES COMPLETED

P:\2023\2312401_LHB-0004_Structures\03\NHB-0004 (LEFT LANE)\HB0004-LEFT-EB.dgn
 1/18/2024 4:57:55 PM

DRAWN BY: D. HODGE DATE: 8/23
 CHECKED BY: G. GILLAND DATE: 9/23