

HALF SECTION - END BENT DIAPHRAGM

HALF SECTION - INTERMEDIATE DIAPHRAGM

TYPICAL SECTION

\* RADIAL DIMENSION

**NOTES**

PROVIDE 1 1/4" HIGH BEAM BOLSTERS UPPER AT 4'-0" CTS. ATOP THE METAL STAY-IN-PLACE FORMS TO SUPPORT THE BOTTOM MAT OF 'A' BARS. WHEN USING REMOVABLE FORMS, PROVIDE CONTINUOUS HIGH CHAIRS FOR METAL DECK (C.H.C.M.) @ 4'-0" CTS. WITH A HEIGHT TO SUPPORT THE BOTTOM MAT OF 'A' BARS A CLEAR DISTANCE OF 2 1/2" ABOVE THE TOP OF THE REMOVABLE FORM.

LONGITUDINAL STEEL MAY BE SHIFTED SLIGHTLY, AS NECESSARY, TO AVOID INTERFERENCE WITH STIRRUPS IN PRESTRESSED CONCRETE GIRDERS.

BARRIER RAIL SHALL NOT BE CAST UNTIL ALL SLAB CONCRETE HAS BEEN CAST AND HAS REACHED A MINIMUM COMPRESSIVE STRENGTH OF 3,000 PSI.

#5 G1 BAR MAY BE SHIFTED SLIGHTLY AS NECESSARY TO CLEAR REINFORCING STEEL AND STIRRUPS.

GIRDERS ARE PARALLEL TO THE LONG CHORD OF -L-.

CONCRETE BARRIER RAIL FOR REINFORCING STEEL AND DETAILS; SEE "CONCRETE BARRIER RAIL" SHEET (TYP.)

STAY-IN-PLACE METAL FORMS (TYP.)

CONST. JOINT (LEVEL) (TYP.)

VARIES FROM MIN. 3'-0 1/16" TO MAX. 3'-1 1/2"

2-1' Δ DRIP GROOVES (TYP. EA. SIDE)

1'-0" (TYP.)

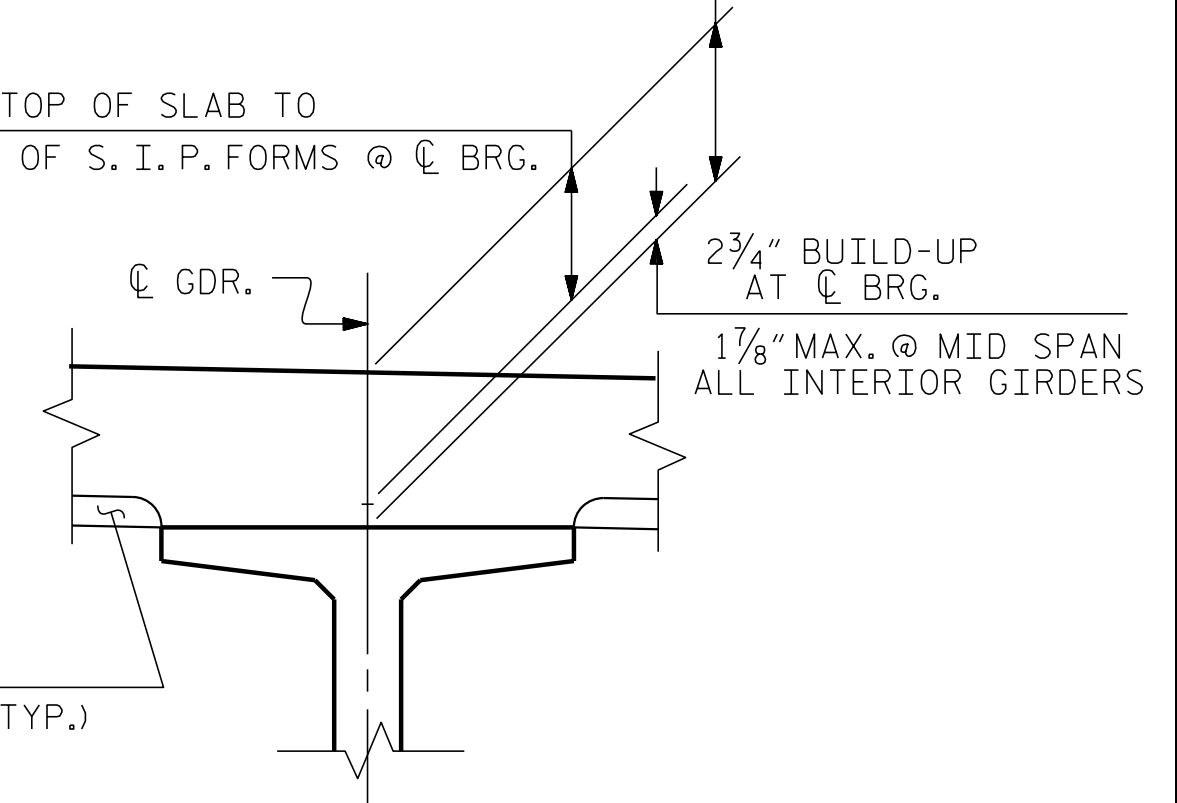
2 1/2" HIGH B.B.

10 3/4" TOP OF SLAB TO TOP OF PREST. CONCR. GDR. AT CL BRG.

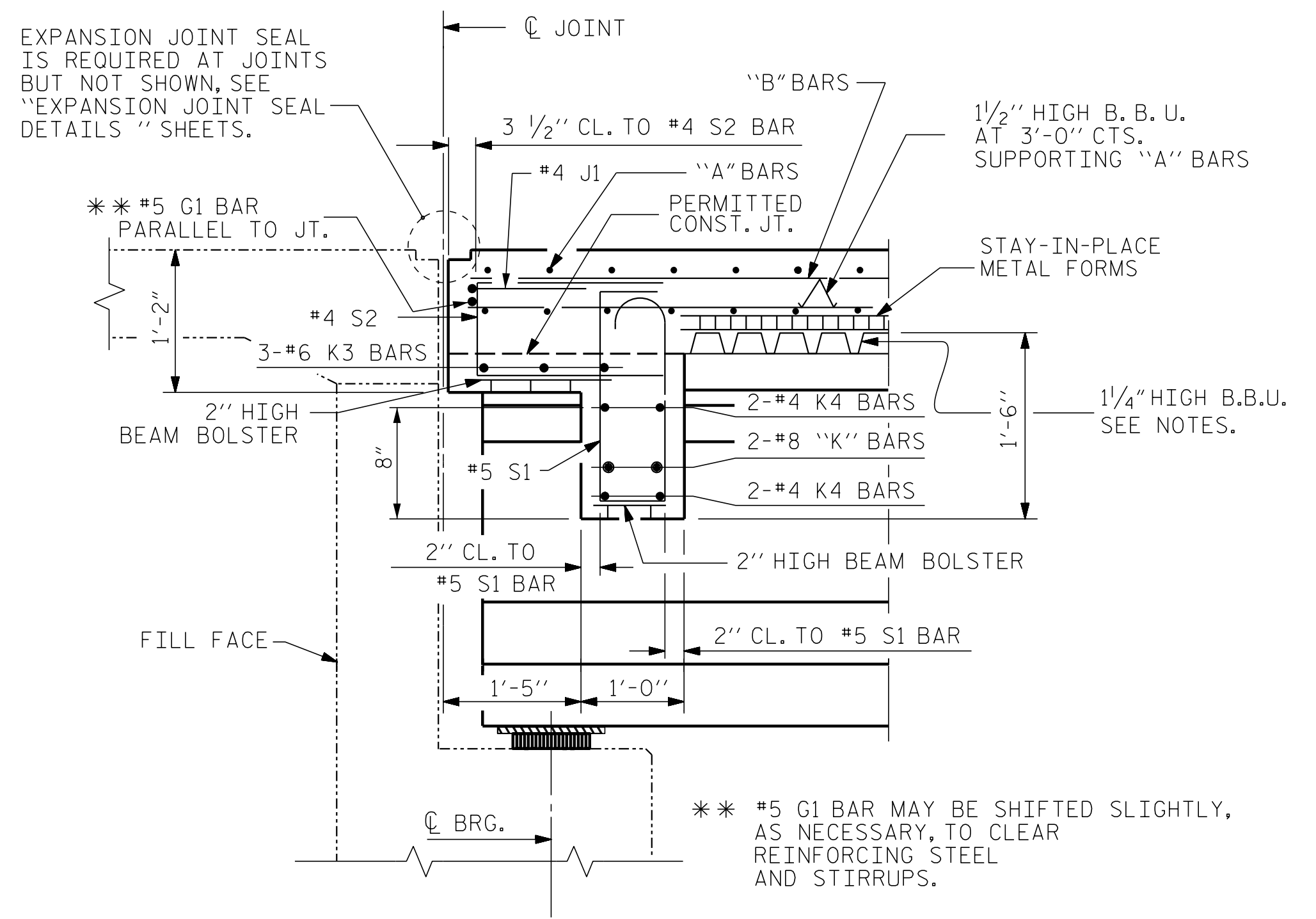
8" TOP OF SLAB TO TOP OF S. I. P. FORMS @ CL BRG.

2 3/4" BUILD-UP AT CL BRG.

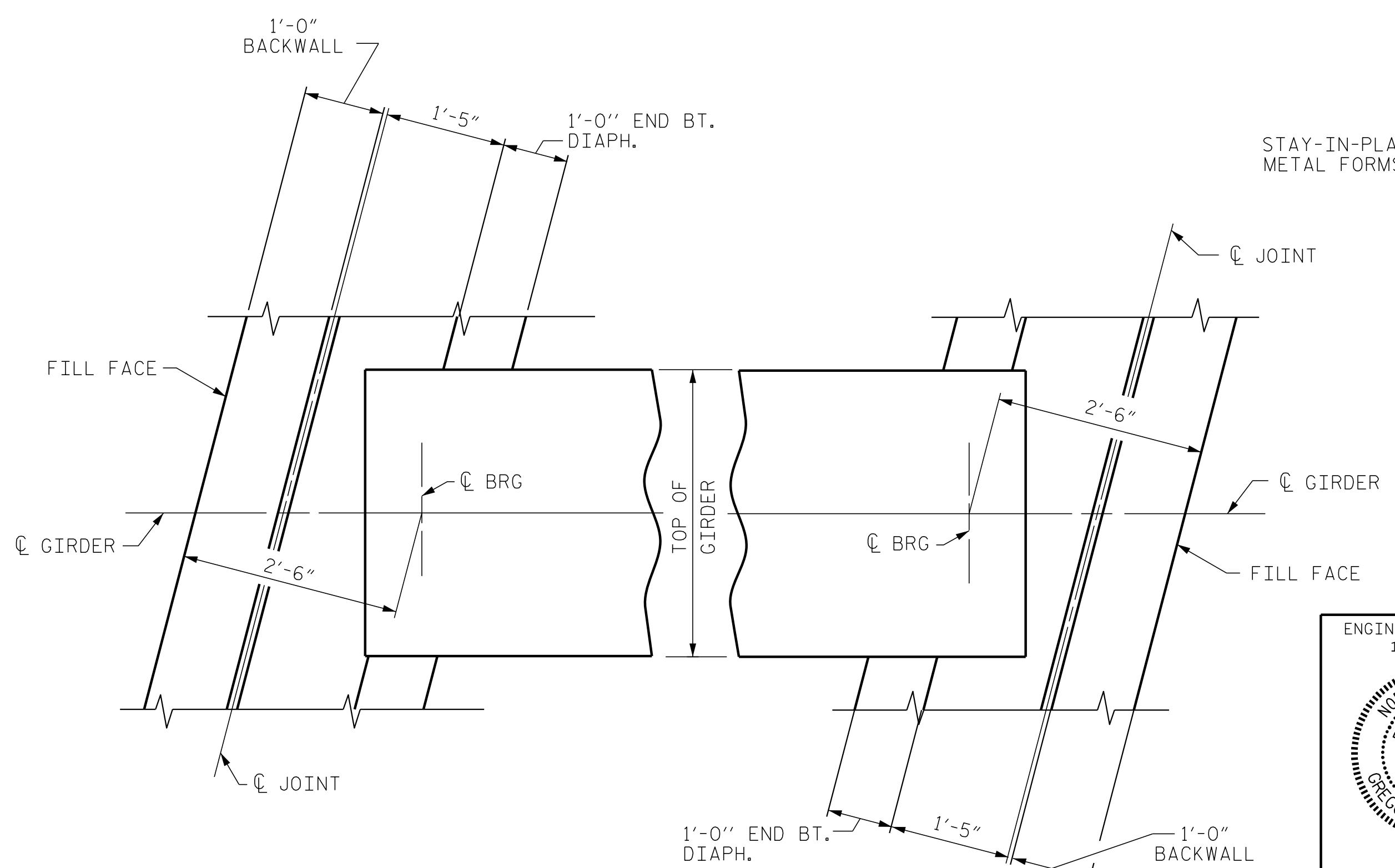
1 1/8" MAX. @ MID SPAN ALL INTERIOR GIRDERS



DETAIL "A"  
(TYP. EA. GIRDER)



SECTION THRU END BENT DIAPHRAGM



END BENT No. 1 DIAPHRAGM

END BENT No. 2 DIAPHRAGM

PLAN

PROJECT NO. HB-0004  
HAYWOOD COUNTY  
 STATION: 254+73.75 -L-

ENGINEER OF RECORD  
 1/19/2024

DESIGNED BY:  
 Gregory M. Gilliland  
 WETHERILL ENGINEERING

1223 Jones Franklin Rd.  
 Raleigh, N.C. 27606  
 Bus: 919 851 8077  
 Fax: 919 851 8107  
 LICENSE NO. F-0377

STATE OF NORTH CAROLINA DEPARTMENT OF TRANSPORTATION RALEIGH					
SUPERSTRUCTURE TYPICAL SECTION (LEFT LANE)					
REVISIONS					
NO.	BY:	DATE:	NO.	BY:	DATE:
1			3		
2			4		
SHEET NO. S1-08					TOTAL SHEETS 58

DRAWN BY: D. HODGE DATE: 2/23  
 CHECKED BY: G. GILLAND DATE: 7/23

DOCUMENT NOT CONSIDERED FINAL  
 UNLESS ALL SIGNATURES COMPLETED

PA:2023\23124\01\_HB-0004\_Structures\03\HB-0004 (LEFT LANE)\HB0004-LEFT-TS.dgn  
 1/18/2024 4:40:00 PM