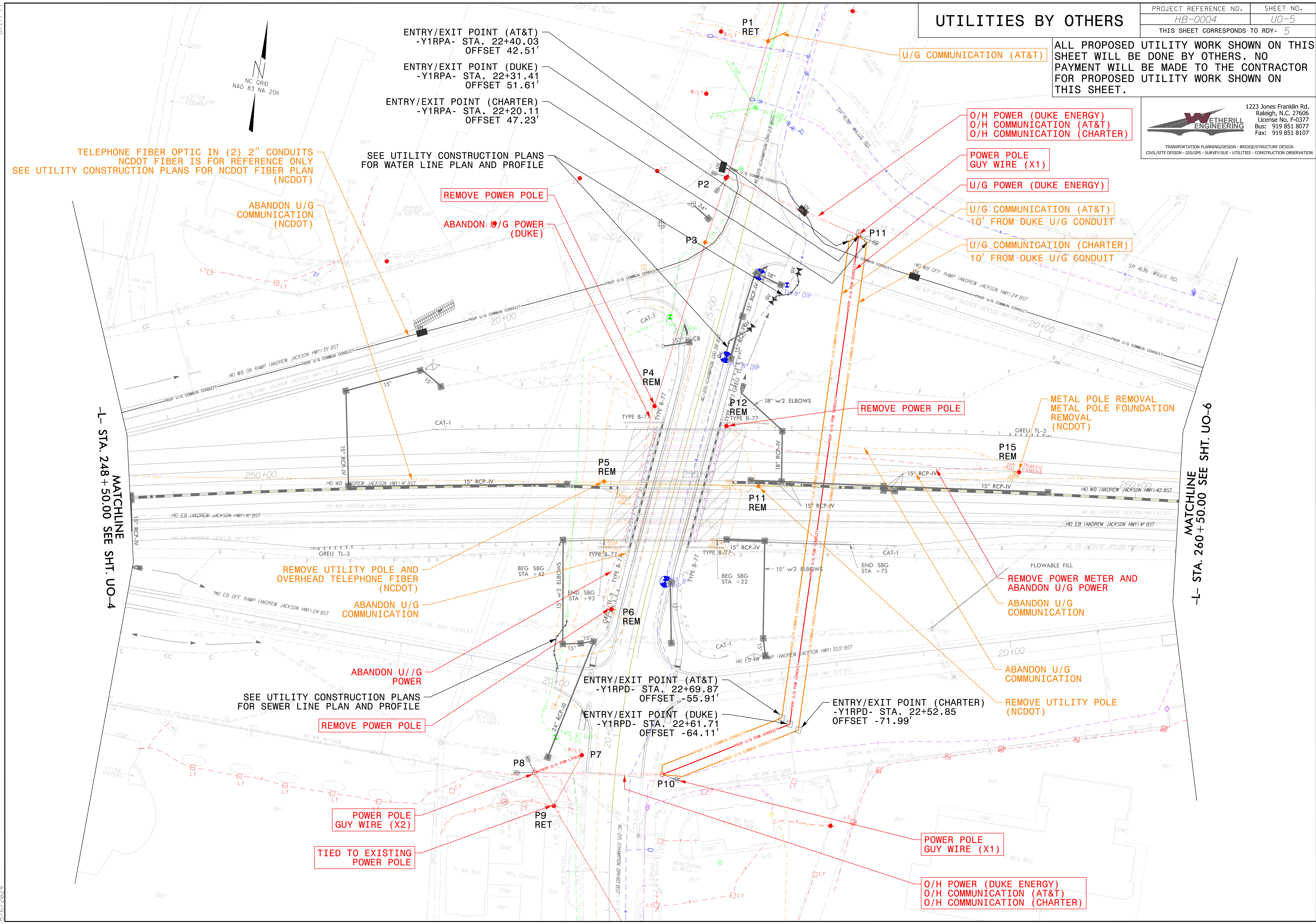
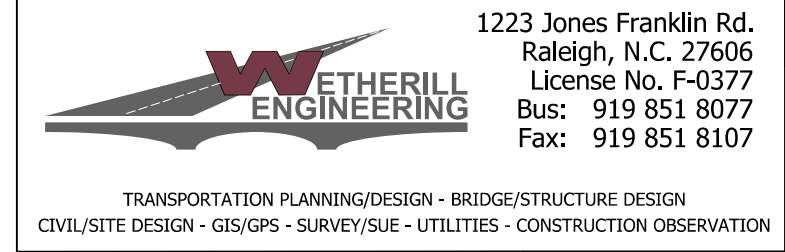


UTILITIES BY OTHERS

ALL PROPOSED UTILITY WORK SHOWN ON THIS SHEET WILL BE DONE BY OTHERS. NO PAYMENT WILL BE MADE TO THE CONTRACTOR FOR PROPOSED UTILITY WORK SHOWN ON THIS SHEET.



ENTRY/EXIT POINT (AT&T)
-Y1RPA- STA. 22+40.03
OFFSET 42.51'

ENTRY/EXIT POINT (DUKE)
-Y1RPA- STA. 22+31.41
OFFSET 51.61'

ENTRY/EXIT POINT (CHARTER)
-Y1RPA- STA. 22+20.11
OFFSET 47.23'

TELEPHONE FIBER OPTIC IN (2) 2" CONDUITS
NCDOT FIBER IS FOR REFERENCE ONLY
SEE UTILITY CONSTRUCTION PLANS FOR NCDOT FIBER PLAN (NCDOT)

SEE UTILITY CONSTRUCTION PLANS FOR WATER LINE PLAN AND PROFILE

U/G COMMUNICATION (AT&T)

O/H POWER (DUKE ENERGY)
O/H COMMUNICATION (AT&T)
O/H COMMUNICATION (CHARTER)

POWER POLE
GUY WIRE (X1)

U/G POWER (DUKE ENERGY)

U/G COMMUNICATION (AT&T)
10' FROM DUKE U/G CONDUIT

U/G COMMUNICATION (CHARTER)
10' FROM DUKE U/G CONDUIT

REMOVE POWER POLE

ABANDON U/G POWER (DUKE)

REMOVE POWER POLE

METAL POLE REMOVAL
METAL POLE FOUNDATION
REMOVAL (NCDOT)

REMOVE UTILITY POLE AND
OVERHEAD TELEPHONE FIBER
(NCDOT)

ABANDON U/G
COMMUNICATION

ABANDON U/G
POWER

SEE UTILITY CONSTRUCTION PLANS
FOR SEWER LINE PLAN AND PROFILE

REMOVE POWER POLE

REMOVE POWER METER AND
ABANDON U/G POWER

ABANDON U/G
COMMUNICATION

ABANDON U/G
COMMUNICATION

REMOVE UTILITY POLE
(NCDOT)

POWER POLE
GUY WIRE (X2)

TIED TO EXISTING
POWER POLE

POWER POLE
GUY WIRE (X1)

O/H POWER (DUKE ENERGY)
O/H COMMUNICATION (AT&T)
O/H COMMUNICATION (CHARTER)

MATCHLINE
-L- STA. 248+50.00 SEE SHT. UO-4

MATCHLINE
-L- STA. 260+50.00 SEE SHT. UO-6

8/17/99
2:00:41PM
6/15/2023 3:23:24.01 HB-0004\Utilities\Engineering\UB0\Proj\HB0004_ut_rdy5_U0-5.dgn
5/16/2024