

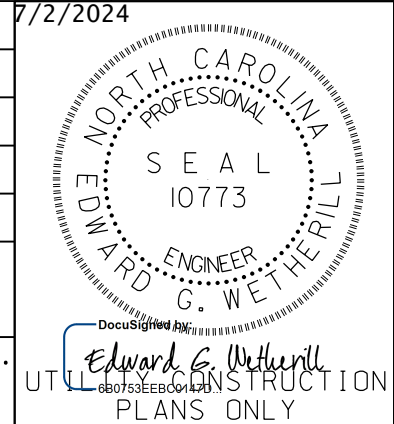
8/17/99

NO WATER OR SEWER FACILITIES ON THIS SHEET

WETHERILL ENGINEERING
 1223 Jones Franklin Rd.
 Raleigh, N.C. 27606
 License No. F-0377
 Bus: 919 851 8077
 Fax: 919 851 8107

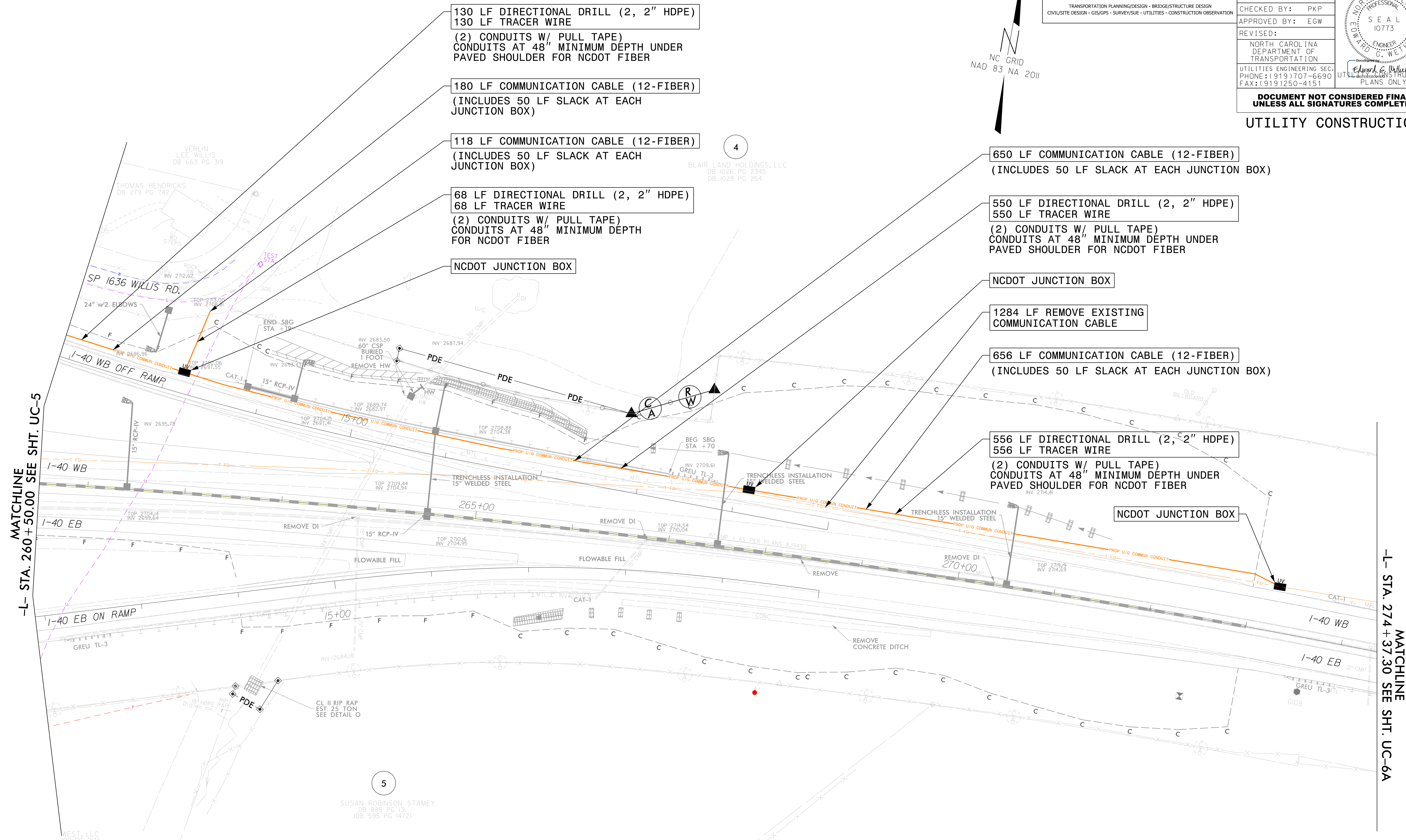
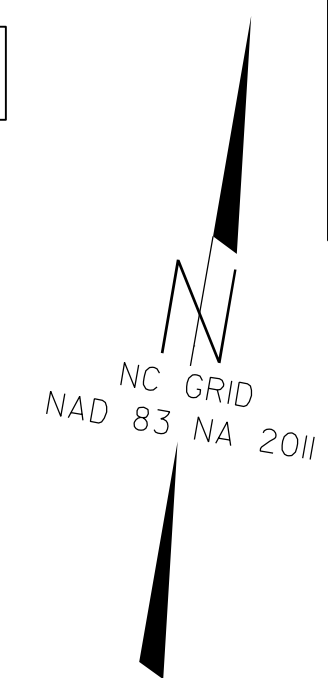
TRANSPORTATION PLANNING/DESIGN - BRIDGE/STRUCTURE DESIGN
 CIVIL/SITE DESIGN - GIS/GPS - SURVEY/SUE - UTILITIES - CONSTRUCTION OBSERVATION

PROJECT REFERENCE NO.	HB-0004	SHEET NO.	UC-6
DESIGNED BY:	PKP	DATE	7/2/2024
DRAWN BY:	JDS		
CHECKED BY:	PKP		
APPROVED BY:	EGW		
REVISED:			
NORTH CAROLINA DEPARTMENT OF TRANSPORTATION			
UTILITIES ENGINEERING SEC. PHONE: (919) 707-6690 FAX: (919) 250-4151			



DOCUMENT NOT CONSIDERED FINAL UNLESS ALL SIGNATURES COMPLETED

UTILITY CONSTRUCTION



130 LF DIRECTIONAL DRILL (2, 2" HDPE)
 130 LF TRACER WIRE
 (2) CONDUITS W/ PULL TAPE
 CONDUITS AT 48" MINIMUM DEPTH UNDER
 PAVED SHOULDER FOR NCDOT FIBER

180 LF COMMUNICATION CABLE (12-FIBER)
 (INCLUDES 50 LF SLACK AT EACH
 JUNCTION BOX)

118 LF COMMUNICATION CABLE (12-FIBER)
 (INCLUDES 50 LF SLACK AT EACH
 JUNCTION BOX)

68 LF DIRECTIONAL DRILL (2, 2" HDPE)
 68 LF TRACER WIRE
 (2) CONDUITS W/ PULL TAPE
 CONDUITS AT 48" MINIMUM DEPTH
 FOR NCDOT FIBER

NCDOT JUNCTION BOX

650 LF COMMUNICATION CABLE (12-FIBER)
 (INCLUDES 50 LF SLACK AT EACH JUNCTION BOX)

550 LF DIRECTIONAL DRILL (2, 2" HDPE)
 550 LF TRACER WIRE
 (2) CONDUITS W/ PULL TAPE
 CONDUITS AT 48" MINIMUM DEPTH UNDER
 PAVED SHOULDER FOR NCDOT FIBER

NCDOT JUNCTION BOX

1284 LF REMOVE EXISTING
 COMMUNICATION CABLE

656 LF COMMUNICATION CABLE (12-FIBER)
 (INCLUDES 50 LF SLACK AT EACH JUNCTION BOX)

556 LF DIRECTIONAL DRILL (2, 2" HDPE)
 556 LF TRACER WIRE
 (2) CONDUITS W/ PULL TAPE
 CONDUITS AT 48" MINIMUM DEPTH UNDER
 PAVED SHOULDER FOR NCDOT FIBER

NCDOT JUNCTION BOX

REVISIONS

10:09:15 AM
 7/2/2024
 C:\Users\jds\OneDrive\Documents\Projects\UC-6\Addendum\HB0004_UT_psh_UC6.dgn

MATCHLINE
 -L- STA. 260+50.00 SEE SHT. UC-5

MATCHLINE
 -L- STA. 274+37.30 SEE SHT. UC-6A

5
 SUSAN ROBINSON STAMEY
 DB 885 PG 131
 (DB 595 PG 1472)

TIRELESSNC, LLC
 DB 925 PG 49