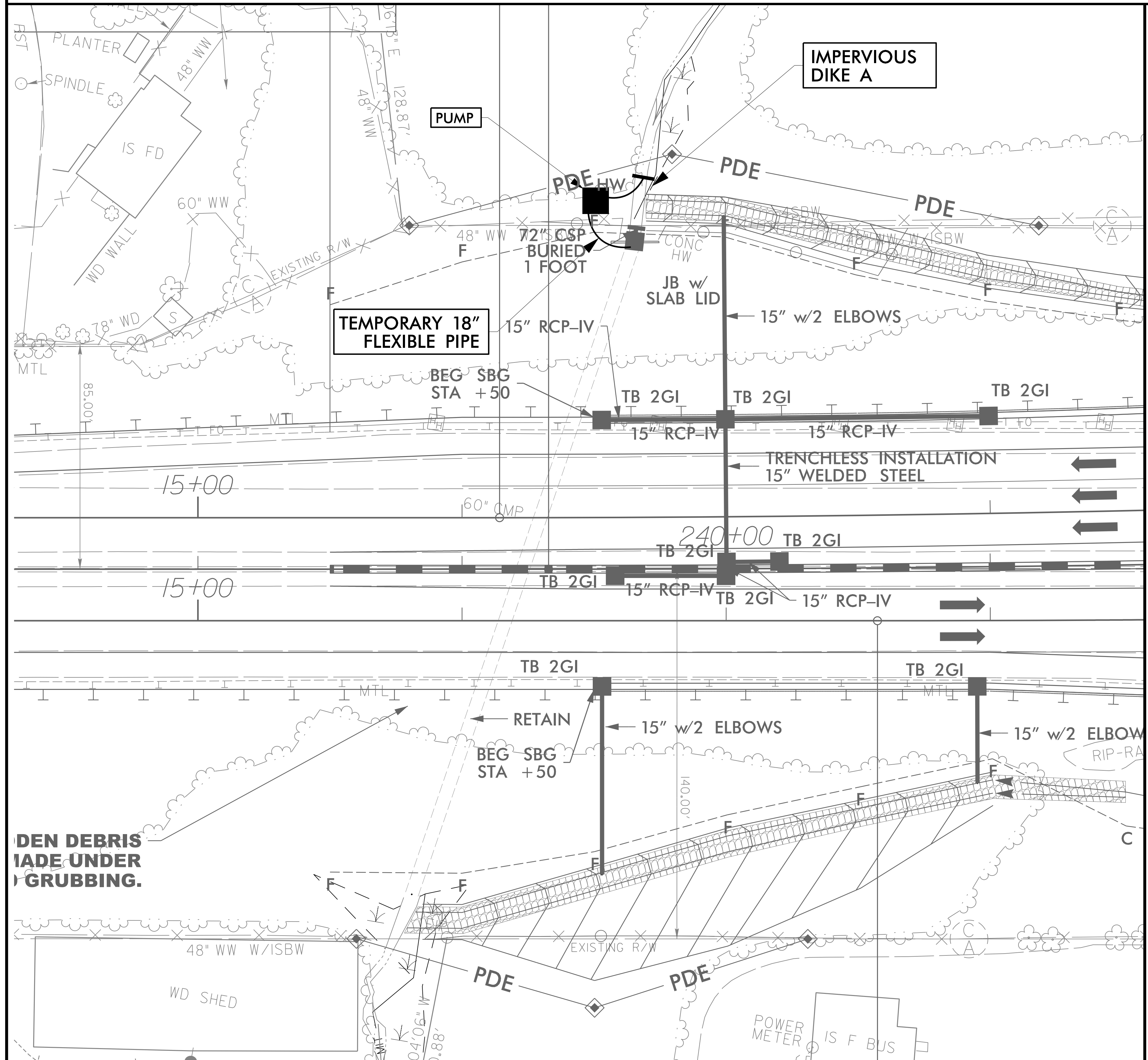


PROJECT REFERENCE NO.	SHEET NO.
HB-0004	EC-4A/CONST.4
RW SHEET NO.	
ROADWAY DESIGN ENGINEER	HYDRAULICS ENGINEER

STA. -L- 239+23 PIPE CONSTRUCTION SEQUENCE



1. UTILIZE SPECIAL STILLING BASIN(S) AS NEEDED DURING PIPE INSTALLATION
2. INSTALL IMPERVIOUS DIKE A AND IMPLEMENT TEMPORARY PUMP-AROUND TO DIVERT FLOW INTO EXISTING 60" CMP
3. COMPLETE 60" CMP EXTENSION AND INSTALL JUNCTION BOX
4. COMPLETE PROPOSED BASE DITCH
5. REMOVE IMPERVIOUS DIKE A AND TEMPORARY PUMP-AROUND
6. REMOVE SPECIAL STILLING BASIN(S)
7. COMPLETE ROADWAY

REMOVE DEBRIS MADE UNDER GRUBBING.