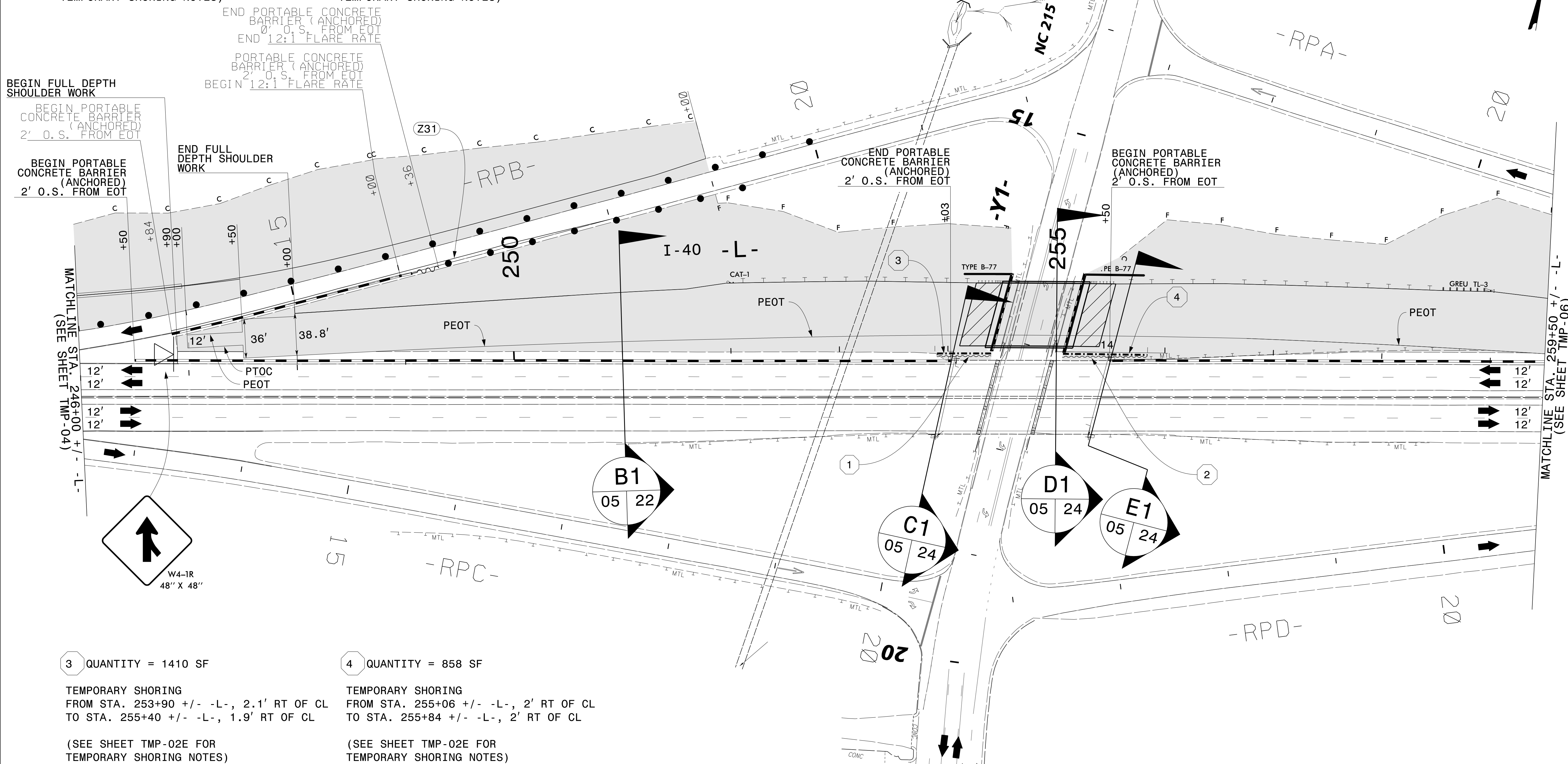


1 QUANTITY = 1095 SF
 TEMPORARY SHORING
 FROM STA. 253+90 +/- -L-, 5' RT OF CL
 TO STA. 255+40 +/- -L-, 4.8' RT OF CL

2 QUANTITY = 418.7 SF
 TEMPORARY SHORING
 FROM STA. 255+05 +/- -L-, 4.1' RT OF CL
 TO STA. 255+84 +/- -L-, 3.3' RT OF CL

(SEE SHEET TMP-02E FOR
 TEMPORARY SHORING NOTES)

(SEE SHEET TMP-02E FOR
 TEMPORARY SHORING NOTES)



3 QUANTITY = 1410 SF
 TEMPORARY SHORING
 FROM STA. 253+90 +/- -L-, 2.1' RT OF CL
 TO STA. 255+40 +/- -L-, 1.9' RT OF CL

(SEE SHEET TMP-02E FOR
 TEMPORARY SHORING NOTES)

4 QUANTITY = 858 SF
 TEMPORARY SHORING
 FROM STA. 255+06 +/- -L-, 2' RT OF CL
 TO STA. 255+84 +/- -L-, 2' RT OF CL

(SEE SHEET TMP-02E FOR
 TEMPORARY SHORING NOTES)

NOTES:
 1) PEOT = PROPOSED EDGE OF TRAVEL
 PTOC = PROPOSED TOP OF CROWN

6/4/2024 P:\2023\23124\Traffic\Traffic Design\2 Plan Design\4 WZTC\HB-0004_TMP-05_PHL.dgn User:AHayes

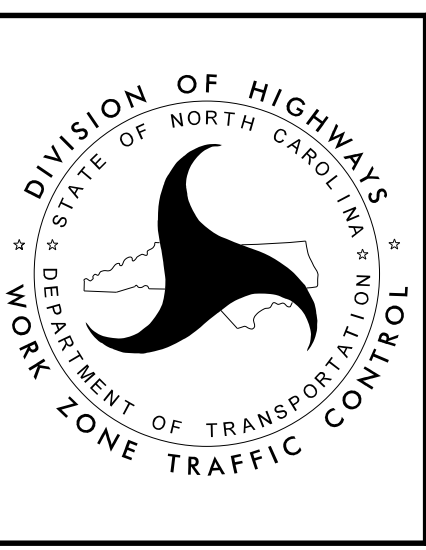
ETHERILL ENGINEERING
 1223 Jones Franklin Rd.
 Raleigh, N.C. 27606
 License No. F-0377
 Bus: 919 851 8077
 Fax: 919 851 8107

TRANSPORTATION PLANNING/DESIGN - BRIDGE/STRUCTURE DESIGN
 CIVIL/SITE DESIGN - GIS/GPS - CONSTRUCTION OBSERVATION

APPROVED: *Lawrence H. Green*
 DATE: 6/4/2024

SEAL
 028137
 ENGINEER
 LAWRENCE H. GREEN

**DOCUMENT NOT CONSIDERED FINAL
 UNLESS ALL SIGNATURES COMPLETED**



PHASE I, STEP 3
 & 4 DETAIL