

5/28/24

# -L- WBL

I-40 WESTBOUND

**WETHERILL ENGINEERING**  
 1223 Jones Franklin Rd.  
 Raleigh, N.C. 27606  
 License No. F-0377  
 Bus: 919 851 8077  
 Fax: 919 851 8107

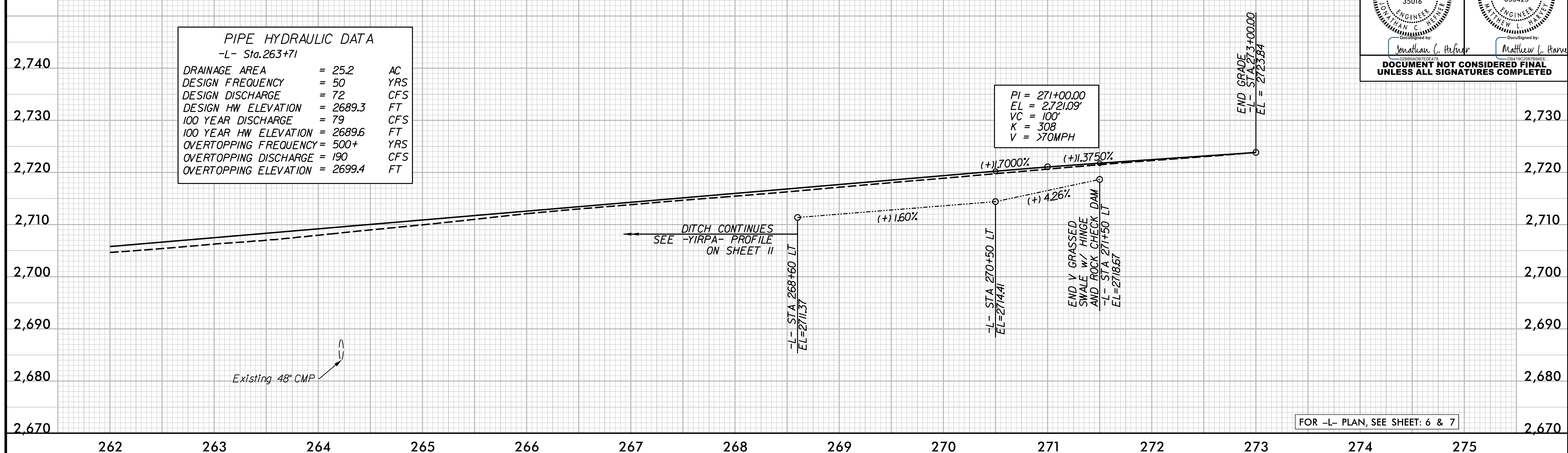
TRANSPORTATION PLANNING/DESIGN • BRIDGE/STRUCTURE DESIGN  
 CIVIL/SITE DESIGN - GIS/GPS - CONSTRUCTION OBSERVATION

PROJECT REFERENCE NO. <b>HB-0004</b>	SHEET NO. <b>11</b>
ROADWAY DESIGN ENGINEER 5/16/2024	HYDRAULICS ENGINEER 5/16/2024
Documented by: <i>Jonathan C. Heffner</i>	Documented by: <i>Matthew L. Harvey</i>

**DOCUMENT NOT CONSIDERED FINAL UNLESS ALL SIGNATURES COMPLETED**

DRAINAGE AREA	= 25.2	AC
DESIGN FREQUENCY	= 50	YRS
DESIGN DISCHARGE	= 72	CFS
DESIGN HW ELEVATION	= 2689.3	FT
100 YEAR DISCHARGE	= 79	CFS
100 YEAR HW ELEVATION	= 2689.6	FT
OVERTOPPING FREQUENCY	= 500+	YRS
OVERTOPPING DISCHARGE	= 190	CFS
OVERTOPPING ELEVATION	= 2699.4	FT

PI = 271+00.00  
 EL = 2721.09'  
 VC = 100'  
 K = 308  
 V = >70MPH

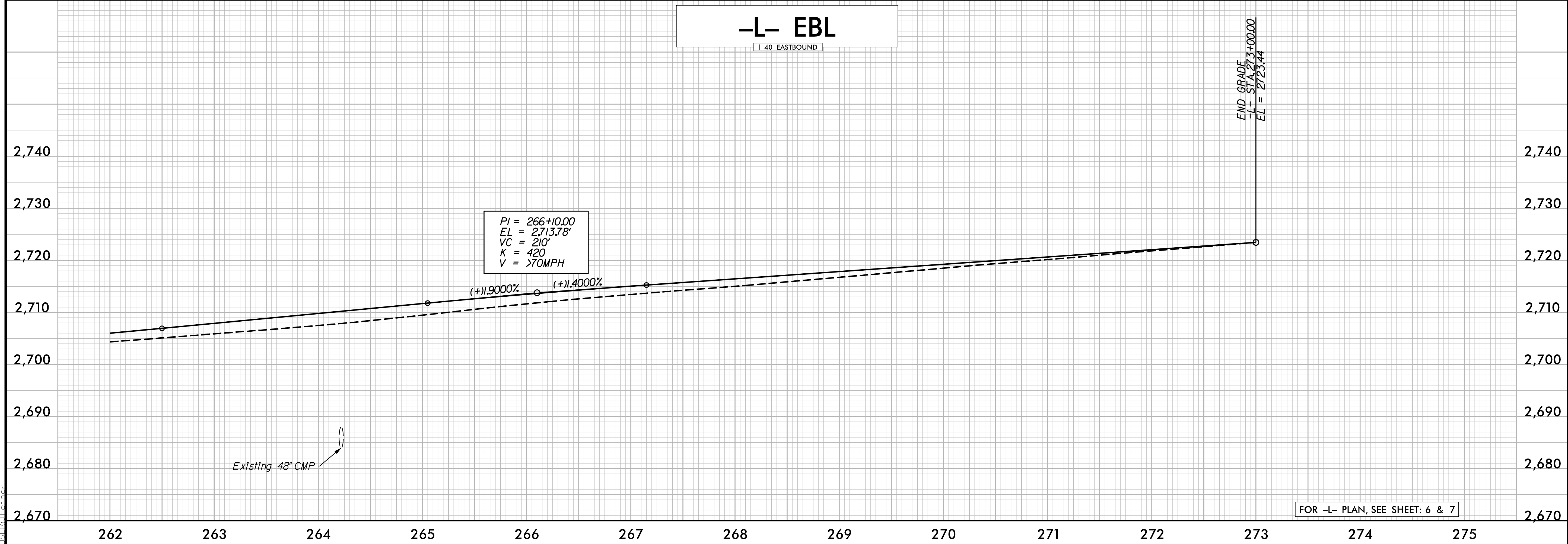


FOR -L- PLAN, SEE SHEET: 6 & 7

# -L- EBL

I-40 EASTBOUND

PI = 266+10.00  
 EL = 2713.78'  
 VC = 210'  
 K = 420  
 V = >70MPH



FOR -L- PLAN, SEE SHEET: 6 & 7

5/16/2024  
HB0004\_rdy\_psh\_11.plt.dgn  
11:51:13 AM