

5/28/2024

PIPE HYDRAULIC DATA
-L- Sta. 239+23

DRAINAGE AREA	= 117	AC
DESIGN FREQUENCY	= 50	YRS
DESIGN DISCHARGE	= 200	CFS
DESIGN HW ELEVATION	= 2638.1	FT
100 YEAR DISCHARGE	= 240	CFS
100 YEAR HW ELEVATION	= 2641.8	FT
OVERTOPPING FREQUENCY	= 500+	YRS
OVERTOPPING DISCHARGE	= 415	CFS
OVERTOPPING ELEVATION	= 2665.0	FT

-WBL-
I-40 WESTBOUND

WETHERILL ENGINEERING
1223 Jones Franklin Rd.
Raleigh, N.C. 27606
License No. F-0377
Bus: 919 851 8077
Fax: 919 851 8107

TRANSPORTATION PLANNING/DESIGN - BRIDGE/STRUCTURE DESIGN
CIVIL/SITE DESIGN - GIS/GPS - CONSTRUCTION OBSERVATION

PROJECT REFERENCE NO. HB-0004	SHEET NO. 8
ROADWAY DESIGN ENGINEER 5/16/2024	HYDRAULICS ENGINEER 5/16/2024
DocuSigned by: <i>Jonathan C. Heifer</i>	DocuSigned by: <i>Matthew L. Harver</i>

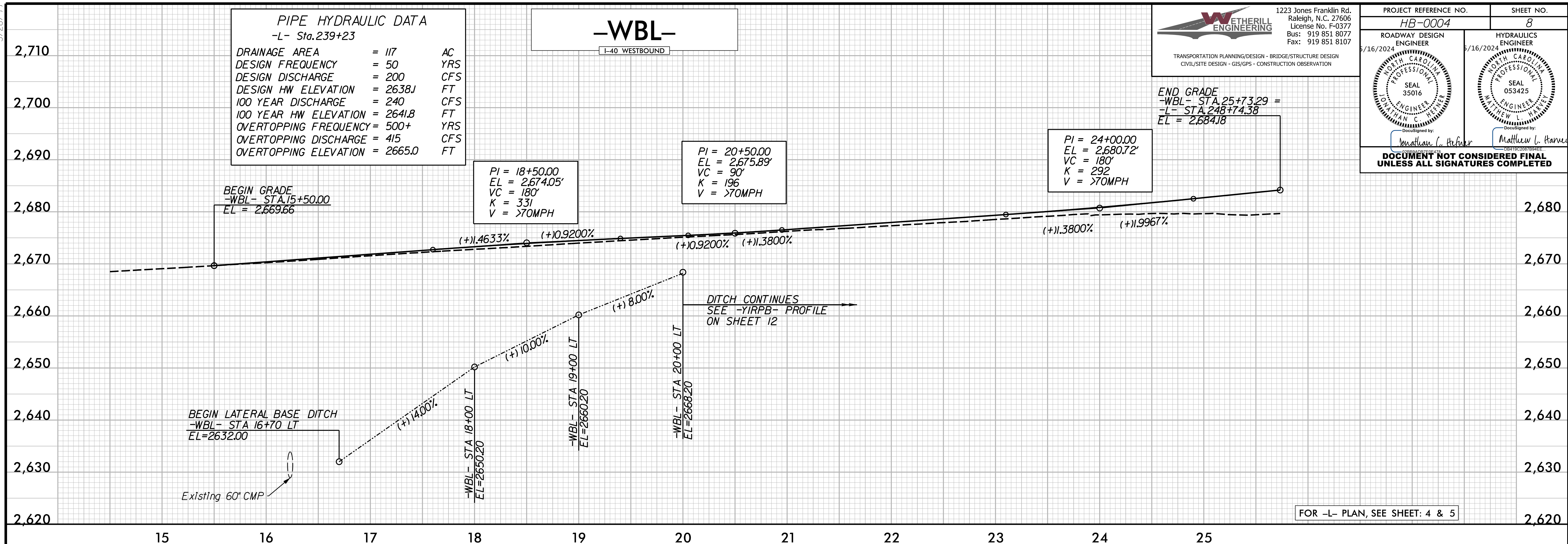
DOCUMENT NOT CONSIDERED FINAL UNLESS ALL SIGNATURES COMPLETED

END GRADE
-WBL- STA. 25+73.29 =
-L- STA. 248+74.38
EL = 2684.18

PI = 24+00.00
EL = 2680.72'
VC = 180'
K = 292
V = >70MPH

PI = 18+50.00
EL = 2674.05'
VC = 180'
K = 331
V = >70MPH

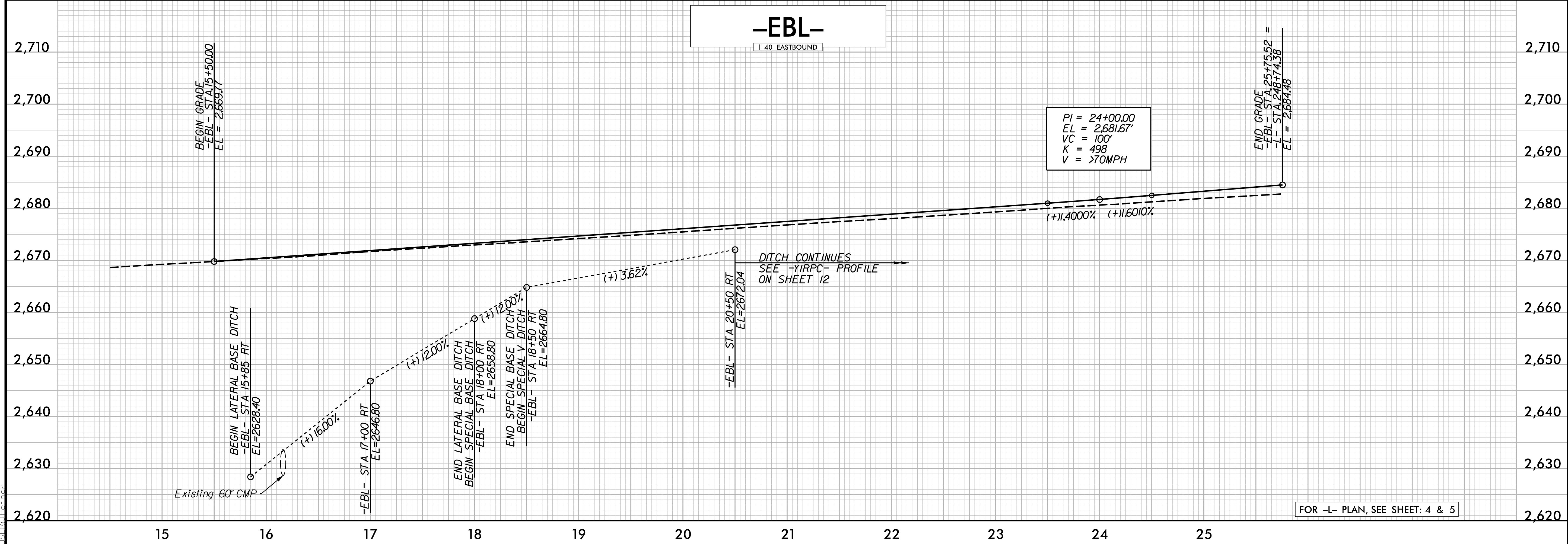
PI = 20+50.00
EL = 2675.89'
VC = 90'
K = 196
V = >70MPH



FOR -L- PLAN, SEE SHEET: 4 & 5

-EBL-
I-40 EASTBOUND

PI = 24+00.00
EL = 2681.67'
VC = 100'
K = 498
V = >70MPH



FOR -L- PLAN, SEE SHEET: 4 & 5

5/16/2024
5/16/2024
5/16/2024