

8/17/2024

-L- CURVE DATA	-YIRPA- CURVE DATA	-YIRPD- CURVE DATA
PI Sta 260+41.79 $\Delta = 12' 27'' 11.2''$ (RT) $D = 0' 32'' 07.7''$ $L = 2,325.62'$ $T = 1,167.41'$ $R = 10,700.00'$ $SE = .03$ $DS > 70$ MPH	PI Sta 15+67.09 $\Delta = 4' 19'' 34.2''$ (RT) $D = 1' 40'' 48.8''$ $L = 257.47'$ $T = 128.80'$ $R = 3,410.00'$ $SE = .05$ $DS = 65$ MPH	PI Sta 17+45.77 $\Delta = 1' 15'' 36.6''$ $D = 1' 40'' 48.8''$ $L = 257.47'$ $T = 128.80'$ $R = 3,410.00'$ $SE = .05$ $DS = 65$ MPH
	PI Sta 12+25.26 $\Delta = 0' 32'' 12.1''$ $\Theta_s = 3' 52'' 18.1''$ $L = 200.00'$ $LT = 125.26'$ $ST = 74.83'$	PI Sta 14+30.12 $\Delta = 6' 19'' 35.8''$ (LT) $D = 3' 52'' 16.8''$ $L = 163.42'$ $T = 81.79'$ $R = 1,480.00'$ $SE = .08$ $DS = 60$ MPH

PROJECT REFERENCE NO. **HB-0004** SHEET NO. **6**

RW SHEET NO.

ROADWAY DESIGN ENGINEER
 5/16/2024
 SEAL 35016
 MATTHEW C. HOFFER

HYDRAULICS ENGINEER
 5/16/2024
 SEAL 053425
 MATTHEW L. HARVEY

WETHERILL ENGINEERING
 1223 JONAS FRANKLIN Rd.
 Raleigh, N.C. 27606
 License No. F-0377
 Bus: 919 851 8077
 Fax: 919 851 8107

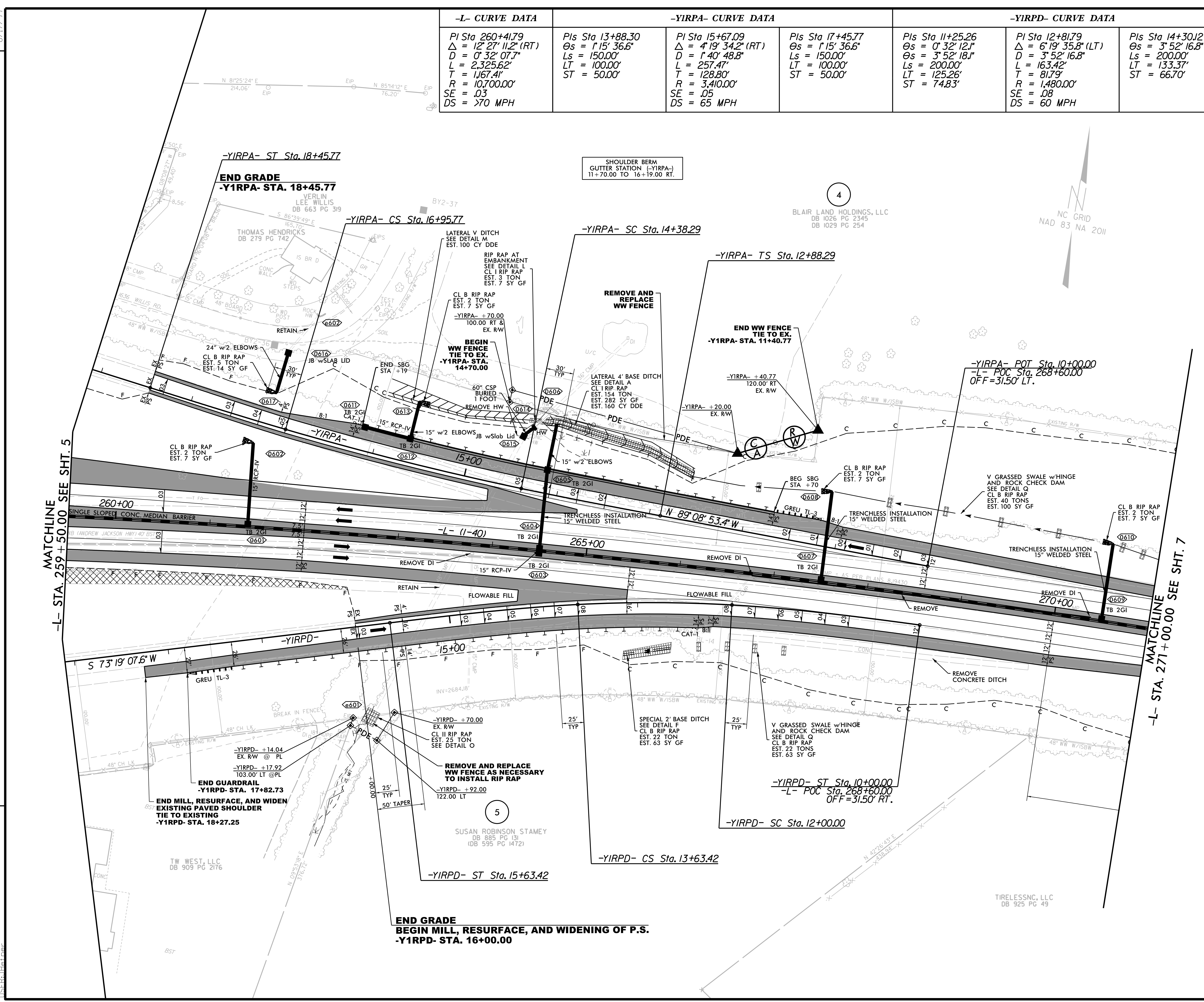
TRANSPORTATION PLANNING/DESIGN - BRIDGE/STRUCTURE DESIGN
 CIVIL/SITE DESIGN - GIS/GPS - CONSTRUCTION OBSERVATION

**DOCUMENT NOT CONSIDERED FINAL
 UNLESS ALL SIGNATURES COMPLETED**

REVISIONS

MATCHLINE -L- STA. 259 + 50.00 SEE SHT. 5

MATCHLINE -L- STA. 271 + 00.00 SEE SHT. 7



5/16/2024 HB0004_rdy_psh_06.dgn
 11:58:16 AM

FOR -L- PROFILE, SEE SHEETS: 9-11
 FOR -YIRPA- PROFILE, SEE SHEET: 12
 FOR -YIRPD- PROFILE, SEE SHEET: 14