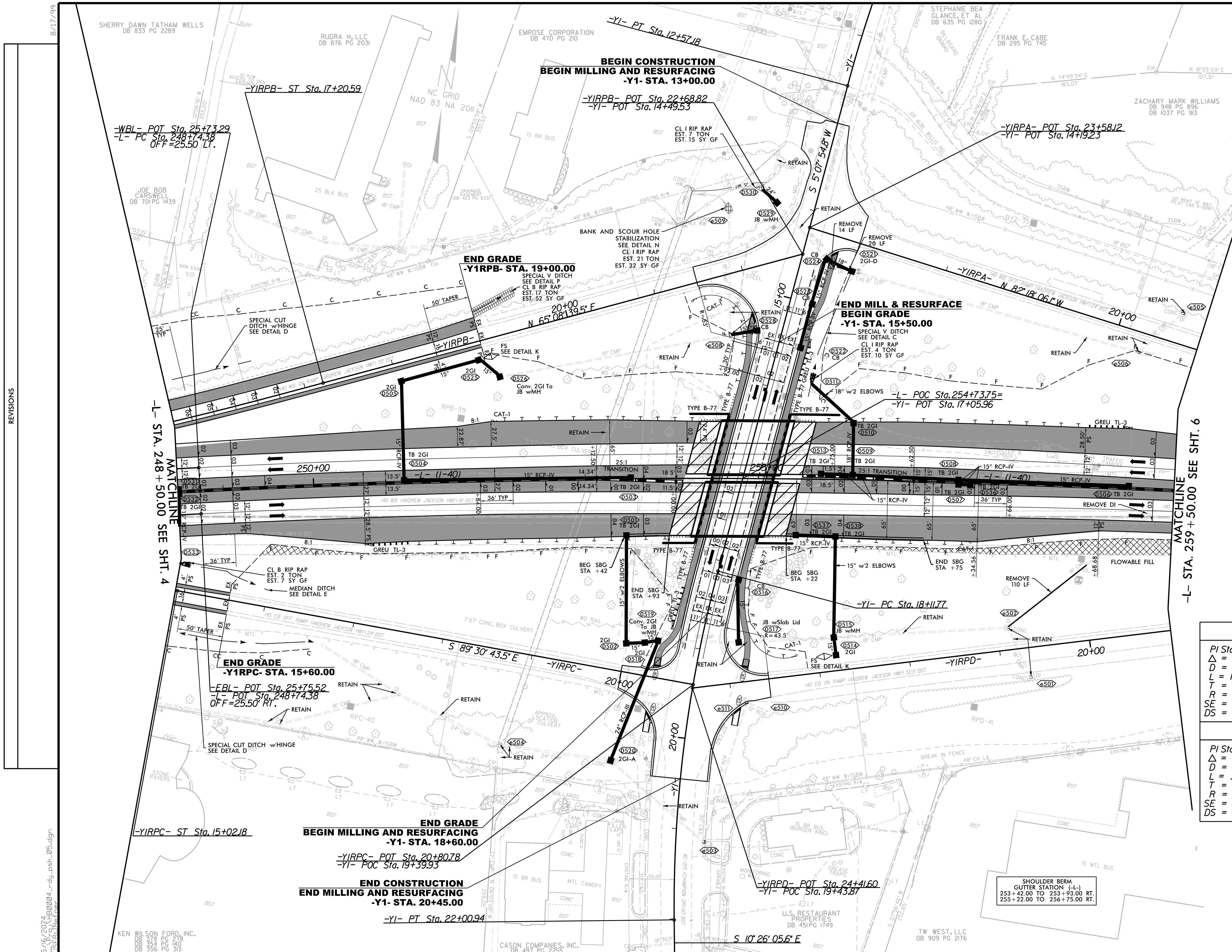


PROJECT REFERENCE NO. <b>HB-0004</b>	SHEET NO. <b>5</b>
RW SHEET NO.	
ROADWAY DESIGN ENGINEER 5/16/2024	HYDRAULICS ENGINEER 5/16/2024
 1223 JONES FRANKLIN Rd. Raleigh, N.C. 27606 License No. F-0377 Bus: 919 851 8077 Fax: 919 851 8107	
TRANSPORTATION PLANNING/DESIGN - BRIDGE/STRUCTURE DESIGN CIVIL/SITE DESIGN - GIS/GPS - CONSTRUCTION OBSERVATION	

**DOCUMENT NOT CONSIDERED FINAL UNLESS ALL SIGNATURES COMPLETED**



**-L- CURVE DATA**

PI Sta 260+41.79
$\Delta = 12^\circ 27' 11.2''$ (RT)
$D = 0^\circ 32' 07.7''$
$L = 2,325.62'$
$T = 1,167.41'$
$R = 1,070.00'$
$SE = .03$
$DS = >70$ MPH

**-YI- CURVE DATA**

PI Sta 11+57.74	PI Sta 20+07.56
$\Delta = 7^\circ 58' 03.9''$ (LT)	$\Delta = 15^\circ 34' 00.5''$ (LT)
$D = 4^\circ 00' 00.0''$	$D = 4^\circ 00' 00.0''$
$L = 199.19'$	$L = 389.17'$
$T = 99.76'$	$T = 195.79'$
$R = 1,432.39'$	$R = 1,432.39'$
$SE = EXIST$	$SE = EXIST$
$DS = EXIST$	$DS = 50$ MPH

**-YIRPB- CURVE DATA**

PI Sta 13+60.64	PIs Sta 16+03.93
$\Delta = 8^\circ 29' 36.0''$ (LT)	$\Theta_s = 2^\circ 00' 19.3''$
$D = 2^\circ 17' 30.6''$	$L_s = 175.00'$
$L = 370.59'$	$LT = 116.67'$
$R = 185.64'$	$ST = 58.34'$
$R = 2,500.00'$	
$SE = .07$	
$DS = 65$ MPH	

- FOR -WBL- PROFILE, SEE SHEET: 8
- FOR -EBL- PROFILE, SEE SHEET: 8
- FOR -L- PROFILE, SEE SHEETS: 9-10
- FOR -YI- PROFILE, SEE SHEET: 12
- FOR -YIRPA- PROFILE, SEE SHEET: 12
- FOR -YIRPB- PROFILE, SEE SHEET: 13
- FOR -YIRPC- PROFILE, SEE SHEET: 13
- FOR -YIRPD- PROFILE, SEE SHEET: 14

SHOULDER BERM  
GUTTER STATION (-L-)  
253+42.00 TO 253+93.00 RT.  
255+22.00 TO 256+75.00 RT.

REVISIONS

-L- STA. 248+50.00 SEE SHT. 4

-L- STA. 259+50.00 SEE SHT. 6

5/16/2024 HB0004\_rdy\_psh\_05.dgn  
11:58:10 AM

KEN WILSON FORD, INC.  
1223 JONES FRANKLIN RD.  
RALEIGH, NC 27606  
919 851 8077

CASON COMPANIES, INC.  
1000 W. HARRIS ST.  
Raleigh, NC 27603

U.S. RESTAURANT PROPERTIES  
DB 451 PG 1749

TW WEST, LLC  
DB 909 PG 2176