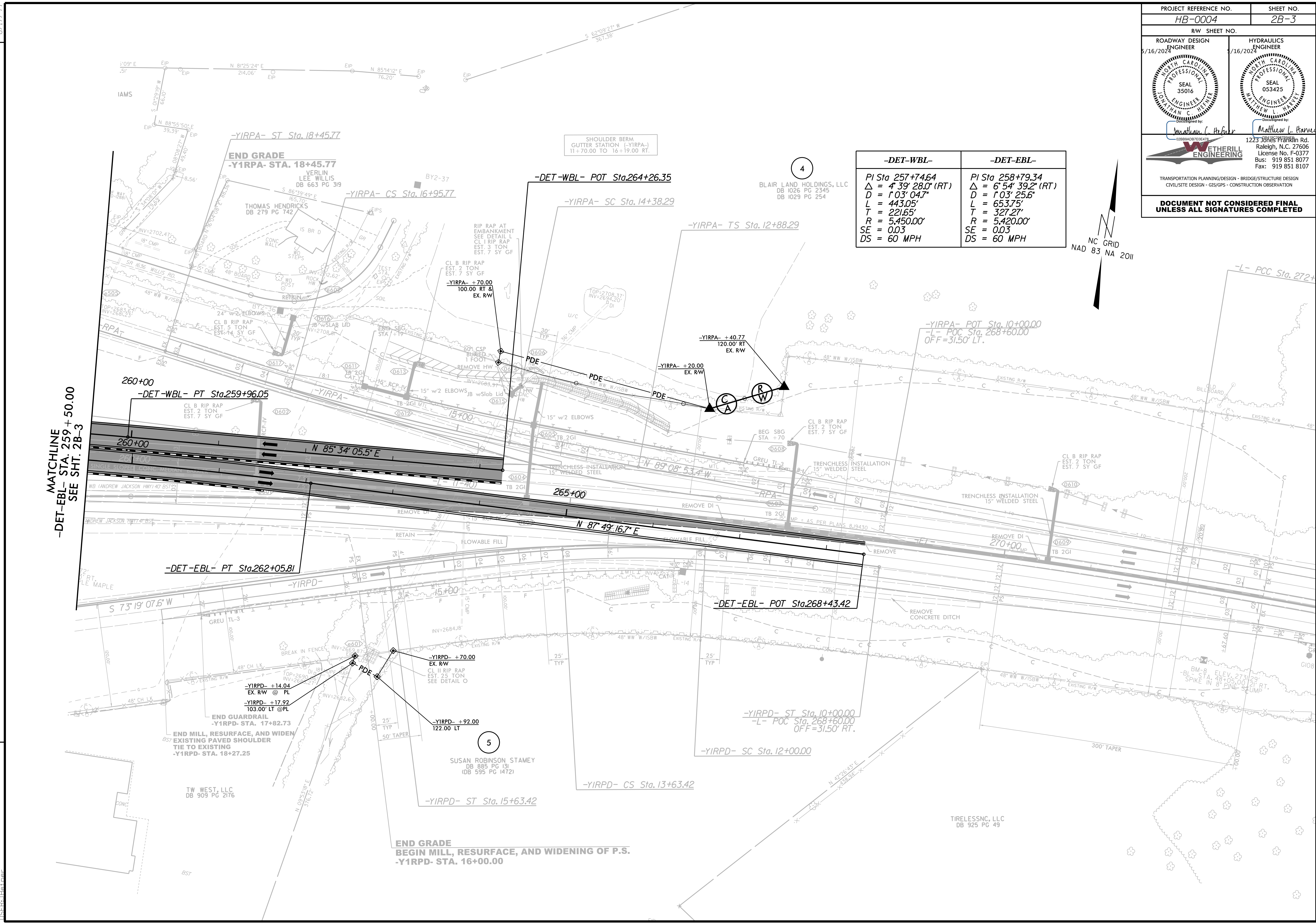
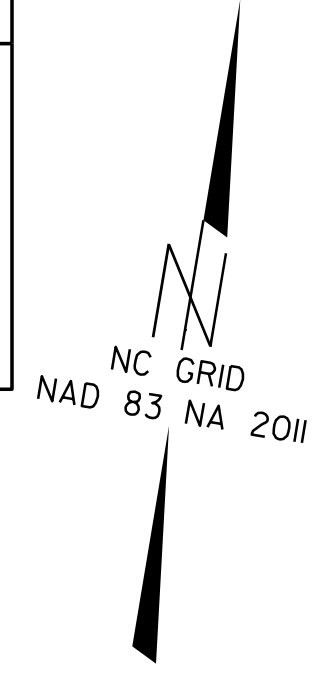


PROJECT REFERENCE NO. HB-0004	SHEET NO. 2B-3
RW SHEET NO.	
ROADWAY DESIGN ENGINEER 5/16/2024	HYDRAULICS ENGINEER 5/16/2024
Matthew C. Heifer	Matthew L. Harve
 1223 Jones Franklin Rd. Raleigh, N.C. 27606 License No. F-0377 Bus: 919 851 8077 Fax: 919 851 8107	
TRANSPORTATION PLANNING/DESIGN - BRIDGE/STRUCTURE DESIGN CIVIL/SITE DESIGN - GIS/GPS - CONSTRUCTION OBSERVATION	
DOCUMENT NOT CONSIDERED FINAL UNLESS ALL SIGNATURES COMPLETED	

-DET-WBL-	-DET-EBL-
PI Sta 257+74.64	PI Sta 258+79.34
$\Delta = 4' 39" 28.0" (RT)$	$\Delta = 6' 54" 39.2" (RT)$
$D = 1' 03' 04.7"$	$D = 1' 03' 25.6"$
$L = 443.05'$	$L = 653.75'$
$T = 221.65'$	$T = 327.27'$
$R = 5,450.00'$	$R = 5,420.00'$
$SE = 0.03$	$SE = 0.03$
$DS = 60 MPH$	$DS = 60 MPH$



MATCHLINE
-DET-EBL- STA. 259+50.00
SEE SHT. 2B-3

REVISIONS

5/16/2024
11:55:11 AM
5:\16\2024_rdu_psh_02B-03_Detail-DETOURS.dgn
T:\E\B\11\11

8.17.99

8.17.99