

REFERENCE: HB-0003

PROJECT: 55041

SEE SHEET 3 FOR PLAN SHEET LAYOUT
AT TIME OF INVESTIGATION

CONTENTS

LINE	STATION	PLAN	X-SECTIONS
-L-	177+35 - 184+85	4	7-9
-L-	184+85 - 192+34	5	10-11
-L-	196+23 - 202+74	6	12-13

STATE OF NORTH CAROLINA
DEPARTMENT OF TRANSPORTATION
DIVISION OF HIGHWAYS
GEOTECHNICAL ENGINEERING UNIT

**ROADWAY
SUBSURFACE INVESTIGATION**

COUNTY HAYWOOD
PROJECT DESCRIPTION REPLACE BRIDGE #239
ON I-40 OVER SR 1550

INVENTORY

STATE	STATE PROJECT REFERENCE NO.	SHEET NO.	TOTAL SHEETS
N.C.	HB-0003	1	13

CAUTION NOTICE

THE SUBSURFACE INFORMATION AND THE SUBSURFACE INVESTIGATION ON WHICH IT IS BASED WERE MADE FOR THE PURPOSE OF STUDY, PLANNING AND DESIGN, AND NOT FOR CONSTRUCTION OR PAY PURPOSES. THE VARIOUS FIELD BORING LOGS, ROCK CORES AND SOIL TEST DATA AVAILABLE MAY BE REVIEWED OR INSPECTED IN RALEIGH BY CONTACTING THE N. C. DEPARTMENT OF TRANSPORTATION, GEOTECHNICAL ENGINEERING UNIT AT (919) 707-6850. THE SUBSURFACE PLANS AND REPORTS, FIELD BORING LOGS, ROCK CORES AND SOIL TEST DATA ARE NOT PART OF THE CONTRACT.

GENERAL SOIL AND ROCK STRATA DESCRIPTIONS AND INDICATED BOUNDARIES ARE BASED ON A GEOTECHNICAL INTERPRETATION OF ALL AVAILABLE SUBSURFACE DATA AND MAY NOT NECESSARILY REFLECT THE ACTUAL SUBSURFACE CONDITIONS BETWEEN BORINGS OR BETWEEN SAMPLED STRATA WITHIN THE BOREHOLE. THE LABORATORY SAMPLE DATA AND THE IN SITU (IN-PLACE) TEST DATA CAN BE RELIED ON ONLY TO THE DEGREE OF RELIABILITY INHERENT IN THE STANDARD TEST METHOD. THE OBSERVED WATER LEVELS OR SOIL MOISTURE CONDITIONS INDICATED IN THE SUBSURFACE INVESTIGATIONS ARE AS RECORDED AT THE TIME OF THE INVESTIGATION. THESE WATER LEVELS OR SOIL MOISTURE CONDITIONS MAY VARY CONSIDERABLY WITH TIME ACCORDING TO CLIMATIC CONDITIONS INCLUDING TEMPERATURES, PRECIPITATION AND WIND, AS WELL AS OTHER NON-CLIMATIC FACTORS.

THE BIDDER OR CONTRACTOR IS CAUTIONED THAT DETAILS SHOWN ON THE SUBSURFACE PLANS ARE PRELIMINARY ONLY AND IN MANY CASES THE FINAL DESIGN DETAILS ARE DIFFERENT. FOR BIDDING AND CONSTRUCTION PURPOSES, REFER TO THE CONSTRUCTION PLANS AND DOCUMENTS FOR FINAL DESIGN INFORMATION ON THIS PROJECT. THE DEPARTMENT DOES NOT WARRANT OR GUARANTEE THE SUFFICIENCY OR ACCURACY OF THE INVESTIGATION MADE, NOR THE INTERPRETATIONS MADE, OR OPINION OF THE DEPARTMENT AS TO THE TYPE OF MATERIALS AND CONDITIONS TO BE ENCOUNTERED. THE BIDDER OR CONTRACTOR IS CAUTIONED TO PERFORM INDEPENDENT SUBSURFACE INVESTIGATIONS AND MAKE INTERPRETATIONS AS NECESSARY TO CONFIRM CONDITIONS ENCOUNTERED ON THE PROJECT. THE CONTRACTOR SHALL HAVE NO CLAIM FOR ADDITIONAL COMPENSATION OR FOR AN EXTENSION OF TIME FOR ANY REASON RESULTING FROM THE ACTUAL CONDITIONS ENCOUNTERED AT THE SITE DIFFERING FROM THOSE INDICATED IN THE SUBSURFACE INFORMATION.

- NOTES:
- THE INFORMATION CONTAINED HEREIN IS NOT IMPLIED OR GUARANTEED BY THE N. C. DEPARTMENT OF TRANSPORTATION AS ACCURATE NOR IS IT CONSIDERED PART OF THE PLANS, SPECIFICATIONS OR CONTRACT FOR THE PROJECT.
 - BY HAVING REQUESTED THIS INFORMATION, THE CONTRACTOR SPECIFICALLY WAIVES ANY CLAIMS FOR INCREASED COMPENSATION OR EXTENSION OF TIME BASED ON DIFFERENCES BETWEEN THE CONDITIONS INDICATED HEREIN AND THE ACTUAL CONDITIONS AT THE PROJECT SITE.

PERSONNEL

CD JOHNSON

C STEWMAN

CJ COFFEY

JD WORLEY

INVESTIGATED BY DMM

DRAWN BY DMM

CHECKED BY DCE

SUBMITTED BY DCE

DATE 5/30/2023



DocuSigned by:

D. Matt Mullen

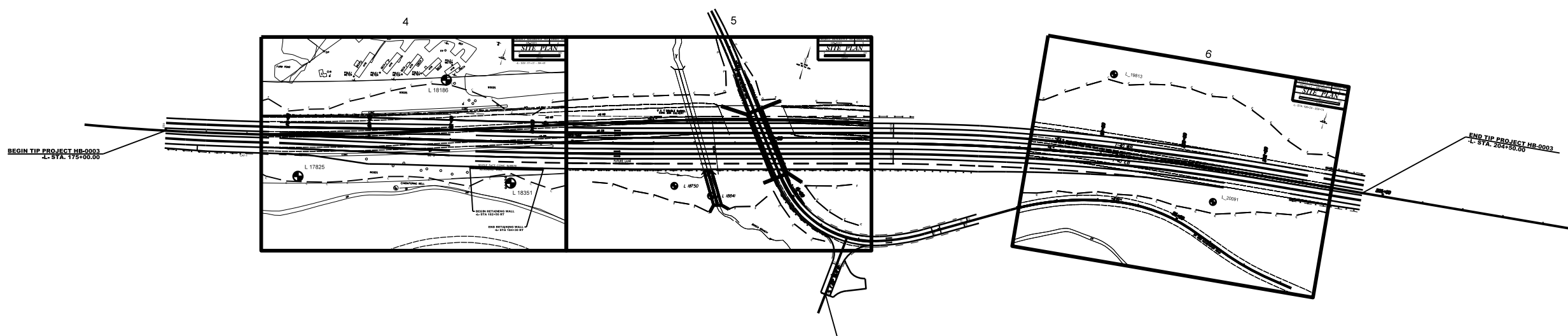
06/12/2023

197737B5B9764F3

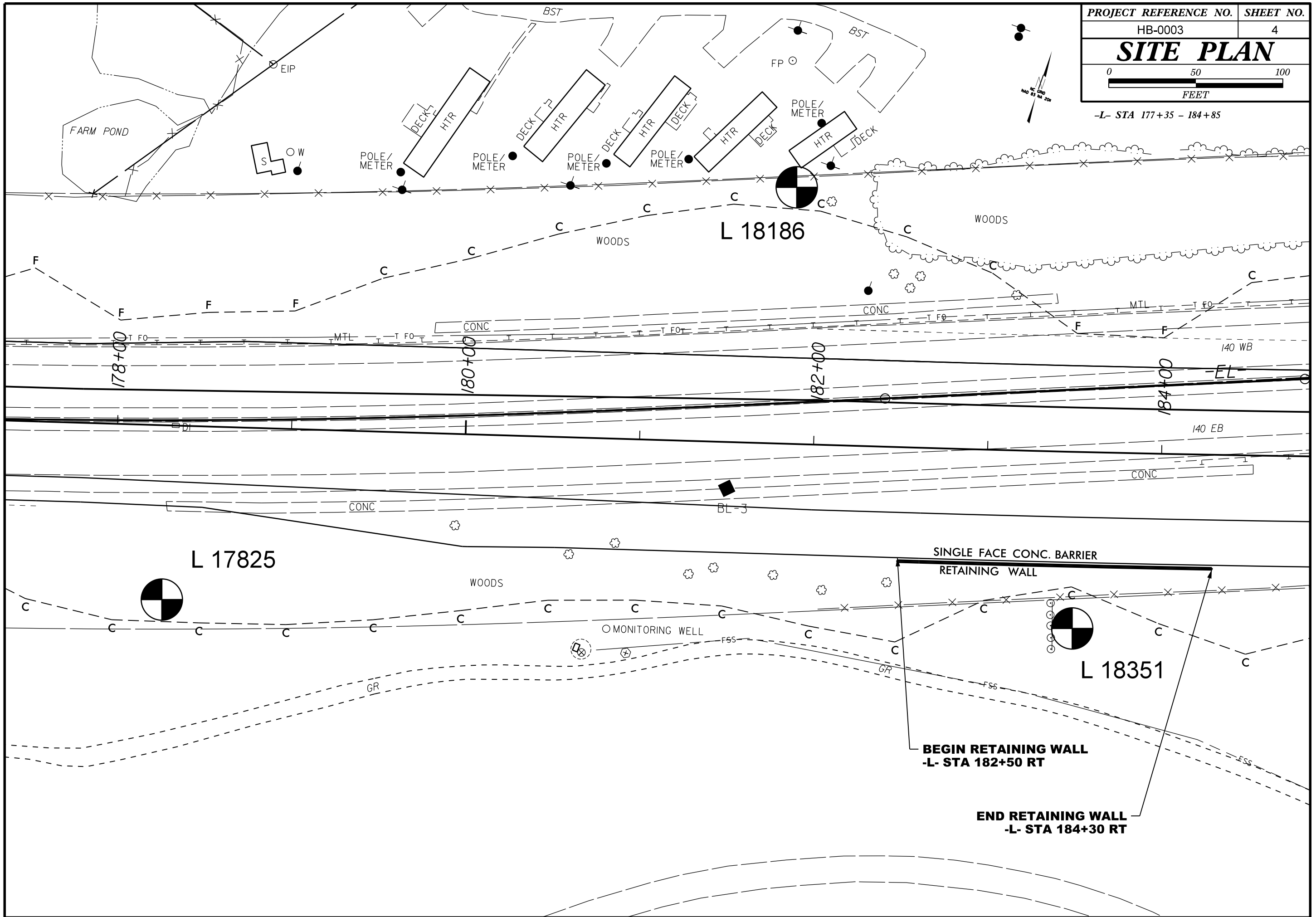
SIGNATURE

DATE

**DOCUMENT NOT CONSIDERED FINAL
UNLESS ALL SIGNATURES COMPLETED**



PROJECT REFERENCE NO.	SHEET NO.
HB-0003	4
SITE PLAN	
-L- STA 177+35 - 184+85	



L 17825

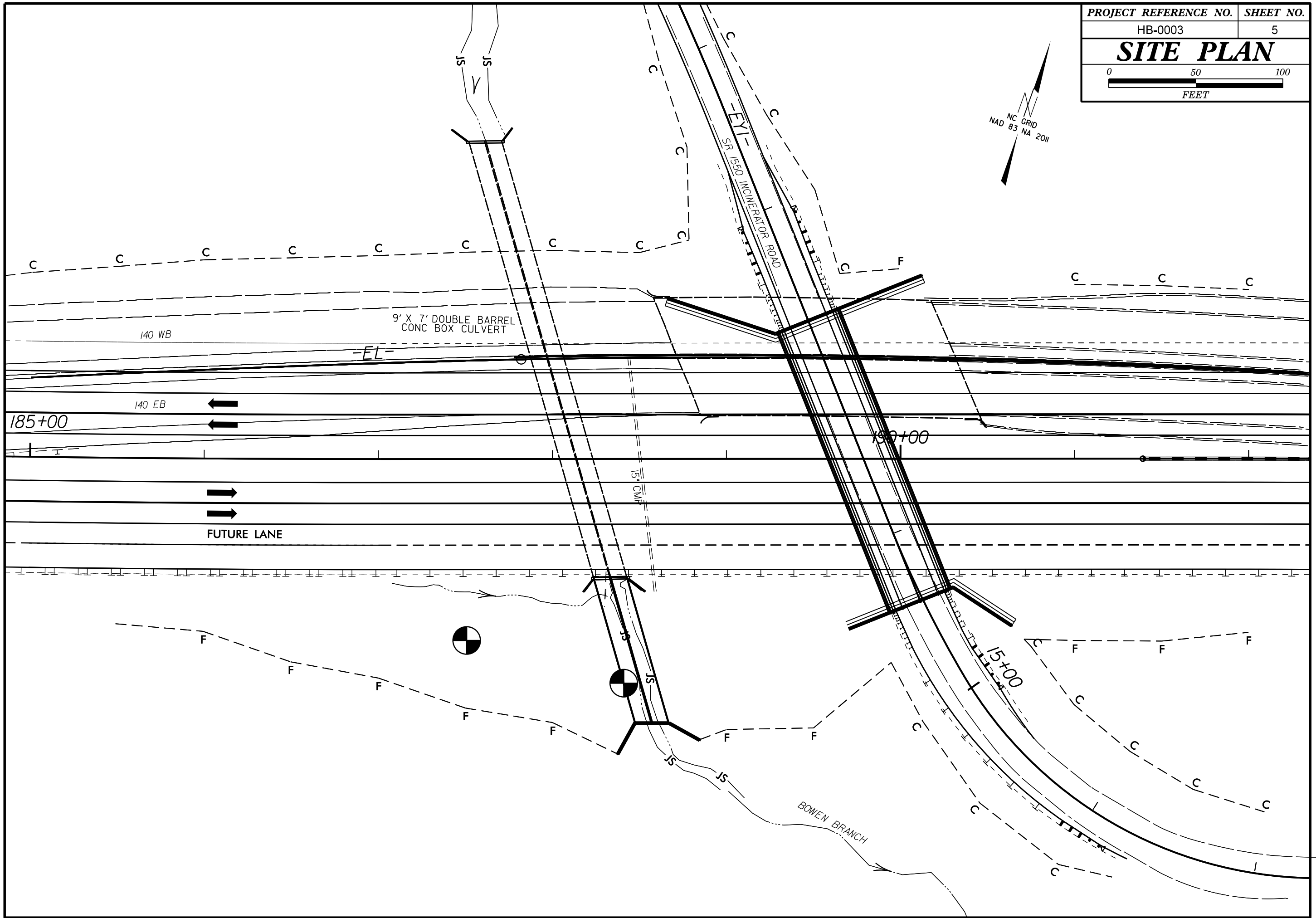
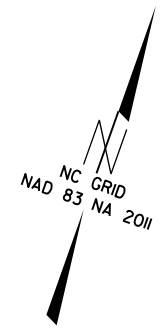
L 18186

L 18351

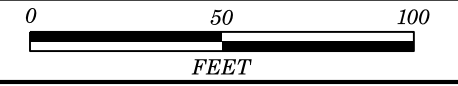
SINGLE FACE CONC. BARRIER
RETAINING WALL

BEGIN RETAINING WALL
-L- STA 182+50 RT

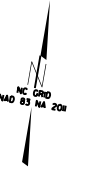
END RETAINING WALL
-L- STA 184+30 RT



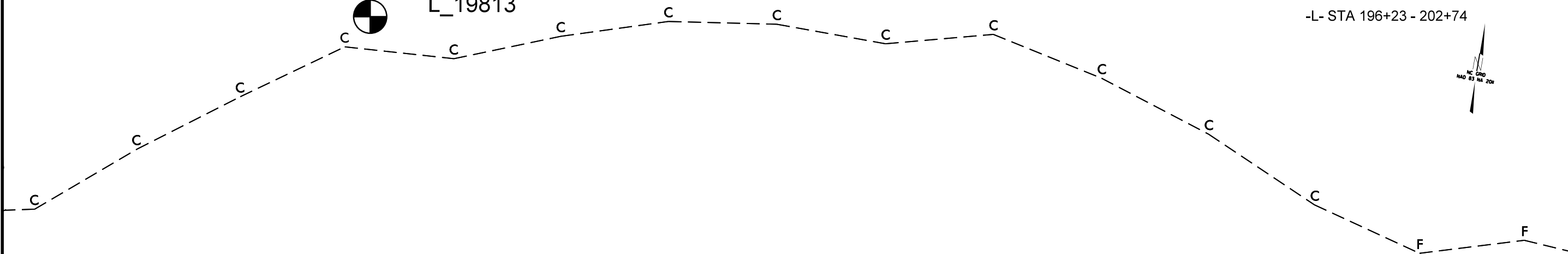
SITE PLAN



-L- STA 196+23 - 202+74



L_19813



198+00

200+00

202+00

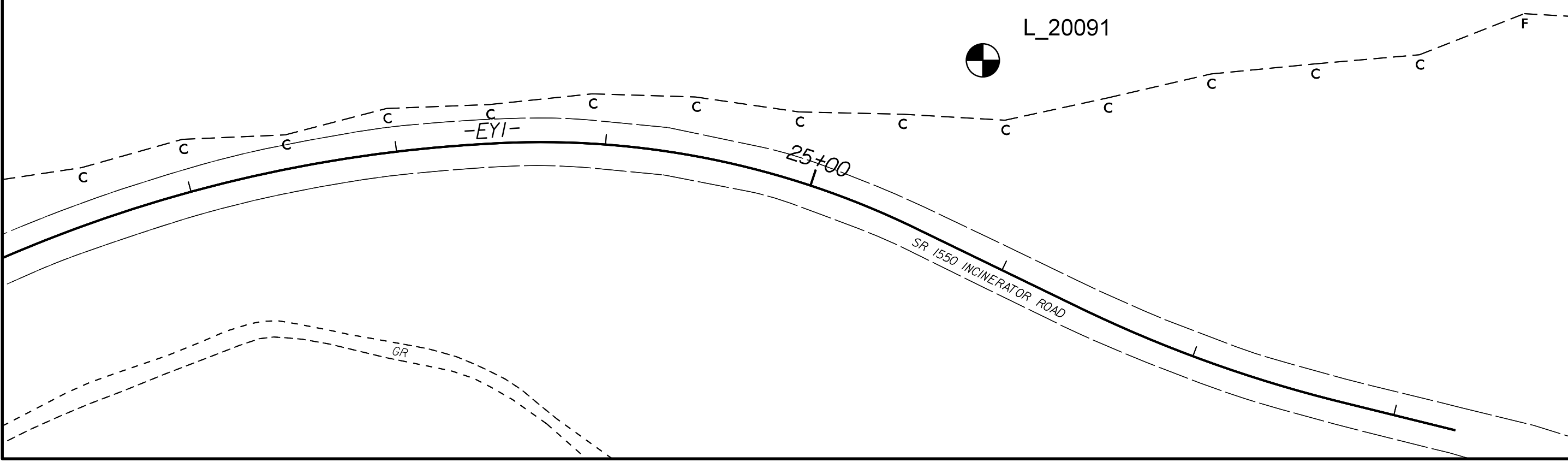
I-40 WB

-EL-

I-40 EB

-L-

L_20091

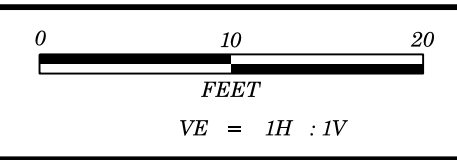


25+00

SR 1550 INCINERATOR ROAD

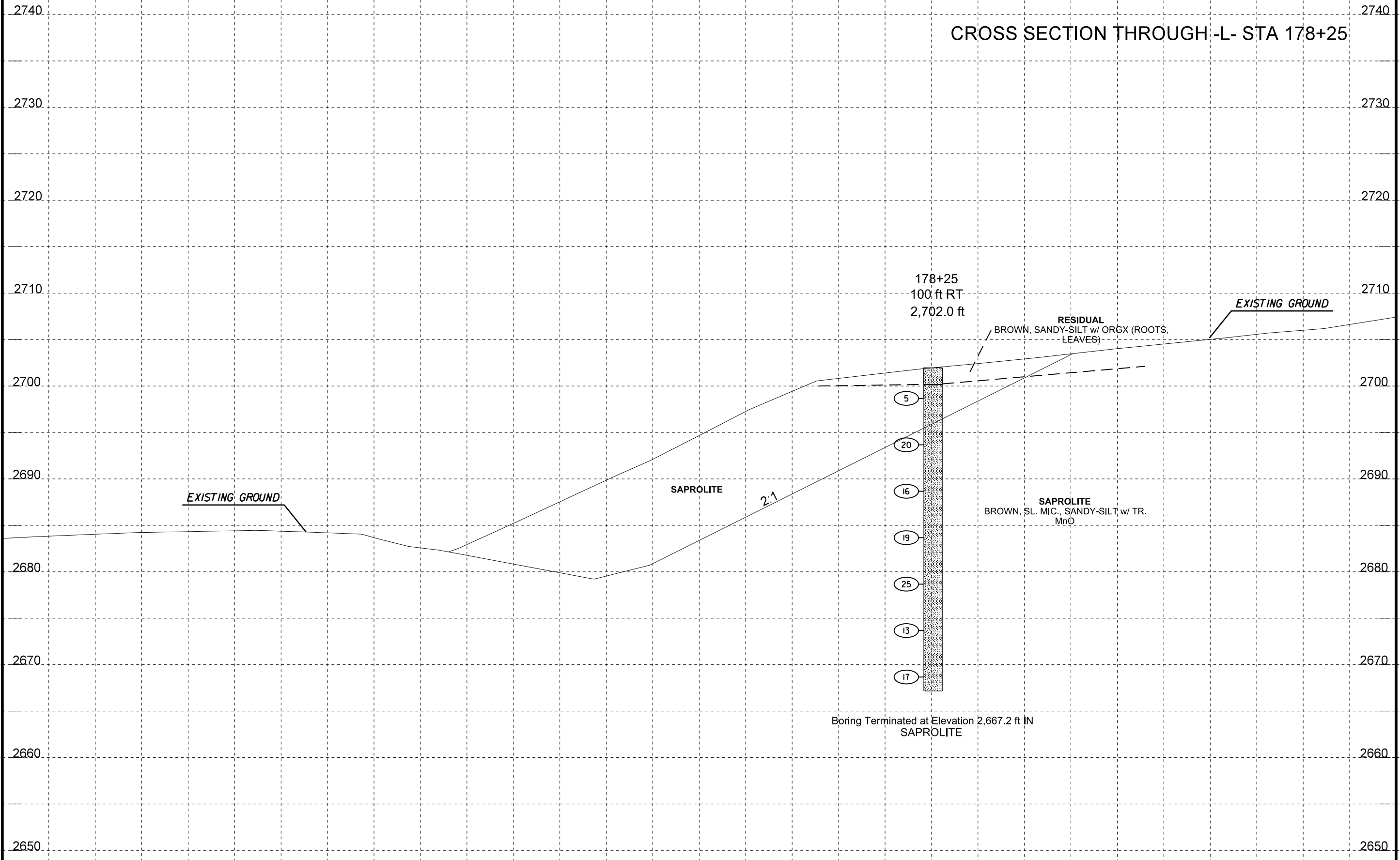
-EYI-

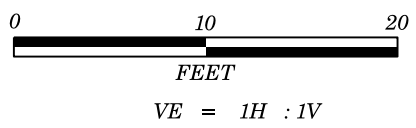
GR



PROJECT REFERENCE NO.	SHEET NO.
HB-0003	7
REPLACE HAYWOOD BRIDGE #239 ON I-40 OVER SR 1550	

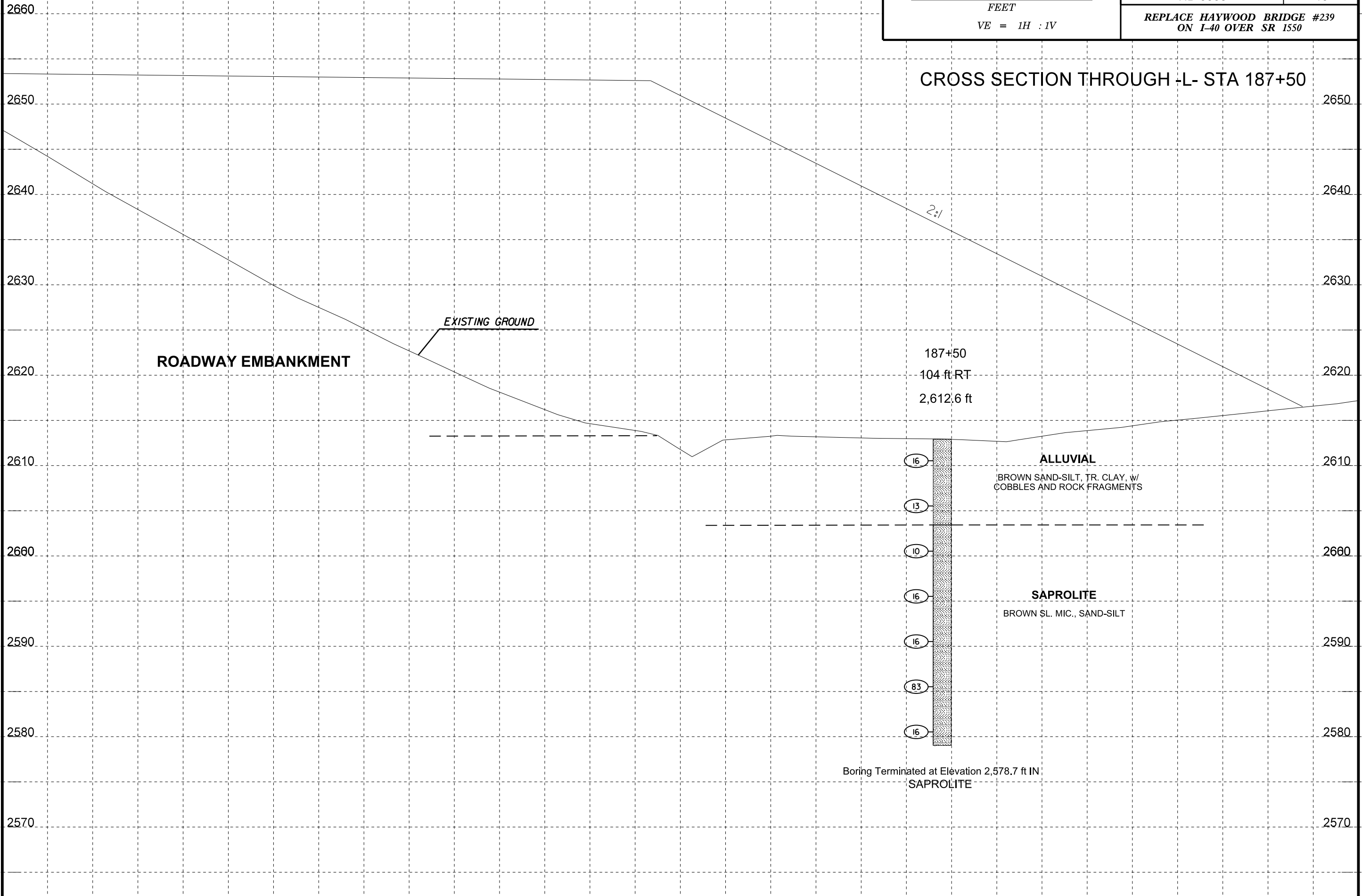
CROSS SECTION THROUGH -L- STA 178+25





PROJECT REFERENCE NO.	SHEET NO.
HB-0003	10
REPLACE HAYWOOD BRIDGE #239 ON I-40 OVER SR 1550	

CROSS SECTION THROUGH -L- STA 187+50

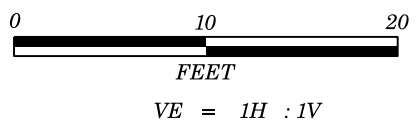


10' RT

50' RT

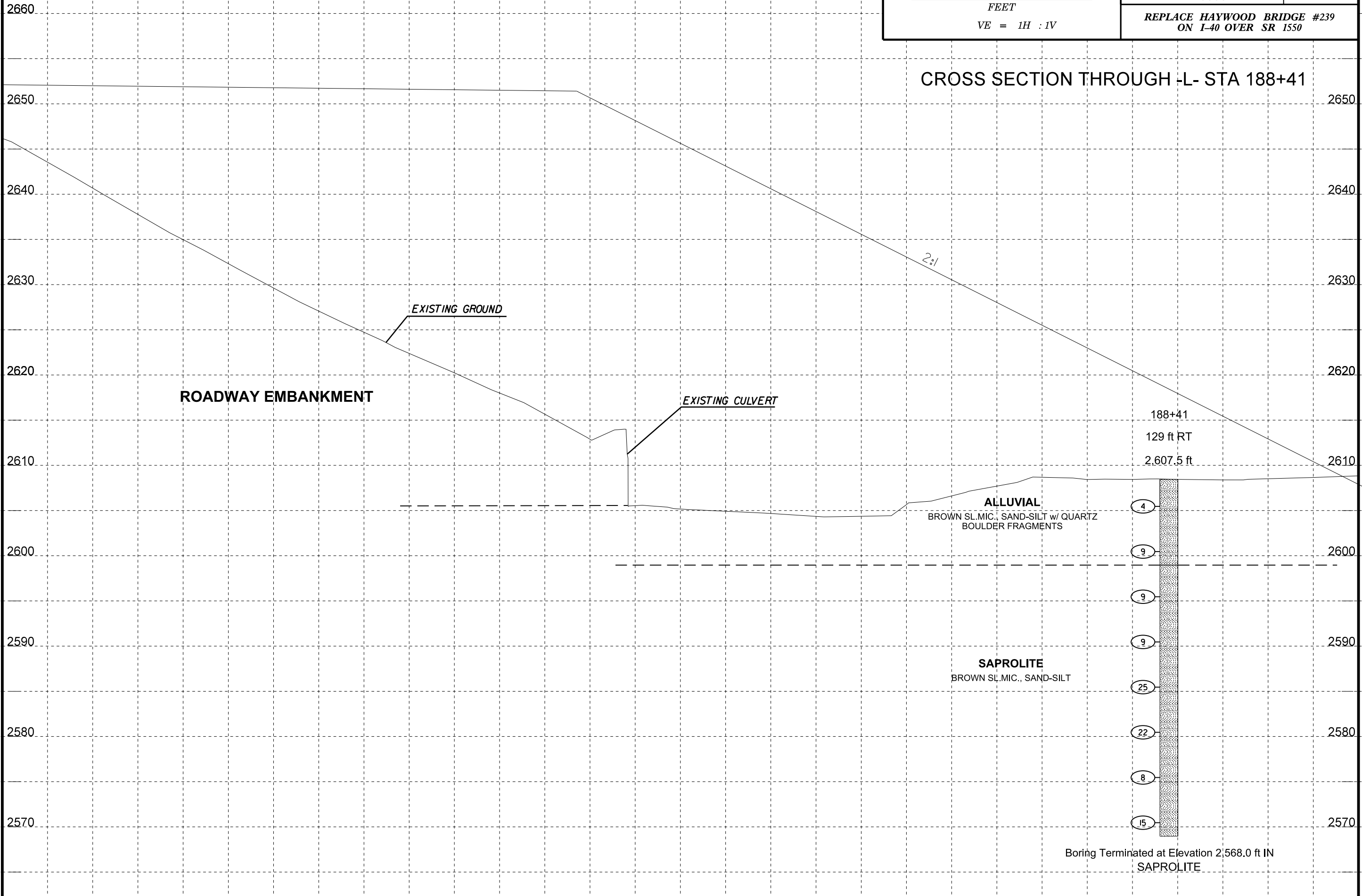
100' RT

Boring Terminated at Elevation 2,578.7 ft IN
SAPROLITE



PROJECT REFERENCE NO.	SHEET NO.
HB-0003	11
REPLACE HAYWOOD BRIDGE #239 ON I-40 OVER SR 1550	

CROSS SECTION THROUGH -L- STA 188+41

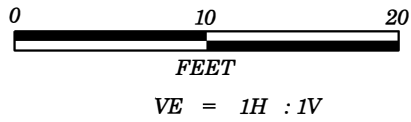


10' RT

50' RT

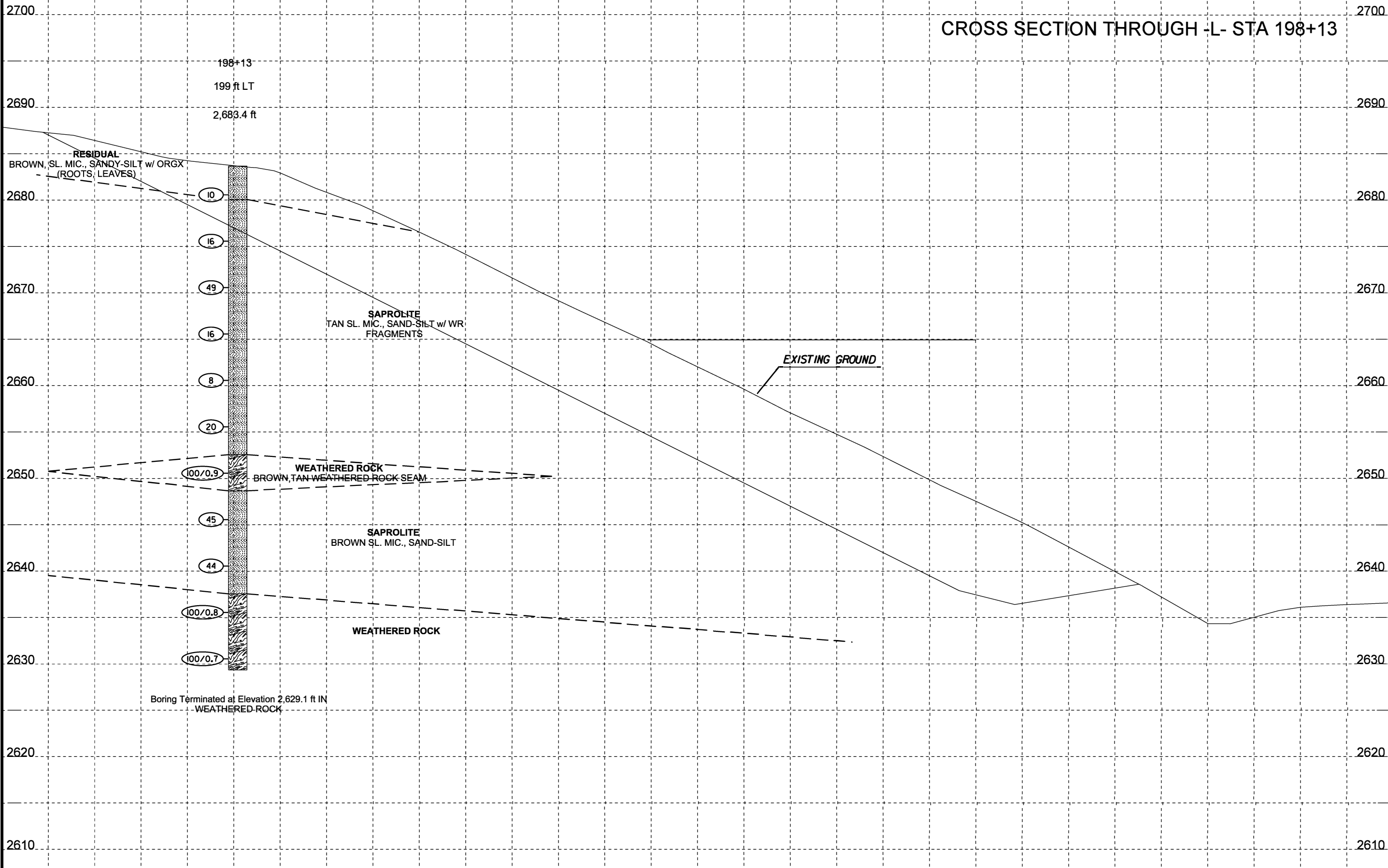
100' RT

130' RT



PROJECT REFERENCE NO.	SHEET NO.
HB-0003	12
REPLACE HAYWOOD BRIDGE #239 ON I-40 OVER SR 1550	

CROSS SECTION THROUGH -L- STA 198+13



2700
2690
2680
2670
2660
2650
2640
2630
2620
2610

2700
2690
2680
2670
2660
2650
2640
2630
2620
2610

