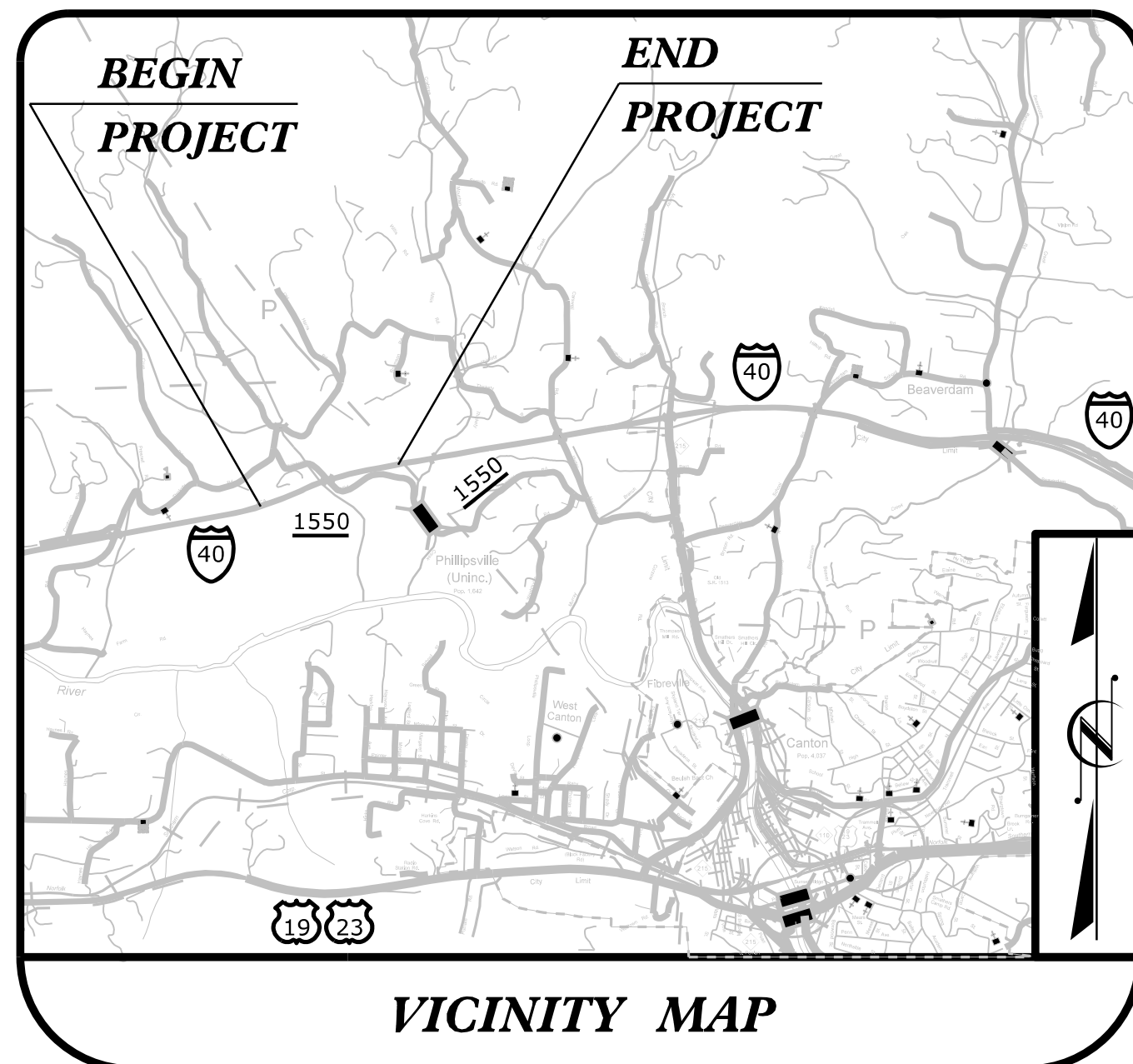


09/08/99

TIP PROJECT: HB-0003



STATE OF NORTH CAROLINA
DIVISION OF HIGHWAYS

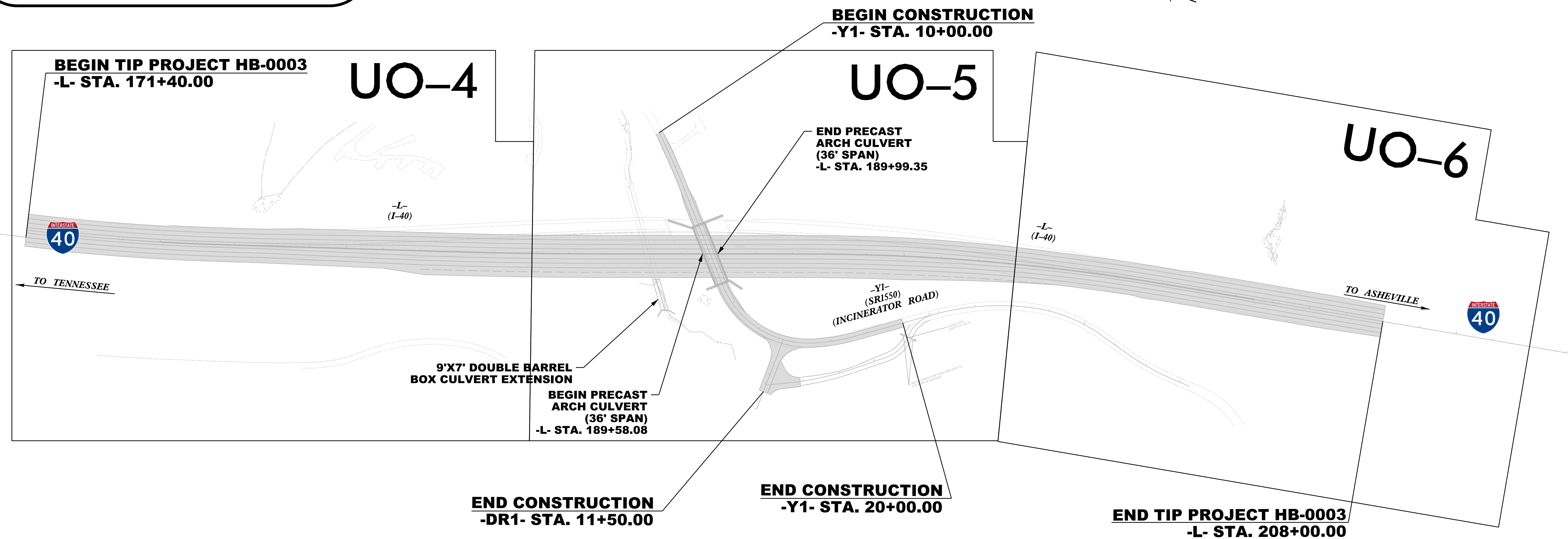
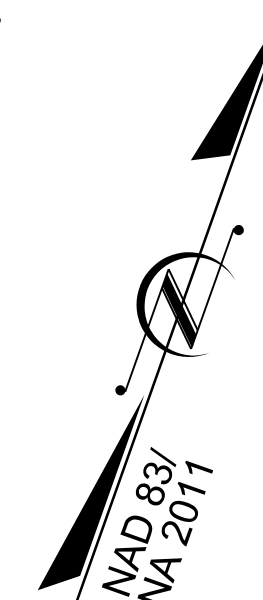
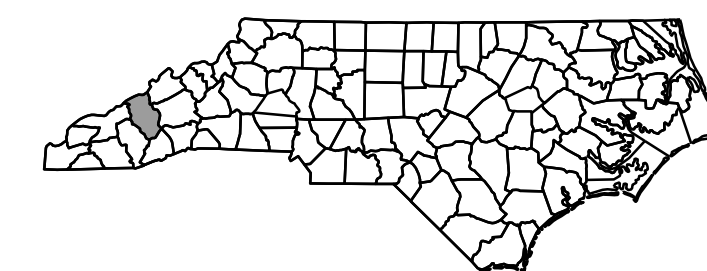
**UTILITIES BY OTHERS PLANS
HAYWOOD COUNTY**

LOCATION: BRIDGE 239 ON I-40 OVER SR1550
(INCINERATOR ROAD)

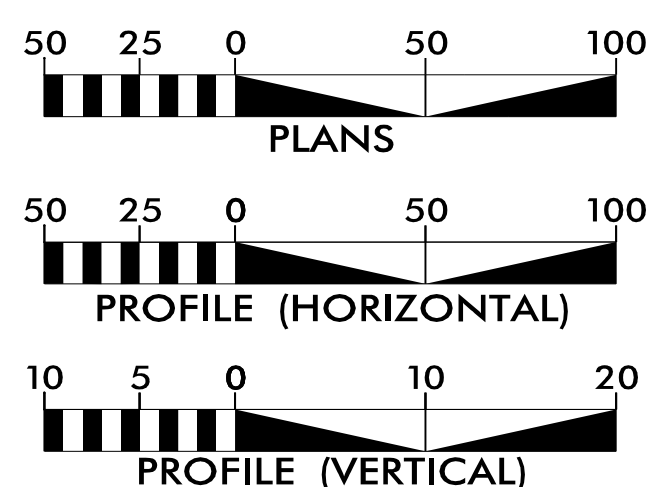
TYPE OF WORK: UTILITY RELOCATION BY OTHERS

STATE PROJECT REFERENCE NO.	SHEET NO.
HB-0003	UO-1

NOTE:
ALL UTILITY WORK SHOWN ON THIS SHEET WILL BE DONE BY OTHERS. NO PAYMENT WILL BE MADE TO THE CONTRACTOR FOR UTILITY WORK SHOWN ON THIS SHEET.



GRAPHIC SCALES



INDEX OF SHEETS

SHEET NO.:	DESCRIPTION:
UO-1	TITLE SHEET
UO-2	UTILITY SYMBOLOGY SHEET
UO-3	SHEET OMITTED
UO-4 THRU UO-6	UBO PLAN SHEETS

UTILITY OWNERS WITH CONFLICTS

- (A) COMMUNICATIONS - AT&T
- (B) COMMUNICATIONS - NCDOT
- (C) POWER - DUKE ENERGY
- (D) POWER - HAYWOOD ELECTRIC MEMBERSHIP CORP
- (E) SEWER - PACTIV EVERGREEN PAPER PLANT

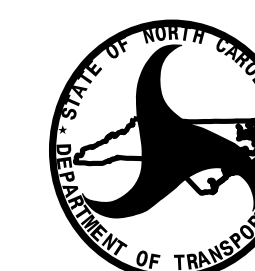
PREPARED IN THE OFFICE OF:



1223 Jones Franklin Rd.
Raleigh, N.C. 27606
License No. F-0377
Bus: 919 851 8077
Fax: 919 851 8107

TRANSPORTATION PLANNING/DESIGN - BRIDGE/STRUCTURE DESIGN
CIVIL/SITE DESIGN - GIS/GPS - SURVEY/SUE - UTILITIES - CONSTRUCTION OBSERVATION

PANKIL K. PATEL UTILITY PROJECT MANAGER
TREVER REEVES PROJECT UTILITY COORDINATOR



DIVISION OF HIGHWAYS
DIVISION 14
253 Webster Road
Sylva, NC, 28779

ZACH SHULER, PE BRIDGE PROGRAM MANAGER
ROBERT GOLDING DIVISION UTILITY COORDINATOR

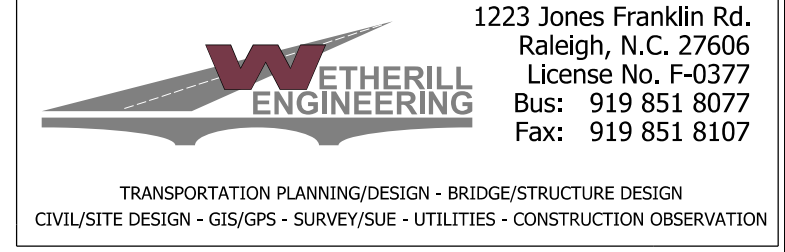
4/7/2024
P:\FH\HB0003_ut_tsh_U01.psh.dgn
USER: Treves

5/14/99

STATE OF NORTH CAROLINA DIVISION OF HIGHWAYS

UTILITIES BY OTHERS	PROJECT REFERENCE NO.	SHEET NO.
	HB-0003	UO-2

ALL PROPOSED UTILITY WORK SHOWN ON THIS SHEET WILL BE DONE BY OTHERS. NO PAYMENT WILL BE MADE TO THE CONTRACTOR FOR PROPOSED UTILITY WORK SHOWN ON THIS SHEET.



UTILITIES PLAN SHEET SYMBOLS

PROPOSED WATER SYMBOLS

Water Line (Sized as Shown)	
11 1/4 Degree Bend	
22 1/2 Degree Bend	
45 Degree Bend	
90 Degree Bend	
Plug	
Tee	
Cross	
Reducer	
Gate Valve	
Butterfly Valve	
Tapping Valve	
Line Stop	
Line Stop with Bypass	
Blow Off	
Fire Hydrant	
Relocate Fire Hydrant	
Remove Fire Hydrant	REM FH
Water Meter	
Relocate Water Meter	
Remove Water Meter	REM WM
Water Pump Station	
RPZ Backflow Preventer	
DCV Backflow Preventer	
Relocate RPZ Backflow Preventer	
Relocate DCV Backflow Preventer	

PROPOSED SEWER SYMBOLS

Gravity Sewer Line (Sized as Shown)	
Force Main Sewer Line (Sized as Shown)	
Manhole (Sized per Note)	
Sewer Pump Station	

PROPOSED MISCELLANEOUS UTILITIES SYMBOLS

Power Pole	
Telephone Pole	
Joint Use Pole	
Telephone Pedestal	
Utility Line by Others (Type as Shown)	
Trenchless Installation	
Encasement by Open Cut	
Encasement	
Directionally Drilled Conduit	

Thrust Block	
Air Release Valve	
Utility Vault	
Concrete Pier	
Steel Pier	
Remove Pole	REM
Plan Note	
Pay Item Note	

EXISTING UTILITIES SYMBOLS

Power Pole		*Underground Power Line	
Telephone Pole		*Underground Telephone Cable	
Joint Use Pole		*Underground Telephone Conduit	
Utility Pole		*Underground Fiber Optics Telephone Cable	
Utility Pole with Base		*Underground TV Cable	
H-Frame Pole		*Underground Fiber Optics TV Cable	
Power Transmission Line Tower		*Underground Gas Pipeline	
Water Manhole		Aboveground Gas Pipeline	
Power Manhole		*Underground Water Line	
Telephone Manhole		Aboveground Water Line	
Sanitary Sewer Manhole		*Underground Gravity Sanitary Sewer Line	
Hand Hole for Cable		Aboveground Gravity Sanitary Sewer Line	
Power Transformer		*Underground SS Forced Main Line	
Telephone Pedestal		Underground Unknown Utility Line	
CATV Pedestal		SUE Test Hole	
Gas Valve		Water Meter	
Gas Meter		Water Valve	
Located Miscellaneous Utility Object		Fire Hydrant	
Abandoned According to Utility Records	AATUR	Sanitary Sewer Cleanout	
End of Information	E.O.I.		


*For Existing Utilities
 Utility Line Drawn from Record (Type as Shown)
 Designated Utility Line (Type as Shown)

5/14/99

UTILITIES BY OTHERS

PROJECT REFERENCE NO.	SHEET NO.
HB-0003	U0-4
THIS SHEET CORRESPONDS TO RDY-4	

ALL PROPOSED UTILITY WORK SHOWN ON THIS SHEET WILL BE DONE BY OTHERS. NO PAYMENT WILL BE MADE TO THE CONTRACTOR FOR PROPOSED UTILITY WORK SHOWN ON THIS SHEET.



1223 Jones Franklin Rd.
Raleigh, N.C. 27606
License No. F-0377
Bus: 919 851 8077
Fax: 919 851 8107

TRANSPORTATION PLANNING/DESIGN - BRIDGE/STRUCTURE DESIGN
CIVIL/SITE DESIGN - GIS/GPS - SURVEY/SUE - UTILITIES - CONSTRUCTION OBSERVATION

**BEGIN TIP PROJECT HB-0003
BEGIN MILL, OVERLAY, &
PAVED SHOULDER REPLACEMENT
-L- STA. 171+40.00**

**BEGIN WESTBOUND DETOUR
-DET-WBL- POT Sta. 175+00.00=
-L- STA. 175+00.00, 19.5' LT**

**REMOVE WOODED DEBRIS
PAYMENT WILL BE MADE UNDER
PAYITEM FOR CLEARING AND GRUBBING.**

**REMOVE POWER POLE
(HAYWOOD EMC)**

**REMOVE OVERHEAD POWER
(HAYWOOD EMC)**

**REMOVE POWER POLE
(HAYWOOD EMC)**

**ABANDON NCDOT FIBER
(NCDOT)**

W.E.C. ENTERPRISES
DB 411 PG 553

**REMOVE WOODED DEBRIS
PAYMENT WILL BE MADE UNDER
PAYITEM FOR CLEARING AND GRUBBING.**

**NCDOT FIBER IS FOR REFERENCE ONLY
SEE UC PLANS FOR CONSTRUCTION**

**BEGIN GUARDRAIL
-L- STA. 175+32 LT**

**BEGIN GUARDRAIL
-L- STA 172+40 RT**

**BEGIN GRADE
-L- STA. 175+00.00**

**RETAIN EXISTING MEDIAN BARRIER
-L- STA. 171+40 TO 175+00
BEGIN PROPOSED MEDIAN BARRIER
-L- STA. 175+00**

**REMOVE WOODED DEBRIS
PAYMENT WILL BE MADE UNDER
PAYITEM FOR CLEARING AND GRUBBING.**

**END GUARDRAIL
-L- STA 177+05 RT**

**BEGIN GUARDRAIL
-L- STA 182+15 RT**

BEGIN -DET-EBL-

BLUE RIDGE PAPER PRODUCTS INC.
DB 472 PG 1073

MATCHLINE -L- STA. 185+00 SEE SHEET U0-5

8/17/99

P:\4406_P\23128.01_HB-0003\Utilities\Engineering\UBO\Proj\HB0003.ut_r.dwg U04.psh.dgn
1/3/2024

ALL PROPOSED UTILITY WORK SHOWN ON THIS SHEET WILL BE DONE BY OTHERS. NO PAYMENT WILL BE MADE TO THE CONTRACTOR FOR PROPOSED UTILITY WORK SHOWN ON THIS SHEET.



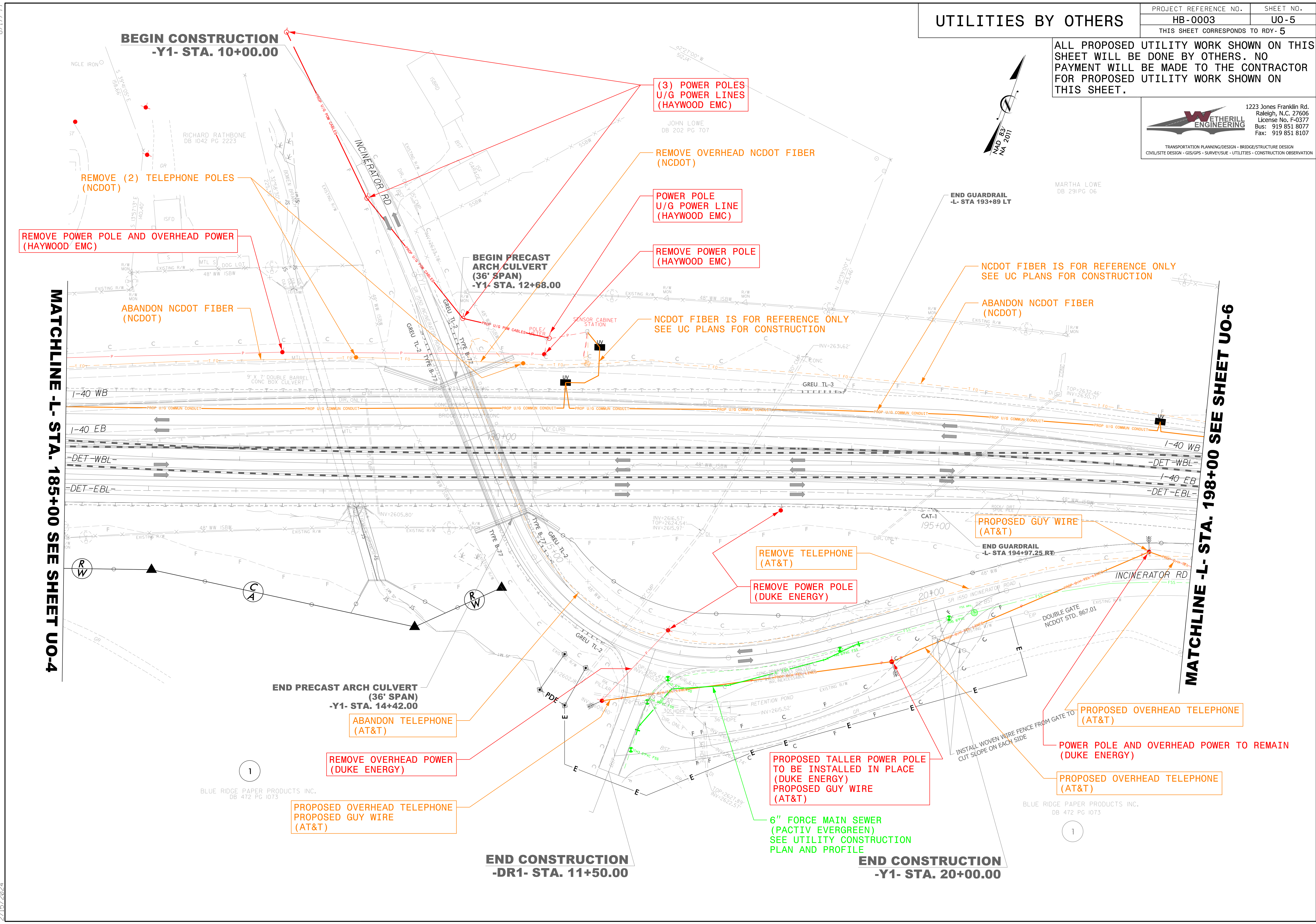
1223 Jones Franklin Rd.
Raleigh, N.C. 27606
License No. F-0377
Bus: 919 851 8077
Fax: 919 851 8107

TRANSPORTATION PLANNING/DESIGN - BRIDGE/STRUCTURE DESIGN
CIVIL/SITE DESIGN - GIS/GPS - SURVEY/SUE - UTILITIES - CONSTRUCTION OBSERVATION

8/17/99
2:07:51 PM
E:\2023\3128.01.HB-0003\Utilities\Engineering\UB0\Proj\HB0003.ut_r.dwg U05_psh.dgn
5/15/2024

MATCHLINE -L- STA. 185+00 SEE SHEET UO-4

MATCHLINE -L- STA. 198+00 SEE SHEET UO-6



BLUE RIDGE PAPER PRODUCTS INC.
DB 472 PG 1073

BLUE RIDGE PAPER PRODUCTS INC.
DB 472 PG 1073

END CONSTRUCTION
-DR1- STA. 11+50.00

END CONSTRUCTION
-Y1- STA. 20+00.00

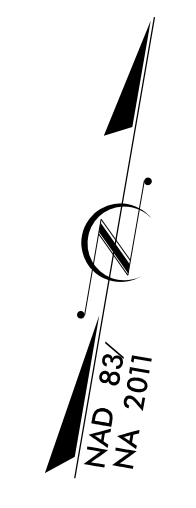
UTILITIES BY OTHERS

PROJECT REFERENCE NO.	SHEET NO.
HB-0003	U0-6
THIS SHEET CORRESPONDS TO RDY-6	

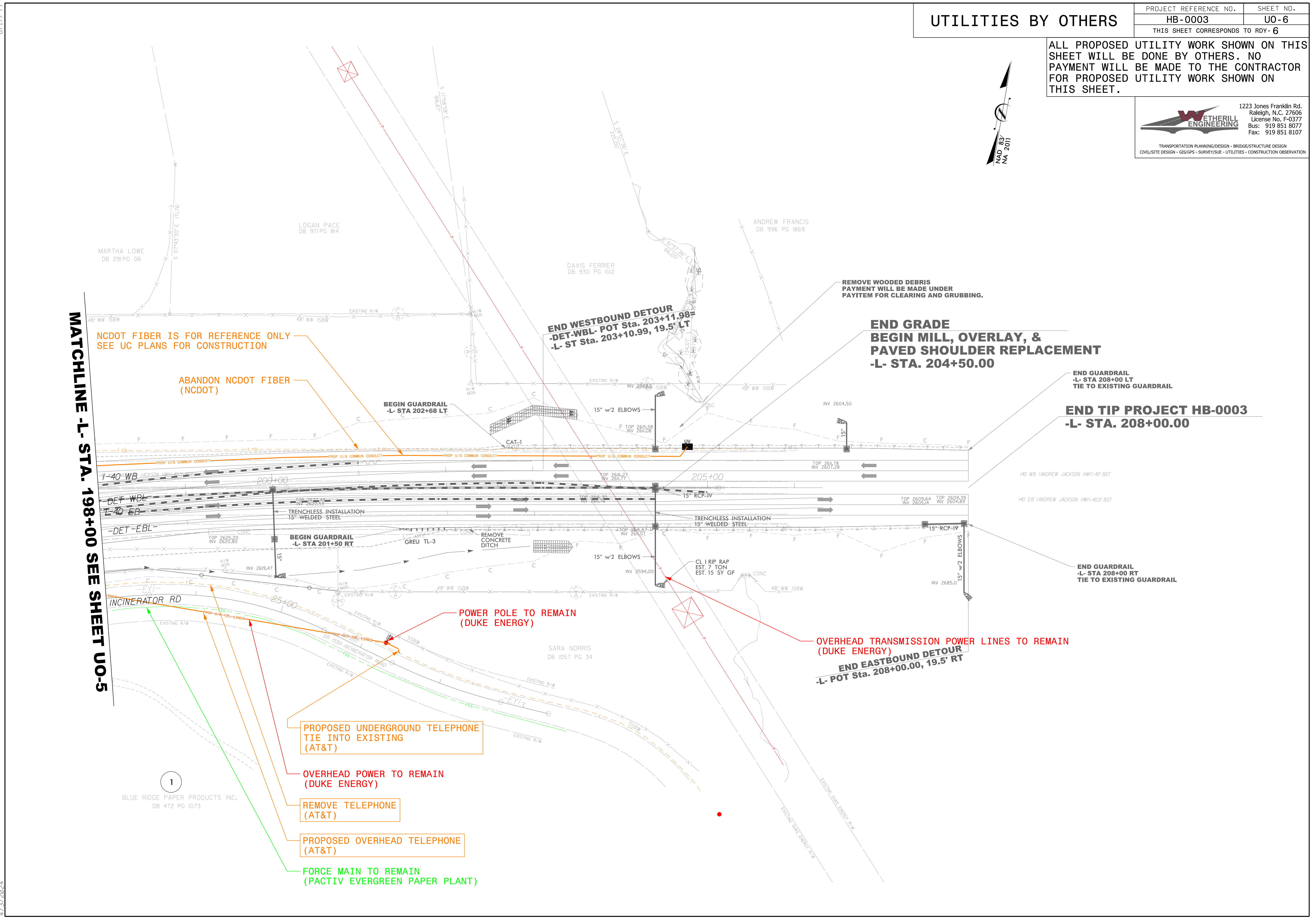
ALL PROPOSED UTILITY WORK SHOWN ON THIS SHEET WILL BE DONE BY OTHERS. NO PAYMENT WILL BE MADE TO THE CONTRACTOR FOR PROPOSED UTILITY WORK SHOWN ON THIS SHEET.

WETHERILL ENGINEERING
 1223 Jones Franklin Rd.
 Raleigh, N.C. 27606
 License No. F-0377
 Bus: 919 851 8077
 Fax: 919 851 8107

TRANSPORTATION PLANNING/DESIGN - BRIDGE/STRUCTURE DESIGN
 CIVIL/SITE DESIGN - GIS/GPS - SURVEY/SUE - UTILITIES - CONSTRUCTION OBSERVATION



MATCHLINE -L- STA. 198+00 SEE SHEET U0-5



NCDOT FIBER IS FOR REFERENCE ONLY
 SEE UC PLANS FOR CONSTRUCTION

ABANDON NCDOT FIBER
 (NCDOT)

BEGIN GUARDRAIL
 -L- STA 202+68 LT

END WESTBOUND DETOUR
 -DET-WBL- POT Sta. 203+11.98
 -L- ST Sta. 203+10.99, 19.5' LT

REMOVE WOODED DEBRIS
 PAYMENT WILL BE MADE UNDER
 PAYITEM FOR CLEARING AND GRUBBING.

END GRADE
 BEGIN MILL, OVERLAY, &
 PAVED SHOULDER REPLACEMENT
 -L- STA. 204+50.00

END GUARDRAIL
 -L- STA 208+00 LT
 TIE TO EXISTING GUARDRAIL

END TIP PROJECT HB-0003
 -L- STA. 208+00.00

END GUARDRAIL
 -L- STA 208+00 RT
 TIE TO EXISTING GUARDRAIL

POWER POLE TO REMAIN
 (DUKE ENERGY)

OVERHEAD TRANSMISSION POWER LINES TO REMAIN
 (DUKE ENERGY)

END EASTBOUND DETOUR
 -L- POT Sta. 208+00.00, 19.5' RT

PROPOSED UNDERGROUND TELEPHONE
 TIE INTO EXISTING
 (AT&T)

OVERHEAD POWER TO REMAIN
 (DUKE ENERGY)

REMOVE TELEPHONE
 (AT&T)

PROPOSED OVERHEAD TELEPHONE
 (AT&T)

FORCE MAIN TO REMAIN
 (PACTIV EVERGREEN PAPER PLANT)

1
 BLUE RIDGE PAPER PRODUCTS INC.
 DB 472 PG 1073

8/17/99
 2:44:37 PM
 P:\2003\23128.01_HB-0003\Utilities\Engineering\UB0\Proj\HB0003.ut_r.dwg.U06.psh.dgn
 4/3/2024