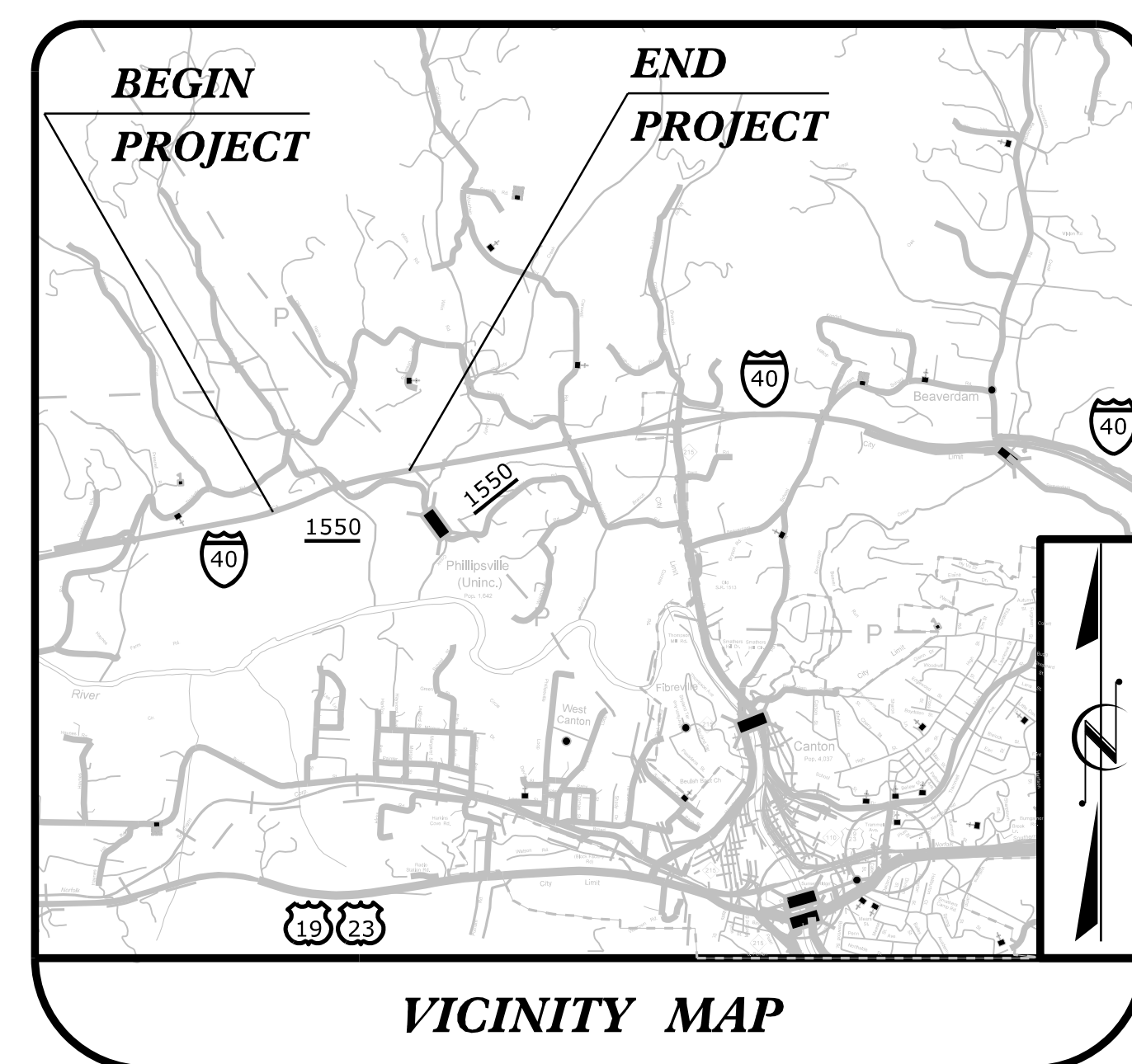
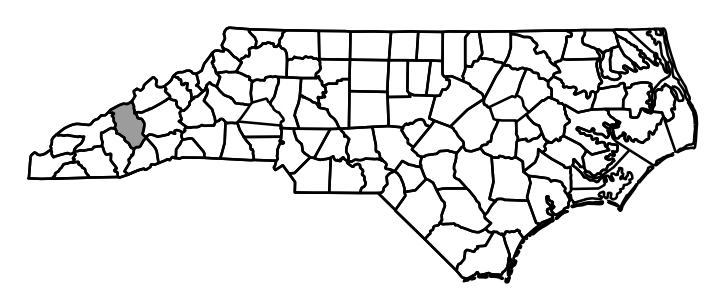


09/05/24

TIP PROJECT: HB-0003

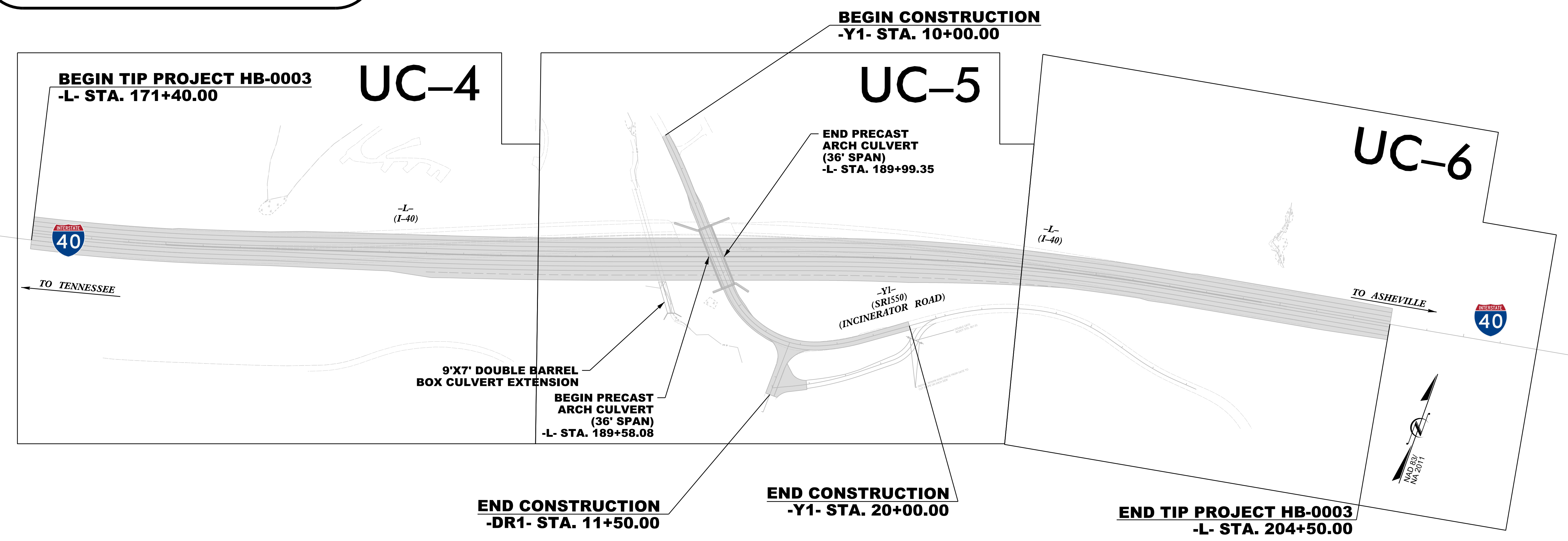
T.I.P. NO.	SHEET NO.
HB-0003	UC-1



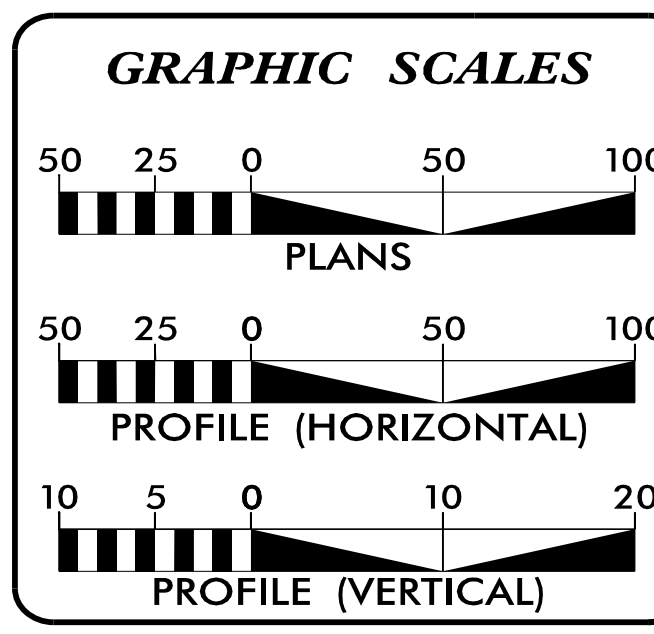
STATE OF NORTH CAROLINA  
DIVISION OF HIGHWAYS

**UTILITY CONSTRUCTION PLANS**  
**HAYWOOD COUNTY**

**LOCATION: BRIDGE 239 ON I-40 OVER SRI550 (INCINERATOR ROAD)**  
**TYPE OF WORK: UTILITY CONSTRUCTION OF FORCE MAIN SEWER**



DOCUMENT NOT CONSIDERED FINAL  
UNTIL ALL SIGNATURES ARE COMPLETED



**INDEX OF SHEETS**

SHEET NO.:	DESCRIPTION:
UC-1	TITLE SHEET
UC-2	UTILITY SYMBOLOGY
UC-3	NOTES
UC-3A	DETAILS
UC-4 THRU UC-6	UTILITY CONSTRUCTION SHEETS
UC-7	PROFILE SHEET

**WATER AND SEWER OWNERS ON PROJECT**

(A) SEWER - PACTIV EVERGREEN PAPER PLANT

(B) COMMUNICATIONS - NCDOT

PREPARED IN THE OFFICE OF

**WETHERILL ENGINEERING**

1223 Jones Franklin Rd.  
Raleigh, N.C. 27606  
License No. F-0377  
Bus: 919 851 8077  
Fax: 919 851 8107

TRANSPORTATION PLANNING/DESIGN - BRIDGE/STRUCTURE DESIGN  
CIVIL/SITE DESIGN - GIS/GPS - SURVEY/SUE - UTILITIES - CONSTRUCTION OBSERVATION

**PANKIL K. PATEL**      UTILITY PROJECT MANAGER  
**TREVER REEVES**      UTILITY COORDINATOR

SEAL

6/7/2024

**NORTH CAROLINA PROFESSIONAL ENGINEER**  
**EDWARD G. WETHERILL**  
10773

Witnessed by:  
**Edward G. Wetherill**

**DIVISION OF HIGHWAYS**  
**DIVISION 14**  
253 Webster Road  
Sylva, NC, 28779

**ZACH SHULER, PE**      BRIDGE PROGRAM MANAGER  
**ROBERT GOLDING**      DIVISION UTILITY COORDINATOR

4/7/2024  
HB-0003-ut-fsh-UC1-psh.dgn  
USER:Treves

# STATE OF NORTH CAROLINA DIVISION OF HIGHWAYS

**WETHERILL ENGINEERING**  
 1223 Jones Franklin Rd.  
 Raleigh, N.C. 27606  
 License No. F-0377  
 Bus: 919 851 8077  
 Fax: 919 851 8107

TRANSPORTATION PLANNING/DESIGN - BRIDGE/STRUCTURE DESIGN  
 CIVIL/SITE DESIGN - GIS/GIS - SURVEY/SUE - UTILITIES - CONSTRUCTION OBSERVATION

PROJECT REFERENCE NO.	SHEET NO.
HB-0003	UC-2
<b>DOCUMENT NOT CONSIDERED FINAL UNLESS ALL SIGNATURES COMPLETED</b>	
<b>UTILITY CONSTRUCTION</b>	

## UTILITIES PLAN SHEET SYMBOLS

### PROPOSED WATER SYMBOLS

Water Line (Sized as Shown)	
11 1/4 Degree Bend	
22 1/2 Degree Bend	
45 Degree Bend	
90 Degree Bend	
Plug	
Tee	
Cross	
Reducer	
Gate Valve	
Butterfly Valve	
Tapping Valve	
Line Stop	
Line Stop with Bypass	
Blow Off	
Fire Hydrant	
Relocate Fire Hydrant	
Remove Fire Hydrant	REM FH
Water Meter	
Relocate Water Meter	
Remove Water Meter	REM WM
Water Pump Station	
RPZ Backflow Preventer	
DCV Backflow Preventer	
Relocate RPZ Backflow Preventer	
Relocate DCV Backflow Preventer	

### PROPOSED SEWER SYMBOLS

Gravity Sewer Line (Sized as Shown)	
Force Main Sewer Line (Sized as Shown)	
Manhole (Sized per Note)	
Sewer Pump Station	

### PROPOSED MISCELLANEOUS UTILITIES SYMBOLS

Power Pole	
Telephone Pole	
Joint Use Pole	
Telephone Pedestal	
Utility Line by Others (Type as Shown)	
Trenchless Installation	
Encasement by Open Cut	
Encasement	

Thrust Block	
Air Release Valve	
Utility Vault	
Concrete Pier	
Steel Pier	
Remove Pole	REM
Plan Note	
Pay Item Note	

### EXISTING UTILITIES SYMBOLS

Power Pole	
Telephone Pole	
Joint Use Pole	
Utility Pole	
Utility Pole with Base	
H-Frame Pole	
Power Transmission Line Tower	
Water Manhole	
Power Manhole	
Telephone Manhole	
Sanitary Sewer Manhole	
Hand Hole for Cable	
Power Transformer	
Telephone Pedestal	
CATV Pedestal	
Gas Valve	
Gas Meter	
Located Miscellaneous Utility Object	
Abandoned According to Utility Records	AATUR
End of Information	E.O.I.

*Underground Power Line	
*Underground Telephone Cable	
*Underground Telephone Conduit	
*Underground Fiber Optics Telephone Cable	
*Underground TV Cable	
*Underground Fiber Optics TV Cable	
*Underground Gas Pipeline	
Aboveground Gas Pipeline	
*Underground Water Line	
Aboveground Water Line	
*Underground Gravity Sanitary Sewer Line	
Aboveground Gravity Sanitary Sewer Line	
*Underground SS Forced Main Line	
Underground Unknown Utility Line	
SUE Test Hole	
Water Meter	
Water Valve	
Fire Hydrant	
Sanitary Sewer Cleanout	

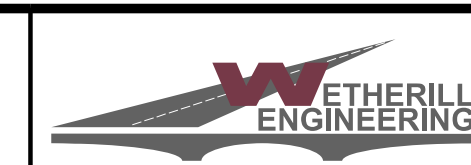
\*For Existing Utilities  
 Utility Line Drawn from Record (Type as Shown)

Designated Utility Line (Type as Shown)

5/14/99

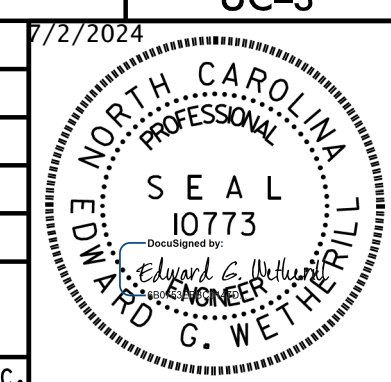


# UTILITY CONSTRUCTION



1223 Jones Franklin Rd.  
Raleigh, N.C. 27606  
License No. F-0377  
Bus: 919 851 8077  
Fax: 919 851 8107

TRANSPORTATION PLANNING/DESIGN - BRIDGE/STRUCTURE DESIGN  
CIVIL/SITE DESIGN - GIS/GPS - SURVEY/SUE - UTILITIES - CONSTRUCTION OBSERVATION

PROJECT REFERENCE NO. <b>HB-0003</b>	SHEET NO. <b>UC-3</b>
DESIGNED BY: <b>PKP</b>	
DRAWN BY: <b>TWR</b>	
CHECKED BY: <b>PKP</b>	
APPROVED BY: <b>SLK</b>	
REVISED:	
NORTH CAROLINA DEPARTMENT OF TRANSPORTATION UTILITIES ENGINEERING SEC. PHONE: (919) 707-6690 FAX: (919) 250-4151	
<b>DOCUMENT NOT CONSIDERED FINAL UNLESS ALL SIGNATURES COMPLETED</b>	
<b>UTILITY CONSTRUCTION</b>	

**GENERAL NOTES:**

1. THE PROPOSED UTILITY CONSTRUCTION SHALL MEET THE APPLICABLE REQUIREMENTS OF THE NC DEPARTMENT OF TRANSPORTATIONS "STANDARD SPECIFICATIONS FOR ROADS AND STRUCTURES" DATED JANUARY 2024.
2. THE EXISTING UTILITIES BELONG TO PACTIV EVERGREEN. CONTACT MR. JAMES CLARY, MILL MANAGER, AT 828-226-8716.
3. ALL WATER LINES TO BE INSTALLED WITHIN COMPLIANCE OF THE RULES AND REGULATIONS OF THE NORTH CAROLINA DEPARTMENT OF ENVIRONMENTAL QUALITY, DIVISION OF WATER RESOURCES, PUBLIC WATER SUPPLY SECTION. ALL SEWER LINES TO BE INSTALLED WITHIN COMPLIANCE OF THE RULES AND REGULATIONS OF THE NORTH CAROLINA DEPARTMENT OF ENVIRONMENT QUALITY, DIVISION OF WATER RESOURCES, WATER QUALITY SECTION. PERFORM ALL WORK IN ACCORDANCE WITH THE APPLICABLE PLUMBING CODES.
4. THE UTILITY OWNER OWNS THE EXISTING UTILITY FACILITIES AND WILL OWN THE NEW UTILITY FACILITIES AFTER ACCEPTANCE BY THE DEPARTMENT. THE DEPARTMENT OWNS THE CONSTRUCTION CONTRACT AND HAS ADMINISTRATIVE AUTHORITY. COMMUNICATIONS AND DECISIONS BETWEEN THE CONTRACTOR AND UTILITY OWNER ARE NOT BINDING UPON THE DEPARTMENT OR THIS CONTRACT UNLESS AUTHORIZED BY THE ENGINEER. AGREEMENTS BETWEEN THE UTILITY OWNER AND CONTRACTOR FOR THE WORK THAT IS NOT PART OF THIS CONTRACT OR IS SECONDARY TO THIS CONTRACT ARE ALLOWED, BUT ARE NOT BINDING UPON THE DEPARTMENT.
5. PROVIDE ACCESS FOR THE DEPARTMENT PERSONNEL AND THE OWNER'S REPRESENTATIVES TO ALL PHASES OF CONSTRUCTION. NOTIFY DEPARTMENT PERSONNEL AND THE UTILITY OWNER TWO WEEKS PRIOR TO COMMENCEMENT OF ANY WORK AND ONE WEEK PRIOR TO SERVICE INTERRUPTION. KEEP UTILITY OWNERS' REPRESENTATIVES INFORMED OF WORK PROGRESS AND PROVIDE OPPORTUNITY FOR INSPECTION OF CONSTRUCTION AND TESTING.
6. THE PLANS DEPICT THE BEST AVAILABLE INFORMATION FOR THE LOCATION, SIZE, AND TYPE OF MATERIAL FOR ALL EXISTING UTILITIES. MAKE INVESTIGATIONS FOR DETERMINING THE EXACT LOCATION, SIZE, AND TYPE MATERIAL OF THE EXISTING FACILITIES AS NECESSARY FOR THE CONSTRUCTION OF THE PROPOSED UTILITIES AND FOR AVOIDING DAMAGE TO EXISTING FACILITIES. REPAIR ANY DAMAGE INCURRED TO EXISTING FACILITIES TO THE ORIGINAL OR BETTER CONDITION AT NO ADDITIONAL COST TO THE DEPARTMENT.
7. MAKE FINAL CONNECTIONS OF THE NEW WORK TO THE EXISTING SYSTEM WHERE INDICATED ON THE PLANS, AS REQUIRED TO FIT THE ACTUAL CONDITIONS, OR AS DIRECTED.
8. MAKE CONNECTIONS BETWEEN EXISTING AND PROPOSED UTILITIES AT TIMES MOST CONVENIENT TO THE PUBLIC, WITHOUT ENDANGERING THE UTILITY SERVICE, AND IN ACCORDANCE WITH THE UTILITY OWNER'S REQUIREMENTS. MAKE CONNECTIONS ON WEEKENDS, AT NIGHT, AND ON HOLIDAYS IF NECESSARY.
9. ALL UTILITY MATERIALS SHALL BE APPROVED PRIOR TO DELIVERY TO THE PROJECT. SEE 1500-7, "SUBMITTALS AND RECORDS" IN SECTION 1500 OF THE STANDARD SPECIFICATIONS.
10. CONTRACTOR IS RESPONSIBLE FOR MONITORING AND REPAIRING ANY ISSUES THAT ARISE FROM THE TEMPORARY DRIVEWAY ENTRANCE, ARV MANHOLE, AND PIPE CONNECTIONS.
11. CONTRACTOR IS RESPONSIBLE FOR THE RESTORATION OF THE SITE ONCE WORK IS COMPLETED (REMOVAL OF TEMPORARY DRIVEWAY ENTRANCE, REVEGETATION, ETC.).
12. WATER MAINS SHALL BE LAID AT LEAST 10 FEET LATERALLY FROM EXISTING OR PROPOSED SEWER MAINS.

**PROJECT SPECIFIC NOTES:**

1. PROPOSED FORCE MAIN SEWER LINE (FSS-1) SHALL BE 6" PVC C900 DR18, INSTALLED BY OPEN CUT METHOD.
2. EXISTING AIR RELEASE VALVE AT -EY1- (INCINERATOR RD) STA. 20+30± SHALL HAVE 6" THICK CONCRETE COLLAR INSTALLED AROUND EXISTING MANHOLE, AND THE EXISTING MANHOLE LID SHALL BE REPLACED WITH AN HS-25 RATED LID.
3. CONTRACTOR TO BORE PROPOSED NCDOT CONDUITS FROM JUNCTION BOX TO JUNCTION BOX. IF HDD RIG CANNOT HANDLE ADDITIONAL RODS, CONTRACTOR SHOULD BORE FROM A MID-SPAN POINT (BORE PIT) BOTH WAYS TO EACH RESPECTIVE JUNCTION BOX, THEN COUPLE (E-LOC) THE CONDUITS TOGETHER.

**SEWER INSTALLATION NOTES**

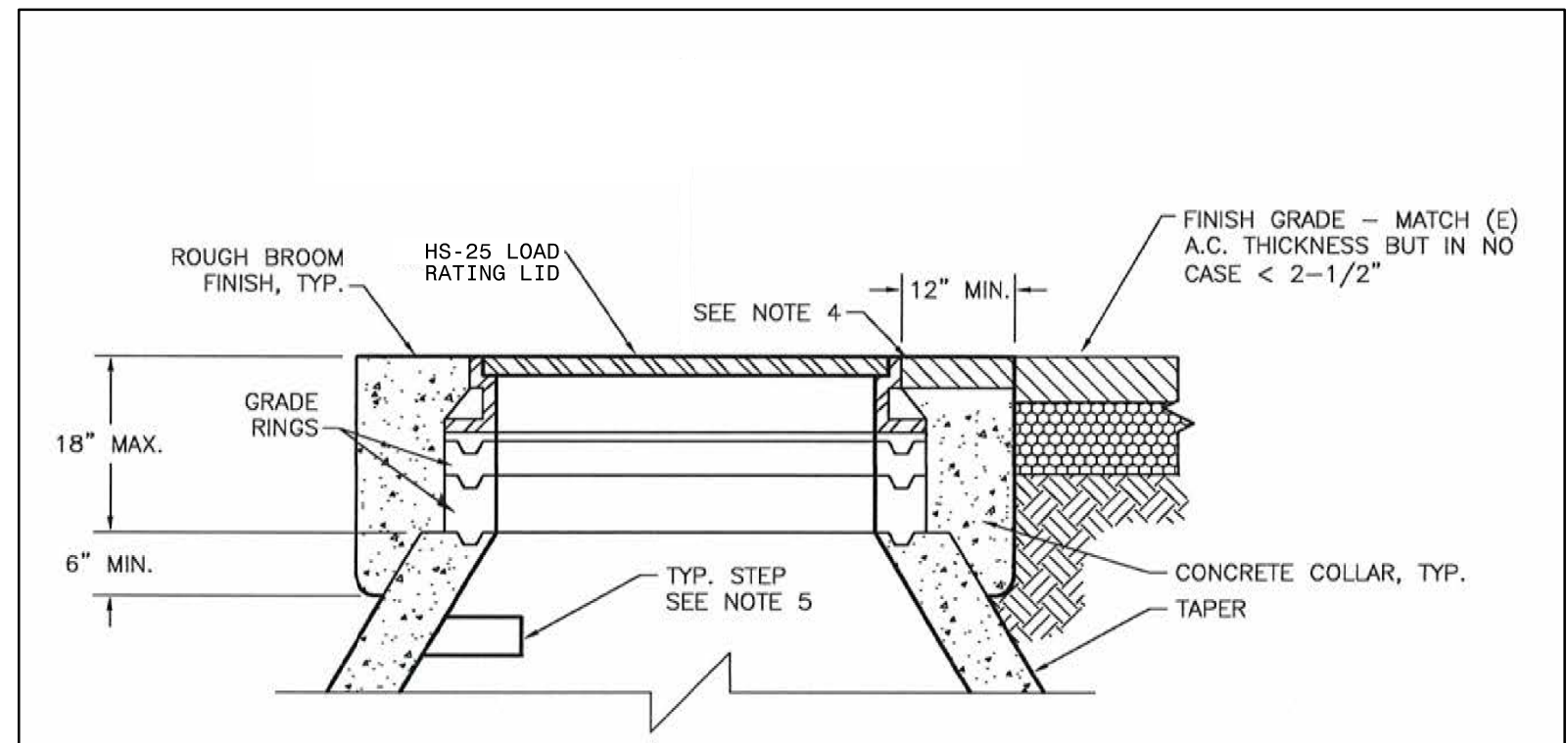
1. CONTRACTOR SHALL FULLY INSTALL, PRESSURE & LEAKAGE TEST NEW SEWER MAIN PRIOR TO CONNECTION TO EXISTING SYSTEM.
2. CONTRACTOR SHALL PERFORM THE CONNECTION DURING OFF PEAK HOURS WITH A MAXIMUM SHUT DOWN TIME OF FIVE HOURS. CONTRACTOR TO COORDINATE WITH LANDFILL OWNER FOR WORKING HOURS PRIOR TO CONSTRUCTION.
3. DOWN TIME FOR FORCE MAIN SEWER SHALL BE DETERMINED BY LANDFILL OWNER PRIOR TO CONSTRUCTION AND COORDINATED WITH CONTRACTOR.
3. ANY TEST PERFORMED WITHOUT NOTIFICATION TO TOWN SHALL BE PERFORMED AT THE CONTRACTOR'S RISK. TESTING SHALL BE PERFORMED IN THE PRESENCE OF PACTIV EVERGREEN PERSONNEL. CONTACT MR. JAMES CLARY AT 828-226-8716.
4. NEW SEWER MAIN SHALL NOT BE CONNECTED TO EXISTING MAIN WITHOUT PRIOR APPROVAL AND COORDINATION WITH PACTIV EVERGREEN.
5. FOR NEW SEWER MAIN CONNECTIONS, USE LONG PATTERN SLEEVE AND THRUST COLLAR AS REQUIRED.
6. TRACER WIRE SHALL BE INSTALLED ALONG THE ENTIRE LENGTH OF PROPOSED FORCE MAIN SEWER FSS-1.
7. EXISTING FORCE MAIN SEWER SHALL BE ABANDONED IN PLACE WITH FLOWABLE FILL BETWEEN TIE-IN LOCATIONS AFTER CONNECTIONS ARE COMPLETE. REFER TO UTILITY ACCOMMODATION MANUAL AND 2024 STANDARD SPECIFICATIONS.



# PROJECT TYPICAL DETAILS

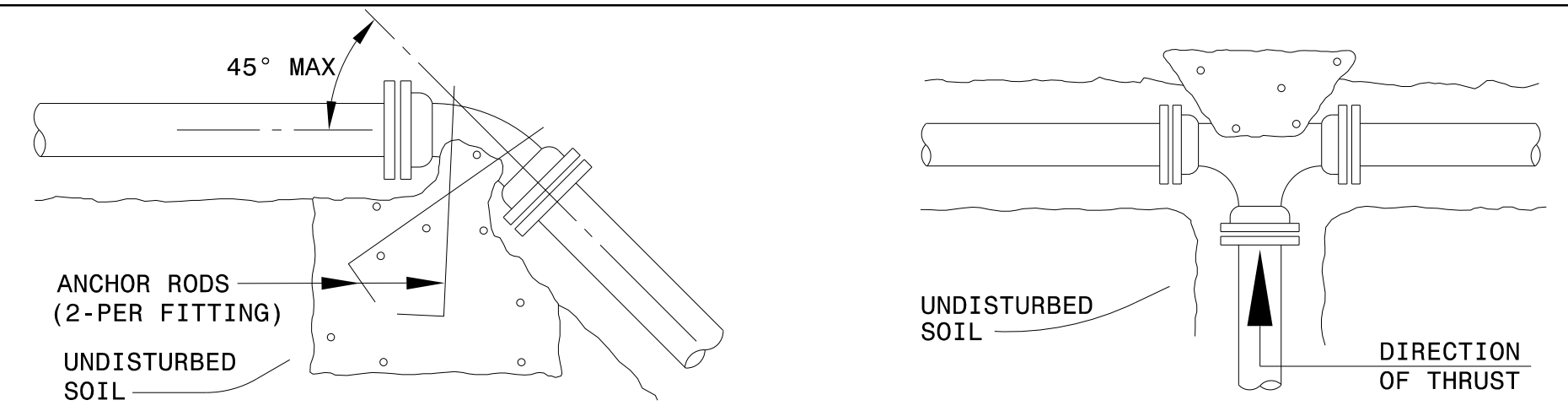
1223 Jones Franklin Rd.  
Raleigh, N.C. 27606  
License No. F-0377  
Bus: 919 851 8077  
Fax: 919 851 8107

PROJECT REFERENCE NO. <b>HB-0003</b>	SHEET NO. <b>UC-3A</b>
DESIGNED BY: <b>PKP</b>	
DRAWN BY: <b>TWR</b>	
CHECKED BY: <b>PKP</b>	
APPROVED BY: <b>SLK</b>	
REVISED:	
NORTH CAROLINA DEPARTMENT OF TRANSPORTATION	
UTILITIES ENGINEERING SEC. PHONE: (919) 707-6690 FAX: (919) 250-4151	UTILITY CONSTRUCTION PLANS ONLY
<b>DOCUMENT NOT CONSIDERED FINAL UNLESS ALL SIGNATURES COMPLETED</b>	
<b>UTILITY CONSTRUCTION</b>	

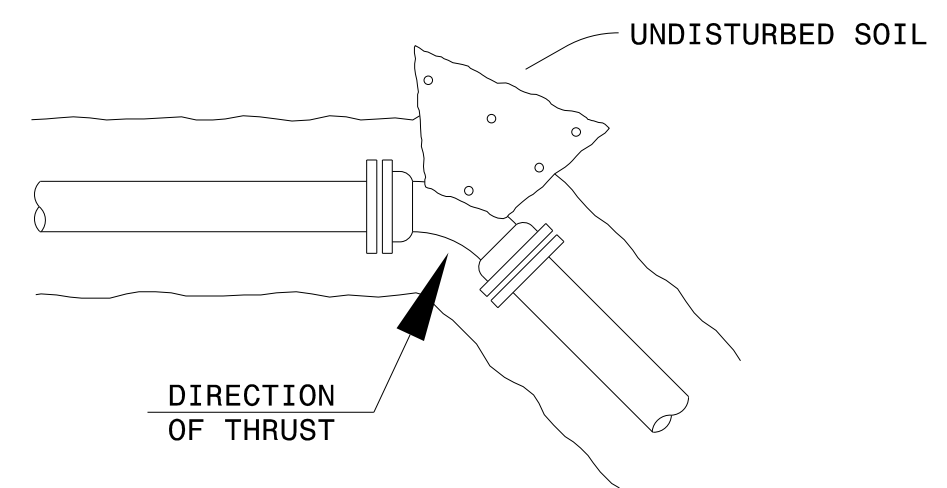


- NOTES:
1. CONCRETE COLLAR TO BE PORTLAND CEMENT CONCRETE (P.C.C.) WITH THE FOLLOWING CHARACTERISTICS: 4000 PSI MINIMUM COMPRESSIVE STRENGTH AT 28 DAYS, MINIMUM 6.25 SACKS OF CEMENT PER CU. YD. OF CONCRETE WITH A MAXIMUM WATER-CEMENT RATIO OF 0.45, AIR ENTRAINMENT 6% ±1.5%, SLUMP AT 1 TO 4 INCHES.
  2. HEIGHT OF COLLAR SHALL BE CONSISTENT ALL AROUND MANHOLE.
  3. MANHOLE RING SHALL BE SET 3/8"-5/8" BELOW FINISH ROADWAY SURFACE. MANHOLES IN ALL OTHER AREAS SHALL BE SET FLUSH WITH FINISH GRADE UNLESS OTHERWISE NOTED.
  4. CONCRETE COLLAR SHALL BE LEFT 2" BELOW FINISH ASPHALT SURFACE. PLACE 2" THICK TYPE 3 A.C. PAVING AROUND MANHOLES & APPLY SS-1 TACK COAT BEFORE PAVING. SEAL A.C. SURFACE WITH SS-1 & SAND CHIP SEAL, SLURRY SEAL, SAND SEAL, OR FOG SEAL PAVED SURFACE AS REQUIRED BY PLANS OR SPECS. EXCEPTION - EXTEND CONCRETE COLLAR TO FINISH GRADE WHEN NOT LOCATED IN ASPHALT PAVEMENT OR IN AN UNPAVED AREA.
  5. STEPS ARE REQUIRED FOR SANITARY SEWER/STORM DRAIN MANHOLES OF 5 FEET OR GREATER DEPTH.

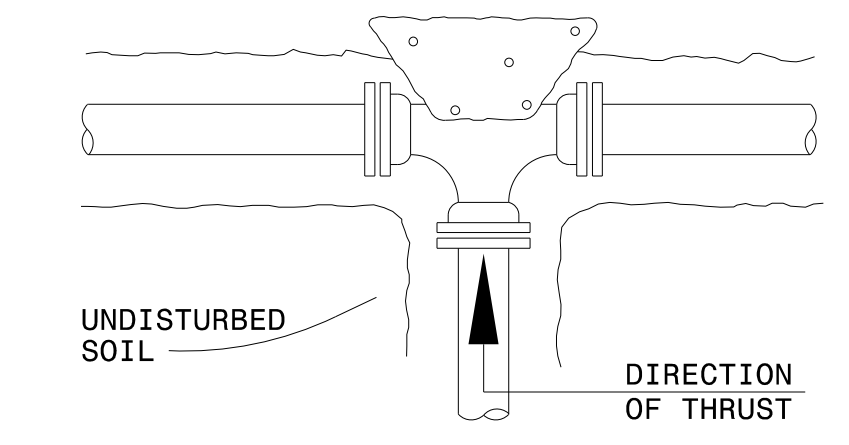
**MANHOLE CONCRETE COLLAR**



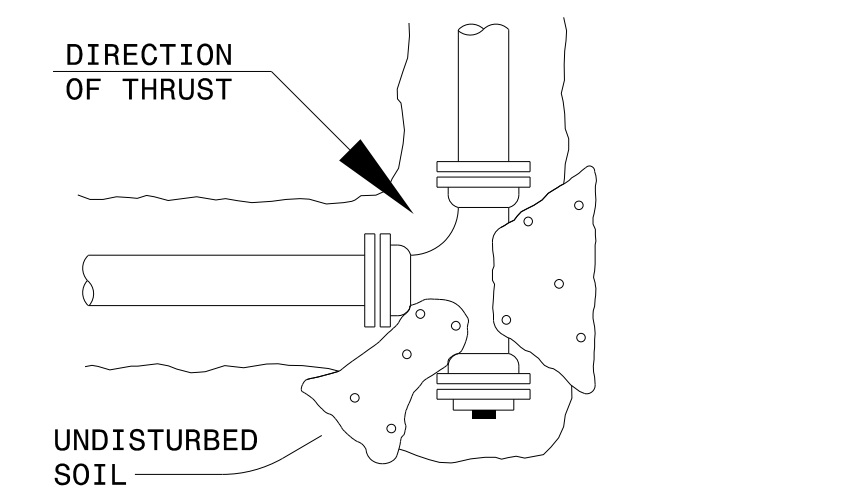
**VERTICAL BENDS AND ANCHORS**



**HORIZONTAL BENDS**



**TEE**

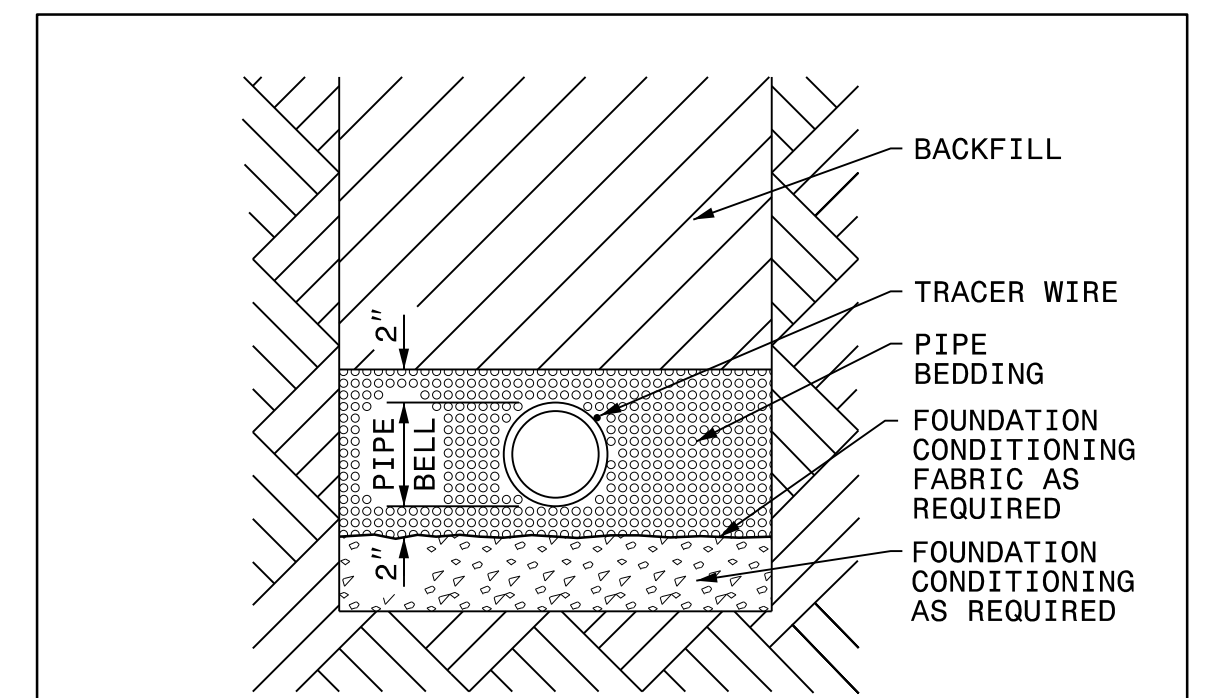


**TEE AND PLUG**

FITTING SIZE	CONCRETE THRUST BLOCKING SCHEDULE					CONCRETE SCHEDULE VERTICAL BENDS					ANCHOR ROD SIZE FOR VERTICAL BEND AND ANCHORS
	TEE/PLUG	BEARING AREA IN SQUARE FEET				MIN. CU. YARDS CONCRETE					
		90°	45°	22-1/2°	11-1/4°	90°	45°	22-1/2°	11-1/2°		
4"	1	2	1	1	1	1	1	1	1	1/2"	
6"	3	3	2	1	1	1	1	1	1	3/4"	
8"	4	6	3	2	1	2	2	1	1		
10"	7	9	5	3	2	3	3	2	1	7/8"	
12"	9	12	7	4	2	5	3	2	1		
14"	12	17	9	5	3	6	4	3	2	1-1/8"	
16"	16	22	12	6	3	8	6	3	2		
18"	20	27	15	8	4	10	7	4	2	1-3/8"	
20"	24	34	18	10	5	12	9	5	3		
24"	34	48	26	14	7	17	12	7	4		
30"	53	75	41	21	11	27	19	10	5		
36"	77	108	59	30	15	38	27	15	8		

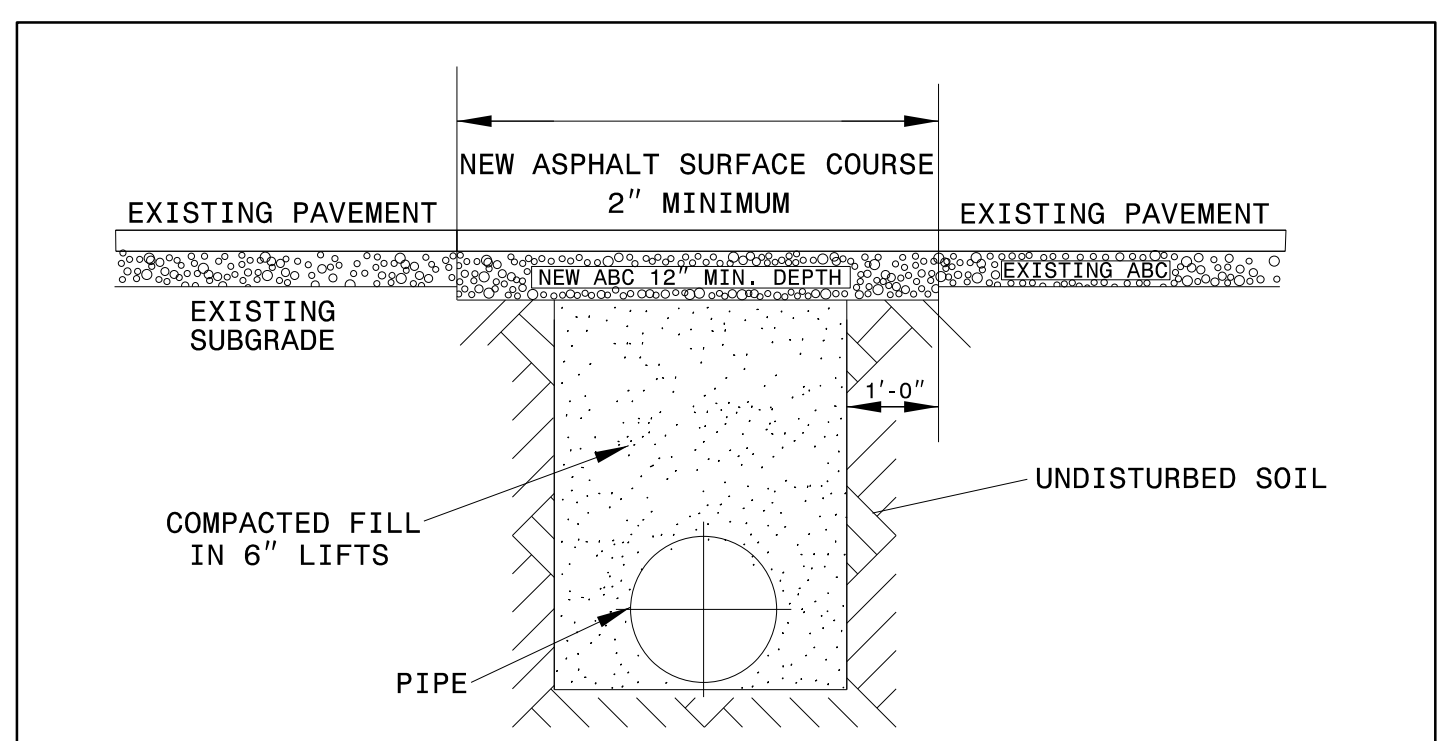
- NOTES:
1. MINIMUM BEARING AREA (IN SQUARE FEET) AGAINST UNDISTURBED TRENCH WALL OF SAND.
  2. AREAS SHOWN ARE FOR 150 PSI TEST PRESSURE. IF TEST PRESSURE IS OTHER THAN 150 PSI, ADJUST AREA OF REACTION BACKING IN DIRECT PROPORTION.
  3. OTHER SOIL CONDITIONS : CEMENTED SAND OR HARDPAN - MULTIPLY ABOVE BY 0.5  
GRAVEL OR HARD DRY CLAY - MULTIPLY ABOVE BY 0.7  
SOFT CLAY - MULTIPLY ABOVE BY 2.0  
MUCK : SECURE ALL FITTINGS WITH APPROVED HARNESS OR TIE ROD CLAMPS, WITH CONCRETE REACTION BACKING THE SAME AS LISTED FOR SAND CONDITIONS.

**THRUST BLOCKING AND ANCHORING**



PLACE FOUNDATION CONDITIONING MATERIAL BELOW BEDDING IF REQUIRED, AS DIRECTED BY ENGINEER. PIPE BEDDED IN SELECT MATERIAL, CLASS II (TYPE 1) OR CLASS III. TRENCH BACKFILLED IN LOOSE 6" LAYERS COMPACTED TO TOP OF TRENCH USING LOCAL EXCAVATED MATERIAL IF APPROVED BY THE ENGINEER, OR SELECT MATERIAL. ALL MATERIAL SHALL BE FREE OF ROCKS, FOREIGN MATERIAL, AND FROZEN EARTH. COMPACTION SHALL BE TO APPROXIMATELY 95% DENSITY IN ACCORDANCE WITH AASHTO T-99 AS MODIFIED BY THE DEPARTMENT OF TRANSPORTATION.

**TRENCH DETAIL**



- NOTES:
1. IN NCDOT MAINTAINED ROADWAYS ENCROACHMENT PAVEMENT PATCH REQUIREMENTS SHALL TAKE PRECEDENCE.
  2. THE PAVEMENT CUT SHALL BE DEFINED BY A STRAIGHT EDGE AND CUT WITH AN APPROPRIATE SAWCUT MACHINE.
  3. THE TRENCH SUBGRADE MATERIAL SHALL BE BACKFILLED WITH SUITABLE MATERIAL AND COMPACTED TO A DENSITY OF AT LEAST 95% OF THAT OBTAINED BY COMPACTING A SAMPLE OF THE MATERIAL IN ACCORDANCE WITH AASHTO T-99 AS MODIFIED BY NCDOT.
  4. THE FINAL 1' OF FILL SHALL CONSIST OF ABC MATERIAL COMPACTED TO A DENSITY EQUAL TO 100% OF THAT OBTAINED BY COMPACTING A SAMPLE OF THE MATERIAL IN ACCORDANCE WITH AASHTO T-80 AS MODIFIED BY NCDOT.
  5. THE ENTIRE THICKNESS AND VERTICAL EDGE OF CUT SHALL BE TACKED.
  6. THE SAME DEPTH OF PAVEMENT MATERIAL WHICH EXISTS SHALL BE REINSTALLED, BUT IN NO CASE SHALL THE ASPHALT BE LESS THAN 2" THICK.
  7. THE ASPHALT PAVEMENT MATERIAL SHALL BE INSTALLED AND COMPACTED THOROUGHLY WITH A SMOOTH DRUM ROLLER TO ACHIEVE A SMOOTH LEVEL PATCH.
  8. REFER TO NCDOT STANDARDS FOR TRENCHES AND PIPE BEDDING FOR ADDITIONAL DETAILS.
  9. NO HAND PATCHING ALLOWED.
  10. PAVEMENT CUTS WITHIN NCDOT ROW SHALL CONFORM TO THE APPROVED ON SITE ENCROACHMENT PERMIT.

**STANDARD ASPHALT PAVEMENT PATCH**

**LONG PATTERN SLEEVE AND THRUST COLLAR**











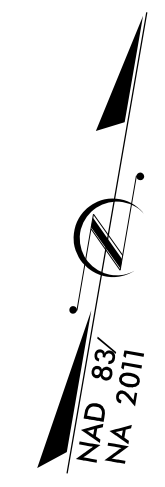
8/17/99

SEWER FACILITIES ARE NOT IN CONFLICT ON THIS SHEET

WETHERILL ENGINEERING  
TRANSPORTATION PLANNING/DESIGN - BRIDGE/STRUCTURE DESIGN  
CIVIL/SITE DESIGN - GIS/GPS - SURVEY/SUE - UTILITIES - CONSTRUCTION OBSERVATION

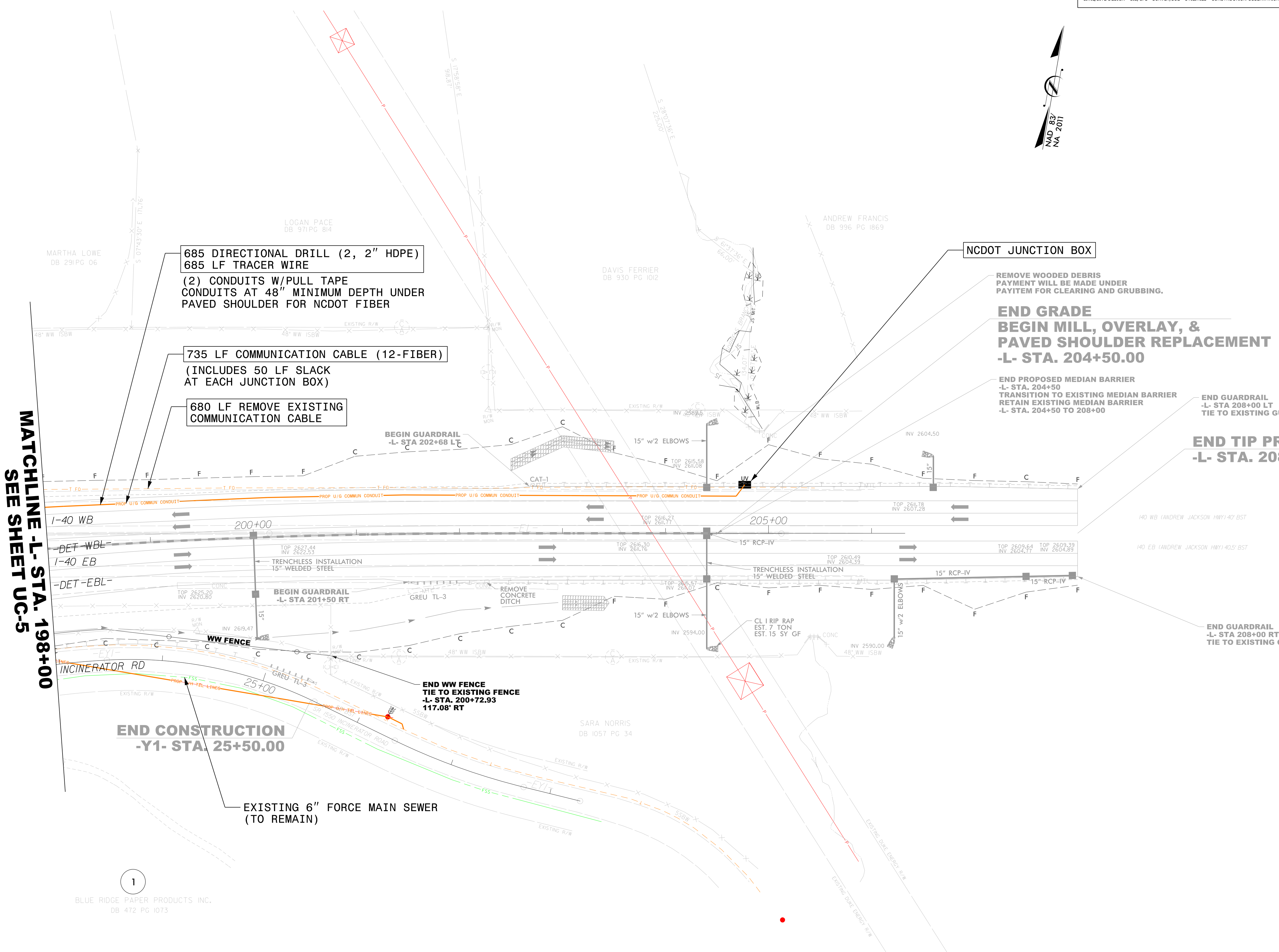
1223 Jones Franklin Rd.  
Raleigh, N.C. 27606  
License No. F-0377  
Bus: 919 851 8077  
Fax: 919 851 8107

PROJECT REFERENCE NO.	SHEET NO.
HB-0003	UC-6
DESIGNED BY: PKP	7/27/2024
DRAWN BY: TWR	
CHECKED BY: PKP	
APPROVED BY: SLK	
REVISED:	
NORTH CAROLINA DEPARTMENT OF TRANSPORTATION	
UTILITIES ENGINEERING SEC. PHONE: (919) 707-6690 FAX: (919) 250-4151	
<p><b>DOCUMENT NOT CONSIDERED FINAL UNLESS ALL SIGNATURES COMPLETED</b></p> <p>UTILITY CONSTRUCTION</p>	



MATCHLINE -L- STA. 198+00  
SEE SHEET UC-5

REVISIONS



685 DIRECTIONAL DRILL (2, 2" HDPE)  
685 LF TRACER WIRE  
(2) CONDUITS W/PULL TAPE  
CONDUITS AT 48" MINIMUM DEPTH UNDER  
PAVED SHOULDER FOR NCDOT FIBER

735 LF COMMUNICATION CABLE (12-FIBER)  
(INCLUDES 50 LF SLACK  
AT EACH JUNCTION BOX)

680 LF REMOVE EXISTING  
COMMUNICATION CABLE

NCDOT JUNCTION BOX

REMOVE WOODED DEBRIS  
PAYMENT WILL BE MADE UNDER  
PAYITEM FOR CLEARING AND GRUBBING.

END GRADE  
BEGIN MILL, OVERLAY, &  
PAVED SHOULDER REPLACEMENT  
-L- STA. 204+50.00

END PROPOSED MEDIAN BARRIER  
-L- STA. 204+50  
TRANSITION TO EXISTING MEDIAN BARRIER  
RETAIN EXISTING MEDIAN BARRIER  
-L- STA. 204+50 TO 208+00

END GUARDRAIL  
-L- STA 208+00 LT  
TIE TO EXISTING GUARDRAIL

END TIP PROJECT HB-0003  
-L- STA. 208+00.00

END GUARDRAIL  
-L- STA 208+00 RT  
TIE TO EXISTING GUARDRAIL

END CONSTRUCTION  
-Y1- STA. 25+50.00

END WW FENCE  
TIE TO EXISTING FENCE  
-L- STA. 200+72.93  
117.08' RT

EXISTING 6" FORCE MAIN SEWER  
(TO REMAIN)

1  
BLUE RIDGE PAPER PRODUCTS INC.  
DB 472 PG 1073

2:31:05 PM 8/17/2024  
C:\Users\pkp\Documents\Projects\UC-6\Addendum\HB-0003\ut-1\utils\Engineering\UC-6\Addendum\HB-0003\ut-1\utils\UC-6\_psh.dgn

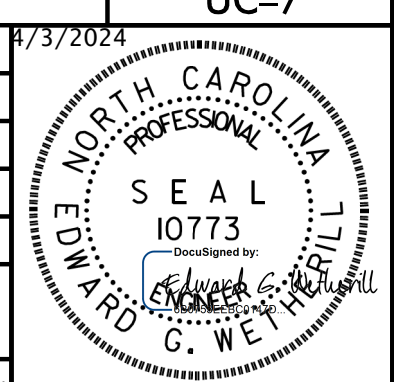
5/14/99

- NOTES:
1. LOCATION AND DEPTHS OF EXISTING UTILITIES ARE APPROXIMATE. CONTRACTOR TO FIELD VERIFY LOCATIONS AND DEPTHS PRIOR TO SEWER CONSTRUCTION.
  2. A MINIMUM OF 18" CLEARANCE MUST BE PROVIDED WHEN CROSSING A STORM SEWER, GRAVITY SEWER, OR WATER PIPE.
  3. CONTRACTOR TO BACKFILL OVER SEWER LINE PRIOR TO TESTING AND PLACING INTO SERVICE.

**WETHERILL ENGINEERING**  
 1223 Jones Franklin Rd.  
 Raleigh, N.C. 27606  
 License No. F-0377  
 Bus: 919 851 8077  
 Fax: 919 851 8107

TRANSPORTATION PLANNING/DESIGN - BRIDGE/STRUCTURE DESIGN  
 CIVIL/SITE DESIGN - GIS/GPS - SURVEY/SUE - UTILITIES - CONSTRUCTION OBSERVATION

PROJECT REFERENCE NO. <b>HB-0003</b>	SHEET NO. <b>UC-7</b>
DESIGNED BY: <b>PKP</b>	4/3/2024
DRAWN BY: <b>TWR</b>	
CHECKED BY: <b>PKP</b>	
APPROVED BY: <b>SLK</b>	
REVISED:	
NORTH CAROLINA DEPARTMENT OF TRANSPORTATION	UTILITY CONSTRUCTION PLANS ONLY
UTILITIES ENGINEERING SEC. PHONE: (919) 707-6690 FAX: (919) 250-4151	



**FSS - 1**



4/3/2024  
11:58:16 AM  
USER: TRAVES