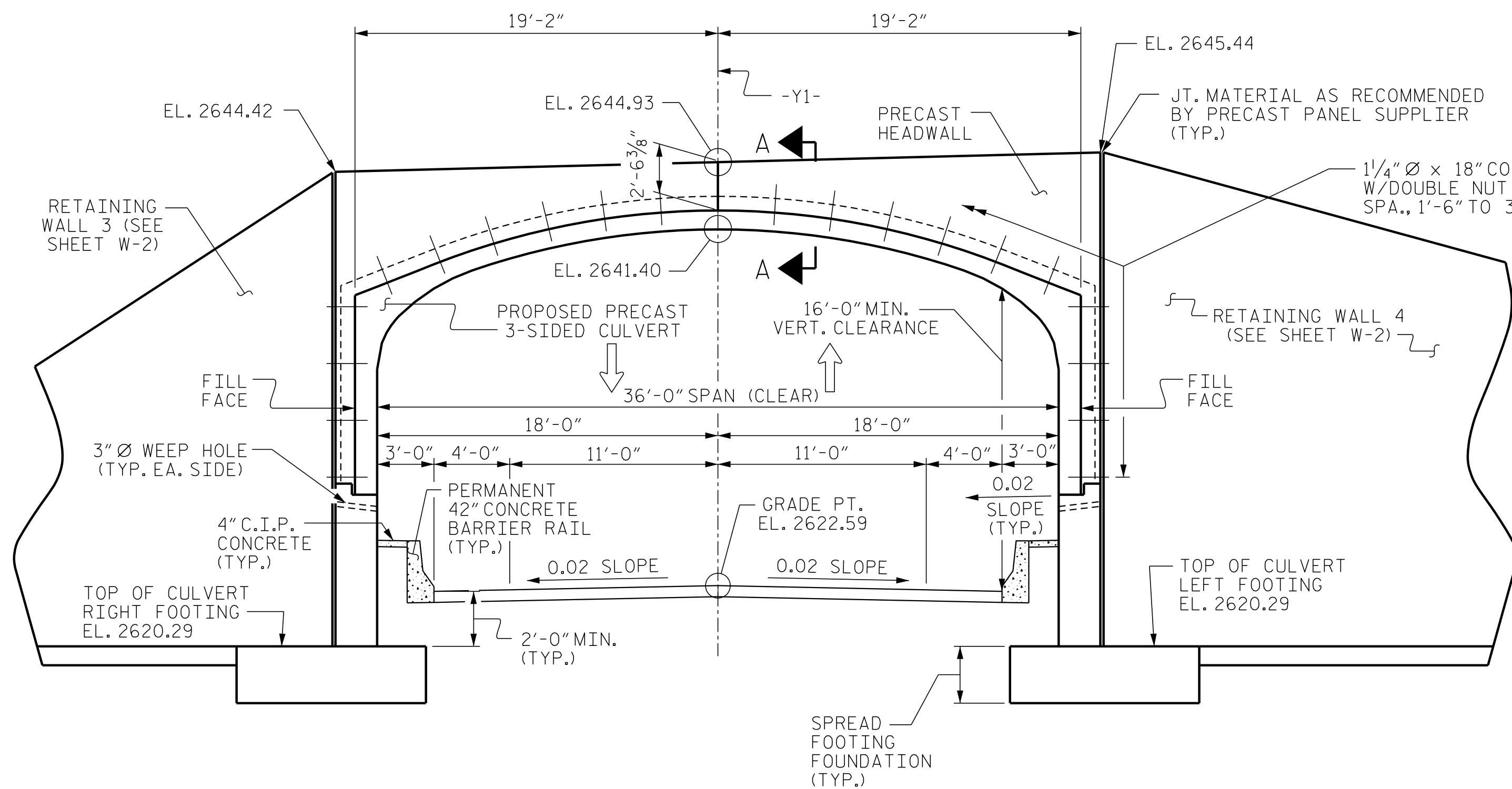
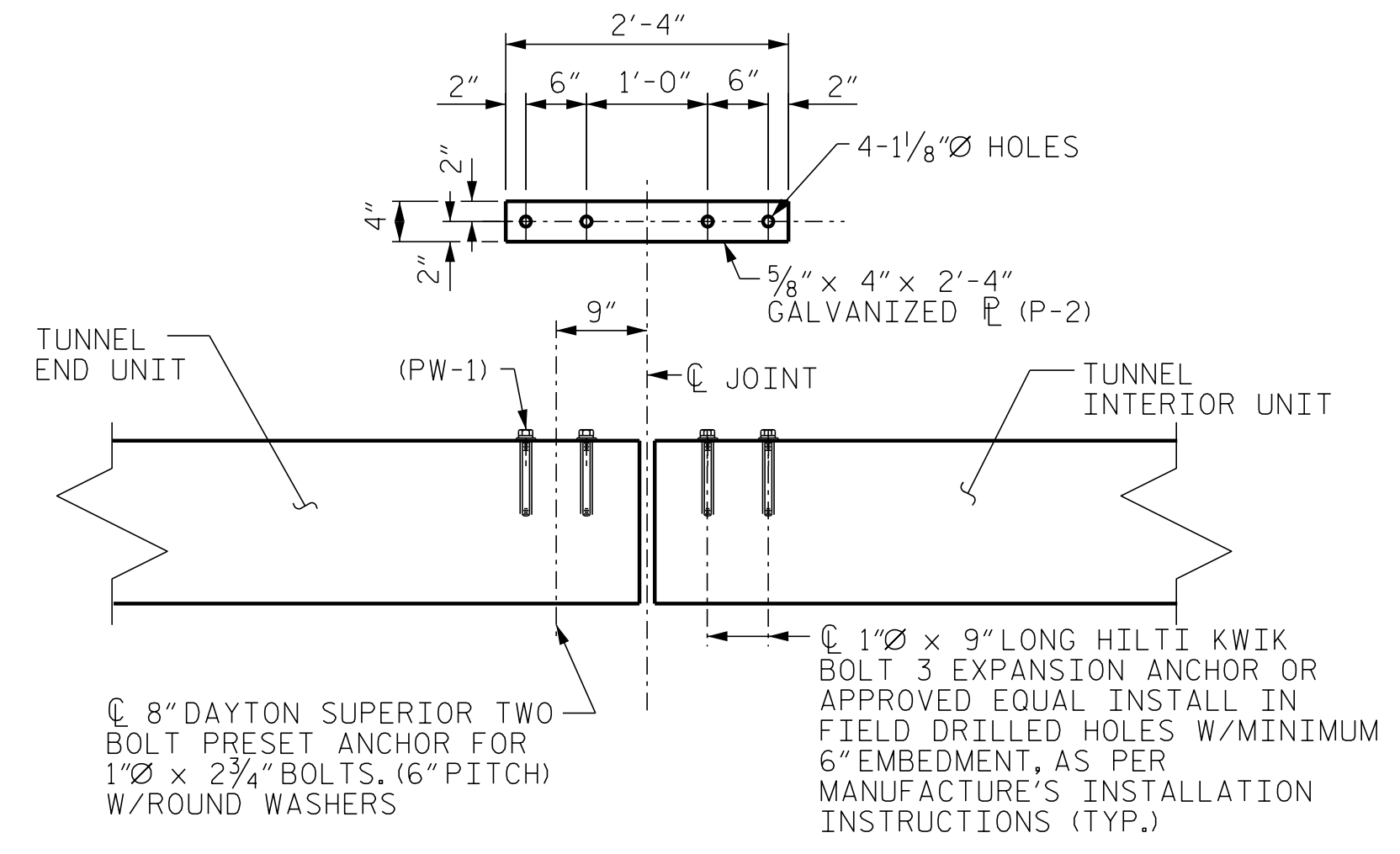


ENTRANCE VIEW
LOOKING AHEAD STATION
STA. 12+68.00 -Y1-



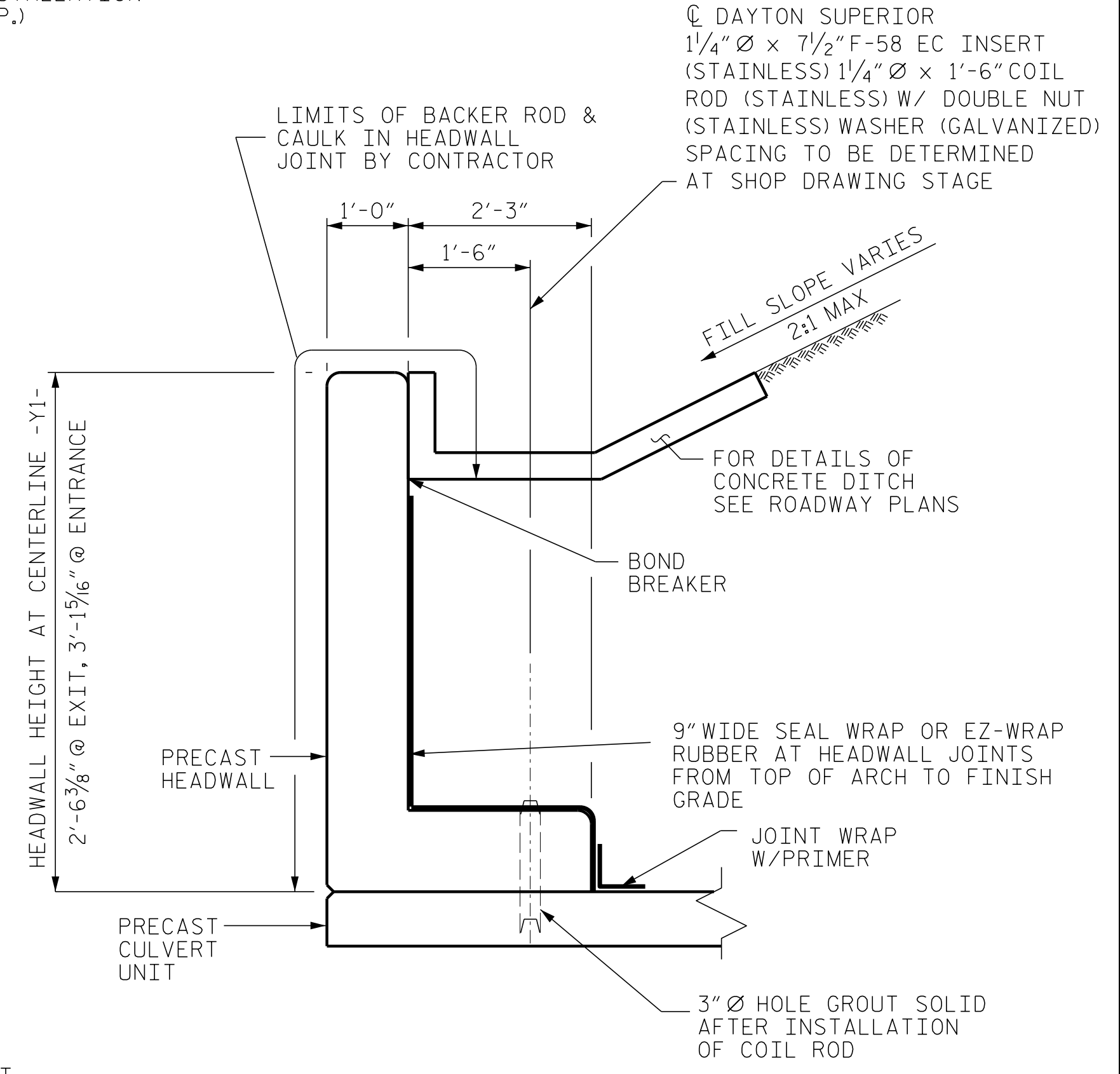
EXIT VIEW
LOOKING BACK STATION
STA. 14+42.00 -Y1-



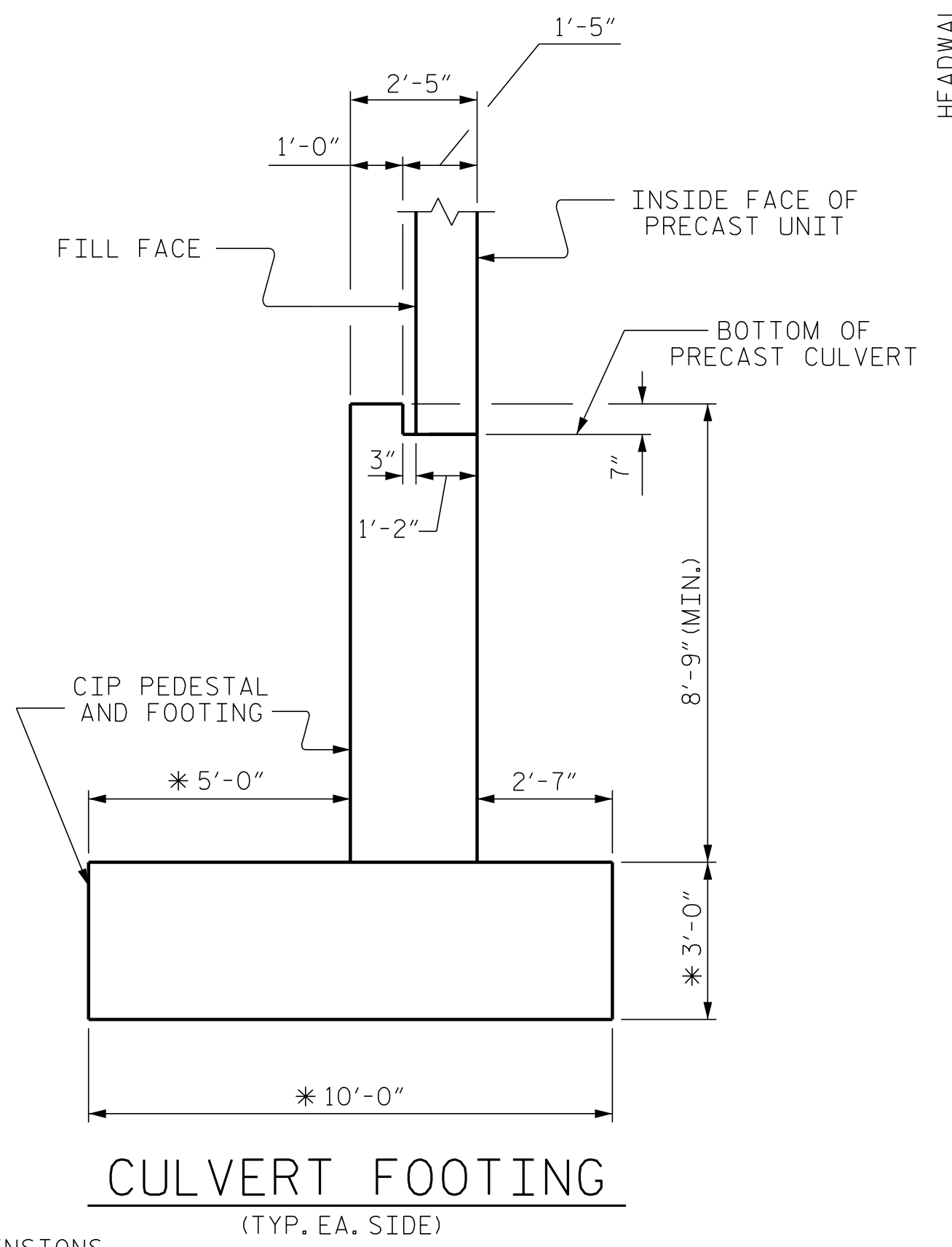
CONNECTOR DETAIL
SHOWING CONNECTION BETWEEN EXTERIOR
UNIT AND INTERIOR UNIT

ESTIMATED CLASS A CONCRETE QUANTITIES	
CLASS A CONCRETE (LEFT SIDE)	325 CU. YDS.
CLASS A CONCRETE (RIGHT SIDE)	325 CU. YDS.
CLASS A CONCRETE TOTAL	650 CU. YDS.

NOTE: NO SEPARATE PAYMENT WILL BE MADE FOR CLASS A CONCRETE. THE COST OF PROVIDING AND INSTALLING CLASS A CONCRETE IS INCLUDED IN THE LUMP SUM PRICE FOR CAST-IN-PLACE REINFORCED CONCRETE FOOTING FOR PRECAST CULVERT.



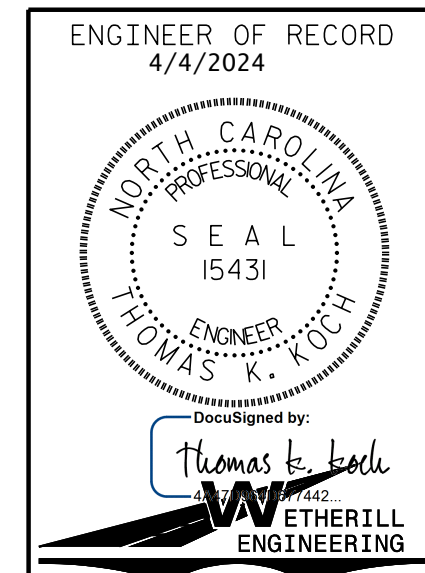
SECTION A-A



CULVERT FOOTING
(TYP. EA. SIDE)

PROJECT NO. HB-0003
HAYWOOD COUNTY
STATION: 189+78.72 -L-

SHEET 3 OF 5



STATE OF NORTH CAROLINA
DEPARTMENT OF TRANSPORTATION
RALEIGH
**PRECAST
3-SIDED ARCH
CULVERT
36'-0" SPAN
CULVERT END VIEWS**

REVISIONS		SHEET NO.	
NO.	BY:	DATE:	SHEET NO.
1			S-3
2			TOTAL SHEETS 5

* THESE DIMENSIONS ARE ESTIMATES FOR BIDDING PURPOSES.

DOCUMENT NOT CONSIDERED FINAL UNLESS ALL SIGNATURES COMPLETED

1223 Jones Franklin Rd.
Raleigh, N.C. 27606
Bus: 919 851 8077
Fax: 919 851 8107
LICENSE NO. F-0377

PA:2023\2312801_HB-0003_Structures\DWG\PRECAST_CULVERT\HB0003-3-PCAST-CUL.dgn
 4/4/2024 11:01:42 AM

DRAWN BY: D. HODGE DATE: 12/22
CHECKED BY: T. KOCH DATE: 9/23