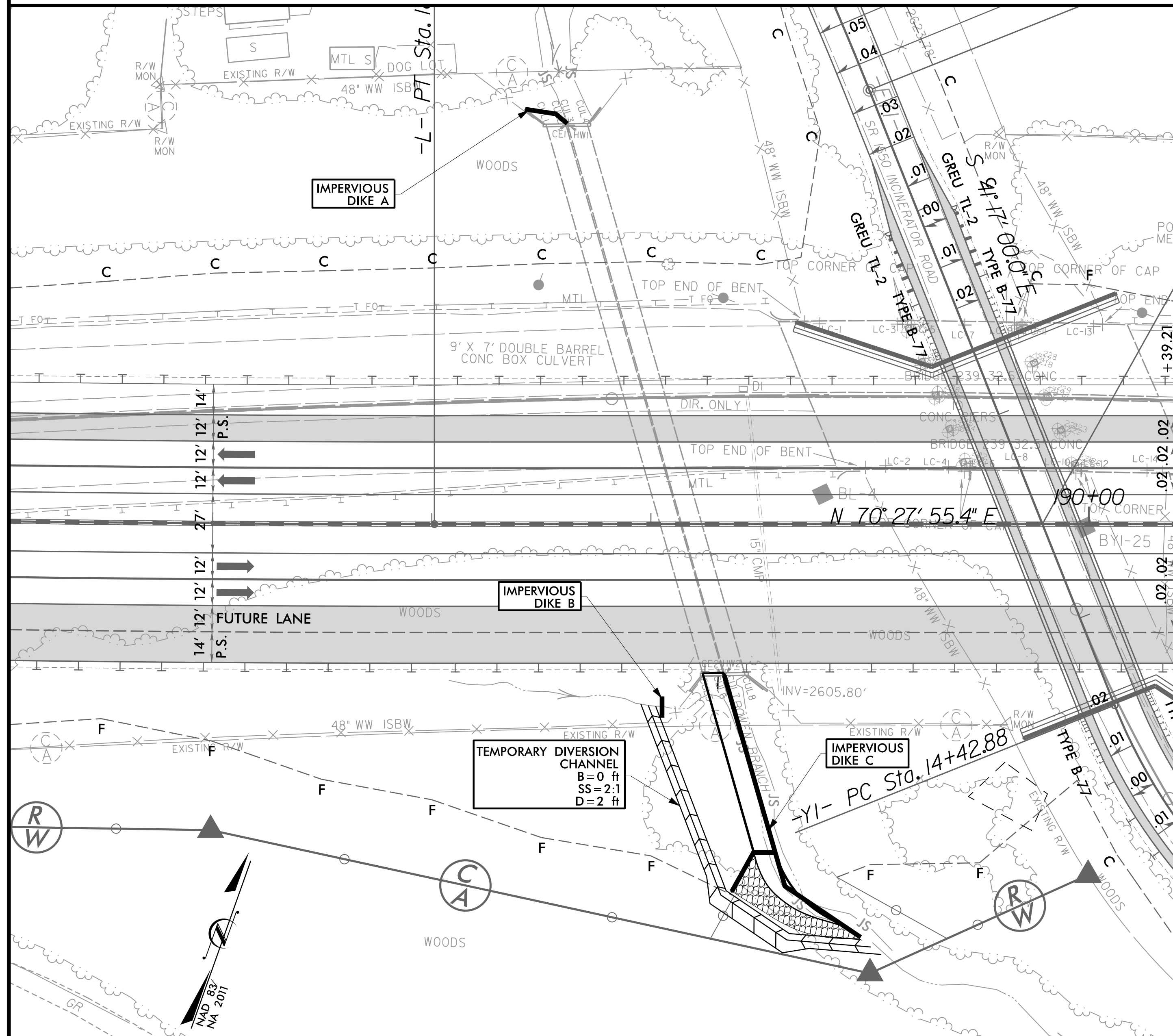


PROJECT REFERENCE NO.	SHEET NO.
HB-0003	EC-5A/CONST.5
R/W SHEET NO.	
ROADWAY DESIGN ENGINEER	HYDRAULICS ENGINEER

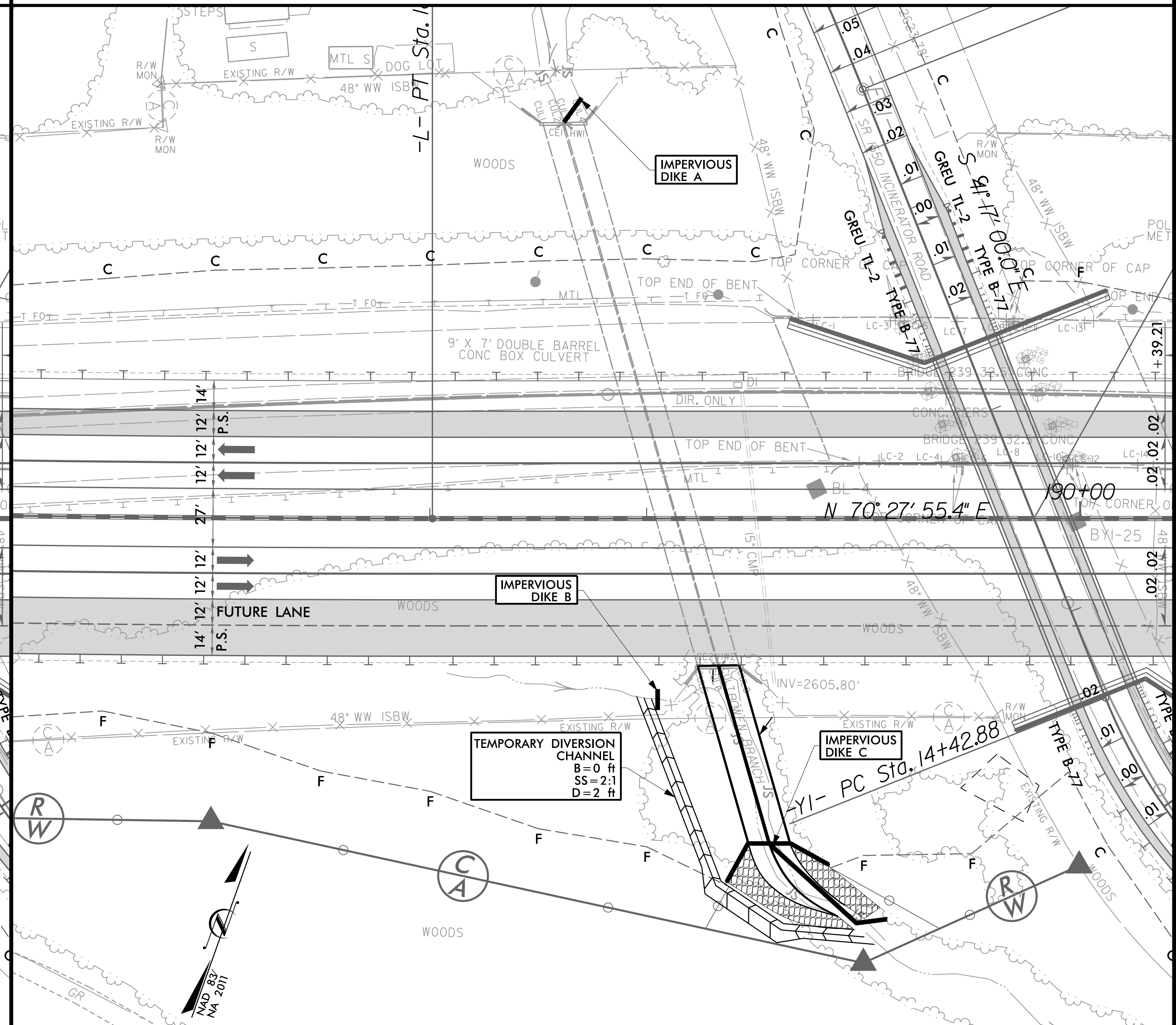
CULVERT CONSTRUCTION SEQUENCE

PHASE I



1. INSTALL SPECIAL STILLING BASIN(S) AS NECESSARY
2. INSTALL IMPERVIOUS DIKES A AND C TO DIVERT FLOW INTO THE EASTERN CULVERT BARREL.
3. INSTALL IMPERVIOUS DIKE B AND TEMPORARY DIVERSION CHANNEL.
4. CONSTRUCT EXTENSION OF WESTERN CULVERT BARREL.
5. COMPLETE CHANNEL IMPROVEMENTS AND RIPRAP ON WESTERN BANK.

PHASE II



1. ADJUST IMPERVIOUS DIKE A AND C TO DIVERT FLOW INTO NEWLY EXTENDED WESTERN CULVERT BARREL.
2. CONSTRUCT EXTENSION OF EASTERN CULVERT BARREL.
3. REMOVE IMPERVIOUS DIKES A AND C.
4. COMPLETE DOWNSTREAM CHANNEL IMPROVEMENTS.
5. REMOVE IMPERVIOUS DIKE B AND TEMPORARY CHANNEL DIVERSION ONCE PERMANENT CHANNEL IS DIVERTED TO PROPOSED 2' BASE DITCH.
6. REMOVE SPECIAL STILLING BASIN(S).
7. COMPLETE ROADWAY.