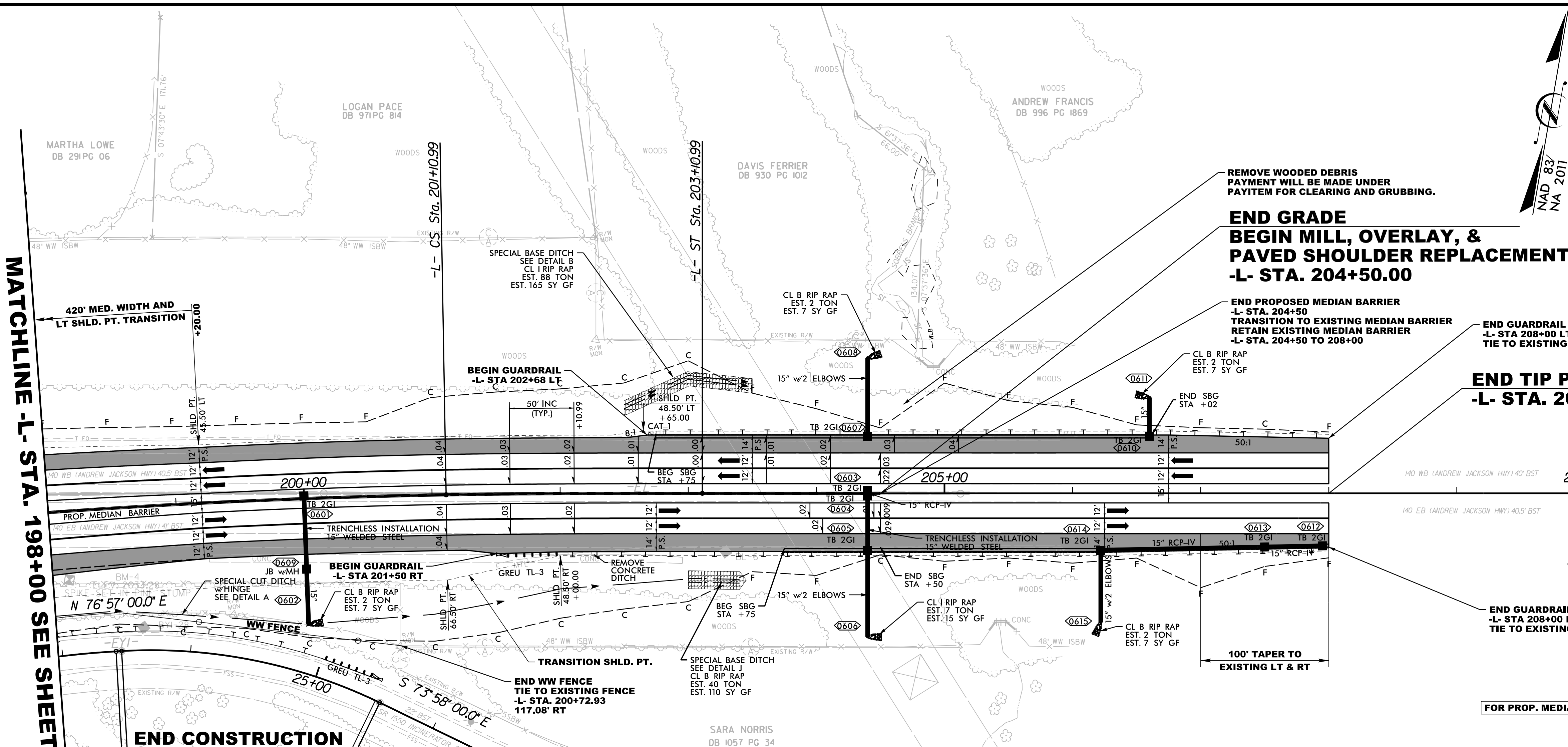


| | |
|--|----------------------------------|
| PROJECT REFERENCE NO. HB-0003 | SHEET NO. 6 |
| RW SHEET NO. | |
| ROADWAY DESIGN ENGINEER 5/14/2024 | HYDRAULICS ENGINEER 5/14/2024 |
| | |
| 1223 JONES FRANKLIN Rd. Raleigh, N.C. 27606 License No. F-0377 Bus: 919 851 8077 Fax: 919 851 8107 | |
| TRANSPORTATION PLANNING/DESIGN - BRIDGE/STRUCTURE DESIGN CIVIL/SITE DESIGN - GIS/GPS - CONSTRUCTION OBSERVATION | |
| DOCUMENT NOT CONSIDERED FINAL UNLESS ALL SIGNATURES COMPLETED | |



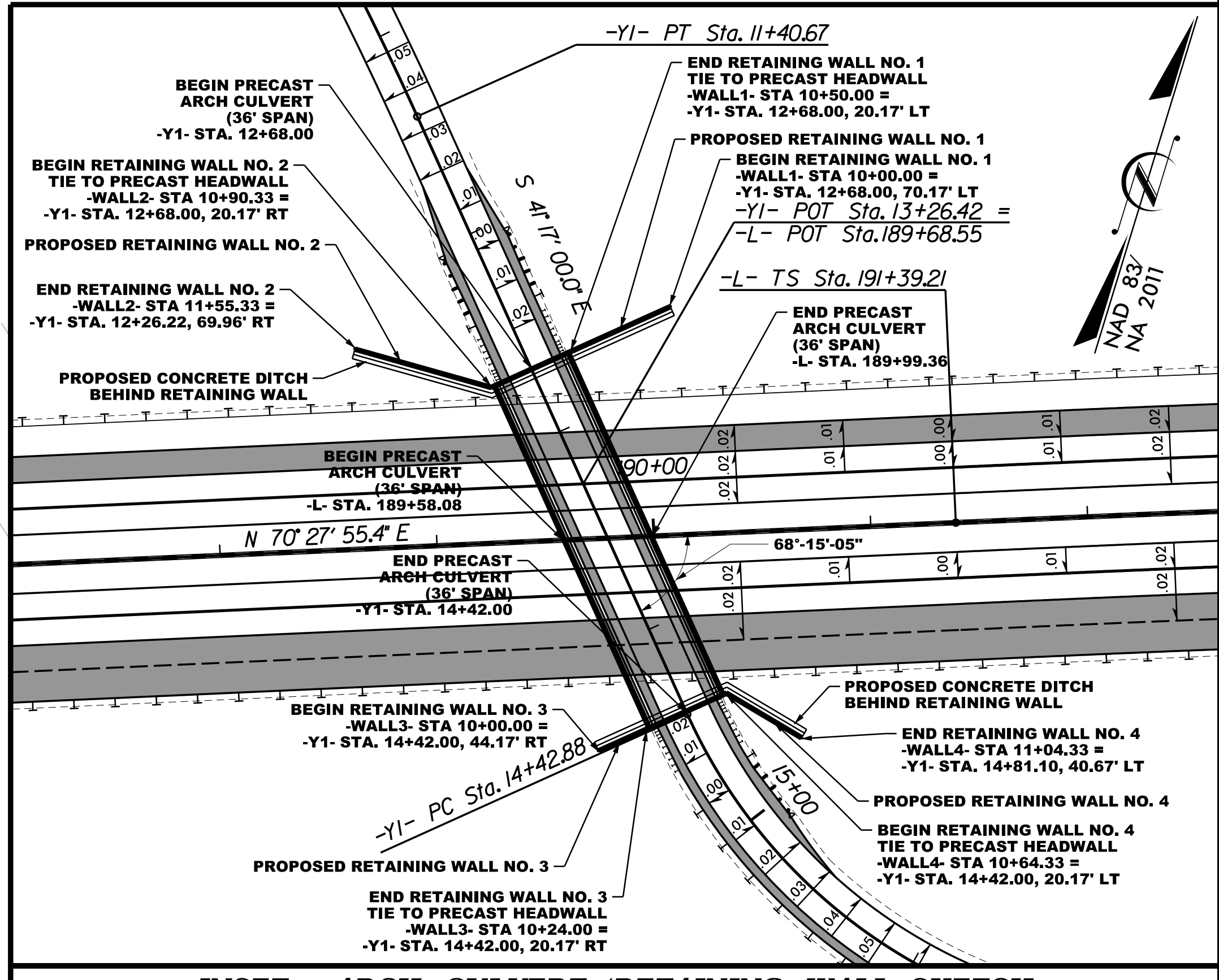
MATCHLINE -L- STA. 198+00 SEE SHEET 5

REVISIONS

END CONSTRUCTION
-Y1- STA. 25+50.00

FOR DRAINAGE DETAILS, SEE SHEET 2D-1
FOR PROP. MEDIAN BARRIER DETAILS, SEE SHEETS 2C-1 THRU 2C-3
FOR -L- PROFILES, SEE SHEET NO. 9

| -L- CURVE DATA | | -Y1- CURVE DATA | | |
|-----------------------------------|--------------------------------|-----------------------------------|------------------------------------|------------------------------------|
| PI Sta 197+25.69 | PIs Sta 201+77.66 | PI Sta 22+14.18 | PI Sta 24+52.28 | PI Sta 27+07.40 |
| $\Delta = 7^{\circ}43'04.2"$ (RT) | $\Theta_s = 1^{\circ}00'00.0"$ | $\Delta = 2^{\circ}58'00.0"$ (RT) | $\Delta = 29^{\circ}05'00.0"$ (RT) | $\Delta = 11^{\circ}59'00.0"$ (LT) |
| D = 1'00'00.0' | Ls = 200.00' | D = 8'30'00.0' | D = 14'00'00.0' | D = 9'00'00.0' |
| L = 771.78' | LT = 133.34' | L = 258.43' | L = 207.74' | L = 133.15' |
| T = 386.48' | ST = 66.67' | T = 130.82' | T = 106.16' | T = 66.82' |
| R = 5,729.58' | | R = 674.07' | R = 409.26' | R = 636.62' |
| SE = .04 | | | | |
| DS = 70 MPH | | | | |



INSET - ARCH CULVERT /RETAINING WALL SKETCH

5/13/2024 HB0003_rdy_psh_06.dgn
11:58:11 AM