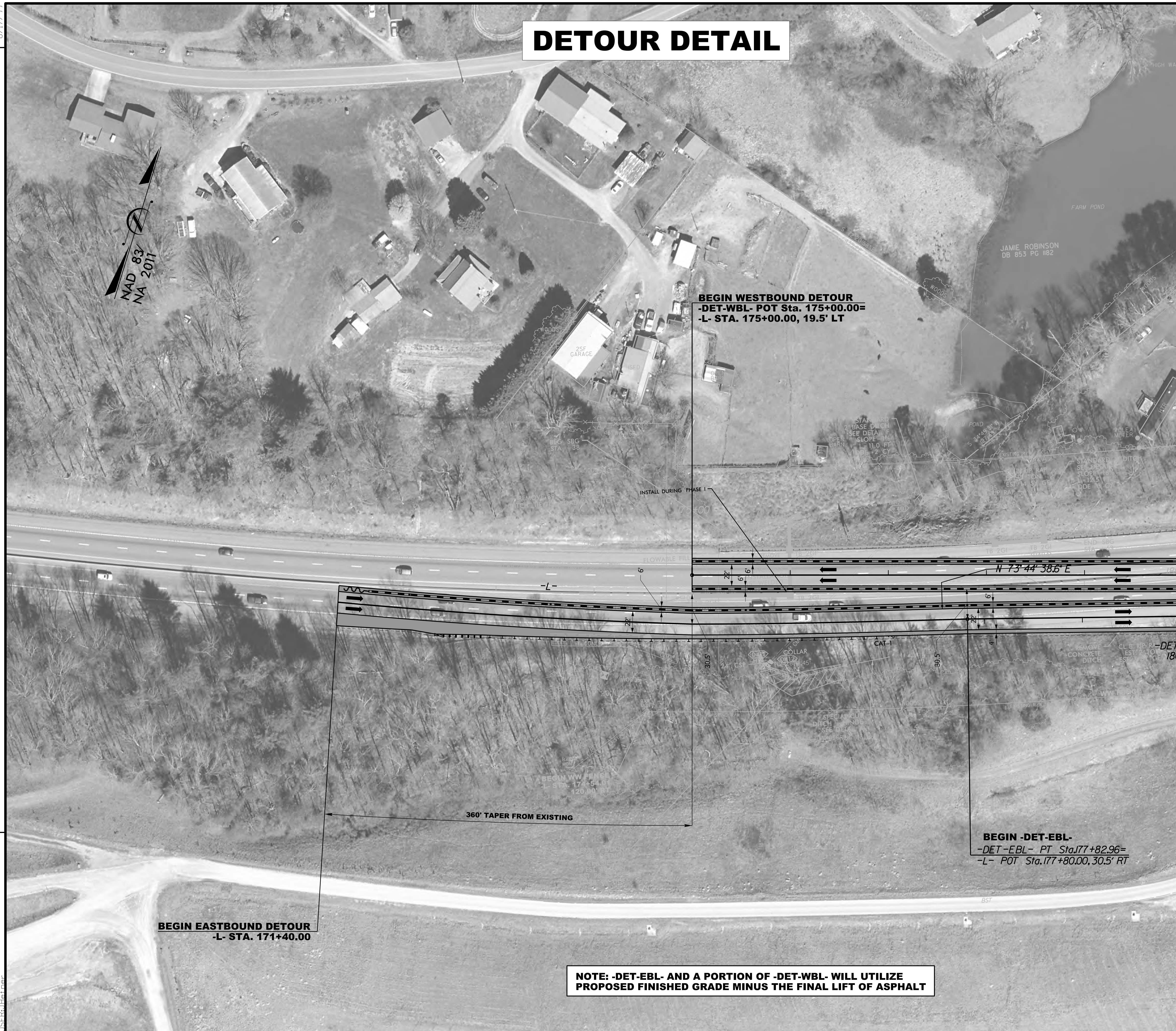


8/17/99

DETOUR DETAIL



REVISIONS



BEGIN WESTBOUND DETOUR
-DET-WBL- POT Sta. 175+00.00=
-L- STA. 175+00.00, 19.5' LT

BEGIN EASTBOUND DETOUR
-L- STA. 174+40.00

BEGIN -DET-EBL-
-DET-EBL- PT Sta.177+82.96=
-L- POT Sta.177+80.00, 30.5' RT

NOTE: -DET-EBL- AND A PORTION OF -DET-WBL- WILL UTILIZE PROPOSED FINISHED GRADE MINUS THE FINAL LIFT OF ASPHALT

MATCHLINE -DET-WBL- STA. 180+00
SEE SHEET 2B-2

| | |
|--|--|
| PROJECT REFERENCE NO. <i>HB-0003</i> | SHEET NO. <i>2B-1</i> |
| RW SHEET NO. | |
| ROADWAY DESIGN ENGINEER 5/14/2024 | HYDRAULICS ENGINEER 5/14/2024 |
| | |
| Designed by: <i>Matthew C. Harvey</i> | DocuSigned by: <i>Matthew L. Harvey</i> |
| 1223 JONES FARM RD. RALEIGH, N.C. 27606 License No. F-0377 Bus: 919 851 8077 Fax: 919 851 8107 | |
| TRANSPORTATION PLANNING/DESIGN - BRIDGE/STRUCTURE DESIGN CIVIL/SITE DESIGN - GIS/GPS - CONSTRUCTION OBSERVATION | |
| DOCUMENT NOT CONSIDERED FINAL UNLESS ALL SIGNATURES COMPLETED | |

5/13/2024
5:\16\003_rdu_psh_02B-01_Detail-1-Detours.dgn
11:56:11 AM