

DETAIL "D"
 4" MULTI-CELL COMPONENTS

NOTES:

THE CONTRACTOR SHALL BE RESPONSIBLE FOR DETERMINING THE TOTAL QUANTITY OF CONDUIT NEEDED TO COMPLETE THE WORK AND THAT THE CONDUIT(S) ARE PLACED AT THE NOTED DIMENSION AND ABOVE THE BOTTOM OF THE GIRDER.

THE INSTALLATION OF THE CONDUIT SYSTEM SHALL BE PAID FOR AS LUMP SUM. THE PRICE SHALL INCLUDE ALL CONDUIT, HANGERS, STABILIZERS, EXPANSION JOINTS, CONCRETE INSERTS, PVC SLEEVES AND ALL NECESSARY HARDWARE TO COMPLETE THE WORK.

THE CONTRACTOR SHALL FIELD VERIFY THAT THE CONDUIT SYSTEM IS NOT IN CONFLICT WITH THE GUARDRAIL POSTS.

SEE DETAIL "C" FOR HANGER ASSEMBLY INSTALLATION.

INSTALL SLEEVES PARALLEL TO GIRDERS. SEE DETAIL "B" FOR SLEEVE INSTALLATION.

PROVIDE TRANSITION ADAPTER AND EXPANSION JOINT FOR CONDUIT AT END BENT 1 AND END BENT 2.

INSTALL ONE STABILIZERS PER SPAN. STABILIZER CAN NOT BE USED INSTEAD OF A HANGER ASSEMBLY.

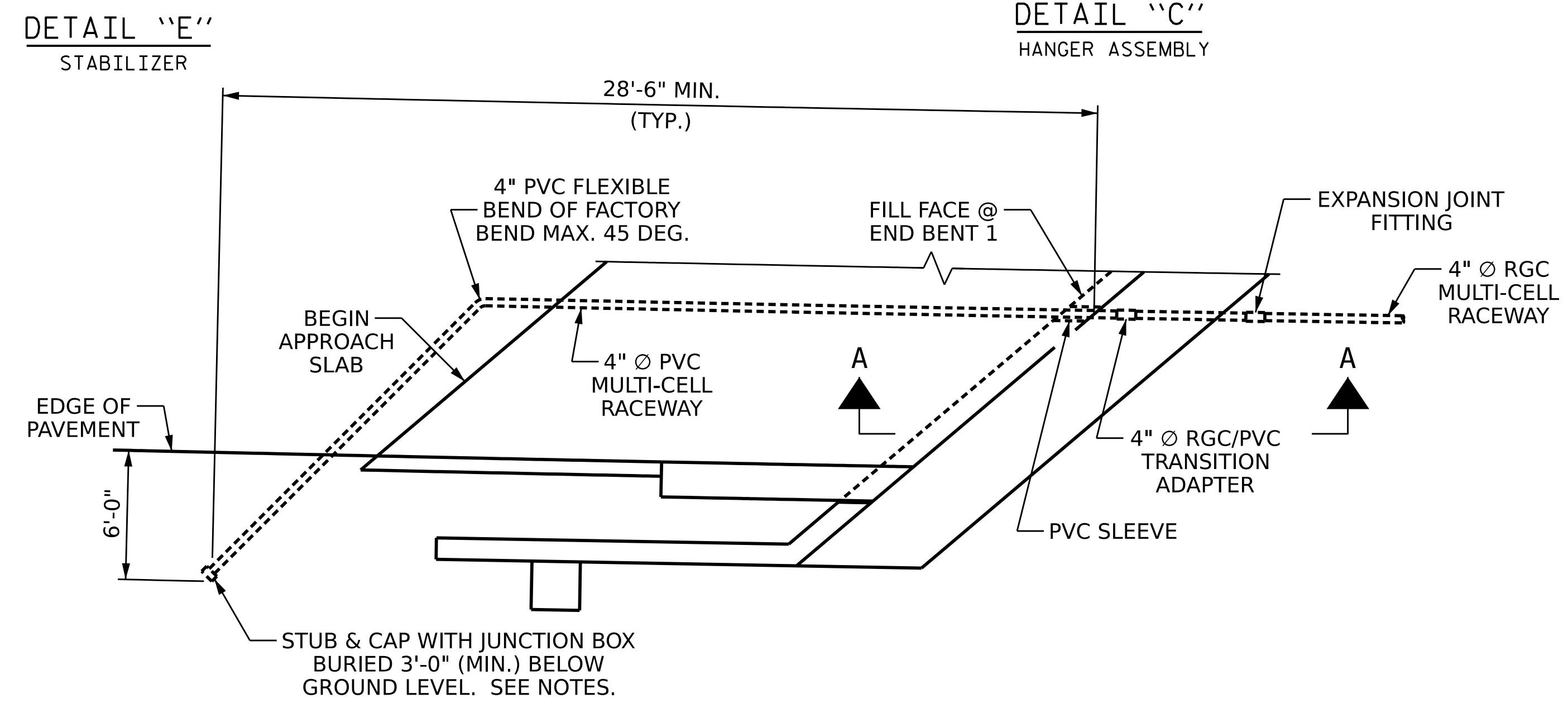
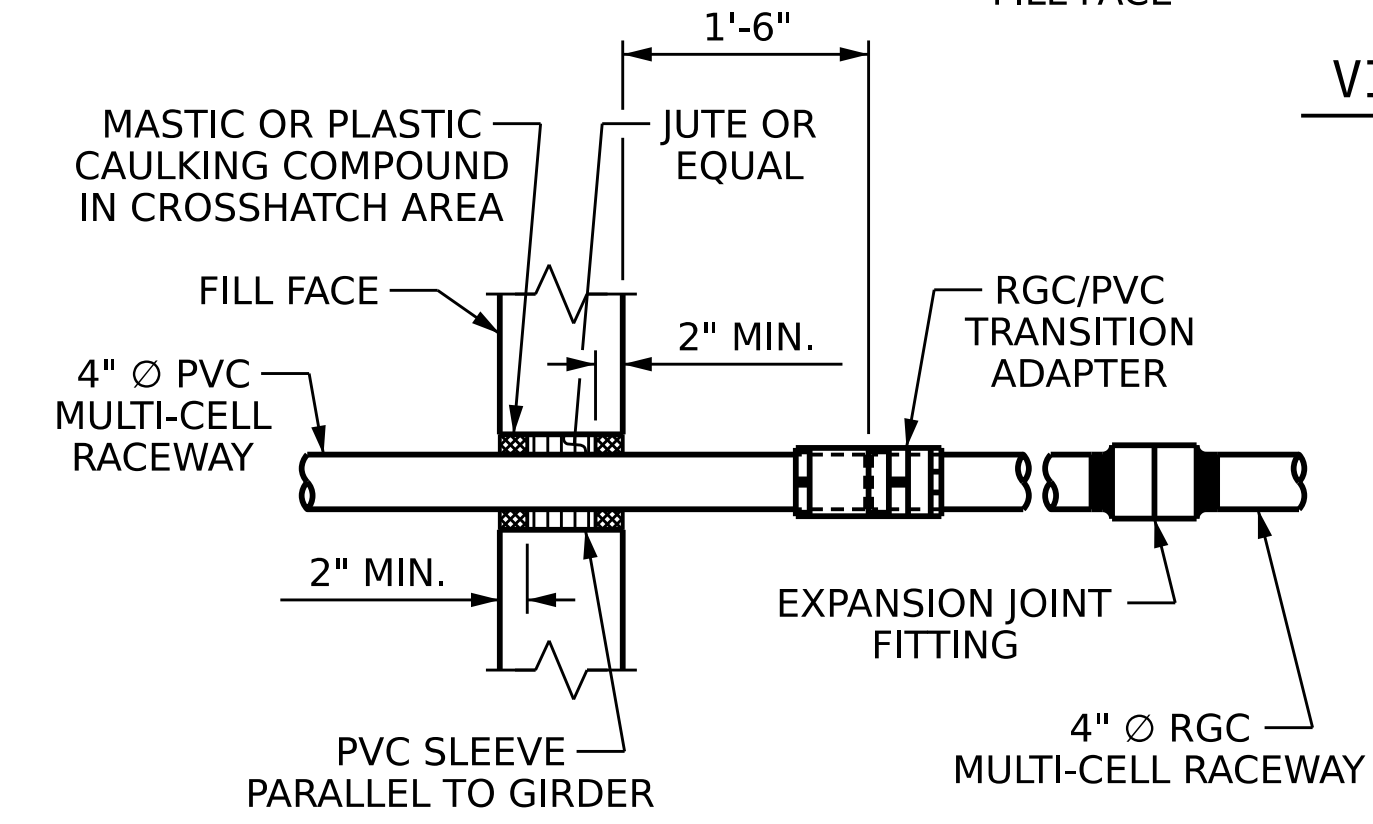
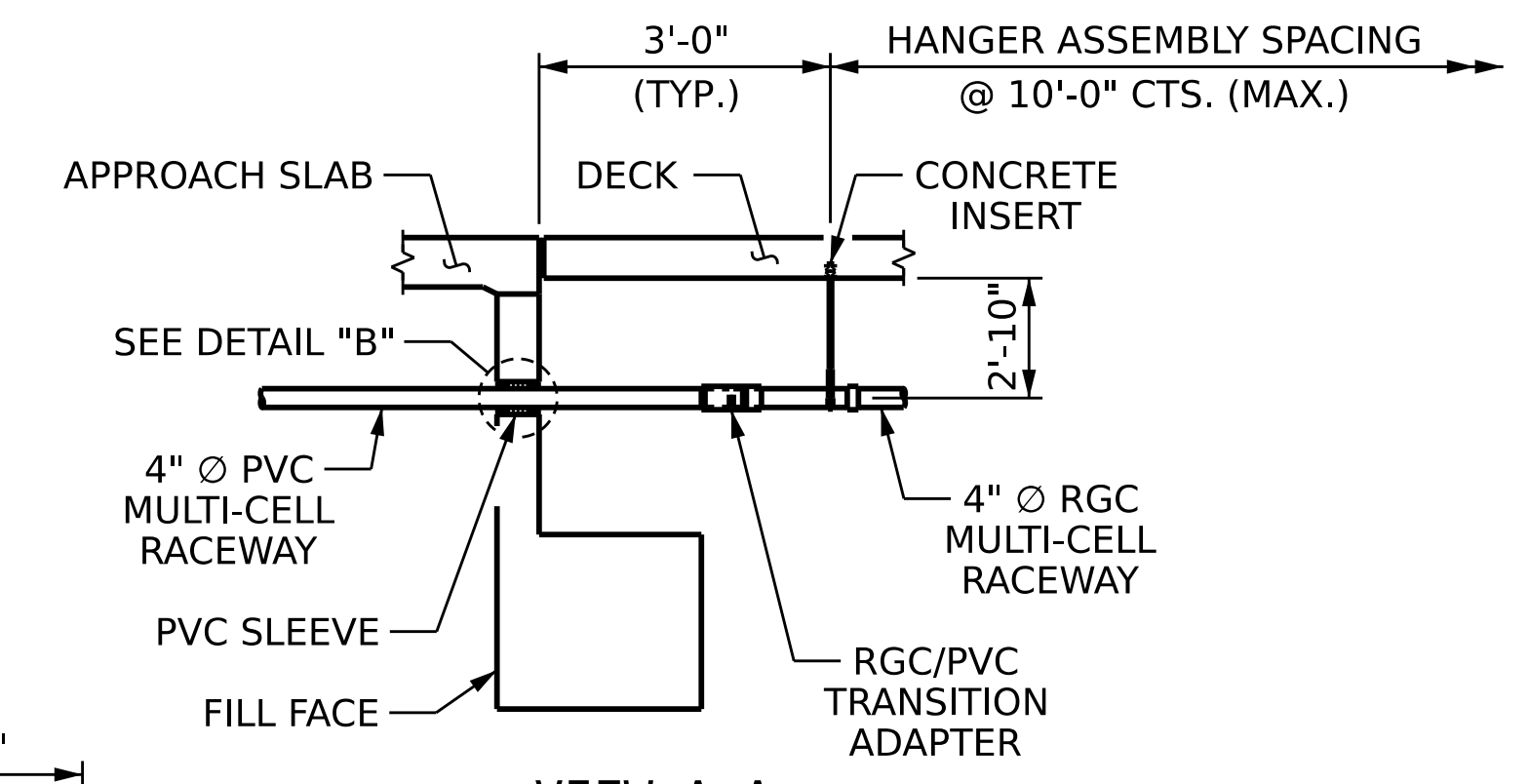
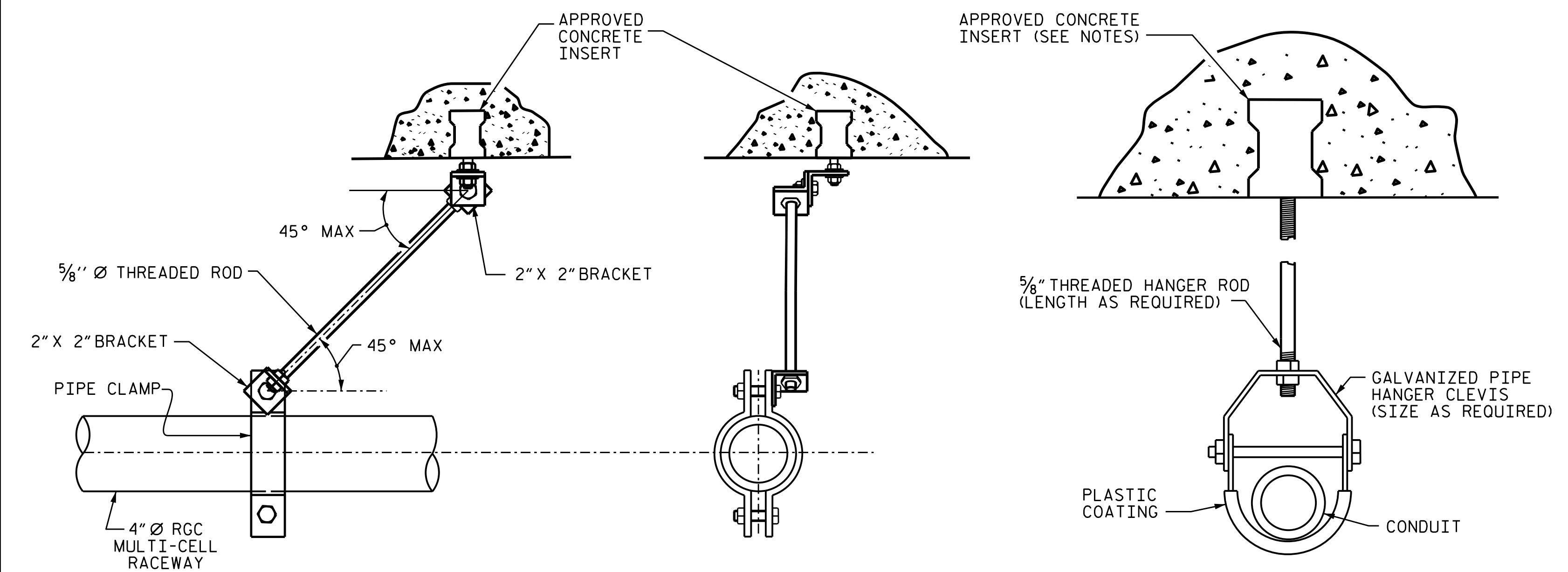
PROVIDE ONE EXPANSION JOINT FITTING PER SPAN.

THE CONCRETE SCREW INSERT SHALL HAVE A ROD SIZE OF 5/8" AND A PULL FORCE OF 1260 lbs.

FOR ELECTRICAL CONDUIT SYSTEM, SEE SPECIAL PROVISIONS.

FOR OVERSIZED JUNCTION BOX, SEE ARTICLE 1098-5 OF THE STANDARD SPECIFICATIONS.

LOCATION OF STABILIZER INSERTS MAY BE ADJUSTED IN THE FIELD TO AVOID CONFLICT WITH LINK SLAB DETAILS.



PROJECT NO. I-2513AA/AB
BUNCOMBE COUNTY
 STATION: 20+16.70 -Y5RPA-
 SHEET 2 OF 2

STATE OF NORTH CAROLINA
 DEPARTMENT OF TRANSPORTATION
 RALEIGH

ELECTRICAL CONDUIT SYSTEM DETAILS

W WGI
 5640 Dillard Drive, Suite 200
 Cary, NC 27518
 LICENSURE NO. C-4434

STATE OF NORTH CAROLINA
 PROFESSIONAL SEAL
 023908
 M.A. AVERETTE
 12/21/2023 | 11:09 AM PST

REVISIONS						SHEET NO.
NO.	BY:	DATE:	NO.	BY:	DATE:	5-45
1			3			TOTAL SHEETS
2			4			49

DOCUMENT NOT CONSIDERED FINAL UNLESS ALL SIGNATURES COMPLETED

12/21/2023 1:50:11 PM c:\pwworking\ocom_ds21_na_2020\d0252774-I-2513AA-SMU_UT2_100902.dgn

DRAWN BY : T. BANKOVICH DATE : 12-23
 CHECKED BY : M.A. AVERETTE DATE : 12-23
 DESIGN ENGINEER OF RECORD: M.A. AVERETTE DATE : 12-23

ELECTRICAL CONDUIT DETAILS