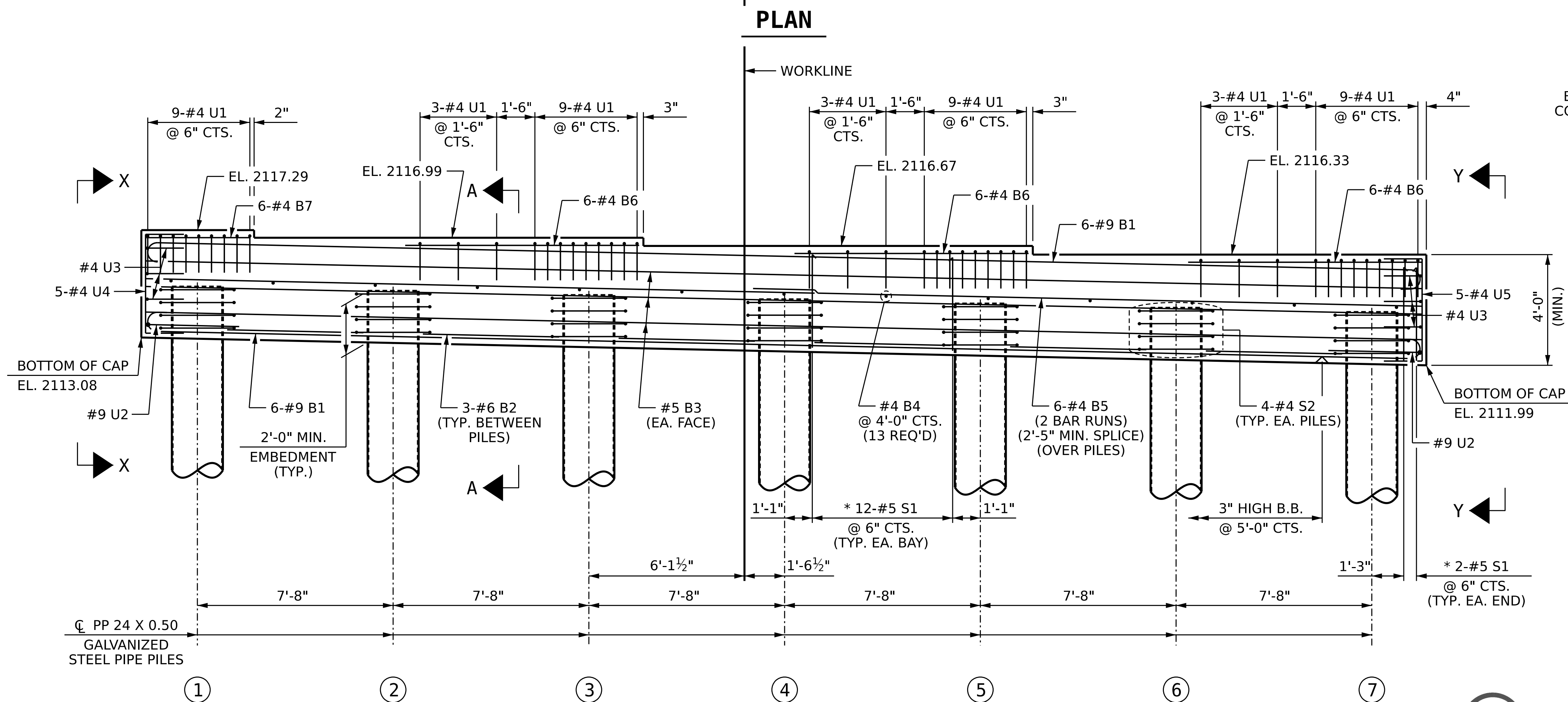
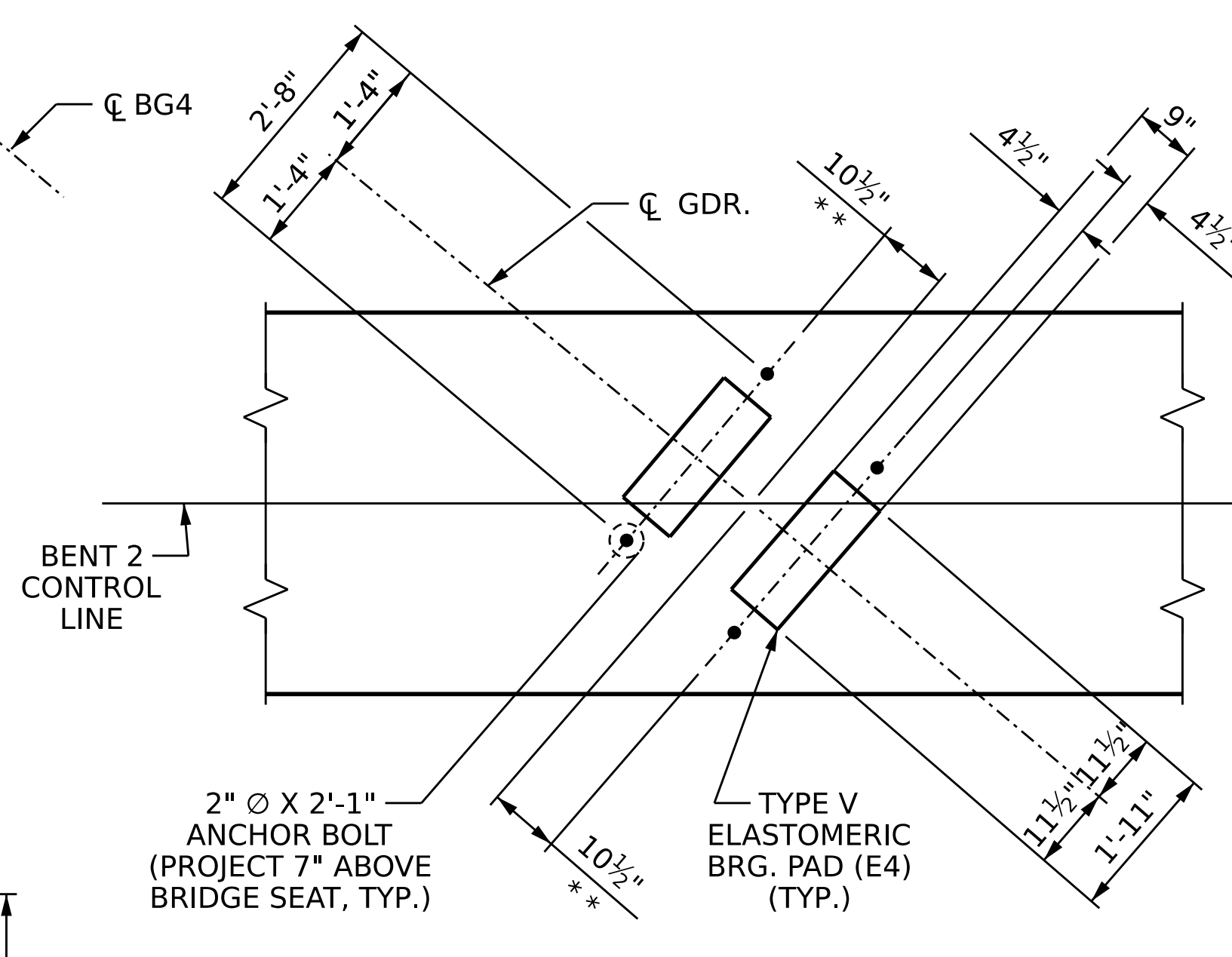


NOTES:

- * INVERT ALTERNATE STIRRUPS.
- STIRRUPS AND "U" BARS IN CAP MAY BE SHIFTED AS NECESSARY TO CLEAR ANCHOR BOLTS.
- FOR ADDITIONAL REINFORCING STEEL IN PP 24 X 0.50 GALVANIZED STEEL PILES, SEE 24" STEEL PIPE PILE SHEET.
- GALVANIZE THE TOP OF EACH INTERIOR BENT PILE A MINIMUM OF 41 FEET. GALVANIZE IN ACCORDANCE WITH SECTION 1076 OF THE STANDARD SPECIFICATIONS.



TOP OF PILE ELEVATIONS	
PILE	ELEVATION
1	2115.07
2	2114.91
3	2114.74
4	2114.58
5	2114.41
6	2114.24
7	2114.08

PROJECT NO. I-2513AA/AB
BUNCOMBE COUNTY
 STATION: 20+16.70 -Y5RPA-

SHEET 1 OF 2

STATE OF NORTH CAROLINA
 DEPARTMENT OF TRANSPORTATION
 RALEIGH
 SUBSTRUCTURE

BENT 2



REVISIONS				SHEET NO.	
NO.	BY:	DATE:	NO.	BY:	DATE:
1			3		
2			4		

TOTAL SHEETS: 49

DRAWN BY: S.D. COOPER DATE: 12-23
 CHECKED BY: M.A. AVERETTE DATE: 12-23
 DESIGN ENGINEER OF RECORD: M.A. AVERETTE DATE: 12-23

LICENSURE NO. C-4434

12/21/2023 11:09 AM EST

**DOCUMENT NOT CONSIDERED FINAL
 UNLESS ALL SIGNATURES COMPLETED**

12/21/2023 11:49:42 PM c:\pwworking\cecom_ds21_na_2020\d0252774\I2513AA_SMU_B3_100902.dgn