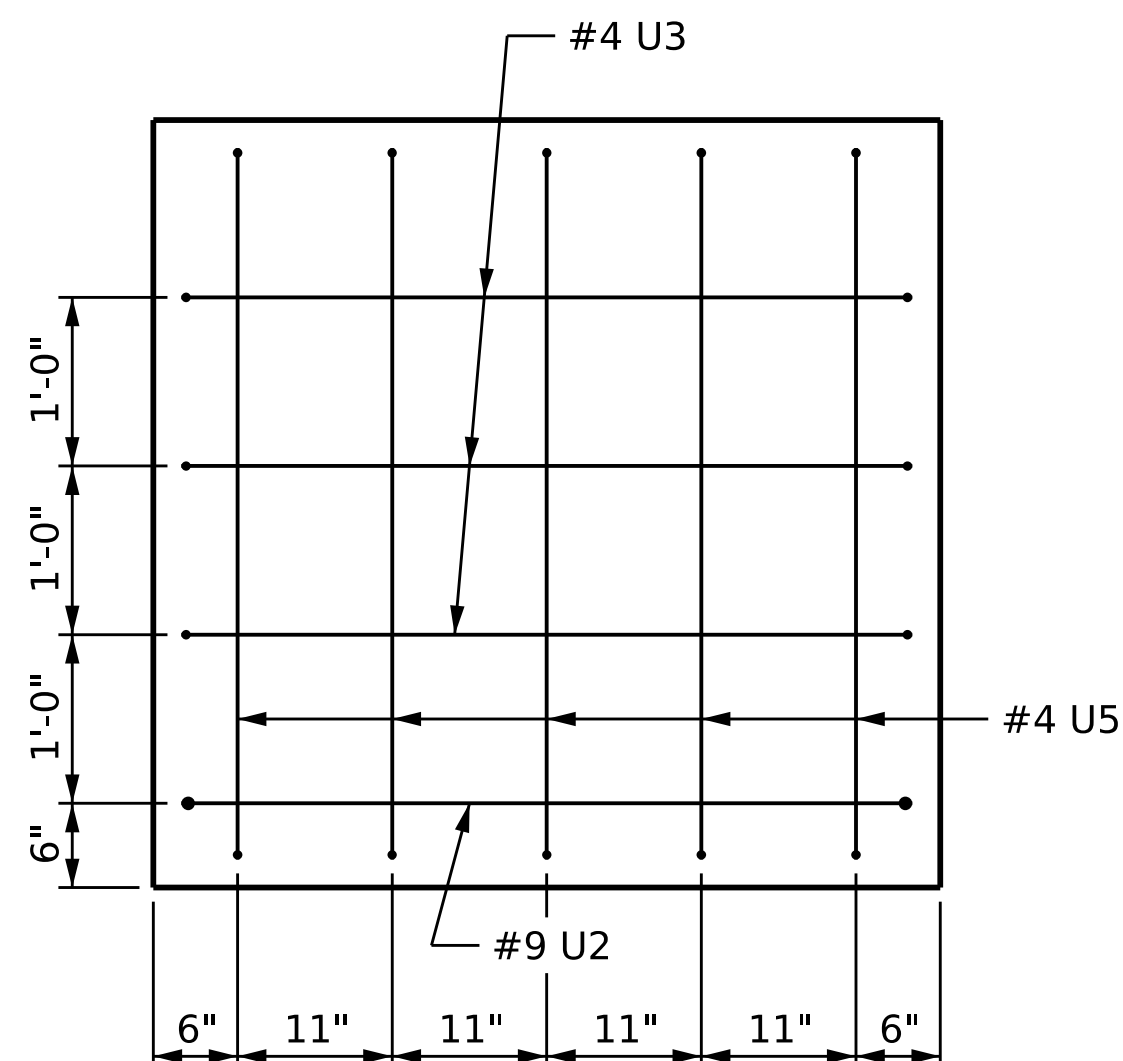
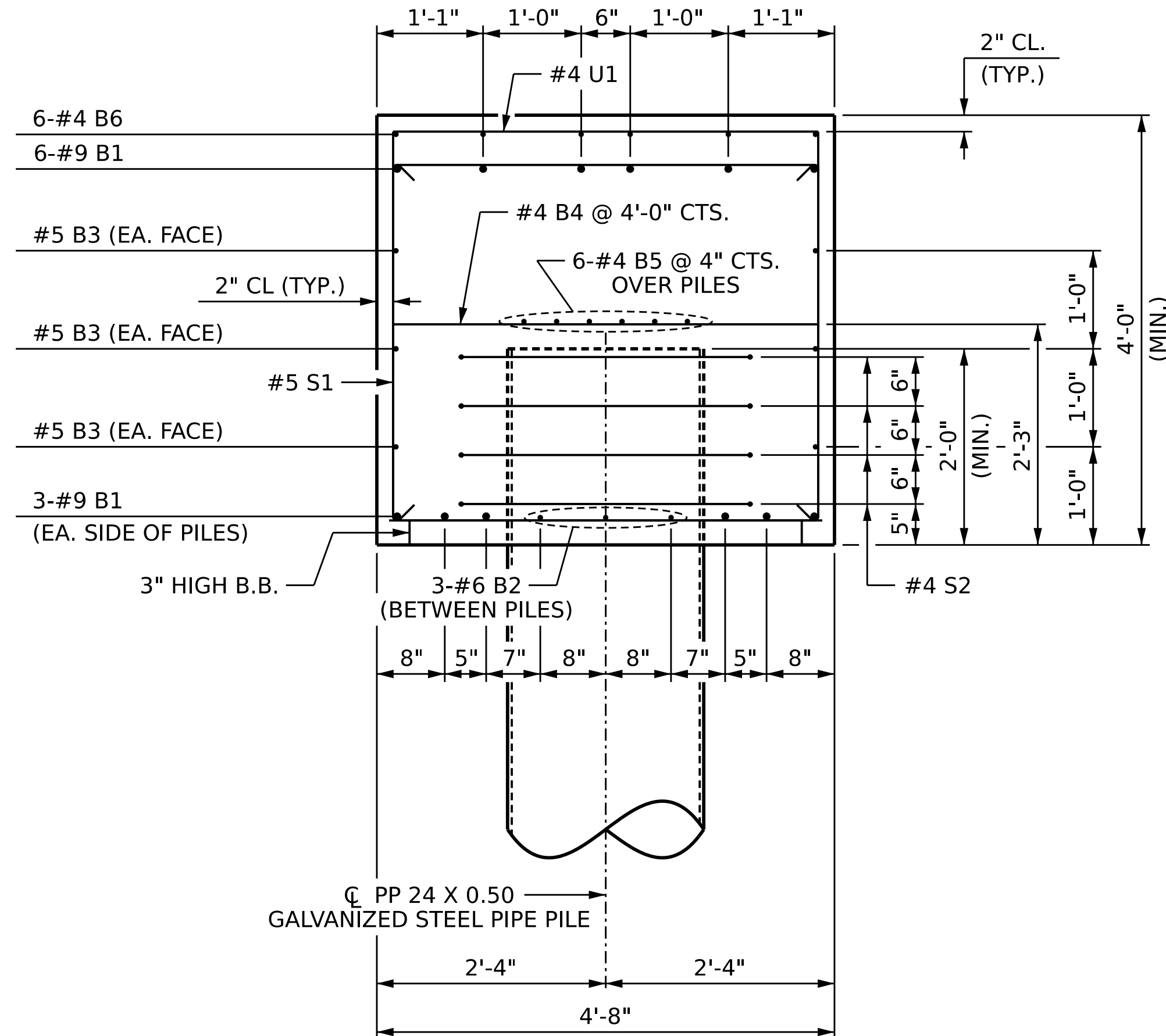


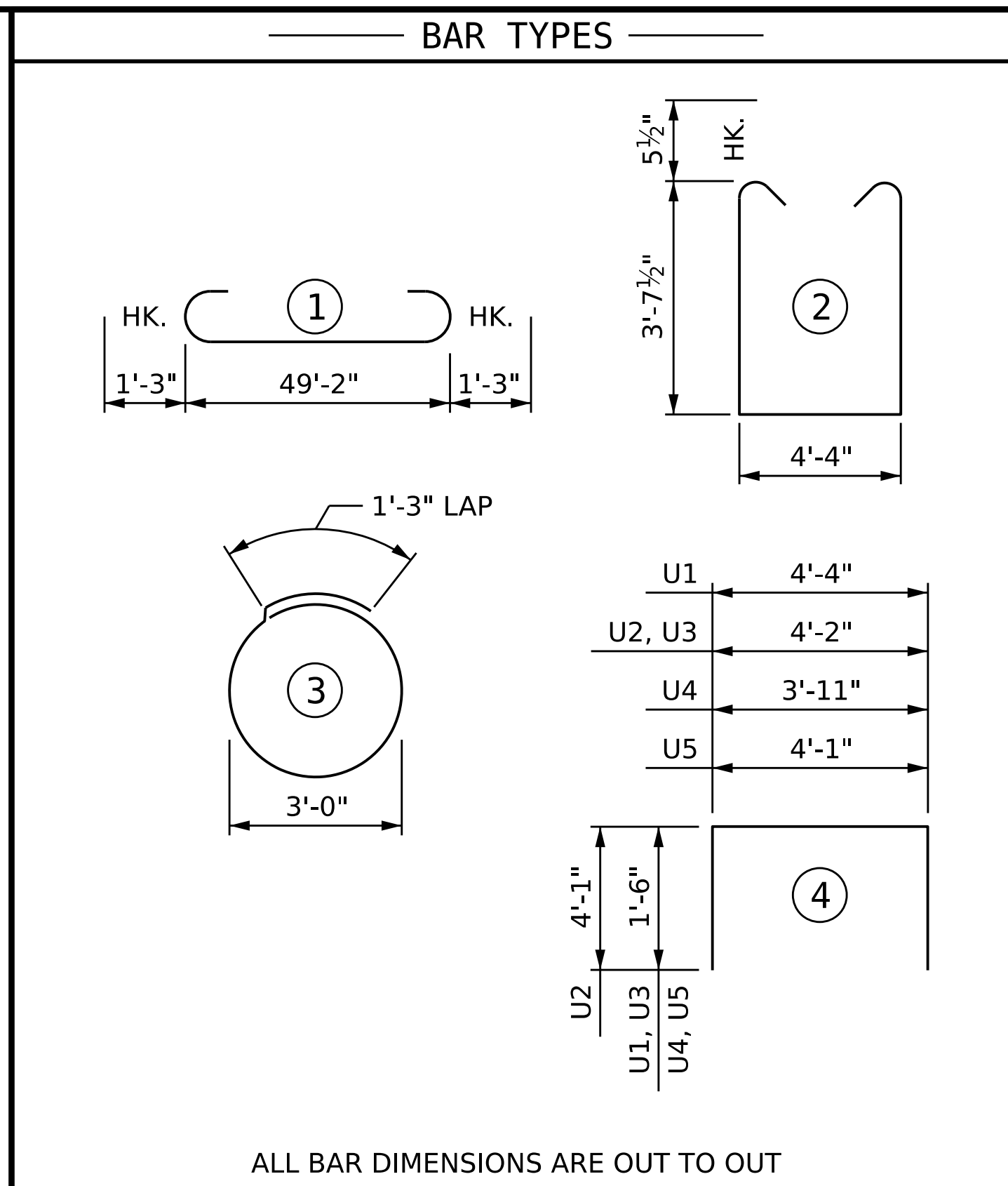
**VIEW X-X**



**VIEW Y-Y**



**SECTION A-A**

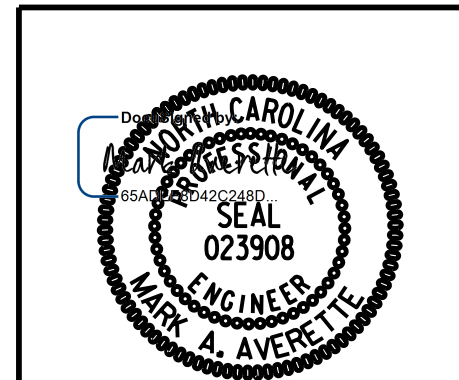


BILL OF MATERIAL					
BENT 1					
BAR	NO.	SIZE	TYPE	LENGTH	WEIGHT
B1	12	#9	1	51'-8"	2108
B2	18	#6	STR	5'-2"	140
B3	6	#5	STR	49'-4"	309
B4	12	#4	STR	4'-4"	35
B5	12	#4	STR	25'-11"	208
B6	18	#4	STR	9'-2"	110
B7	6	#4	STR	4'-1"	16
S1	70	#5	2	12'-6"	913
S2	28	#4	3	10'-9"	201
U1	45	#4	4	7'-4"	220
U2	2	#9	4	12'-4"	84
U3	6	#4	4	7'-2"	29
U4	5	#4	4	6'-11"	23
U5	5	#4	4	7'-1"	24
TOTAL REINFORCING STEEL					4420 LB
TOTAL CLASS A CONCRETE					*** 35.2 CY

\*\*\* CONCRETE DISPLACED BY THE PP 24 X 0.50 GALVANIZED STEEL PILES HAS BEEN DEDUCTED FROM THE CONCRETE QUANTITY.

12/21/2023 1:49:39 PM c:\pwworking\cecom\_ds21\_na\_2020\d0252774\I2513AA\_SMU\_B2\_100902.dgn

DRAWN BY : T. BANKOVICH DATE : 12-23  
 CHECKED BY : M.A. AVERETTE DATE : 12-23  
 DESIGN ENGINEER OF RECORD: M.A. AVERETTE DATE : 12-23



PROJECT NO. I-2513AA/AB  
BUNCOMBE COUNTY  
 STATION: 20+16.70 -Y5RPA-

SHEET 2 OF 2

STATE OF NORTH CAROLINA  
 DEPARTMENT OF TRANSPORTATION  
 RALEIGH  
 SUBSTRUCTURE

**BENT 1**

REVISIONS						SHEET NO.
NO.	BY:	DATE:	NO.	BY:	DATE:	5-38
1			3			TOTAL SHEETS
2			4			49

**DOCUMENT NOT CONSIDERED FINAL  
 UNLESS ALL SIGNATURES COMPLETED**