

PLAN

NOTES:

STIRRUPS AND "U" BARS IN CAP MAY BE SHIFTED AS NECESSARY TO CLEAR ANCHOR BOLTS.

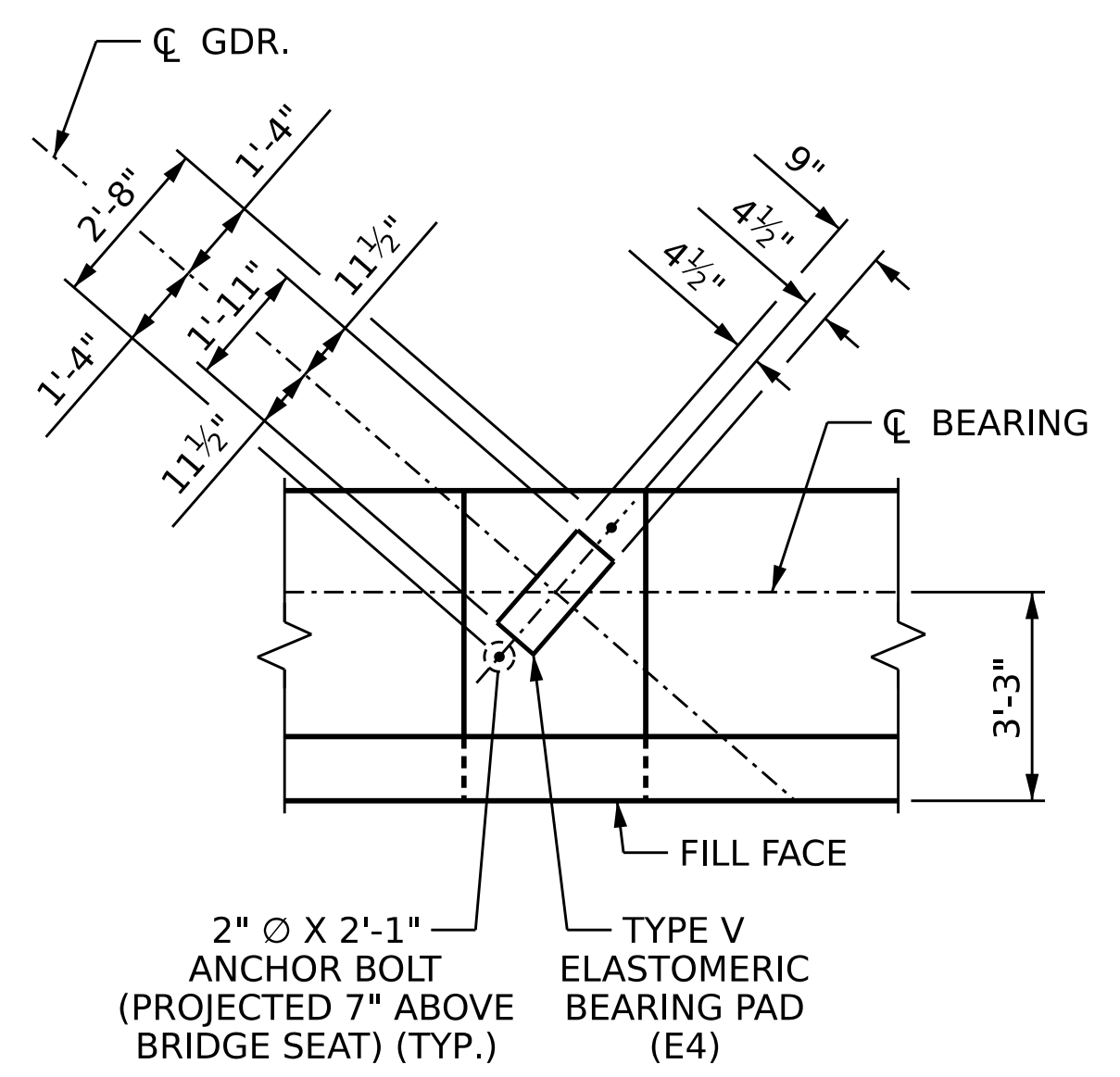
BACKWALL SHALL BE PLACED BEFORE APPLYING THE EPOXY PROTECTIVE COATING.

THE TOP SURFACE AREAS OF THE END BENT CAPS SHALL BE CURED IN ACCORDANCE WITH THE STANDARD SPECIFICATIONS EXCEPT THE MEMBRANE CURING COMPOUND METHOD SHALL NOT BE USED.

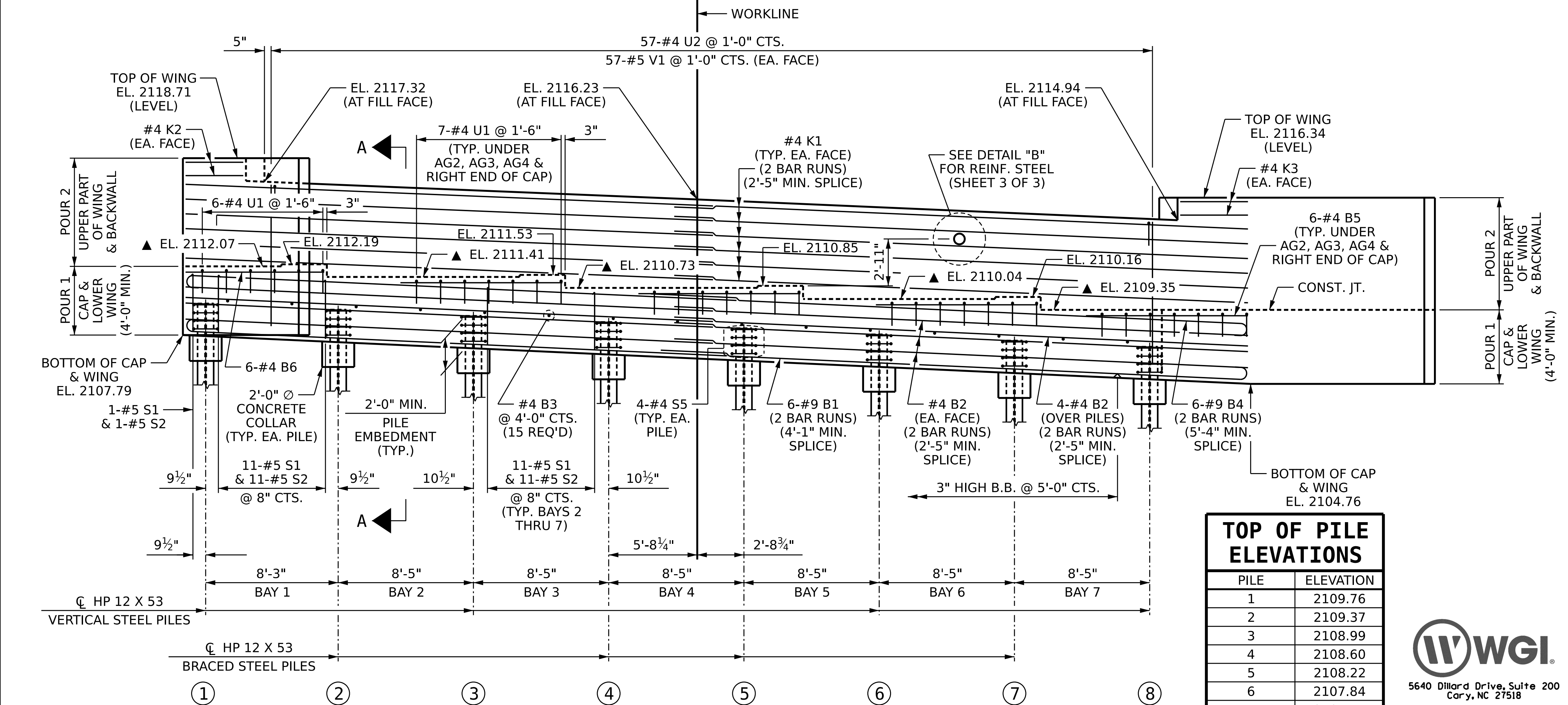
THE TOP SURFACE OF THE CAP EXCEPT THE BRIDGE SEAT BUILDUPS SHALL BE SLOPED TRANSVERSELY FROM THE FILL FACE TO THE BACK FACE AT THE RATE 2%.

▲ FOR LOCATION OF ELEVATIONS BETWEEN BRIDGE SEAT BUILDUPS, SEE SECTION A-A SHEET 3 OF 3.

SEE GENERAL DRAWING "FOUNDATION LAYOUT" FOR ADDITIONAL NOTES FOR DRIVING PILES.



DETAIL "A"
(TYP. EA. GIRDER)



ELEVATION

(WING PILE NOT SHOWN FOR CLARITY)

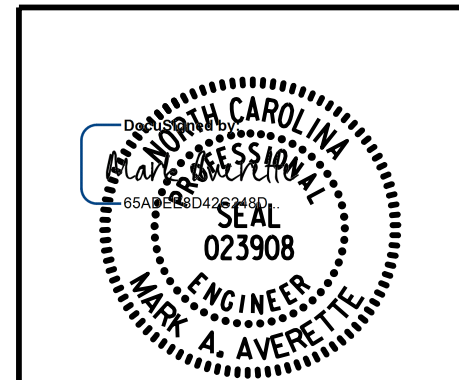
TOP OF PILE ELEVATIONS	
PILE	ELEVATION
1	2109.76
2	2109.37
3	2108.99
4	2108.60
5	2108.22
6	2107.84
7	2107.45
8	2107.07
WING PILE	2106.76

PROJECT NO. I-2513AA/AB
BUNCOMBE COUNTY
 STATION: 20+16.70 -Y5RPA-

SHEET 1 OF 3

STATE OF NORTH CAROLINA
 DEPARTMENT OF TRANSPORTATION
 RALEIGH
 SUBSTRUCTURE

END BENT 1



DRAWN BY : T. BANKOVICH DATE : 12-23
 CHECKED BY : M.A. AVERETTE DATE : 12-23
 DESIGN ENGINEER OF RECORD: M.A. AVERETTE DATE : 12-23

REVISIONS						SHEET NO.
NO.	BY:	DATE:	NO.	BY:	DATE:	5-34
1			3			TOTAL SHEETS
2			4			49

DOCUMENT NOT CONSIDERED FINAL
 UNLESS ALL SIGNATURES COMPLETED

12/21/2023 1:49:31 PM c:\pwworking\cecom_ds21_na_2020\d0252774_I2513AA_SMU_EBL_100902.dgn