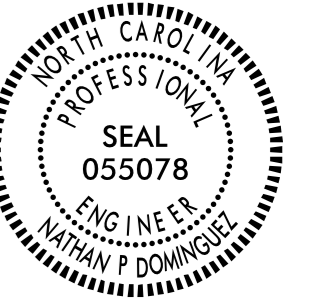
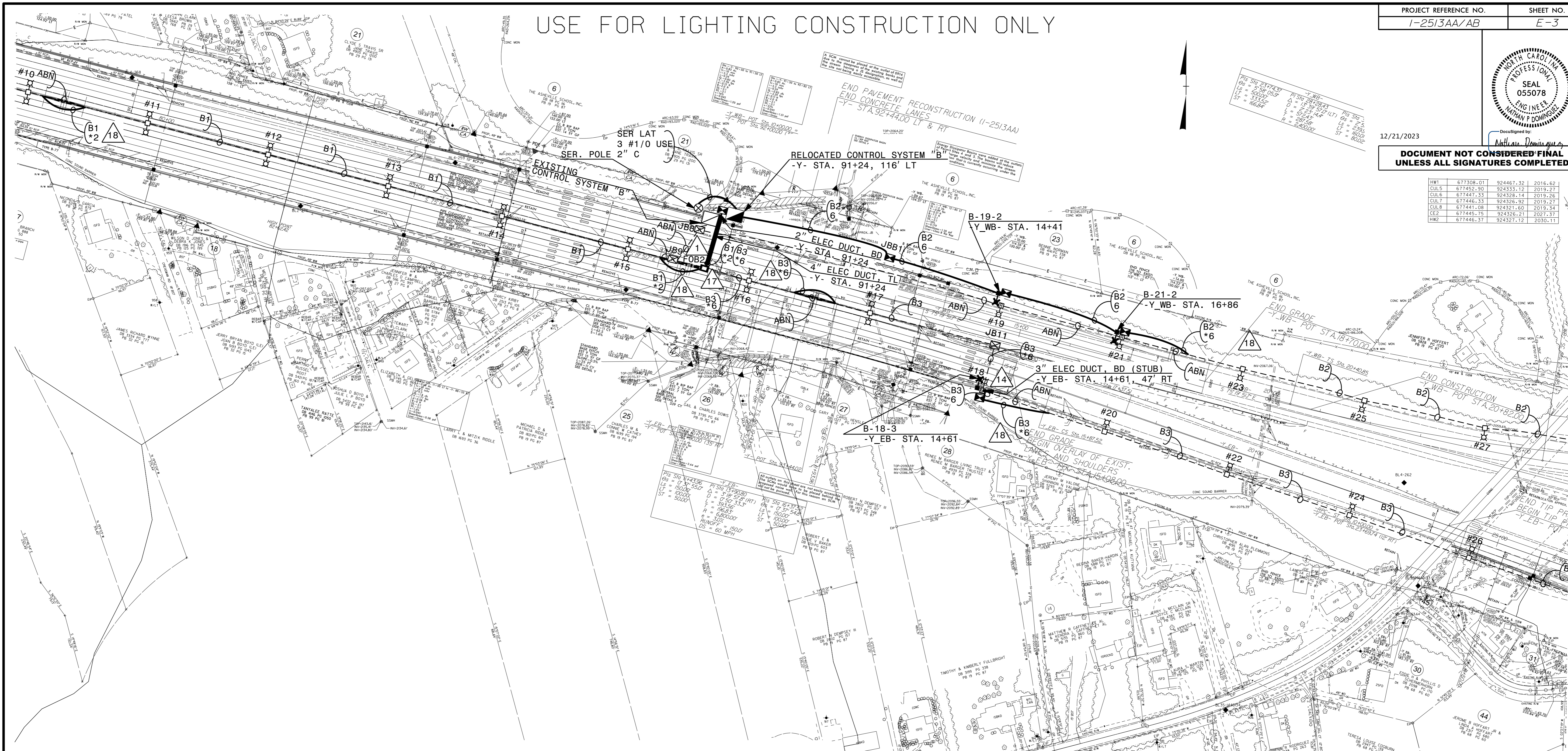


USE FOR LIGHTING CONSTRUCTION ONLY



12/21/2023
 DOCUMENT NOT CONSIDERED FINAL UNLESS ALL SIGNATURES COMPLETED

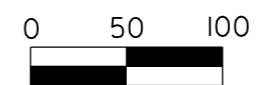
HW1	677308.01	924467.32	2016.62
CUL5	677452.90	924333.12	2019.27
CUL6	677447.33	924328.14	2019.26
CUL7	677446.33	924326.92	2019.27
CUL8	677441.08	924321.60	2019.34
CE2	677445.75	924326.21	2027.37
HW2	677446.37	924327.12	2030.11



LOAD SCHEDULE AT I-40 N.B., EAST OF MONTGOMERY ST DEAD-END

EXISTING						PROPOSED					
CONTROL SYSTEM "B"						CONTROL SYSTEM "B"					
1Ø, 3W, 240/480 VAC						1Ø, 3W, 240/480 VAC					
CIRCUIT ID	45' SINGLE ARM 1 @ 120W LED LUMINAIRES	45' TWIN ARMS 2 @ 120W LED LUMINAIRES	AMPS @ 480V	KW LOAD	BREAKER SIZE (AMPS)	45' SINGLE ARM 1 @ 120W LED LUMINAIRES	45' TWIN ARMS 2 @ 120W LED LUMINAIRES	45' SINGLE ARM 1 @ 150W MAX. LED LUMINAIRES	AMPS @ 480V	KW LOAD	
B1		1-15	7.5	3.6	25		1-15		7.5	3.6	
B2	19, 21, 23, 25, 27, 29, 31, 33, 34, 35		2.5	1.2	15	23, 25, 27, 29, 31, 33, 34, 35		B-19, B-21	2.6	1.3	
B3	18, 20, 22, 24, 26, 28, 30, 32	16, 17	3.0	1.4	15	20, 22, 24, 26, 28, 30, 32	16, 17	B-18	3.1	1.5	
SPARE					25						
TOTAL	18 ON 18 POLES	34 ON 17 POLES	13.0	6.2		15 ON 15 POLES	34 ON 17 POLES	3 ON 3 POLES	13.2	6.4	

EXISTING LIGHTING INSTALLED AS HPS UNDER I-4401 (LET DATE 4/19/05). UPGRADED TO LED BY A BRADY/TRANE GUARANTEED ENERGY SAVINGS CONTRACT IN 2018/2019. NO CHANGES REQUIRED TO EXISTING BREAKERS.



SEE SHEET "E-1" FOR LEGEND & Δ NOTES

2			
1			
Rev.	Date	Description	Approved
NORTH CAROLINA DEPARTMENT OF TRANSPORTATION ROADWAY DESIGN LIGHTING/ELECTRICAL SECTION LIGHTING LAYOUT I-40/I-26 INTERCHANGE WEST OF SAND HILL RD			
BUNCOMBE COUNTY			
Drawn By:	MSQ	Approved By:	RGH
Dwg No.:			

I5-NOV-2023 14:10 R:\Lighting\Lighting Design\I2513.IE_PSH_E3.dgn msquad1 At RD-329439