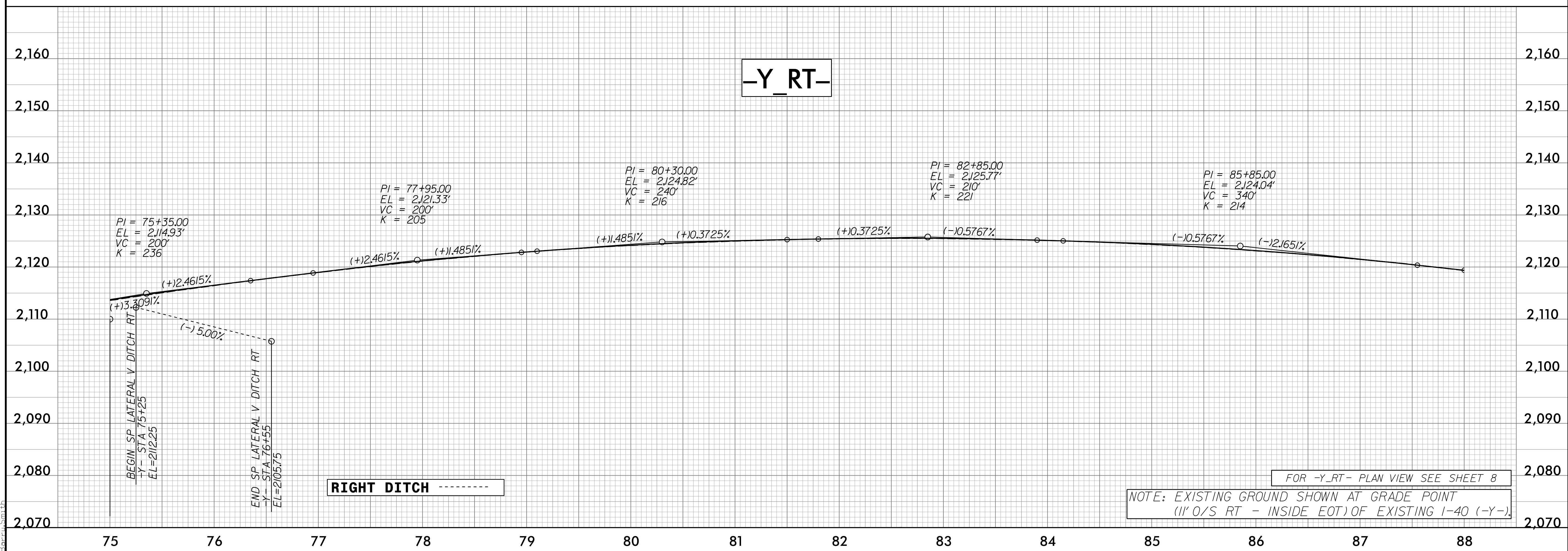
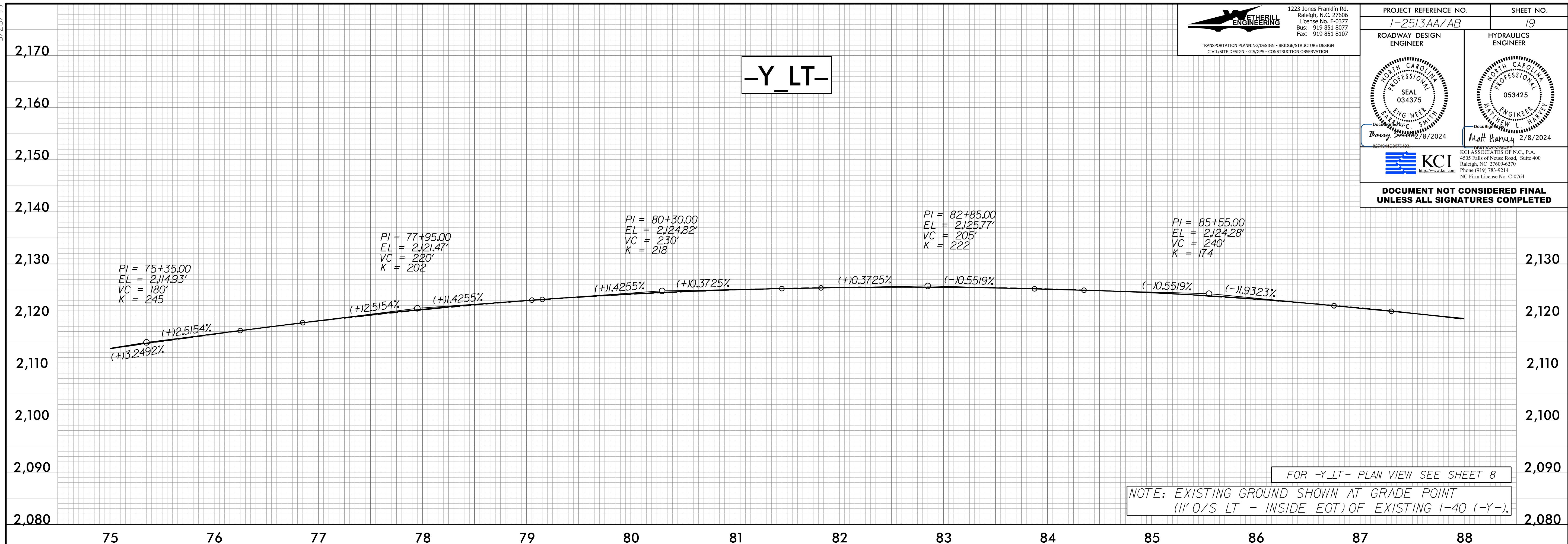


5/28/24

ETHERILL ENGINEERING
 1223 Jones Franklin Rd.
 Raleigh, N.C. 27606
 License No. F-0377
 Bus: 919 851 8077
 Fax: 919 851 8107

TRANSPORTATION PLANNING/DESIGN • BRIDGE/STRUCTURE DESIGN
 CIVIL/SITE DESIGN • GIS/GPS • CONSTRUCTION OBSERVATION

PROJECT REFERENCE NO. I-25/3AA/AB	SHEET NO. 19
ROADWAY DESIGN ENGINEER BARRY SWANN 2/8/2024	HYDRAULICS ENGINEER MATT HARVEY 2/8/2024
 KCI ASSOCIATES OF N.C., P.A. 4505 Falls of Neuse Road, Suite 400 Raleigh, NC 27609-6370 Phone (919) 783-9214 NC Firm License No. C-0764	
DOCUMENT NOT CONSIDERED FINAL UNLESS ALL SIGNATURES COMPLETED	



P:\5/2023\12512626.dwg-pfl_19.dgn