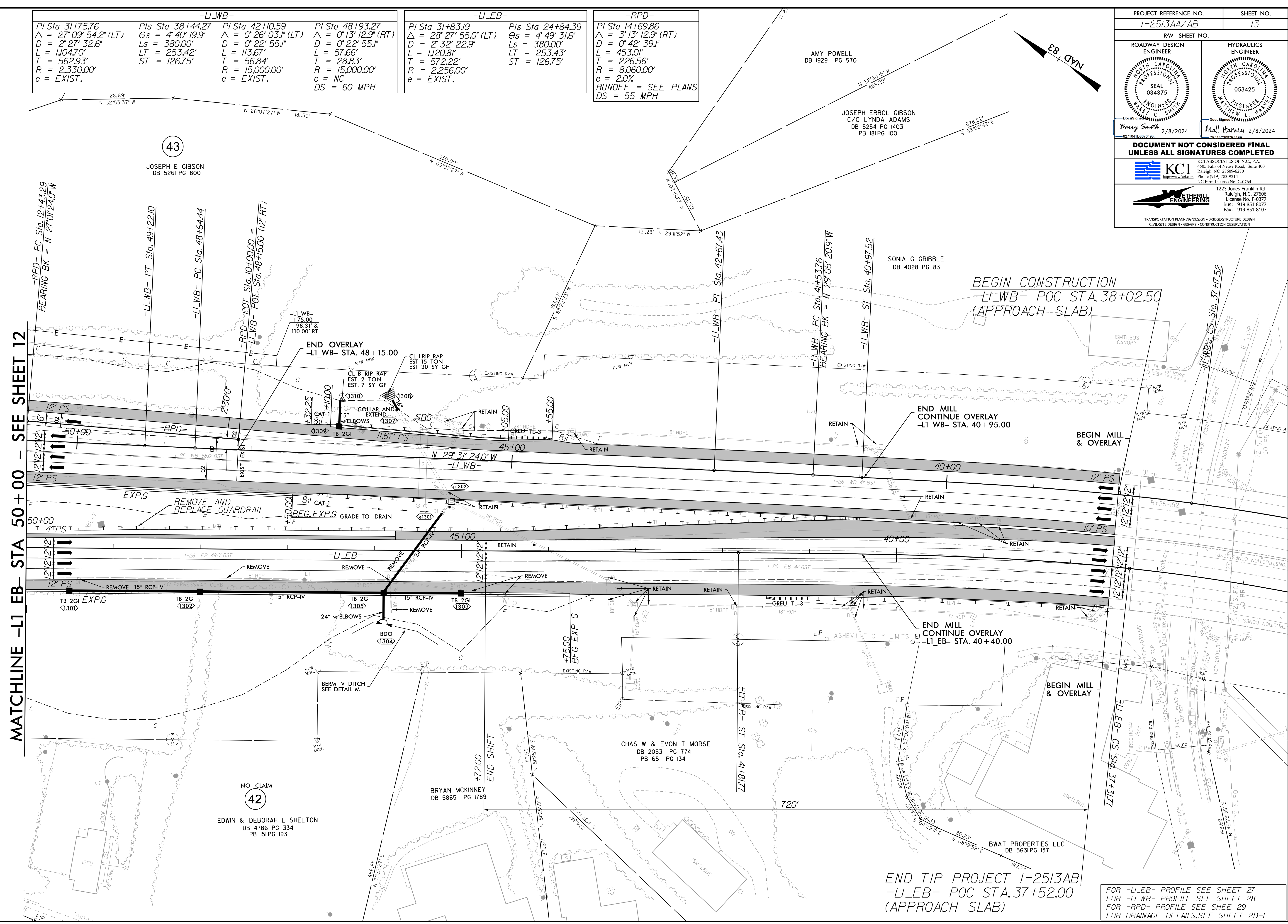


5/14/2023

-LI_WB-				-LI_EB-		-RPD-	
PI Sta 31+75.76	PIs Sta 38+44.27	PI Sta 42+10.59	PI Sta 48+93.27	PI Sta 31+83.19	PIs Sta 24+84.39	PI Sta 14+69.86	
$\Delta = 27^{\circ}09'54.2"$ (LT)	$\Delta = 4^{\circ}40'19.9"$	$\Delta = 0^{\circ}26'03.1"$ (LT)	$\Delta = 0^{\circ}13'12.9"$ (RT)	$\Delta = 28^{\circ}27'55.0"$ (LT)	$\Delta = 4^{\circ}49'31.6"$	$\Delta = 3^{\circ}13'12.9"$ (RT)	
$D = 2^{\circ}27'32.6"$	$Ls = 380.00'$	$D = 0^{\circ}22'55.1"$	$D = 0^{\circ}22'55.1"$	$D = 2^{\circ}32'22.9"$	$Ls = 380.00'$	$D = 0^{\circ}42'39.1"$	
$L = 11047.0'$	$LT = 253.42'$	$L = 113.67'$	$L = 57.66'$	$L = 1120.81'$	$T = 253.43'$	$L = 453.01'$	
$T = 562.93'$	$ST = 126.75'$	$T = 56.84'$	$T = 28.83'$	$T = 572.22'$	$R = 15,000.00'$	$T = 226.56'$	
$R = 2,330.00'$		$R = 15,000.00'$	$R = 15,000.00'$	$R = 2,256.00'$	$e = EXIST.$	$R = 8,060.00'$	
$e = EXIST.$		$e = EXIST.$	$e = NC$	$e = EXIST.$		$e = 2.0\%$	
			$DS = 60$ MPH			$RUNOFF = SEE PLANS$	
						$DS = 55$ MPH	

PROJECT REFERENCE NO. I-2513AA/AB	SHEET NO. 13
ROADWAY DESIGN ENGINEER BARRY C SMITH NORTH CAROLINA PROFESSIONAL ENGINEER SEAL 034375 2/8/2024	HYDRAULICS ENGINEER MATT HARVEY NORTH CAROLINA PROFESSIONAL ENGINEER SEAL 053425 2/8/2024
DOCUMENT NOT CONSIDERED FINAL UNLESS ALL SIGNATURES COMPLETED	
KCI ASSOCIATES OF N.C., P.A. 4505 Falls of Noe Road, Suite 400 Raleigh, NC 27609-6270 Phone (919) 783-9314 NC Firm License No. C-0764	
ETHERILL ENGINEERING 1223 Jones Franklin Rd. Raleigh, N.C. 27606 License No. F-43377 Bus: 919 851 8077 Fax: 919 851 8107	
TRANSPORTATION DESIGN/DESIGN - BRIDGE/STRUCTURE DESIGN CIVIL/SITE DESIGN - GIS/GPS - CONSTRUCTION OBSERVATION	



MATCHLINE -LI_EB- STA 50+00 - SEE SHEET 12

43

NO CLAIM
42

END TIP PROJECT I-2513AB
-LI_EB- POC STA. 37+52.00
(APPROACH SLAB)

FOR -LI_EB- PROFILE SEE SHEET 27
FOR -LI_WB- PROFILE SEE SHEET 28
FOR -RPD- PROFILE SEE SHEET 29
FOR DRAINAGE DETAILS, SEE SHEET 20-1

12/1/2023
I-2513AA_rdy_psh_13.dgn
TULLES.COPEL