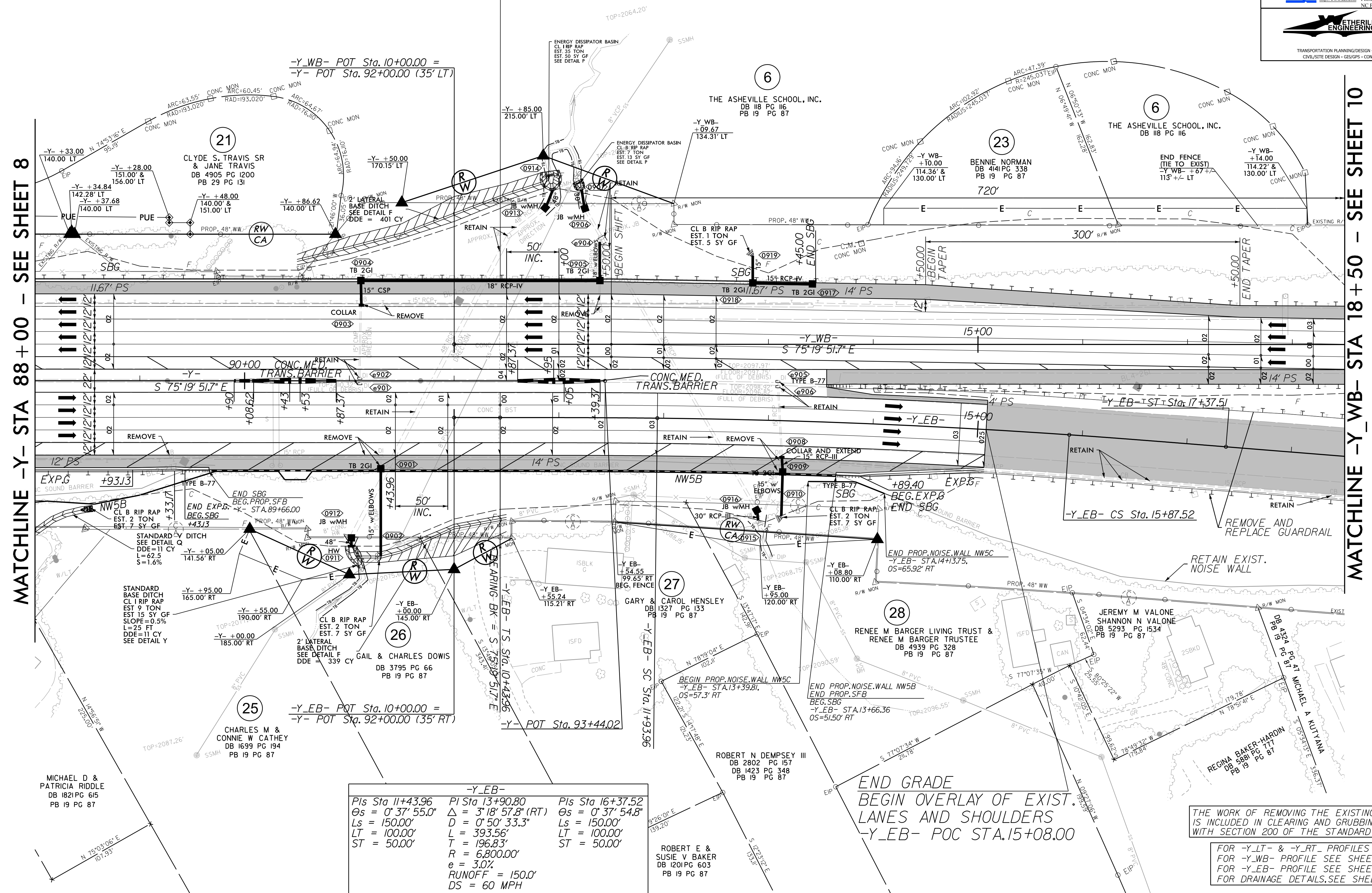


PROJECT REFERENCE NO. I-2513AA/AB		SHEET NO. 9	
RW SHEET NO.			
ROADWAY DESIGN ENGINEER BARRY C SMITH 034375		HYDRAULICS ENGINEER MATTHEW L HALEY 053425	
2/8/2024		2/8/2024	
DOCUMENT NOT CONSIDERED FINAL UNLESS ALL SIGNATURES COMPLETED			
KCI ASSOCIATES OF N.C., P.A. 4505 Falls of Noce Road, Suite 400 Raleigh, NC 27609-6270 Phone (919) 783-9214 NC Firm License No. C-0764		ETHERILL ENGINEERING 1223 Jones Franklin Rd. Raleigh, N.C. 27606 License No. F-3377 Bus: 919 851 8077 Fax: 919 851 8107	

END PAVEMENT RECONSTRUCTION (I-2513AA)  
END CONCRETE LANES  
-Y- STA.92+44.00 LT & RT



MATCHLINE -Y- STA 88+00 - SEE SHEET 8

MATCHLINE -Y\_WB- STA 18+50 - SEE SHEET 10

-Y\_EB-

Pls Sta 11+43.96	Pl Sta 13+90.80	Pls Sta 16+37.52
Os = 0' 37' 55.0"	Δ = 3' 18' 57.8" (RT)	Os = 0' 37' 54.8"
Ls = 150.00'	D = 0' 50' 33.3"	Ls = 150.00'
LT = 100.00'	L = 393.56'	LT = 100.00'
ST = 50.00'	T = 196.83'	ST = 50.00'
	R = 6,800.00'	
	e = 3.0%	
	RUNOFF = 150.0'	
	DS = 60 MPH	

END GRADE  
BEGIN OVERLAY OF EXIST.  
LANES AND SHOULDERS  
-Y\_EB- POC STA.15+08.00

THE WORK OF REMOVING THE EXISTING NOISE WALL IS INCLUDED IN CLEARING AND GRUBBING, IN ACCORDANCE WITH SECTION 200 OF THE STANDARD SPECIFICATIONS.

FOR -Y\_LT- & -Y\_RT- PROFILES SEE SHEET 20  
FOR -Y\_WB- PROFILE SEE SHEET 21  
FOR -Y\_EB- PROFILE SEE SHEET 21  
FOR DRAINAGE DETAILS, SEE SHEET 20-1