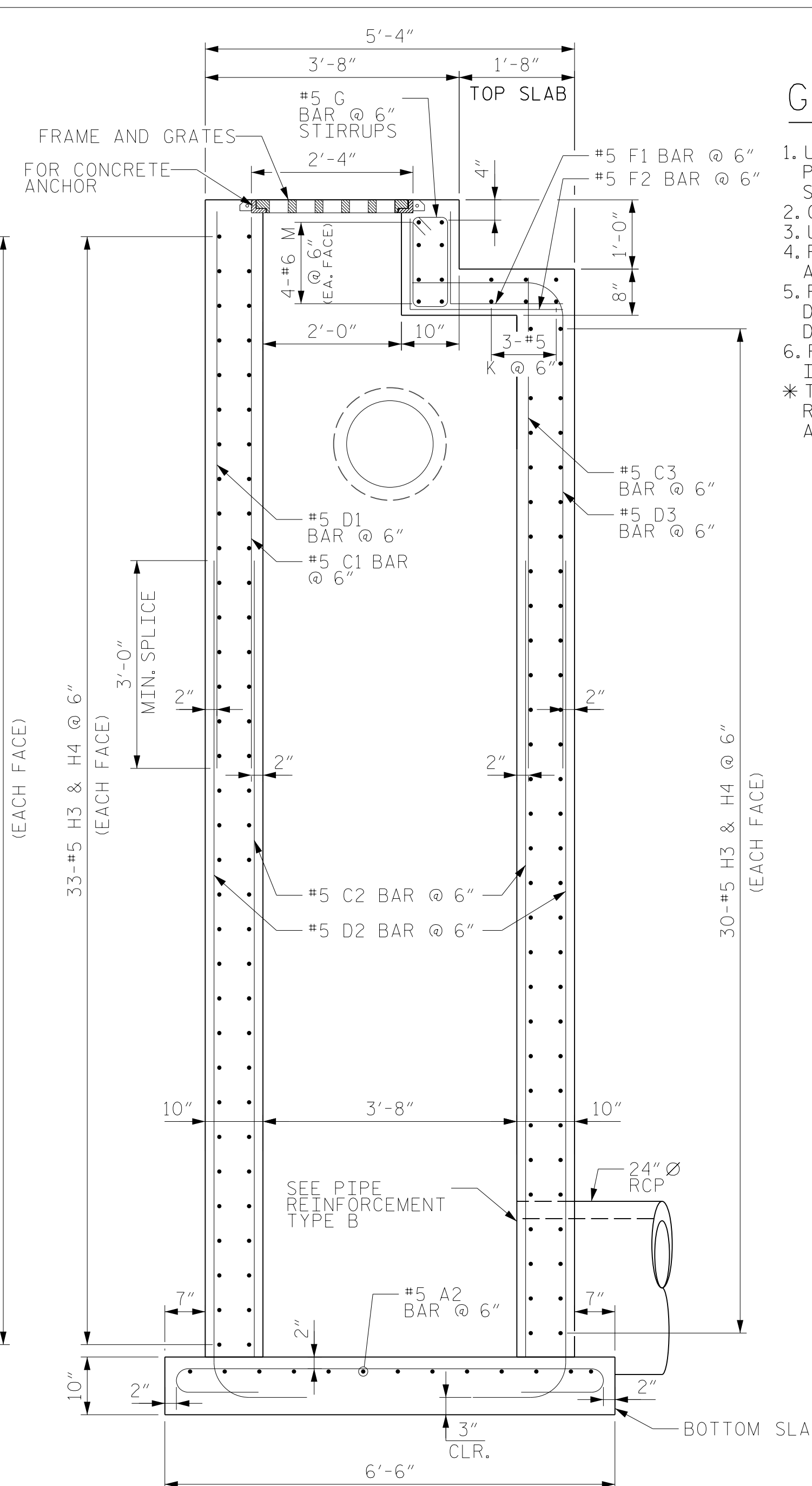
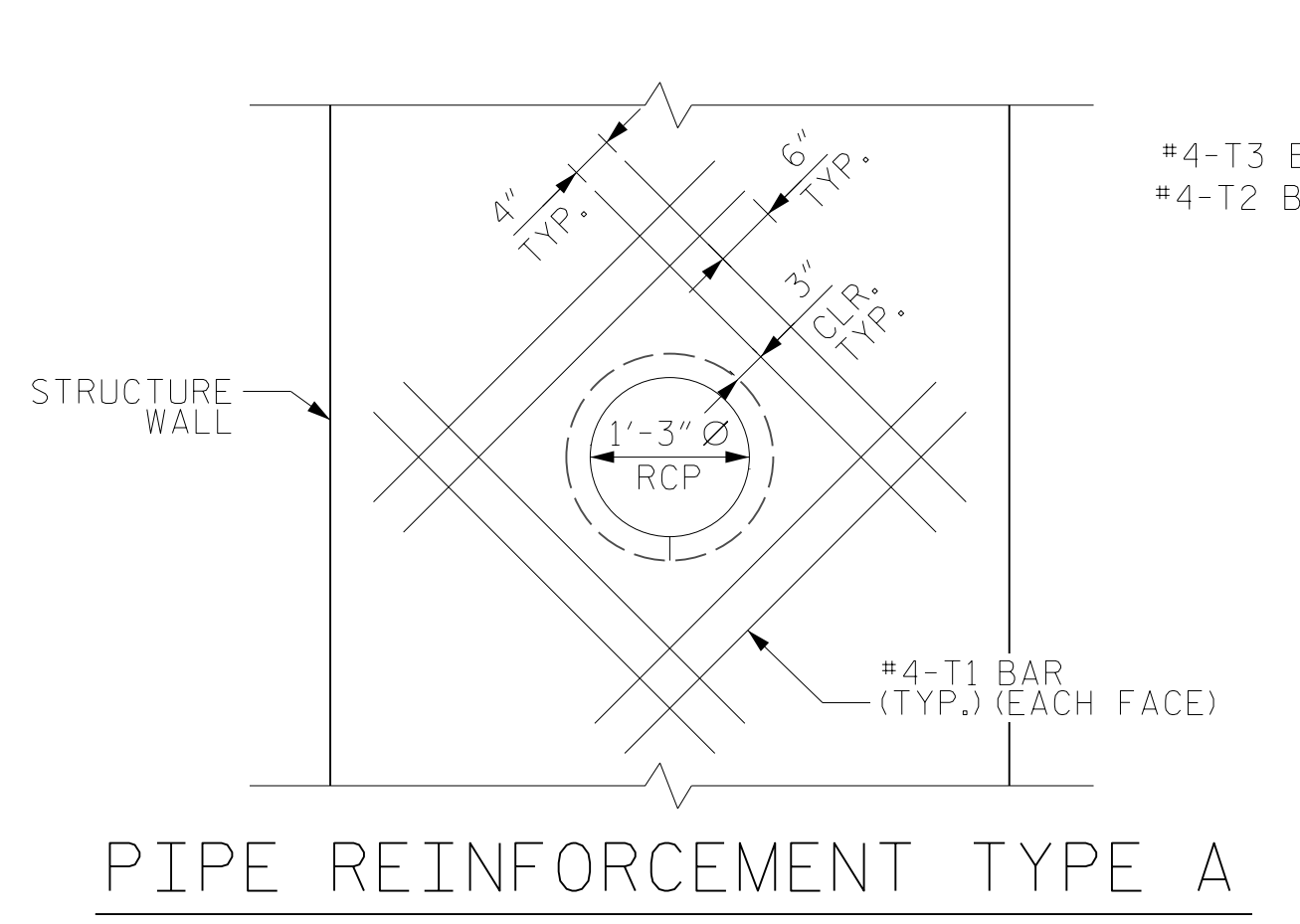


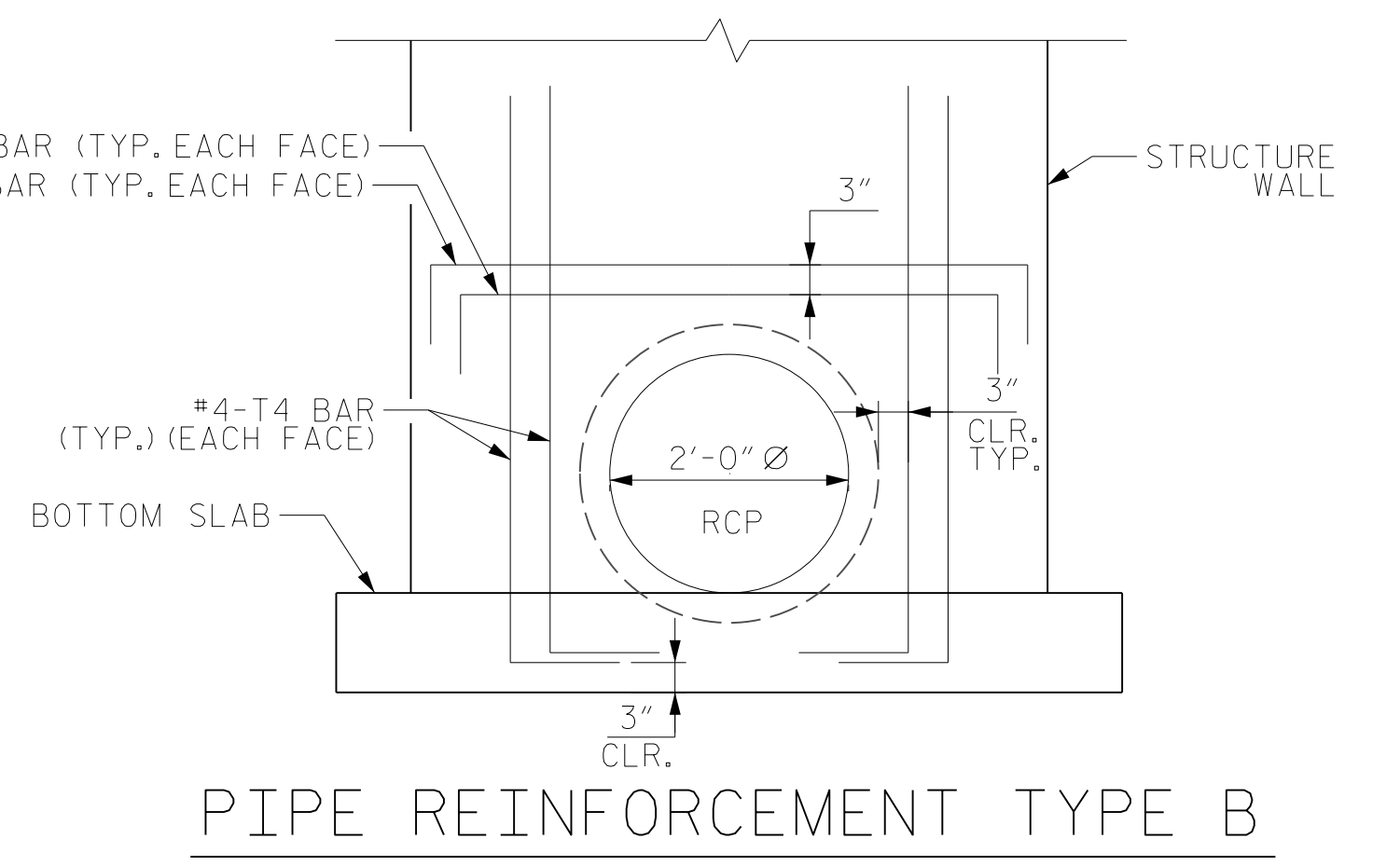
SECTION X-X



SECTION Y-Y



PIPE REINFORCEMENT TYPE A



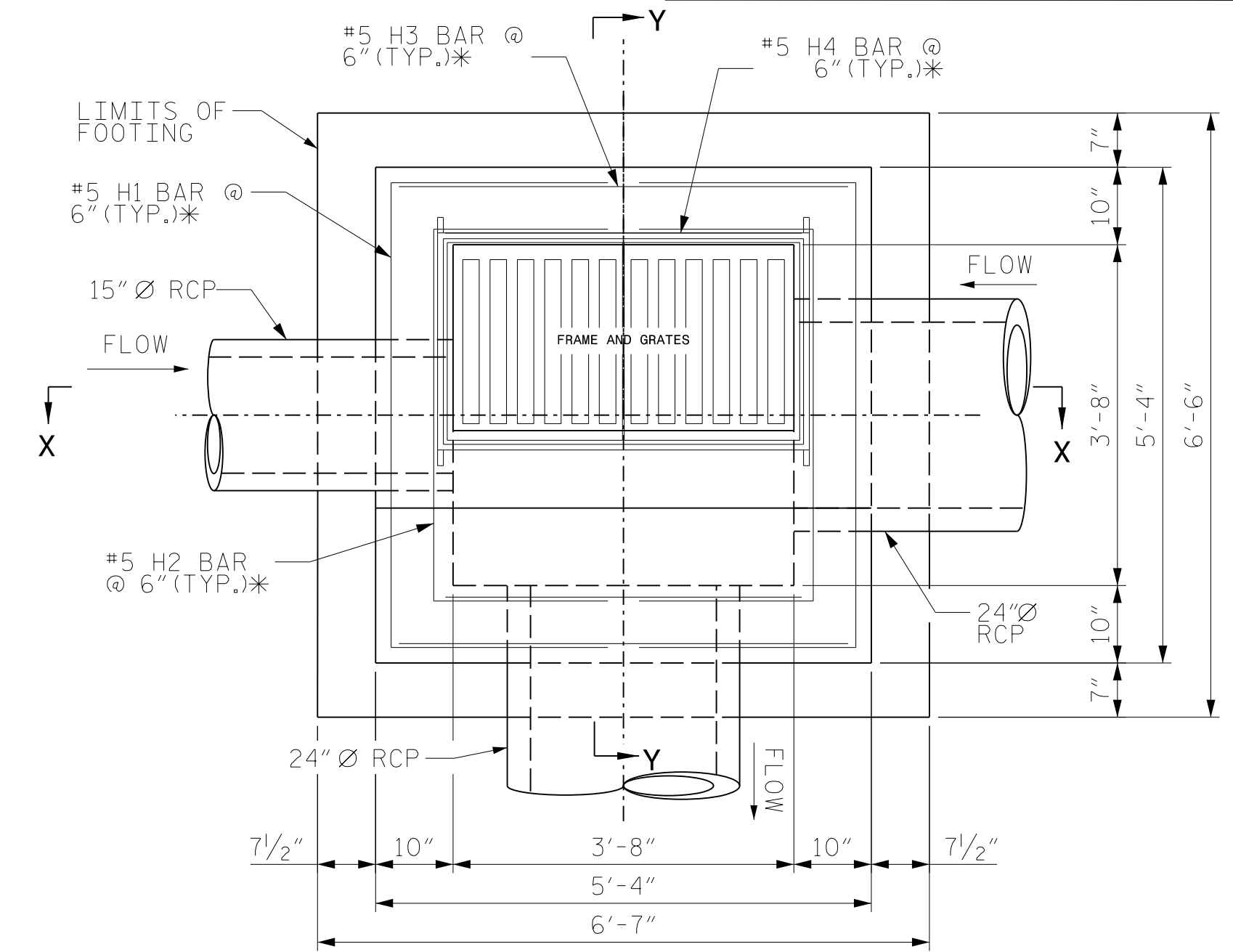
PIPE REINFORCEMENT TYPE B

GENERAL NOTES:

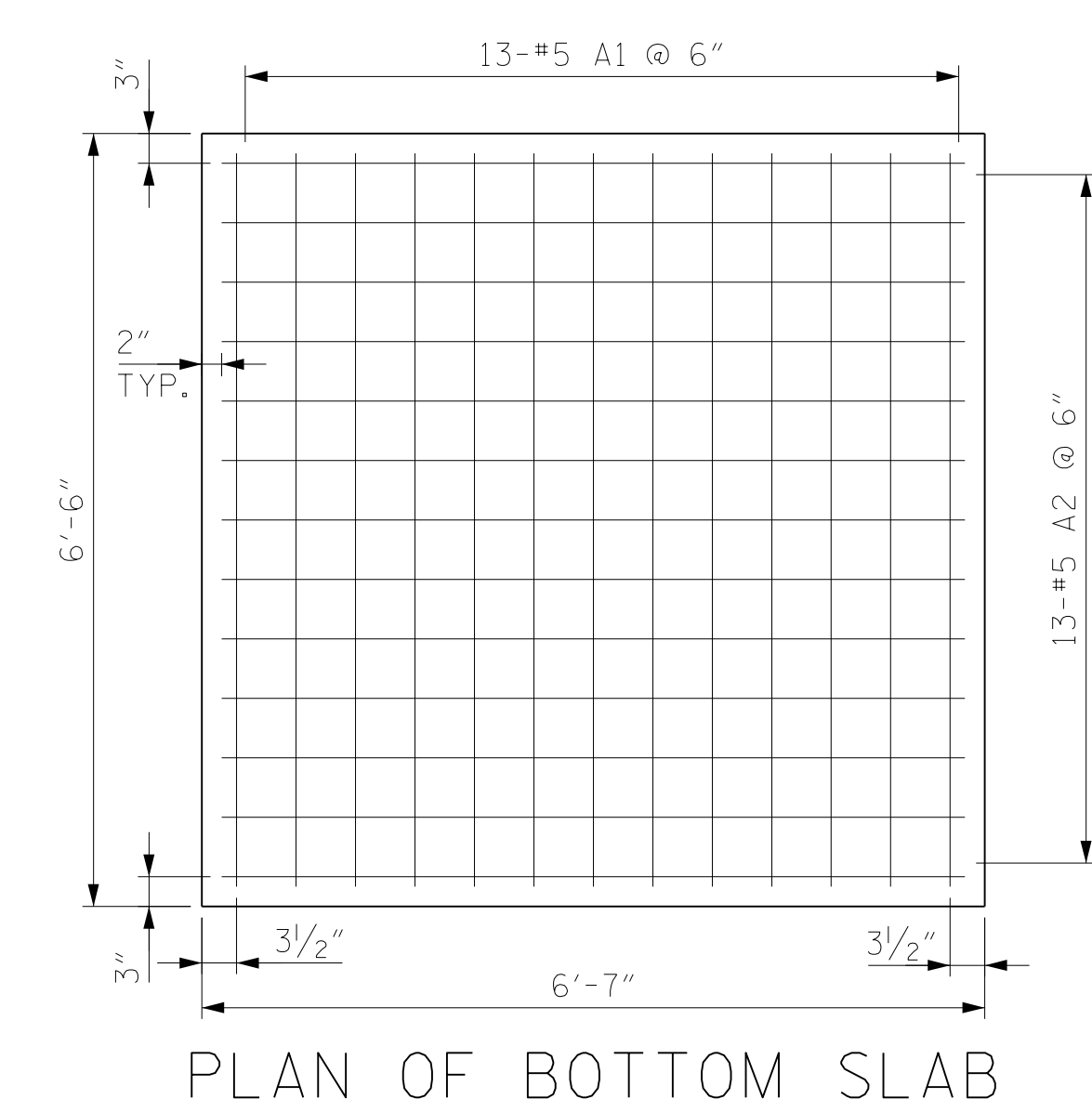
1. USE CLASS 'AA' CONCRETE FOR CAST IN PLACE CONCRETE BOX WALLS AND BOTTOM SLAB.
 2. CHAMFER ALL EXPOSED CONCRETE CORNERS 1" DEEP WITH STEPS SPACED 12" ON CENTER AS DIRECTED BY STD. DWG. 840.66.
 3. USE FORMS TO CONSTRUCT THE BOTTOM SLAB.
 4. REFERENCE STD. DWG. 840.25 FOR FRAME ANCHORAGE.
 5. PROVIDE GRATED DROP INLETS OVER 3'-6" DEEP WITH STEPS SPACED 12" ON CENTER AS DIRECTED BY STD. DWG. 840.66.
 6. FRAME AND GRATES ARE SEPARATE CONTRACT ITEMS.
- * TRIM HORIZONTAL AND VERTICAL REINFORCEMENT 3" CLR. FROM PIPE OPENING AT NEEDED LOCATIONS.

BILL OF MATERIAL					
DROPS INLET STRUCTURE NO.1013					
DIMENSIONS ARE OUT TO OUT					
BAR	NO.	SIZE	TYPE	LENGTH	WEIGHT
A1	13	#5	2	7'-4"	99
A2	13	#4	2	7'-5"	101
C1	26	#5	STR	7'-11"	215
C2	34	#5	STR	11'-6"	408
C3	8	#5	STR	7'-2"	60
D1	32	#5	STR	8'-1"	270
D2	42	#5	1	13'-3"	580
D3	10	#5	4	9'-0"	94
H1	66	#5	3	9'-8"	665
H2	66	#5	3	7'-8"	528
H3	63	#5	STR	4'-10"	318
H4	63	#5	STR	3'-10"	252
F1	10	#5	5	3'-0"	31
F2	10	#5	5	3'-5"	36
G	10	#4	6	4'-3"	28
K	3	#5	7	9'-2"	29
M	8	#6	STR	5'-0"	60
T1	16	#4	STR	3'-10"	41
T2	4	#4	3	6'-4"	17
T3	4	#4	3	5'-10"	16
T4	16	#4	5	5'-5"	58

REINFORCING STEEL FOR TOP SLAB & WALLS AND BOTTOM SLAB 3910 LBS.

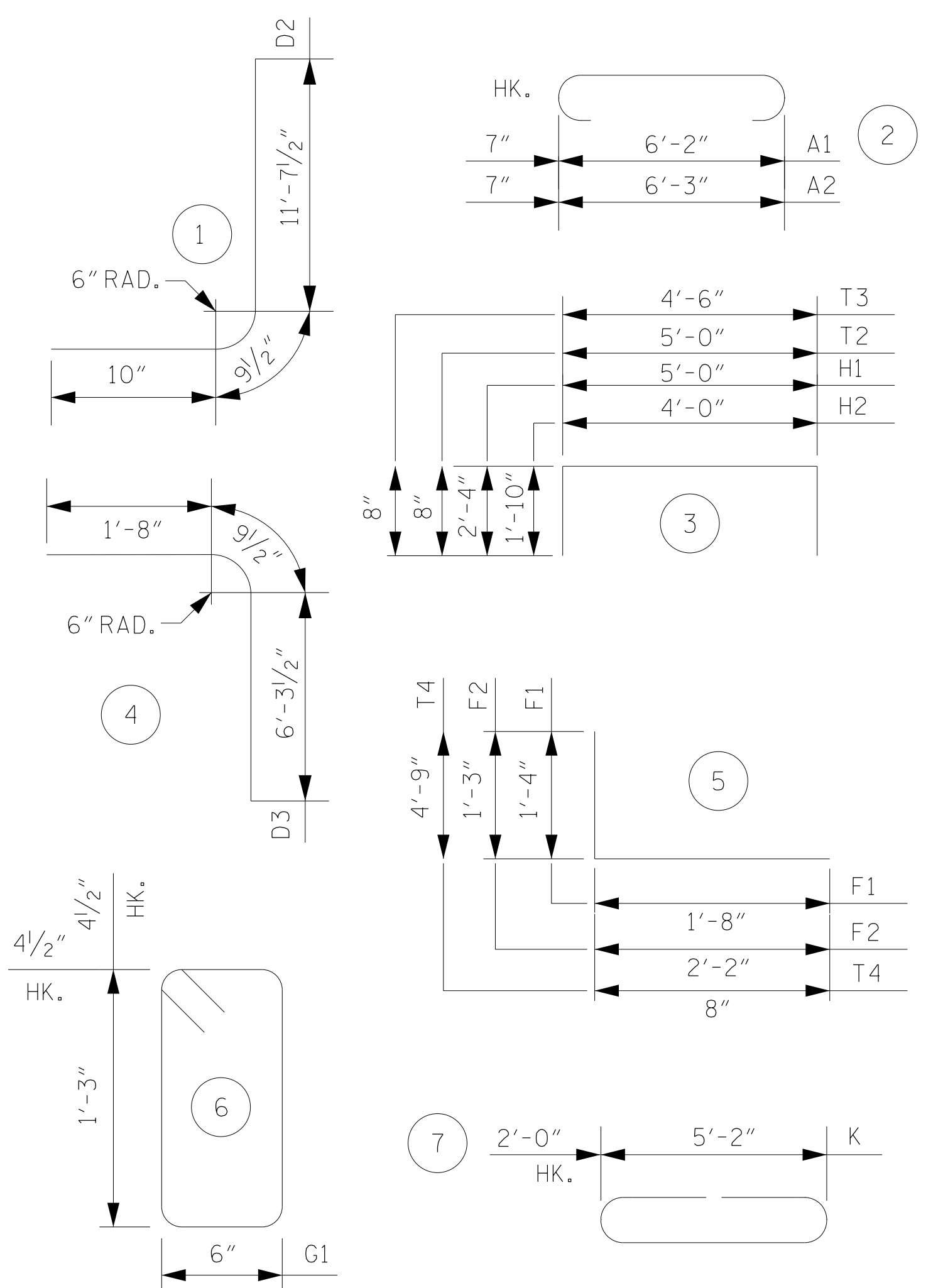


STRUCTURE PLAN



PLAN OF BOTTOM SLAB

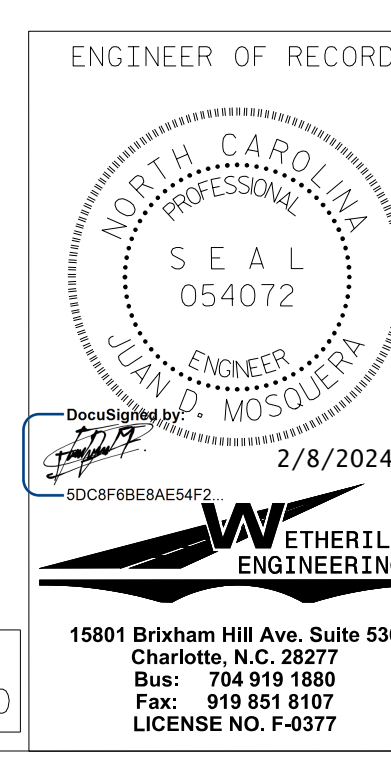
BAR TYPES



STRUCTURE QUANTITIES

REINFORCING STEEL FOR TOP SLAB & WALLS AND BOTTOM SLAB	3910 LBS.
CLASS A CONCRETE	
1 TOP SLAB & 4 WALLS	9.2 C.Y.
1 BOTTOM SLAB	1.3 C.Y.
TOTAL	10.5 C.Y.

PROJECT NO. I-2513 AA/AB
BUNCOMBE COUNTY
 STATION: 93+39 LEFT



STATE OF NORTH CAROLINA DEPARTMENT OF TRANSPORTATION RALEIGH					
SPECIAL JUNCTION BOX FOR TRAFFIC BEARING DROP INLET NO. 1013					
REVISIONS					
NO.	BY:	DATE:	NO.	BY:	DATE:
1			3		
2			4		
					SHEET NO. 2D-13
					TOTAL SHEETS 3

DOCUMENT NOT CONSIDERED FINAL
UNLESS ALL SIGNATURES COMPLETED

15801 Brixham Hill Ave, Suite 530
Charlotte, N.C. 28277
Bus: 704 919 1880
Fax: 919 851 8107
LICENSE NO. F-0377

\$FILE\$ \$DATE\$ \$TIME\$

DRAWN BY: D. MOSQUERA DATE: 9/13/2023
 CHECKED BY: J. DILWORTH DATE: 9/13/2023