

5/14/2023 10:14:20 AM Barry Smith

# TEMPORARY DETOUR DETAIL (-Y5RPBDET-)

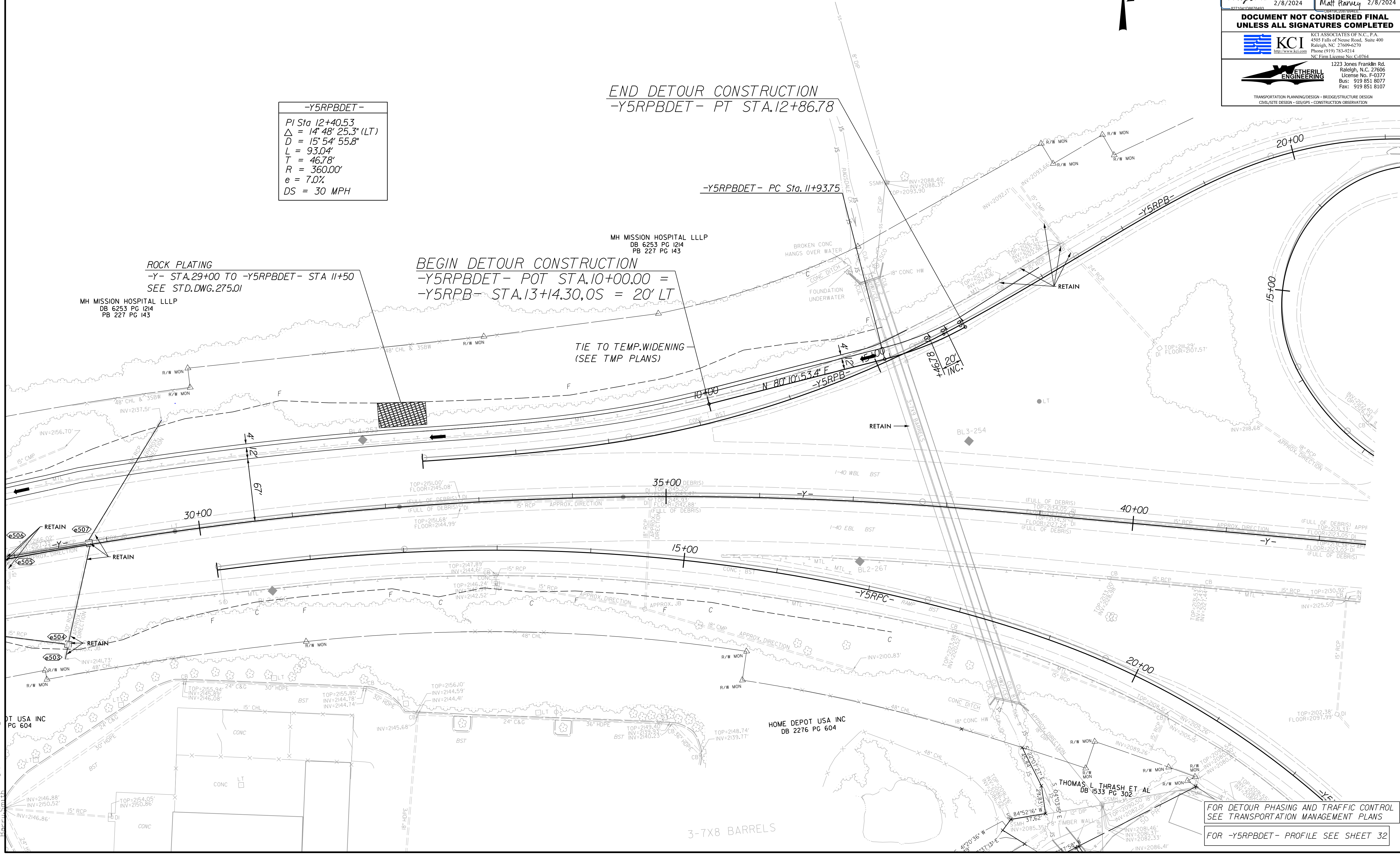
PROJECT REFERENCE NO. 1-2513AA/AB		SHEET NO. 2B-3	
RW SHEET NO.			
ROADWAY DESIGN ENGINEER BARRY C SMITH SEAL 034375 2/8/2024		HYDRAULICS ENGINEER MATTHEW L HARVEY SEAL 053425 2/8/2024	
DOCUMENT NOT CONSIDERED FINAL UNLESS ALL SIGNATURES COMPLETED			
KCI ASSOCIATES OF N.C., P.A. 4505 Falls of Noce Road, Suite 400 Raleigh, NC 27609-6270 Phone (919) 783-9214 NC Firm License No. C-0764		ETHERILL ENGINEERING 1223 Jones Franklin Rd. Raleigh, N.C. 27606 License No. F-0377 Bus: 919 851 8077 Fax: 919 851 8107	
TRANSPORTATION PLANNING/DESIGN - BRIDGE/STRUCTURE DESIGN CIVIL/SITE DESIGN - GIS/GPS - CONSTRUCTION OBSERVATION			

**-Y5RPBDET-**  
 PI Sta 12+40.53  
 $\Delta = 14^{\circ} 48' 25.3" (LT)$   
 $D = 15^{\circ} 54' 55.8"$   
 $L = 93.04'$   
 $T = 46.78'$   
 $R = 360.00'$   
 $e = 7.0\%$   
 $DS = 30 MPH$

END DETOUR CONSTRUCTION  
 -Y5RPBDET- PT STA.12+86.78

ROCK PLATING  
 -Y- STA.29+00 TO -Y5RPBDET- STA 11+50  
 SEE STD.DWG.275.01

BEGIN DETOUR CONSTRUCTION  
 -Y5RPBDET- POT STA.10+00.00 =  
 -Y5RPB- STA.13+14.30,0S = 20' LT



FOR DETOUR PHASING AND TRAFFIC CONTROL  
 SEE TRANSPORTATION MANAGEMENT PLANS  
 FOR -Y5RPBDET- PROFILE SEE SHEET 32

3-7X8 BARRELS