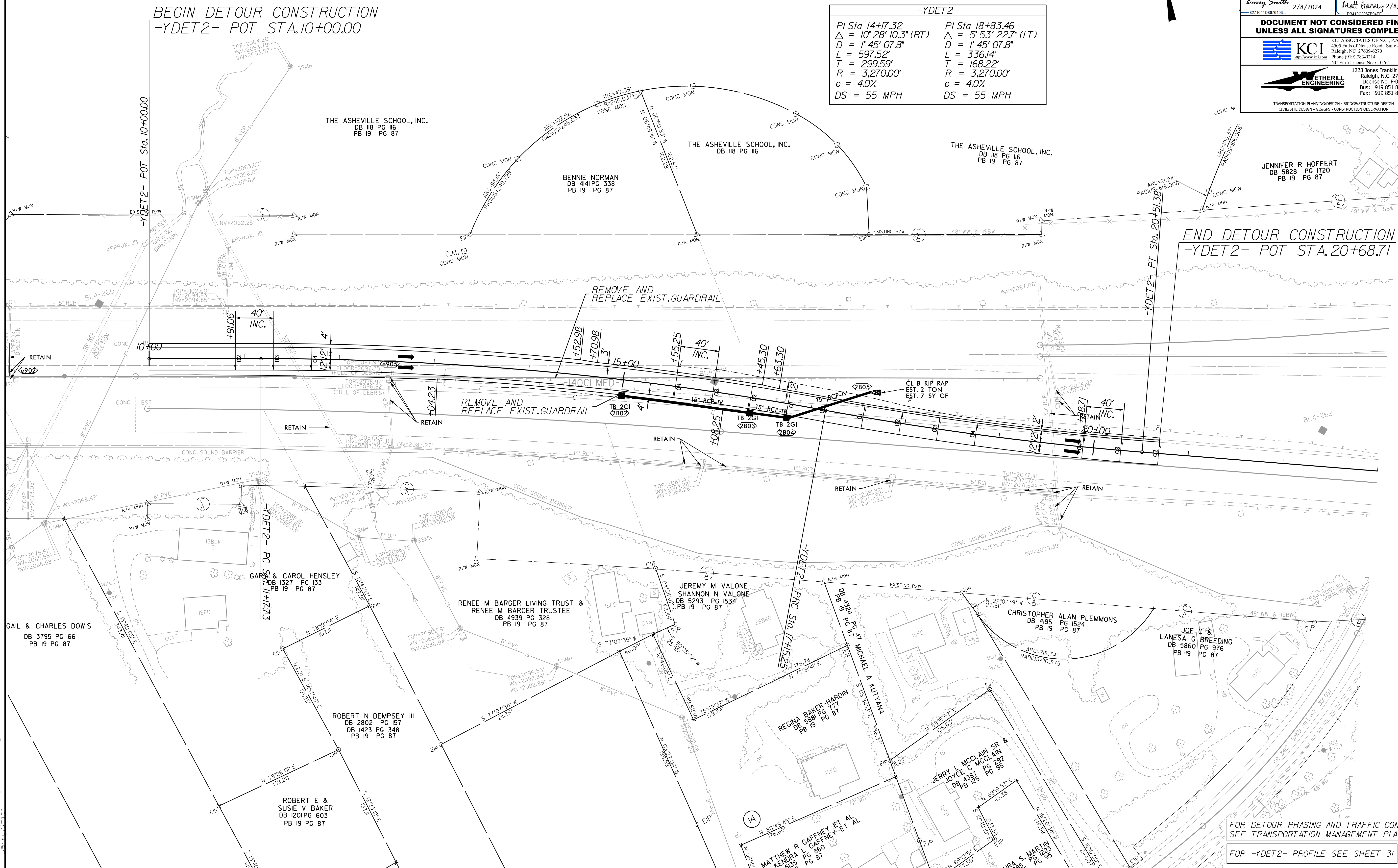


5/14/2024
9/15/2023
Barrill Smith

TEMPORARY DETOUR DETAIL (-YDET2-)

PROJECT REFERENCE NO. I-2513AA/AB		SHEET NO. 2B-2	
ROADWAY DESIGN ENGINEER BARRY C SMITH SEAL 034375 2/8/2024		HYDRAULICS ENGINEER MATTHEW HALEY SEAL 053425 2/8/2024	
DOCUMENT NOT CONSIDERED FINAL UNLESS ALL SIGNATURES COMPLETED			
KCI ASSOCIATES OF N.C., P.A. 4505 Falls of Noce Road, Suite 400 Raleigh, NC 27609-4270 Phone (919) 783-9214 NC Firm License No. C-0764		ETHERILL ENGINEERING 1223 Jones Franklin Rd. Raleigh, N.C. 27606 License No. F-3377 Bus: 919 851 8077 Fax: 919 851 8107	

-YDET2-	
PI Sta 14+7.32	PI Sta 18+83.46
$\Delta = 10^\circ 28' 10.3''$ (RT)	$\Delta = 5^\circ 53' 22.7''$ (LT)
$D = 1' 45' 07.8''$	$D = 1' 45' 07.8''$
$L = 597.52'$	$L = 336.14'$
$R = 3,270.00'$	$R = 3,270.00'$
$e = 4.0\%$	$e = 4.0\%$
$DS = 55$ MPH	$DS = 55$ MPH



END DETOUR CONSTRUCTION
-YDET2- POT STA. 20+68.71

FOR DETOUR PHASING AND TRAFFIC CONTROL
SEE TRANSPORTATION MANAGEMENT PLANS
FOR -YDET2- PROFILE SEE SHEET 31