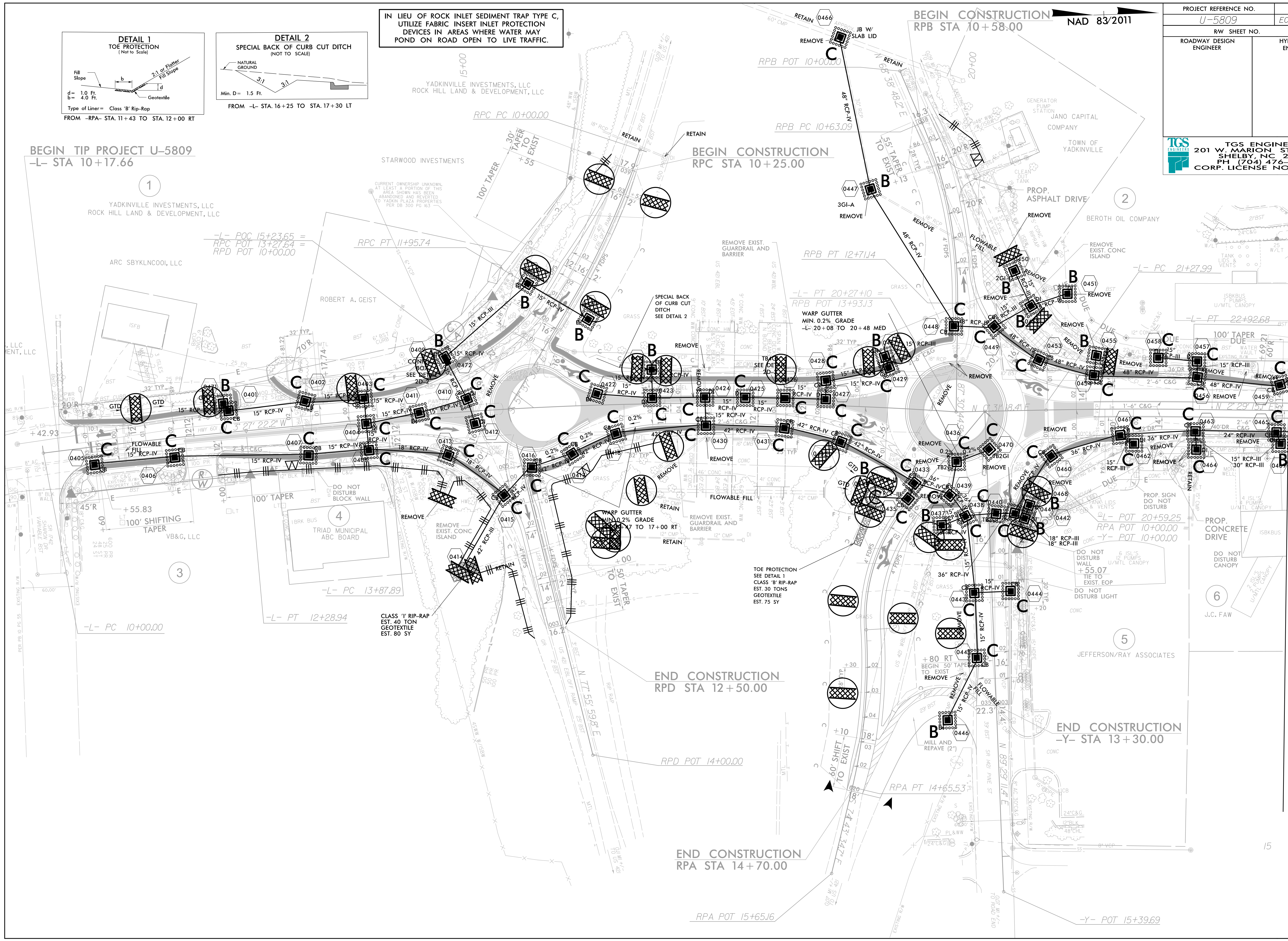


IN LIEU OF ROCK INLET SEDIMENT TRAP TYPE C,  
UTILIZE FABRIC INSERT INLET PROTECTION  
DEVICES IN AREAS WHERE WATER MAY  
POND ON ROAD OPEN TO LIVE TRAFFIC.

PROJECT REFERENCE NO. <i>U-5809</i>	SHEET NO. <i>EC-07/CONST.4</i>
RW SHEET NO.	
ROADWAY DESIGN ENGINEER	HYDRAULICS ENGINEER
<b>TGS ENGINEERS</b> 201 W. MARION ST-STE 200 SHELBY, NC 28150 PH (704) 476-0003 CORP. LICENSE NO.: C-0275	

BEGIN TIP PROJECT U-5809  
-L- STA 10+17.66



BEGIN CONSTRUCTION  
RPC STA 10+25.00

BEGIN CONSTRUCTION  
RPB STA 10+58.00  
NAD 83/2011

END CONSTRUCTION  
RPD STA 12+50.00

END CONSTRUCTION  
RPA STA 14+70.00

END CONSTRUCTION  
-Y- STA 13+30.00

MATCH LINE STA. -L- 24+00.00  
MATCH TO SHEET NO. 5