
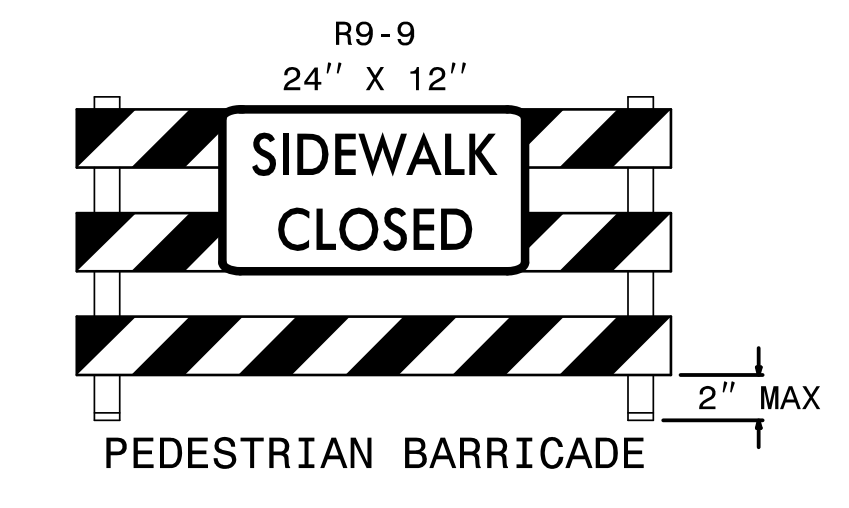
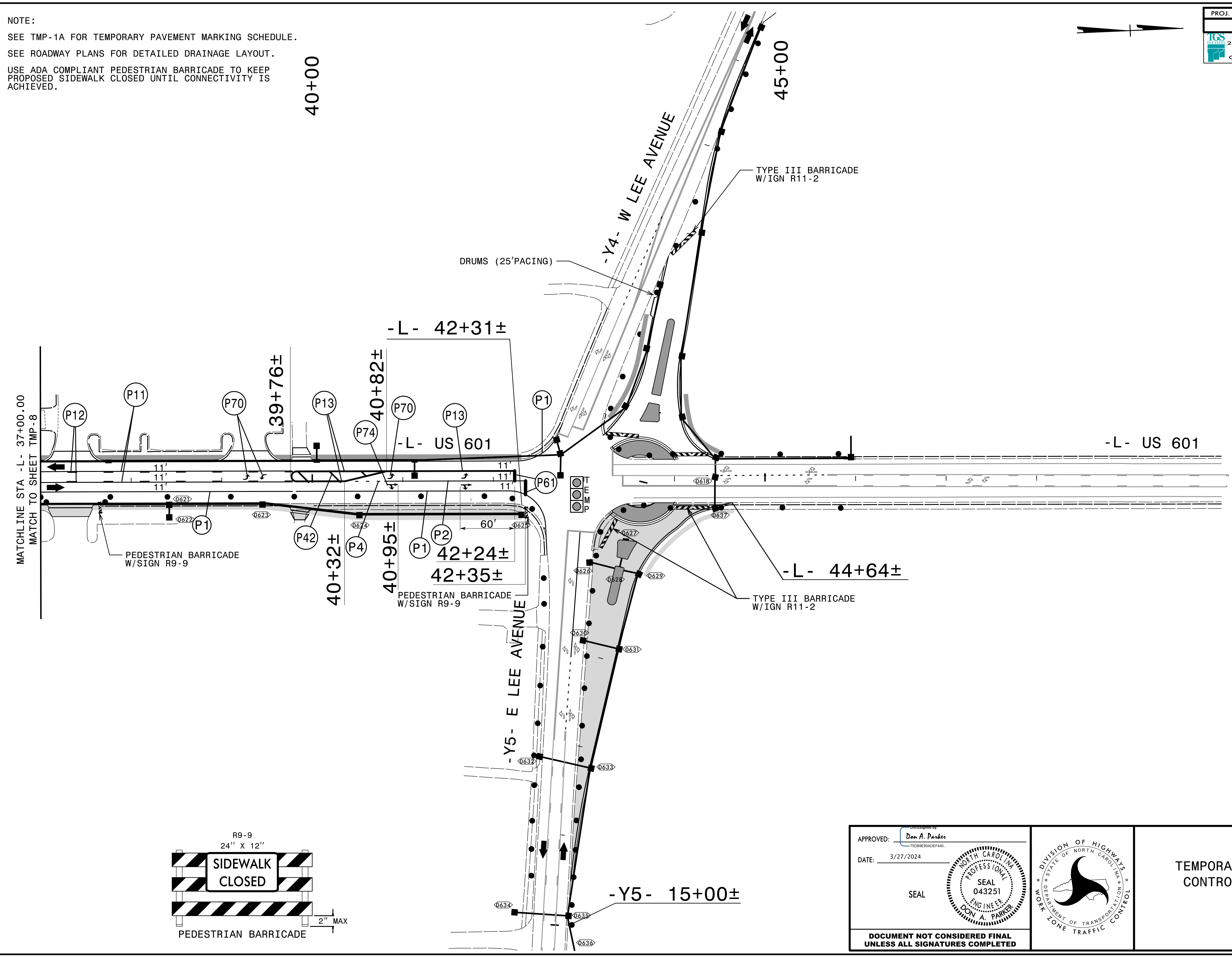
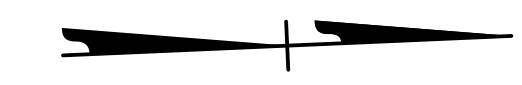


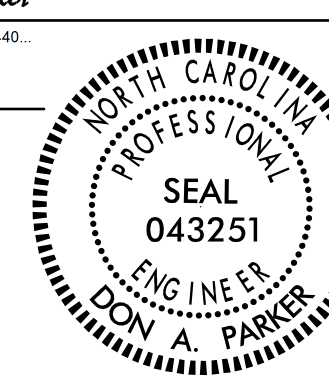
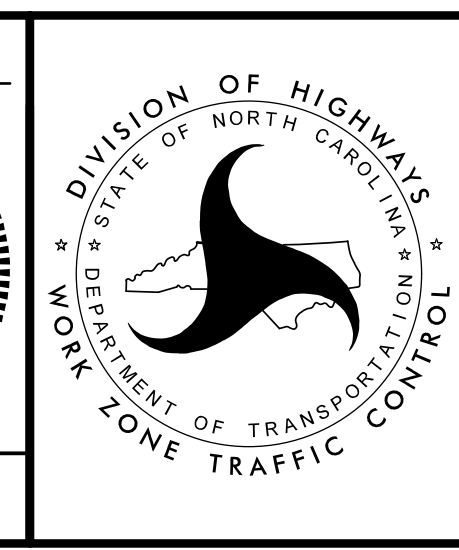
NOTE:
 SEE TMP-1A FOR TEMPORARY PAVEMENT MARKING SCHEDULE.
 SEE ROADWAY PLANS FOR DETAILED DRAINAGE LAYOUT.
 USE ADA COMPLIANT PEDESTRIAN BARRICADE TO KEEP PROPOSED SIDEWALK CLOSED UNTIL CONNECTIVITY IS ACHIEVED.

PROJ. REFERENCE NO.	SHEET NO.
U-5809	TMP-9
 TGS ENGINEERS 201 W. MARION ST. STE 200 SHELBY, NC 28150 PH (704) 476-0003 CORP. LICENSE NO.: C-0275	



APPROVED: *Don A. Parker*
 DATE: 3/27/2024

SEAL

TEMPORARY TRAFFIC CONTROL PHASE II

DOCUMENT NOT CONSIDERED FINAL UNLESS ALL SIGNATURES COMPLETED

3/26/2024
 U:\Projects\U-5809\TrafficControl\TCPU-5809-TC-TMP-09.dgn
 User: jsmelvin