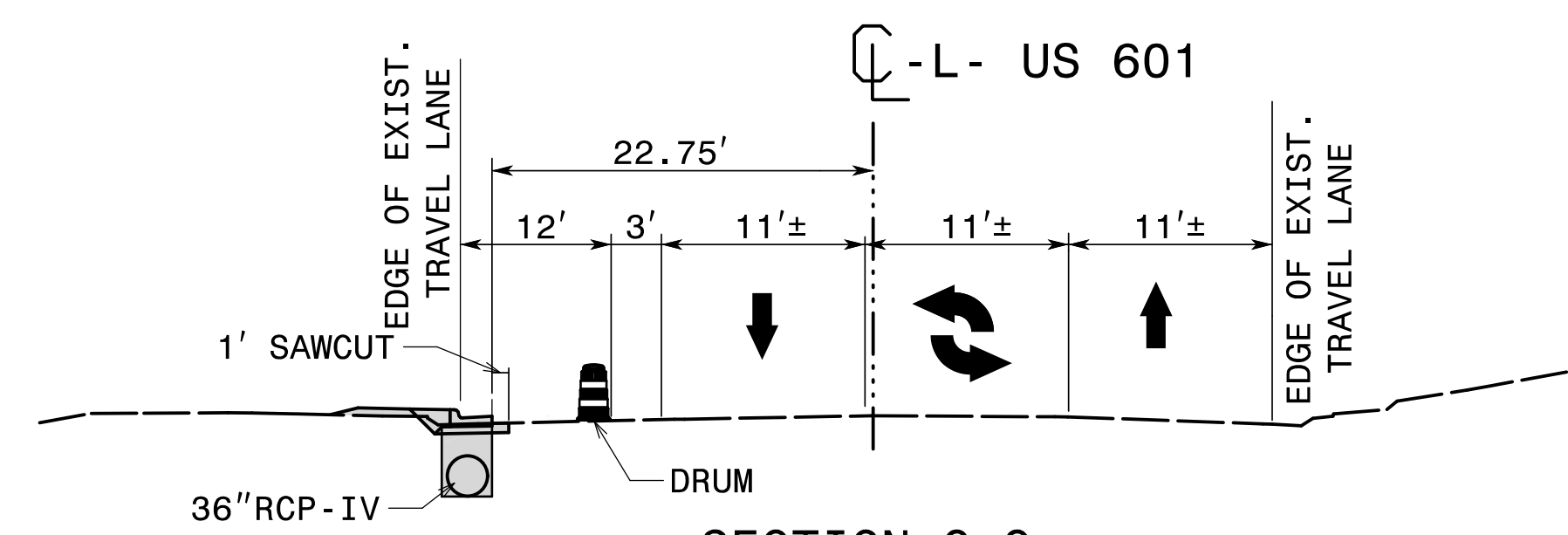
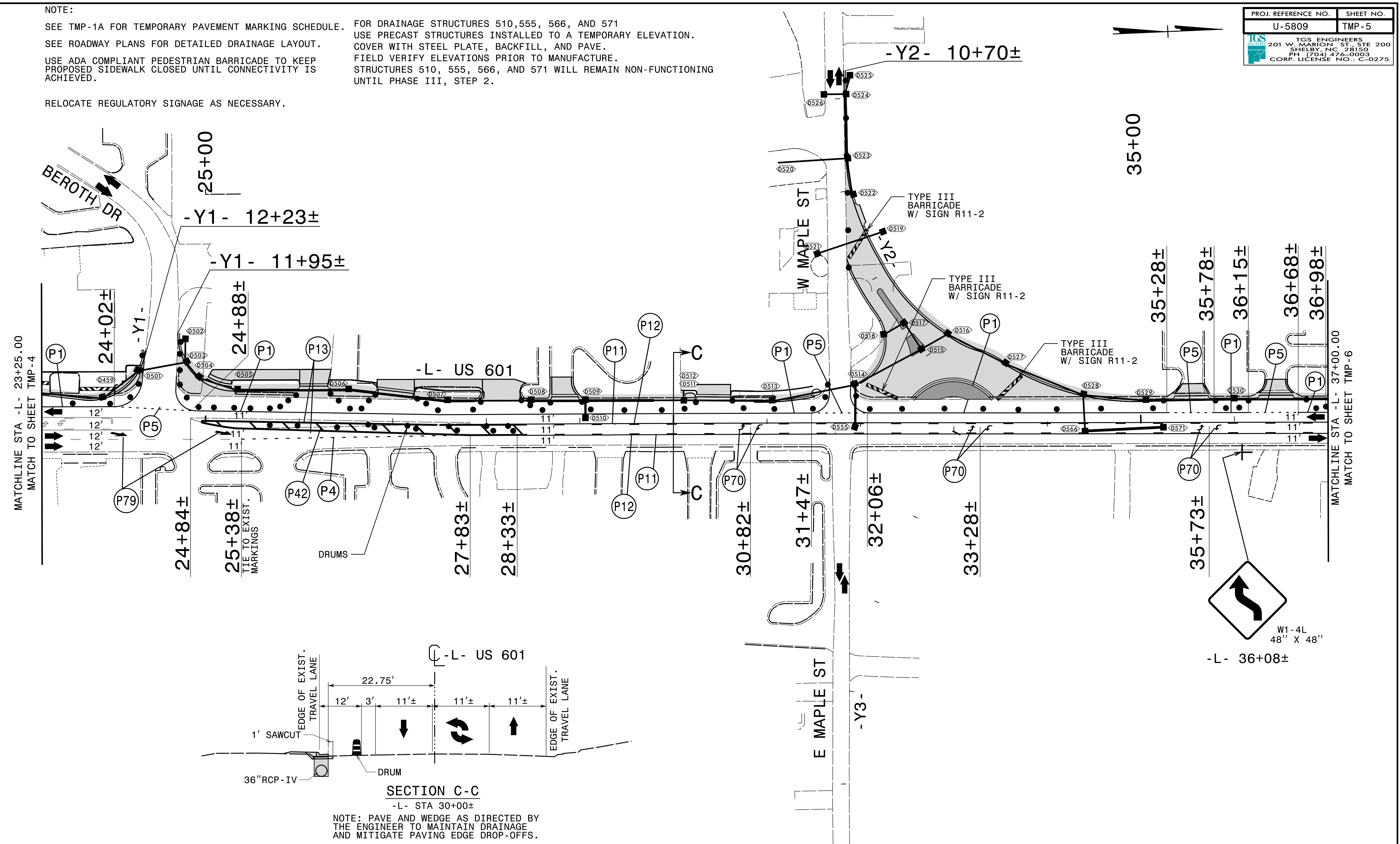


NOTE:  
 SEE TMP-1A FOR TEMPORARY PAVEMENT MARKING SCHEDULE.  
 SEE ROADWAY PLANS FOR DETAILED DRAINAGE LAYOUT.  
 USE ADA COMPLIANT PEDESTRIAN BARRICADE TO KEEP PROPOSED SIDEWALK CLOSED UNTIL CONNECTIVITY IS ACHIEVED.

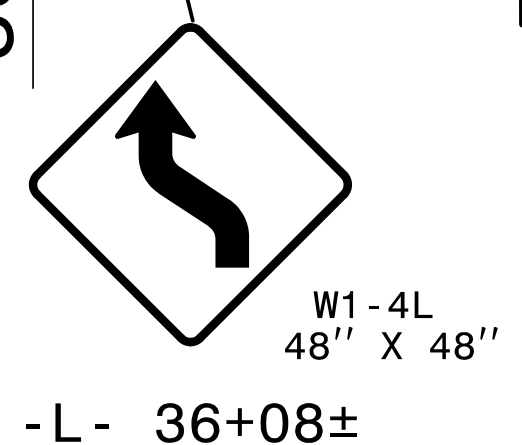
FOR DRAINAGE STRUCTURES 510, 555, 566, AND 571  
 USE PRECAST STRUCTURES INSTALLED TO A TEMPORARY ELEVATION.  
 COVER WITH STEEL PLATE, BACKFILL, AND PAVE.  
 FIELD VERIFY ELEVATIONS PRIOR TO MANUFACTURE.  
 STRUCTURES 510, 555, 566, AND 571 WILL REMAIN NON-FUNCTIONING UNTIL PHASE III, STEP 2.

RELOCATE REGULATORY SIGNAGE AS NECESSARY.

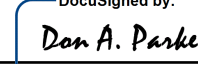


SECTION C-C  
 -L- STA 30+00±

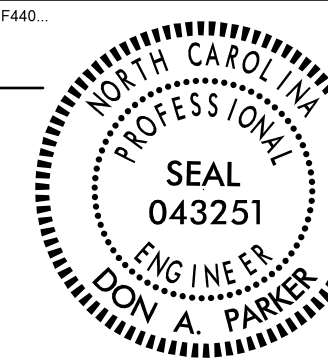
NOTE: PAVE AND WEDGE AS DIRECTED BY THE ENGINEER TO MAINTAIN DRAINAGE AND MITIGATE PAVING EDGE DROP-OFFS.



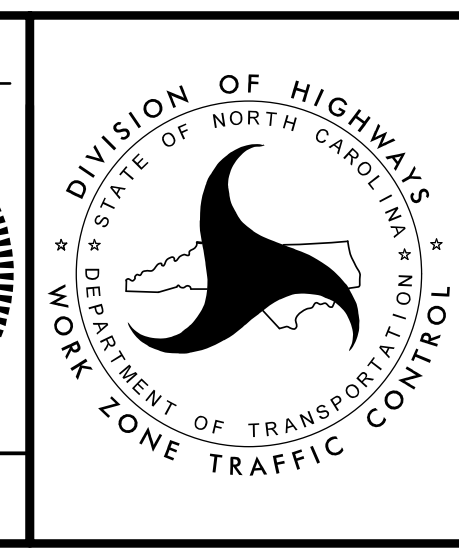
3/26/2024  
 U:\NC\2024\U-5809\Traffic\TrafficControl\TCP\U-5809\_TC\_TMP\_05.dgn  
 User: jsmelvin

APPROVED:   
 DATE: 3/27/2024

SEAL



DOCUMENT NOT CONSIDERED FINAL  
 UNLESS ALL SIGNATURES COMPLETED



TEMPORARY TRAFFIC CONTROL PHASE I