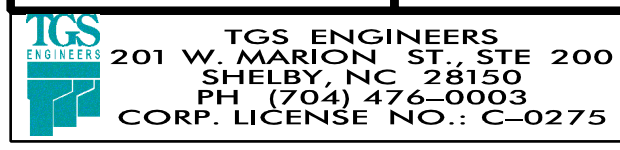
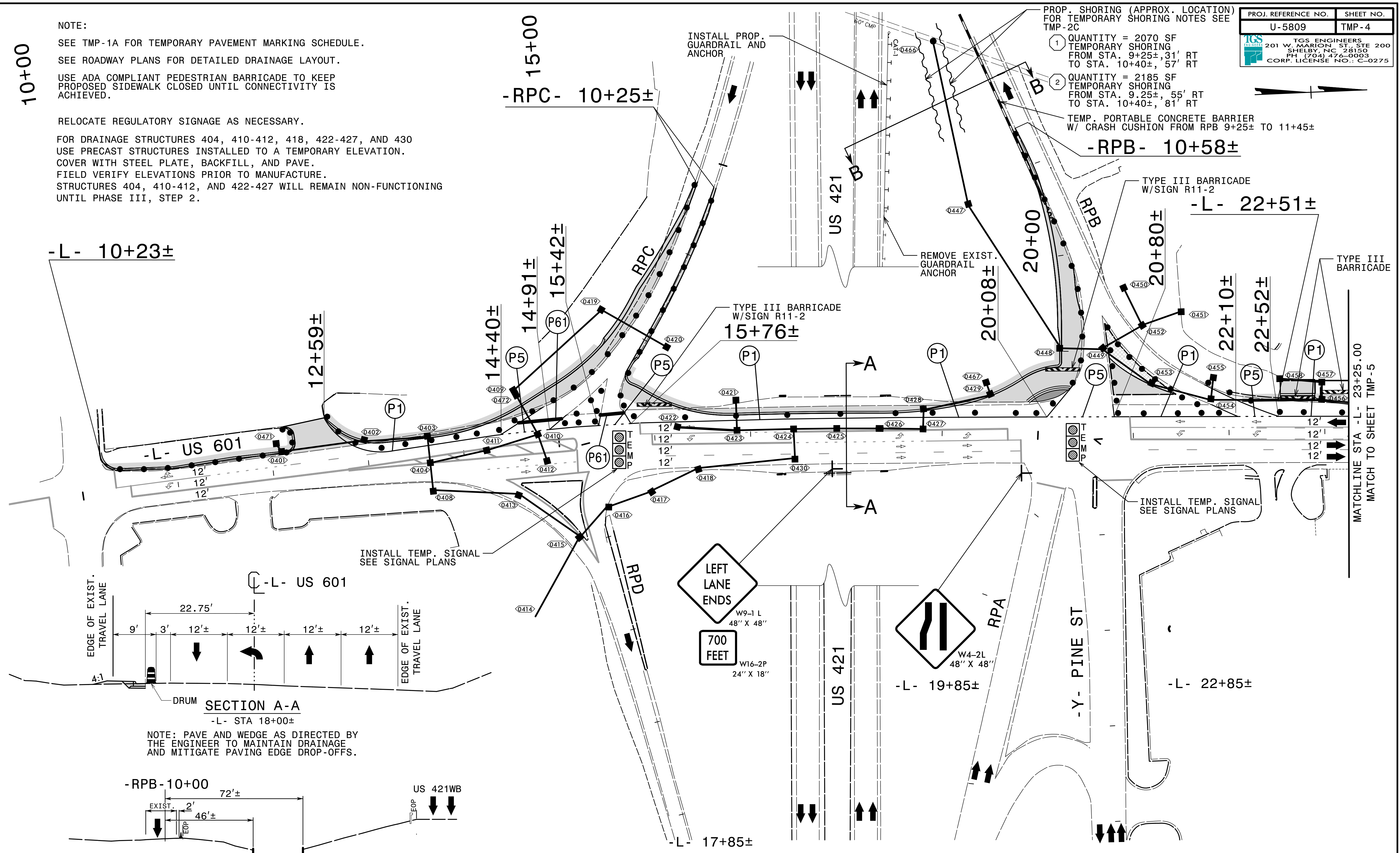


PROJ. REFERENCE NO.	SHEET NO.
U-5809	TMP-4
 TGS ENGINEERS 201 W. MARION ST. STE 200 SHELBY, NC 28150 PH: (704) 476-0003 CORP. LICENSE NO.: C-0275	

NOTE:
 SEE TMP-1A FOR TEMPORARY PAVEMENT MARKING SCHEDULE.
 SEE ROADWAY PLANS FOR DETAILED DRAINAGE LAYOUT.
 USE ADA COMPLIANT PEDESTRIAN BARRICADE TO KEEP PROPOSED SIDEWALK CLOSED UNTIL CONNECTIVITY IS ACHIEVED.
 RELOCATE REGULATORY SIGNAGE AS NECESSARY.
 FOR DRAINAGE STRUCTURES 404, 410-412, 418, 422-427, AND 430 USE PRECAST STRUCTURES INSTALLED TO A TEMPORARY ELEVATION. COVER WITH STEEL PLATE, BACKFILL, AND PAVE. FIELD VERIFY ELEVATIONS PRIOR TO MANUFACTURE. STRUCTURES 404, 410-412, AND 422-427 WILL REMAIN NON-FUNCTIONING UNTIL PHASE III, STEP 2.

PROP. SHORING (APPROX. LOCATION) FOR TEMPORARY SHORING NOTES SEE TMP-2C
 ① QUANTITY = 2070 SF TEMPORARY SHORING FROM STA. 9+25±, 31' RT TO STA. 10+40±, 57' RT
 ② QUANTITY = 2185 SF TEMPORARY SHORING FROM STA. 9.25±, 55' RT TO STA. 10+40±, 81' RT
 TEMP. PORTABLE CONCRETE BARRIER W/ CRASH CUSHION FROM RPB 9+25± TO 11+45±



-L- 10+23±

15+00
-RPC- 10+25±

-RPB- 10+58±

-L- 22+51±

-L- US 601

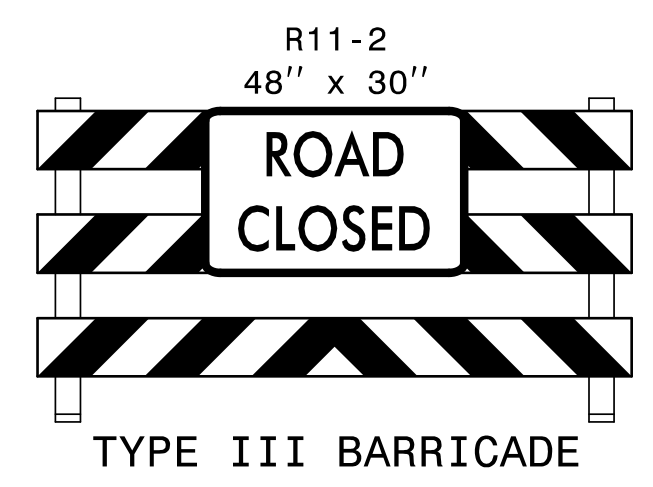
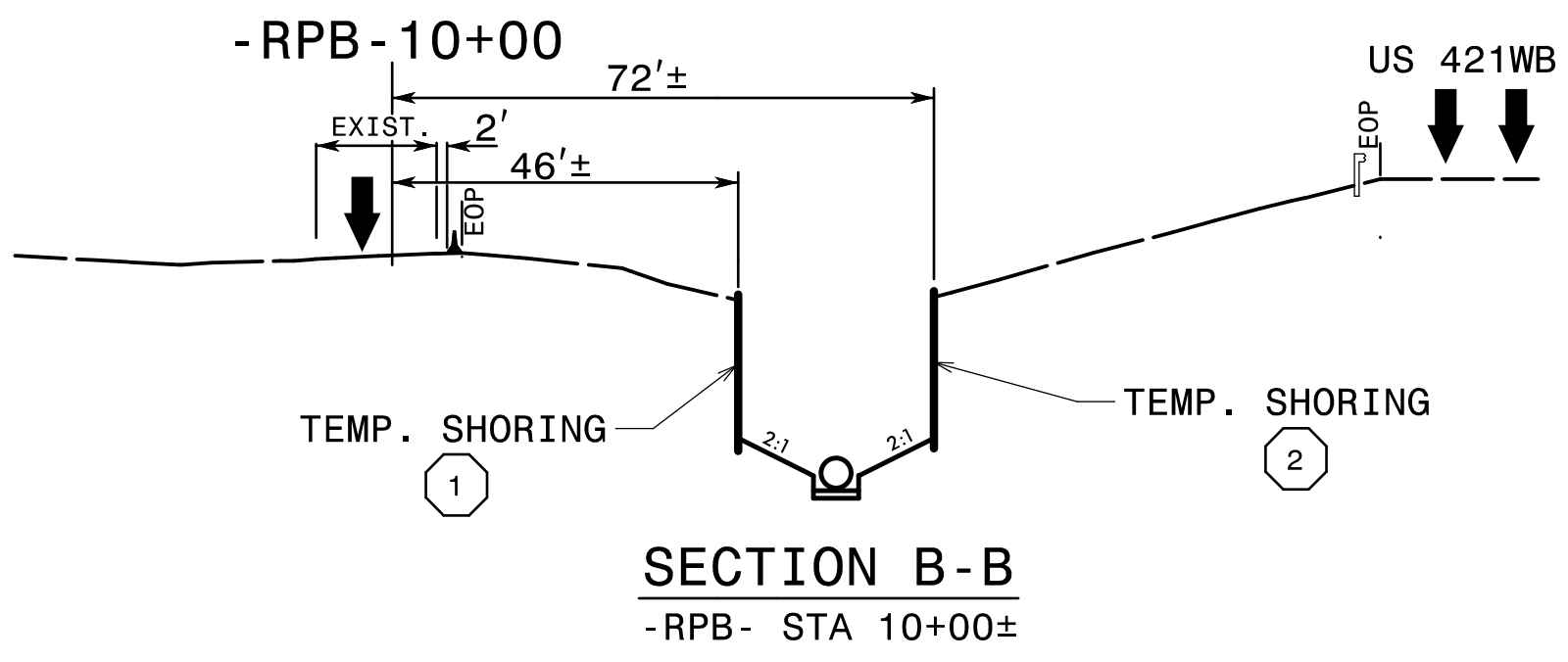
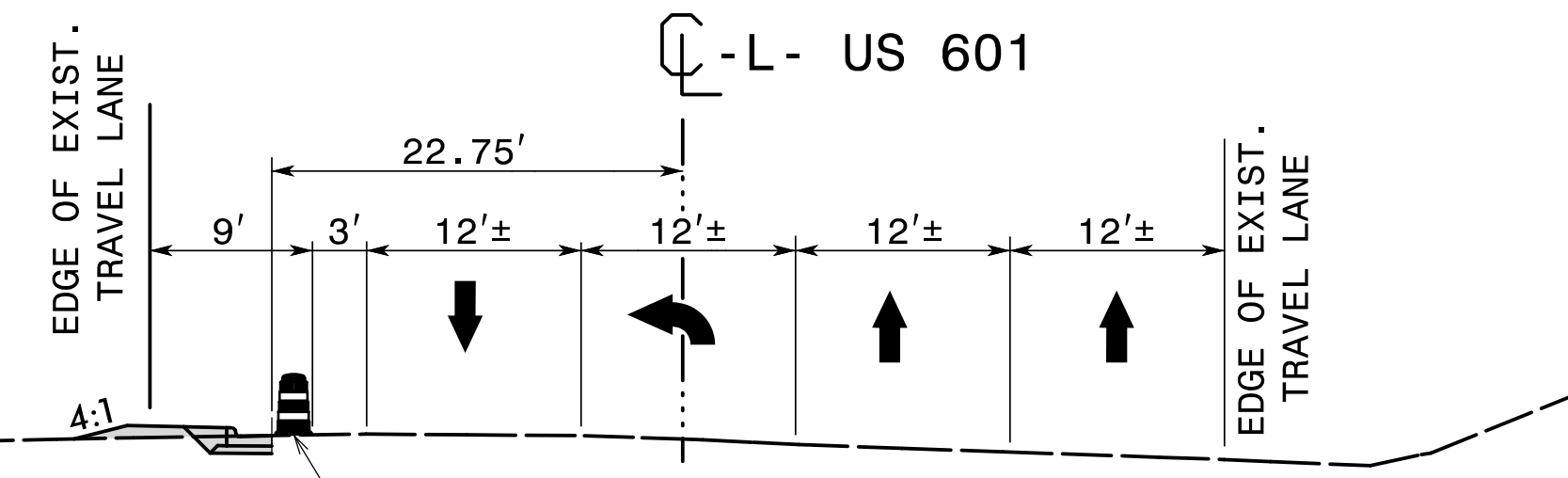
-L- US 601

-L- 19+85±

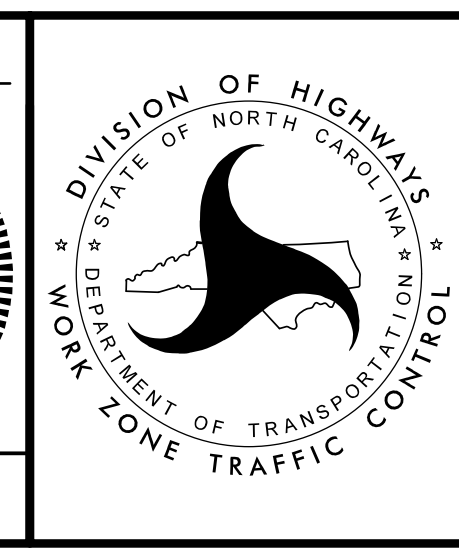
-L- 22+85±

-RPB- 10+00

-L- 17+85±



APPROVED: *Don A. Parker*
 DATE: 3/27/2024
 SEAL
 NORTH CAROLINA PROFESSIONAL ENGINEER
 SEAL 043251
 DON A. PARKER



TEMPORARY TRAFFIC CONTROL PHASE I

DOCUMENT NOT CONSIDERED FINAL UNLESS ALL SIGNATURES COMPLETED

3/26/2024 11:5809\Traffic\TrafficControl\TCP\U-5809_TC_TMP_04.dgn User:jsmevin